

# SPARE PARTS MANUAL

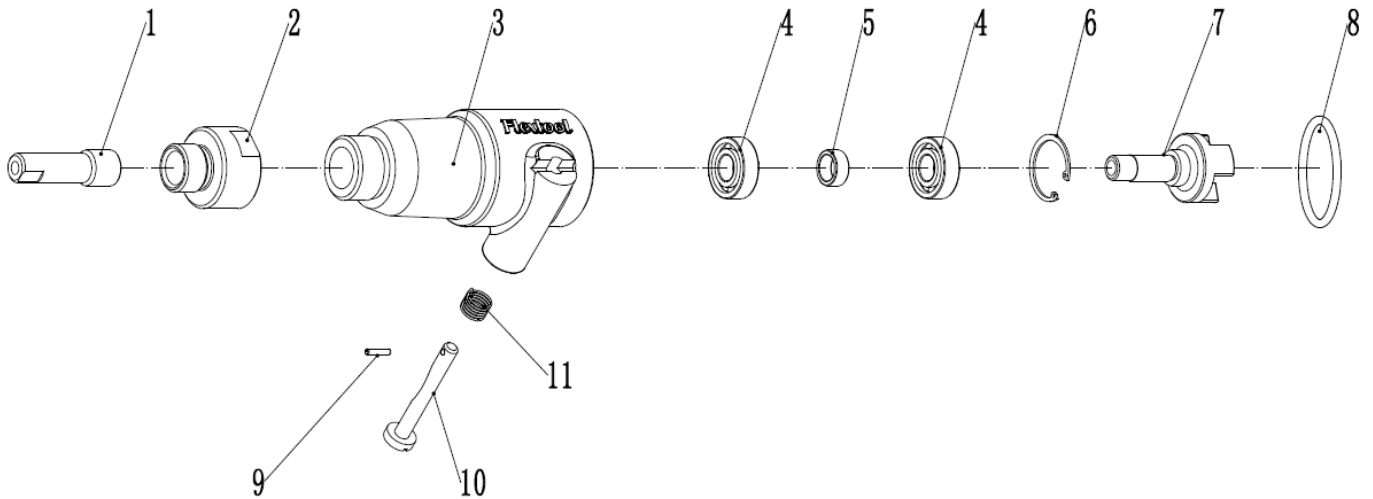
## FLEXTOOL FLEXSHAFT EXTENSION FES-2

(FOR USE WITH FLEXTOOL SUBMERSIBLE PUMPS  
AND FLEXSHAFT CONCRETE VIBRATORS)

Applies to serial numbers D07-10000 onwards



Version 3.0 (May 2023)

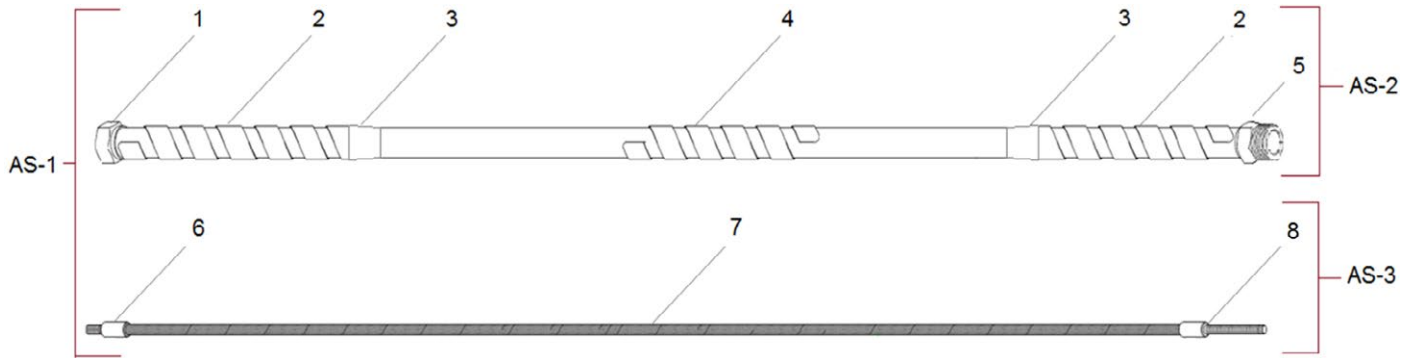


**Extension Coupling**

| Item No. | Product Code | Description                            | Qty | Remarks          |
|----------|--------------|--|-----|------------------|
| 1        | See Remarks  | FLX EXT SHAFT SPINDLE ADAPTOR (206110) | 1   | Use SK-1 or AS-1 |
| 2        | See Remarks  | FLX ADAPTOR HOUSING (206109)           | 1   | Use AS-1         |
| 3        | See Remarks  | FLX EXT COUPLING HOUSING (206901)      | 1   | Use AS-1         |
| 4        | See Remarks  | FLX BEARING (550102)                   | 2   | Use SK-1 or AS-1 |
| 5        | See Remarks  | FLX SPACER (046330)                    | 1   | Use SK-1 or AS-1 |
| 6        | See Remarks  | FLX CIRCLIP (670105)                   | 1   | Use SK-1 or AS-1 |
| 7        | See Remarks  | FLX SPINDLE 3-TEETH (360422)           | 1   | Use AS-1         |
| 8        | See Remarks  | FLX O-RING (510315)                    | 1   | Use SK-1 or AS-1 |
| 9        | See Remarks  | FLX ROLL PIN (673016)                  | 1   | Use SK-2 or AS-1 |
| 10       | See Remarks  | FLX EXT COUPLING TRIGGER (206902)      | 1   | Use SK-2 or AS-1 |
| 11       | See Remarks  | FLX SPRING TORSION (206903)            | 1   | Use SK-2 or AS-1 |

**Extension Coupling (Assembly / Service Kits)**

| Item No. | Product Code  | Description                                      | Qty | Remarks              |
|----------|---------------|--|-----|----------------------|
| AS-1     | NPS06342-UNIT | FLX COUPLING ASSY EXTENSION #2P SHAFT (F06342)   | 1   | Inc Items: 1 - 11    |
| SK-1     | NPS03046-UNIT | FLX SERVICE KIT EXTENSION COUPLING (206900SKA)   | 1   | Inc Items: 1, 4-6, 8 |
| SK-2     | NPS346SK-UNIT | FLX SERVICE KIT TRIGGER EXT COUPLING (206900SKB) | 1   | Inc Items: 9-11      |

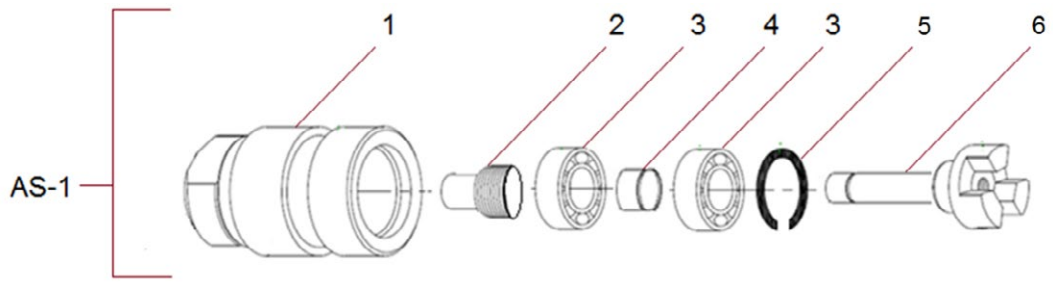


**Flexshaft**

| Item No. | Product Code | Description                             | Qty | Remarks          |
|----------|--------------|---|-----|------------------|
| 1        | See Remarks  | FLX FERRULE PUMP END 32MM (206103)      | 1   | Use AS-1 or AS-2 |
| 2        | See Remarks  | FLX END SUPPORT SPRING 32MM (206102)    | 2   | Use AS-1 or AS-2 |
| 3        | See Remarks  | FLX COLLAR 32MM (340303)                | 2   | Use AS-1 or AS-2 |
| 4        | See Remarks  | FLX MIDDLE SUPPORT SPRING 32MM (206111) | 1   | Use AS-1 or AS-2 |
| 5        | See Remarks  | FLX FERRULE COUPLING END 32MM (310315)  | 1   | Use AS-1 or AS-2 |
| 6        | See Remarks  | FLX CORE END SCREW 13MM (206101)        | 1   | Use AS-1 or AS-3 |
| 7        | See Remarks  | FLX INNER CORE 6M X 13MM (810124)       | 1   | Use AS-1 or AS-3 |
| 8        | See Remarks  | FLX CORE END HEX 13MM (049210)          | 1   | Use AS-1 or AS-3 |

**Flexshaft (Assembly / Service Kits)**

| Item No. | Product Code  | Description                             | Qty | Remarks                |
|----------|---------------|---|-----|------------------------|
| AS-1     | NPS01590-UNIT | FLX FLEXSHAFT ASSY 6M x 32MM (206946GZ) | 1   | Inc Items: AS-2 & AS-3 |
| AS-2     | NPS01586-UNIT | FLX CASING ASSY 6M x 32MM (206946G)     | 1   | Inc Items: 1 - 5       |
| AS-3     | NPS01595-UNIT | FLX INNER CORE ASSY 6M x 13MM (206946Z) | 1   | Inc Items: 6 - 8       |



**Coupling**

| Item No. | Product Code | Description                  | Qty | Remarks  |
|----------|--------------|------------------------------|-----|----------|
| 1        | See Remarks  | FLX BEARING HOUSING (360421) | 1   | Use AS-1 |
| 2        | See Remarks  | FLX HEX ADAPTOR (046310)     | 1   | Use SK-1 |
| 3        | See Remarks  | FLX BEARING (550102)         | 2   | Use SK-1 |
| 4        | See Remarks  | FLX SPACER (046330)          | 1   | Use SK-1 |
| 5        | See Remarks  | FLX CIRCLIP (670105)         | 1   | Use SK-1 |
| 6        | See Remarks  | FLX SPINDLE 3-TEETH (360422) | 1   | Use AS-1 |

**Coupling (Assembly / Service Kits)**

| Item No. | Product Code  | Description                | Qty | Remarks          |
|----------|---------------|----------------------------|-----|------------------|
| AS-1     | NPS01575-UNIT | FLX COUPLING ASSY (360420) | 1   | Inc Items: 1 - 6 |

|      |               |  |   |                  |
|------|---------------|--|---|------------------|
| SK-1 | NPS01576-UNIT | FLX SERVICE KIT COUPLING ASSY (360420SK) | 1 | Inc Items: 2 - 5 |
|------|---------------|--|---|------------------|



## **Parchem Construction Supplies Pty Ltd**

1956 Dandenong Road, Clayton VIC 3168, Australia

Phone: 1300 353 986

[flextool.com.au](http://flextool.com.au)

ABN 80 069 961 968

This manual summarises our best knowledge of the product based on the information available at the time of publication. You should read this manual carefully and consider the information in the context of how the product will be used. Our responsibility for products sold is subject to our standard terms and conditions of sale.

### **DISCLAIMER:**

Any advice, recommendation, information, assistance or service provided by us in this manual is given in good faith and is believed by us to be appropriate and reliable. However, any advice, recommendation, information, assistance or service provided by us is provided without liability or responsibility PROVIDED THAT the foregoing shall not exclude, limit, restrict or modify the right entitlements and remedies conferred upon any person or the liabilities imposed upon us by any condition or warranty implied by Commonwealth, State or Territory Act or ordinance void or prohibiting such exclusion limitation or modification. The product can be expected to perform as indicated in this manual so long as operation and operational procedures of the individual products are followed as recommended in this manual.

Design and technical specifications may be subject to changes.

© This publication is copyright. All rights are reserved. Flextool is a registered trade mark of Parchem Construction Supplies Pty Ltd.

**FOR MORE INFORMATION**

**CONTACT US ON 1300 353 986 OR VISIT [flextool.com.au](http://flextool.com.au)**