

PARTS LIST

HONDA ENGINE
GX160UT2-QCM
FOR MIKASA PRODUCTS

WITH PRODUCT NAME

PLATE COMPACTOR

MVC-88VTH

MVC-T90H

EN

805-11201

PARTS REMARK INDEX

How to read the marks and remarks used in this parts book.

Section 1 : Explanation of Code Use In “MRK” Column

OO : Interchangeable between the new part and the old one.

XX : Not Interchangeable between new and old.

OX : New part is usable for the old machine but the old part is not usable for the new machine.

XO : The old part is usable for the new machine but the new part is not usable for the old machine.

Note : In case of the lack of interchangeability between the new part and old part, a new part may be used by replacing all other parts found in the assembly. In this case, refer to section 2 for instruction on identifying other parts involved in a new assembly.

AD : Newly established(added)

DC : Suspended(discontinued)

NC : Part number changed

QC : Quantity used has been changed

NS : Not supplied individually but supplied in an assembly or a group.

AS : Special part designed to allow interchangeability between new and old part.

CR : Correction

Section 2 : Items Found In “Remark” Column

Serial Numbers - Where indicated, this indicates a serial number range (inclusive) where a particular part is used.

Model Number - Where indicated, this shows that the corresponding part is utilized only with this specific model number or model number variant.

or * : All parts with the same number following # or * belong to the same assembly. this part cannot be interchanged individually with any other assemblies to replace an old part (indicated by #), with a new part(indicated by *), then all other parts of that assembly must be replaced with new ones.

Note : If more than one of the same reference number is listed, the last one listed indicates newest(or latest)part available.

Section 3: Example

REF NO.	PART NO.	PART NAME	QTY	MRK	REMARKS
457(1)	5122-09230	Hinge Metal, Upper/24g	1		-1070 #3 (5)
457(2)	5072-09420	Hinge Metal, Upper M16	1	OX(3)	U1071-(6) * 3(7)

(1) Old part

(2) New part

(3) New part usable with old machine, but old part not usable with new machine (reference section 1).

(4) Old part number is used through this machine serial number.

(5) Old part, used in an assembly with other parts marked with #3. To use this part on a new machine, all other parts in this assembly must be replaced with old ones.

(6) New part put into use starting with this serial number and is still current.

(7) New part used in an assembly with other parts marked * 3, to use this part as a replacement for an old part, all other * 3 marked parts must be changed at the same time.

Section 4: Items Found In “MK2” Column

(only for suspended products)

! OO (“OO” is shown in figure) : The part shown in lower line is supplied.

! SD : Not available due to termination of production.

! NS : Not supplied individually, but supplied in an assembly or a group.

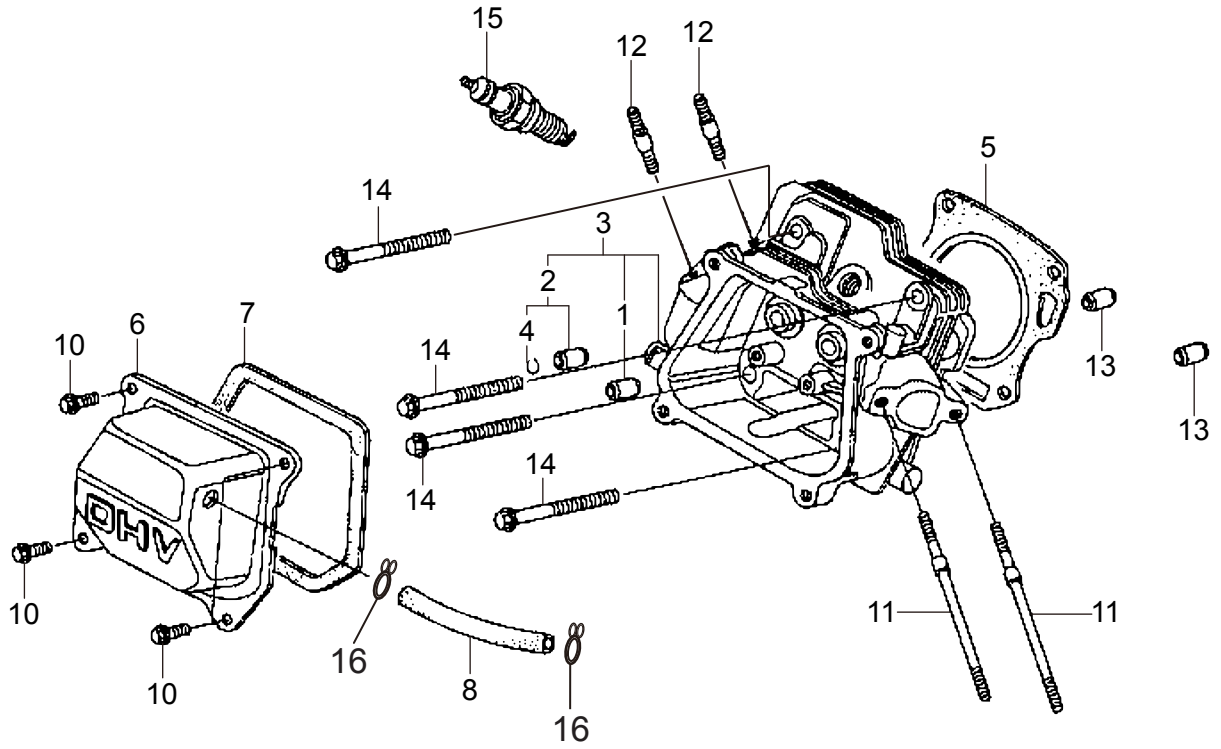
! PD : Supplied as unit product.

SS : Not available after stock run out.

(The contents of this parts catalog are subject to change without notice.)

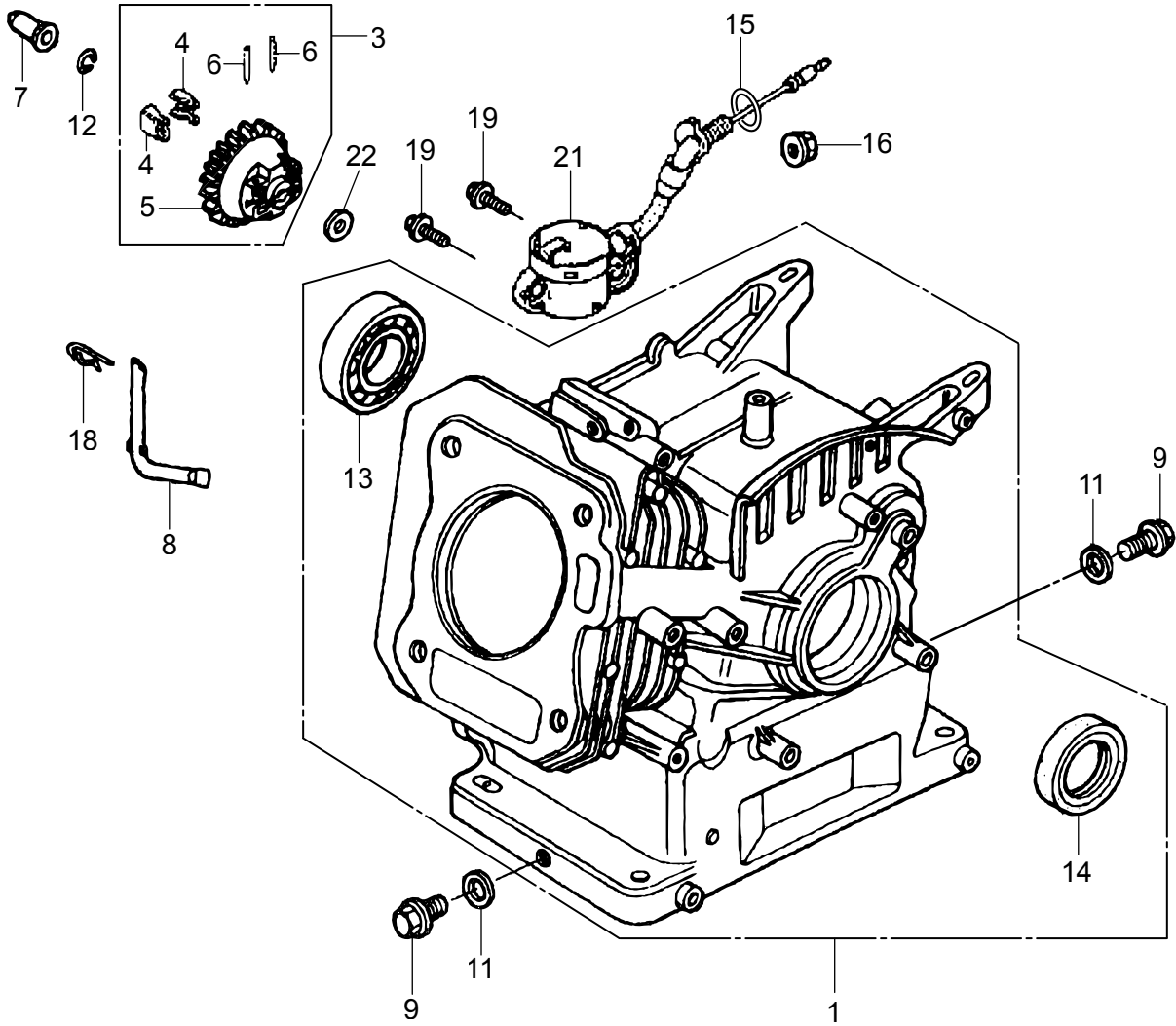
GX160UT2-QCM
CYLINDER HEAD

CHM0



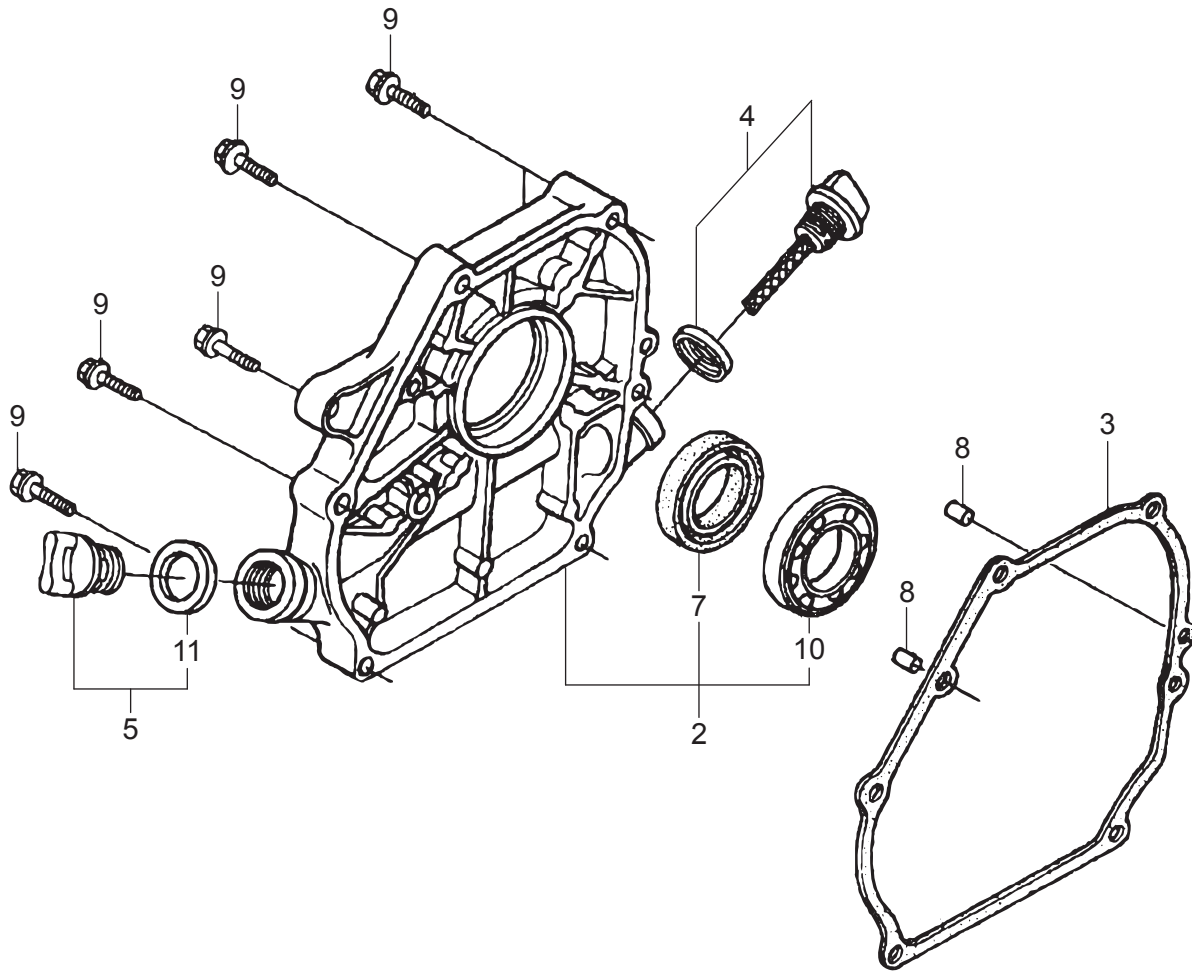
GX160UT2-QCM
CYLINDER BARREL

CHN0



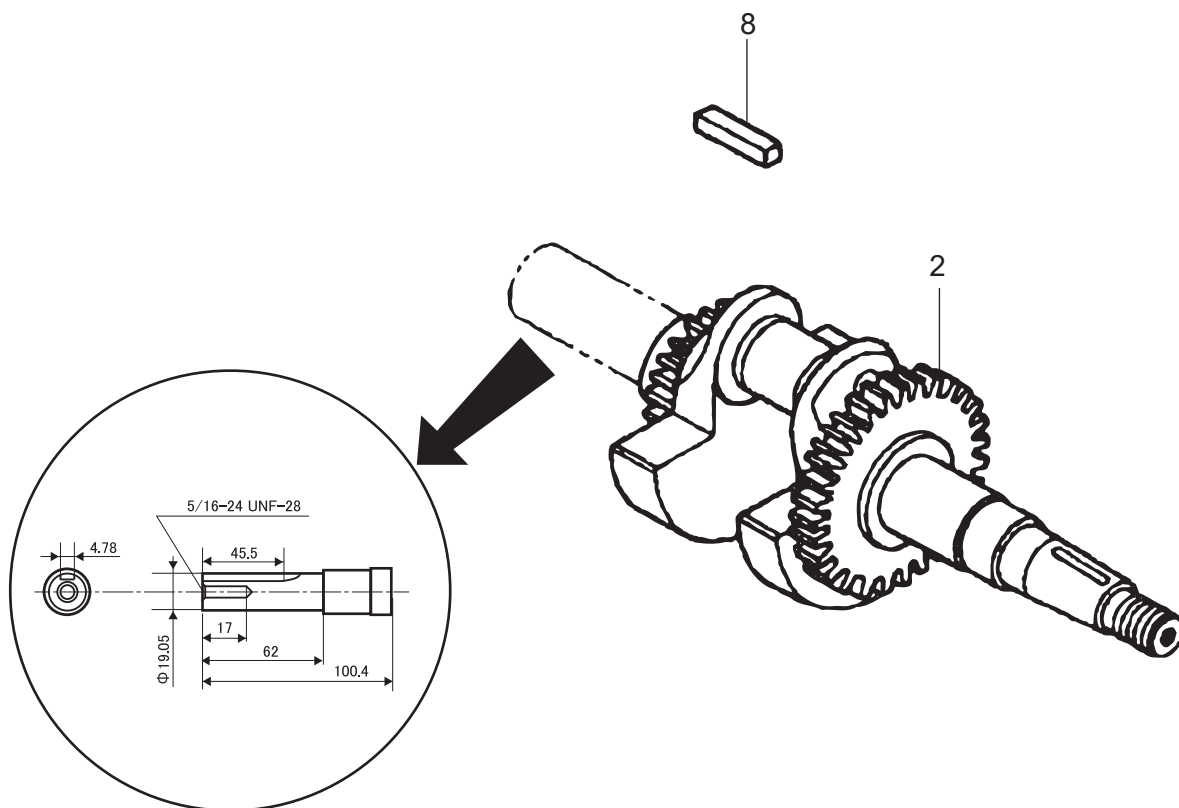
GX160UT2-QCM
CRANKCASE COVER

CHO0



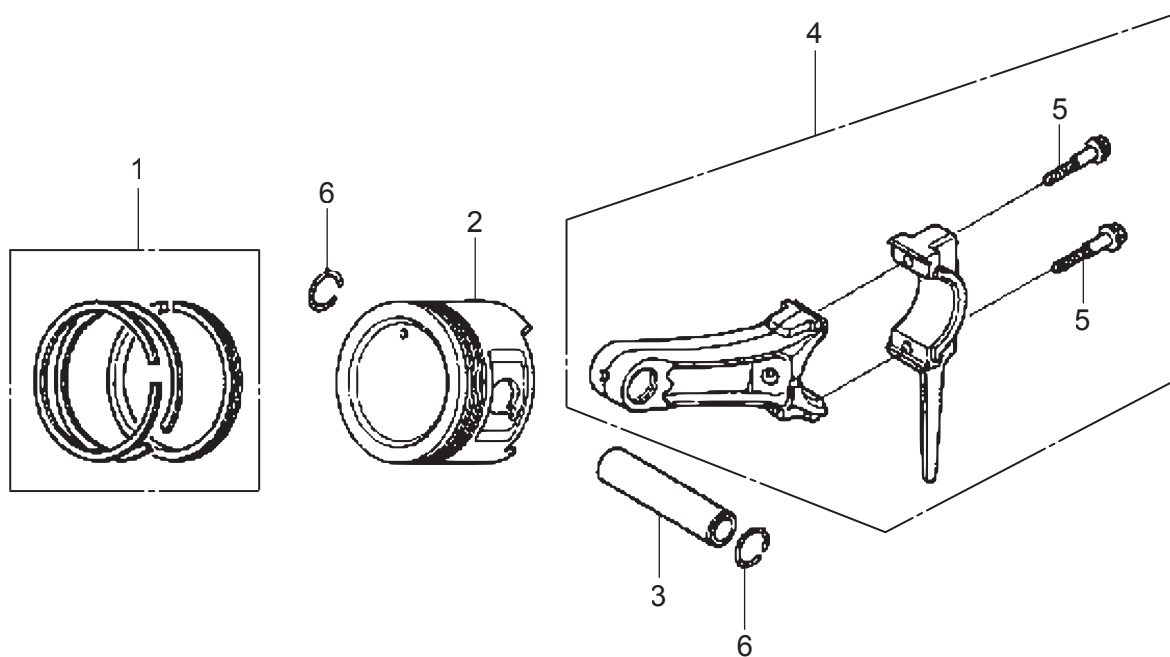
GX160UT2-QCM
CRANKSHAFT

CHP0



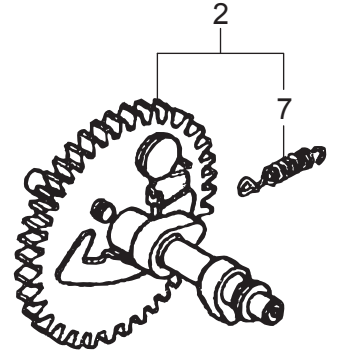
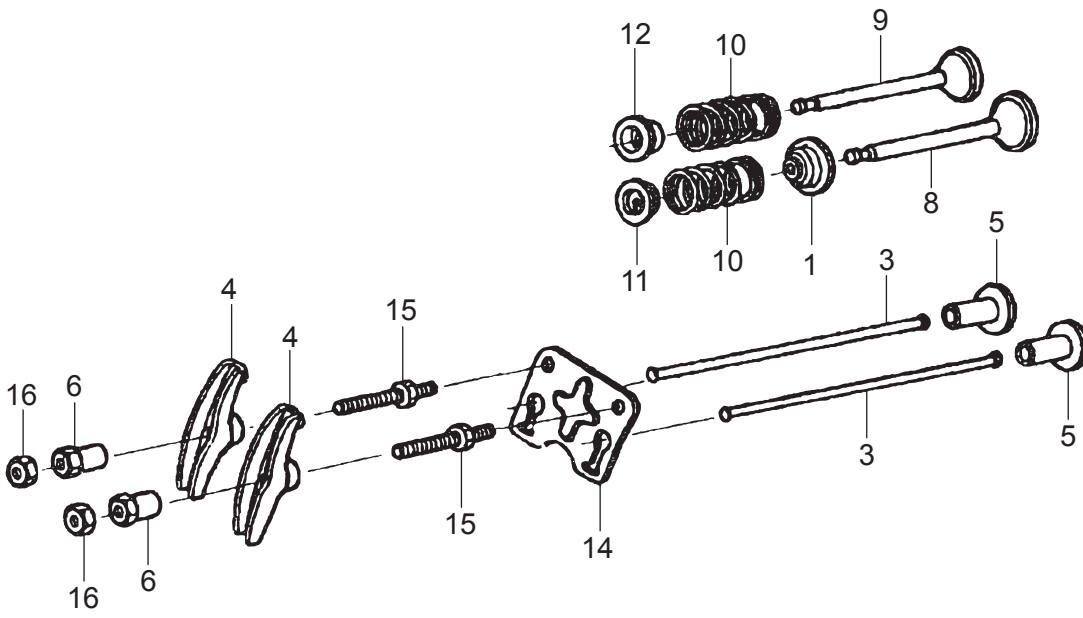
GX160UT2-QCM
PISTON

CHQ0



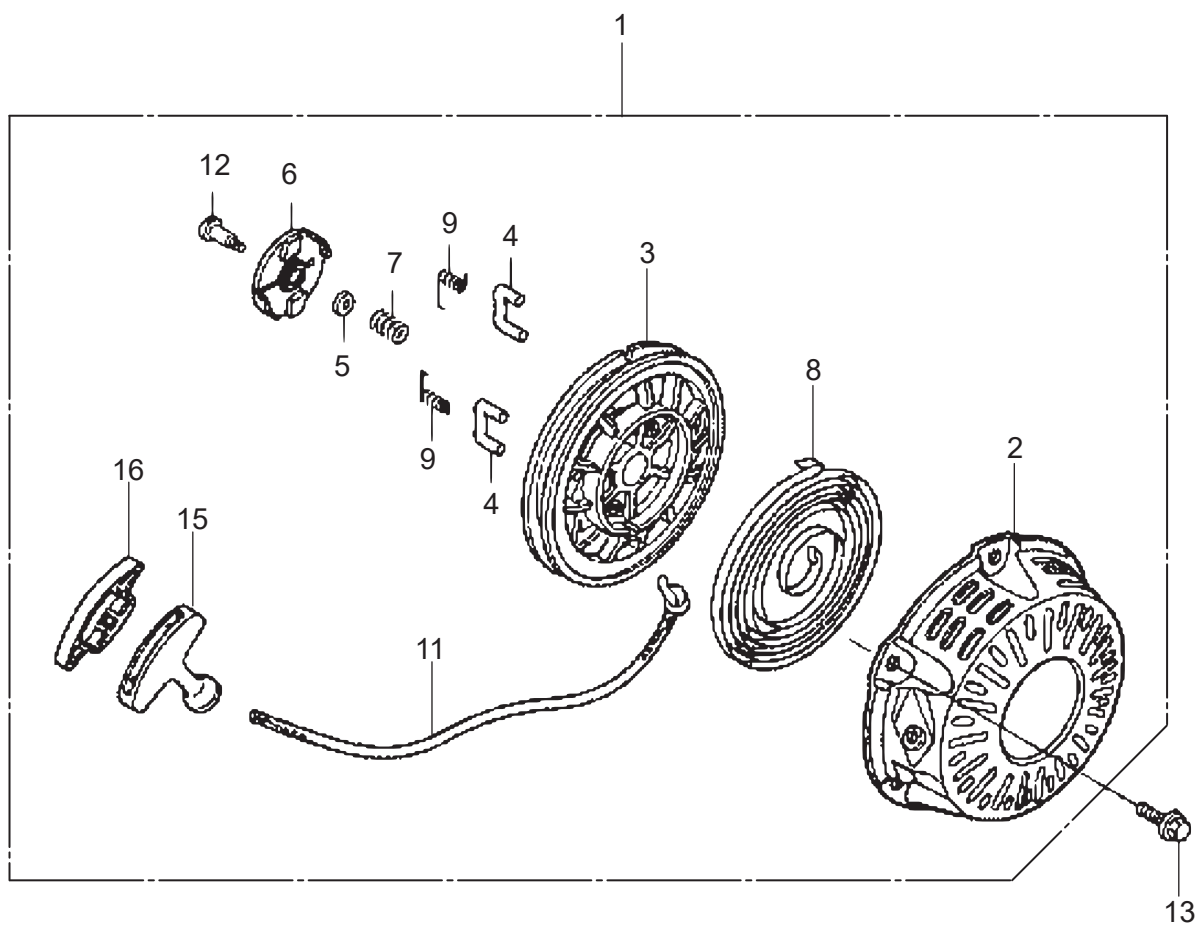
GX160UT2-QCM
CAMSHAFT

CHR0



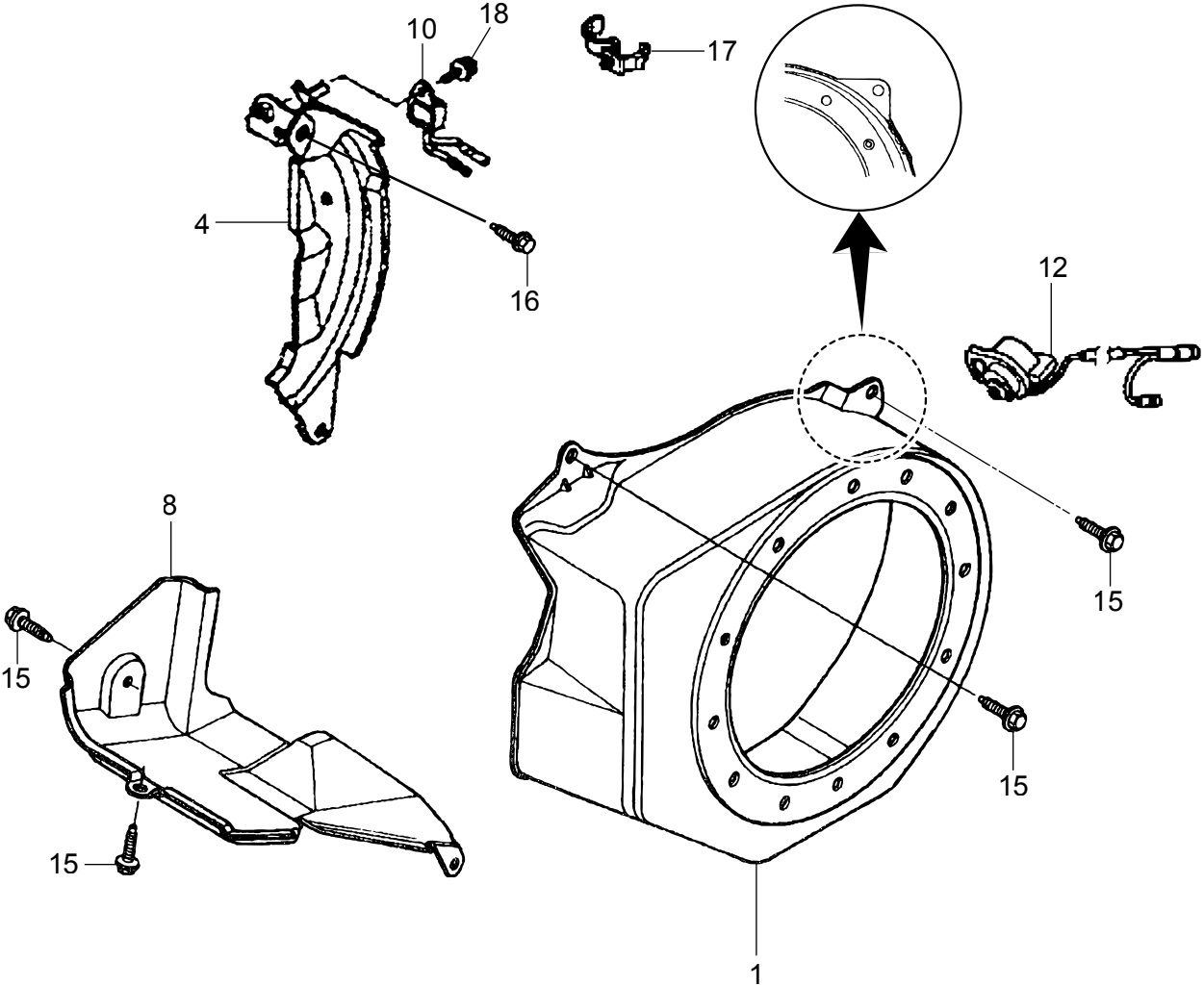
GX160UT2-QCM
RECOIL STARTER

CHS0



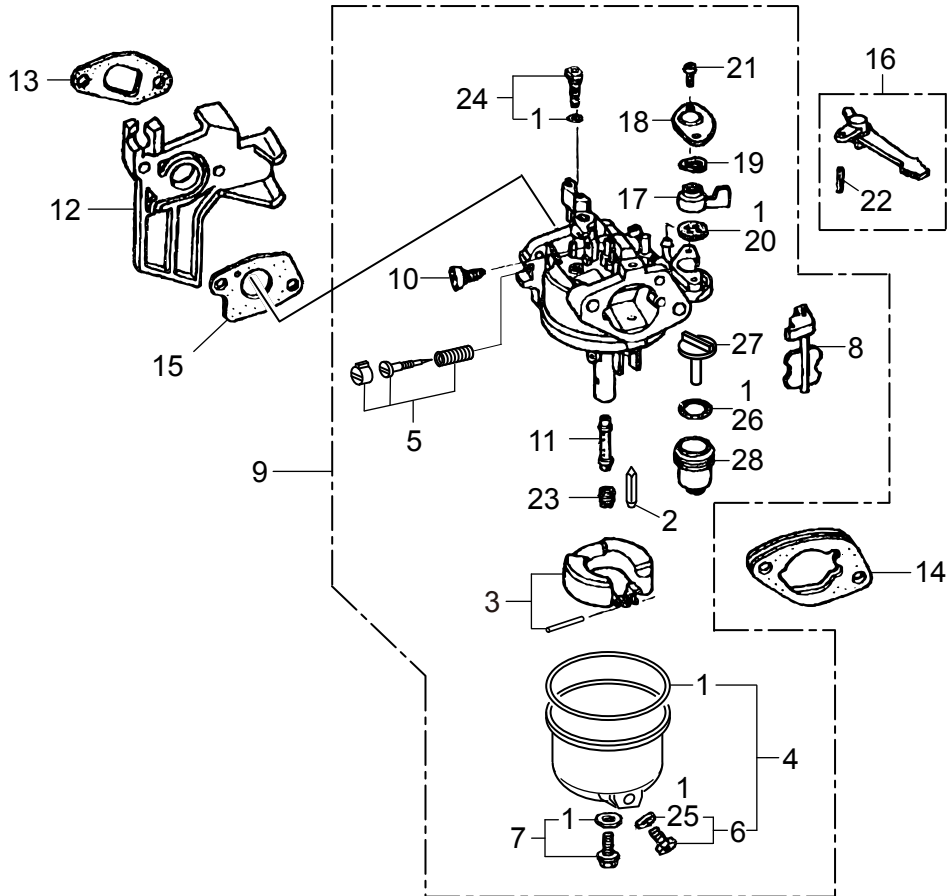
GX160UT2-QCM
FAN COVER

CHT0



GX160UT2-QCM
CARBURETOR

CHU0



GX160UT2-QCM
CARBURETOR

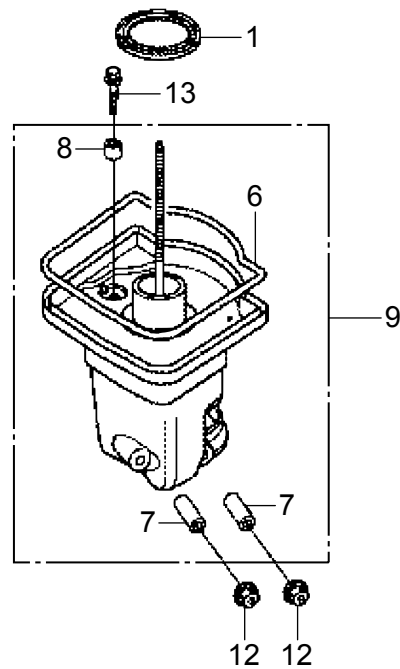
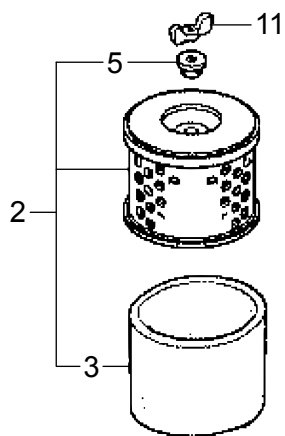
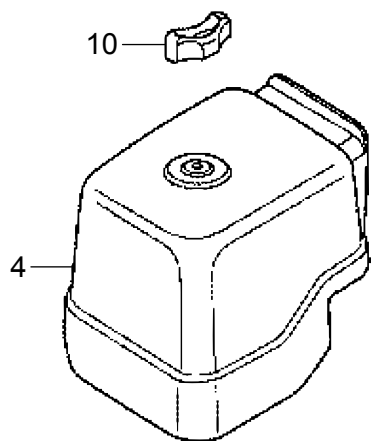
2017/8/8

**** CHU ****

REF NO.	PART NO.	PART NAME	Q' TY	MRK	MK2	REMARKS
1	16010-ZE1-812	GASKET SET	1			
2	16011-ZE0-005	FLOAT VALVE SET	1			
3	16013-Z0S-B01	FLOAT SET/GX200T2	1			
4	16015-Z4M-911	CHAMBER SET, FLOAT	1			
5	16016-ZH7-W01	SCREW SET, PILOT	1			
6	16024-Z5T-901	SCREW SET, DRAIN/GX200T2	1			
7	16028-Z5T-901	SCREW SET/GX200T2	1			
8	16044-Z4M-911	CHOKE SET/GX200T2	1			
9	16100-Z4M-781	CARBURETOR AY/160UT2SCM	1			
10	16124-ZE0-005	SCREW, THROTTLE STOP	1			
11	16166-Z4M-781	NOZZLE, MAIN	1			
12	16211-Z4M-000	INSULATOR, CARBURETOR/GX	1			
13	16212-ZH8-800	PACKING, INSULATOR	1			
14	16220-ZE1-020	SPACER COMP. , CARBURETOR	1			
15	16221-ZH8-801	PACKING, CARBURETOR	1			
16	16610-ZE1-000	CHOKE LEVER COMP.	1			
17	16953-ZE1-812	LEVER, COCK	1			
18	16954-ZE1-812	PLATE, LEVER SETTING	1			
19	16956-ZE1-811	SPRING, COCK LEVER	1			
20	16957-ZE1-812	PACKING, FUEL COCK	1			
21	93500-030060H	SCREW 3X6 / GX390	2			
22	94305-20122	SPRING PIN 2X12	1			
23	99101-ZH80720	MAIN JET #72	1			
24	99204-ZE20400	JET SET, PILOT, #40	1			
25	16141-Z0S-003	WASHER, PLAIN(6. 2)/DRAIN	1			
26	16173-001-004	PACKING, CUP	1			
27	16959-Z5T-901	FILTER, CUP/GX200T2	1			
28	16967-ZE0-811	CUP, FUEL STRAINER	1			

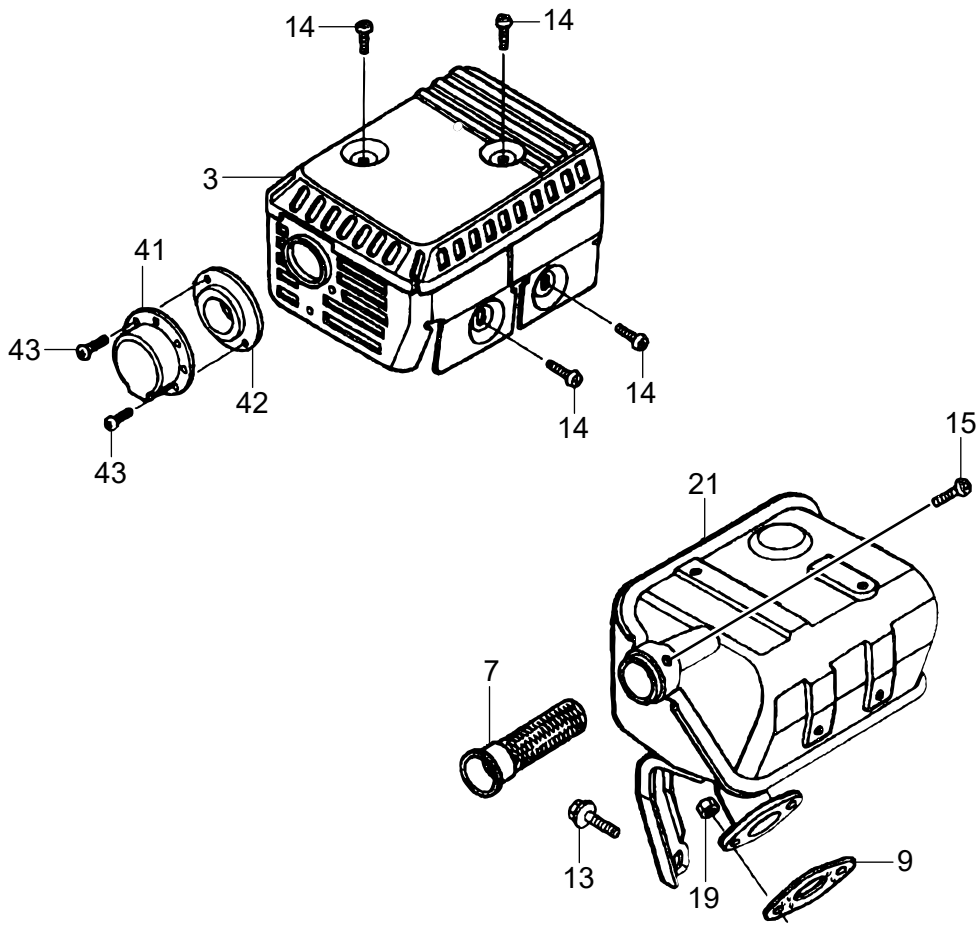
GX160UT2-QCM
AIR CLEANER

CHV0



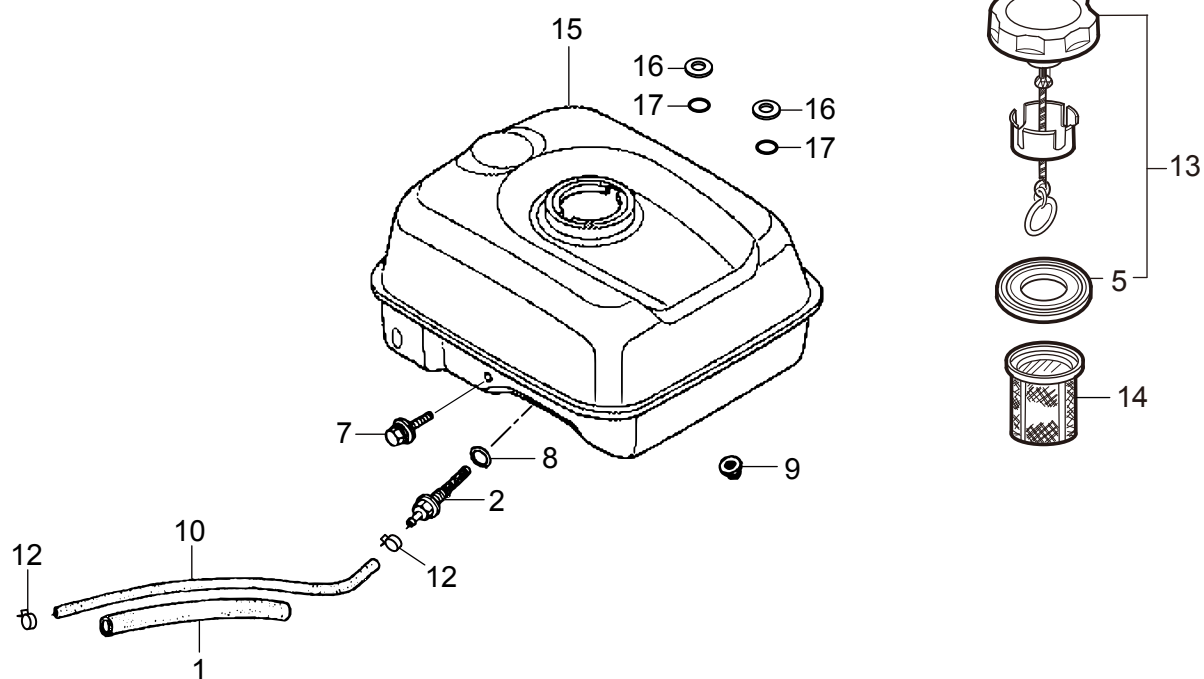
GX160UT2-QCM
MUFFLER

CHW0



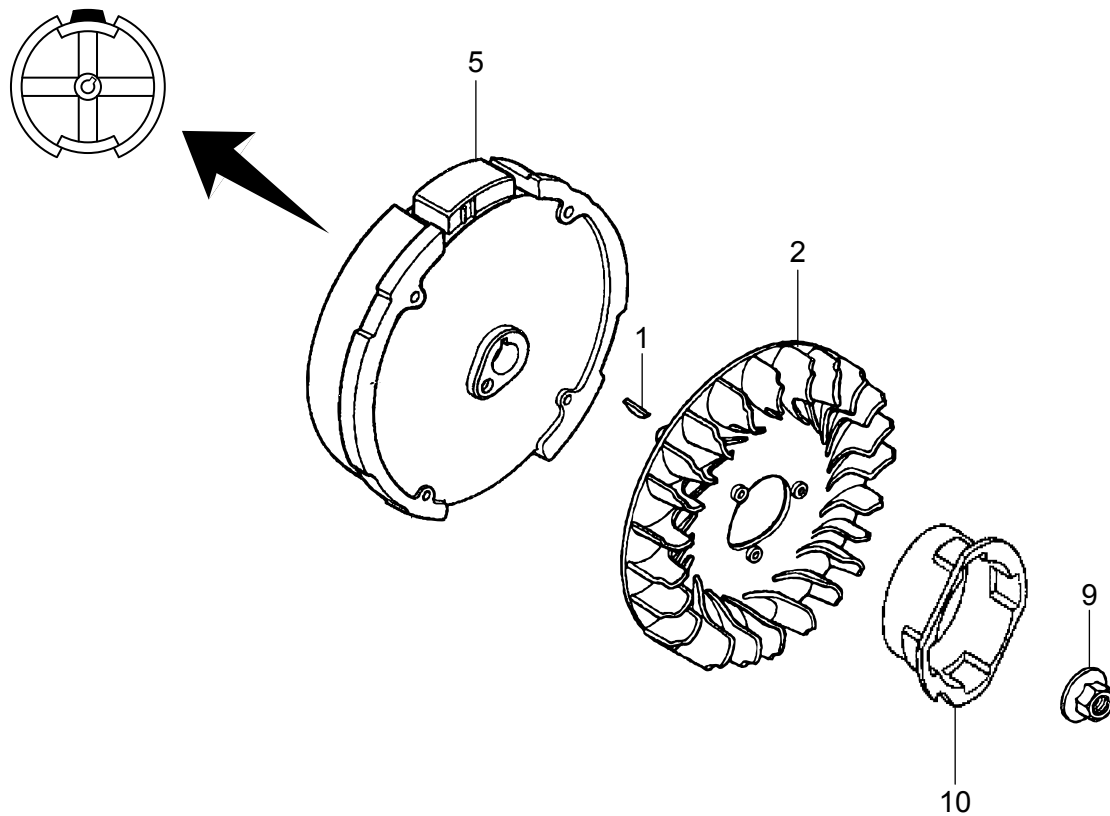
GX160UT2-QCM FUEL TANK

CHX0



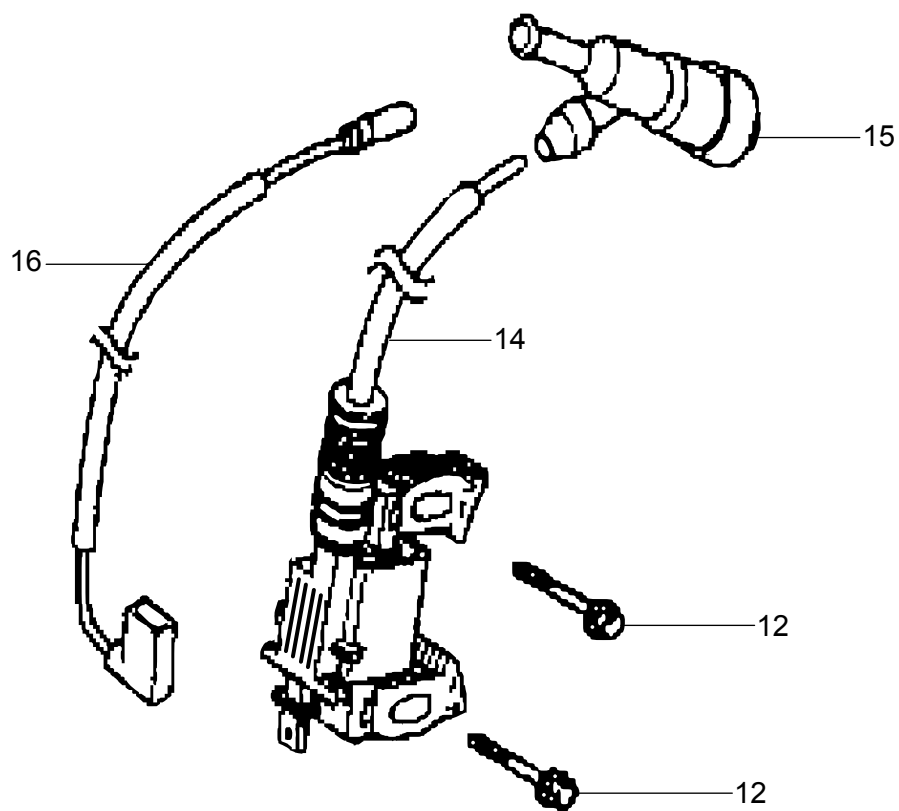
GX160UT2-QCM
FLYWHEEL

CHY0



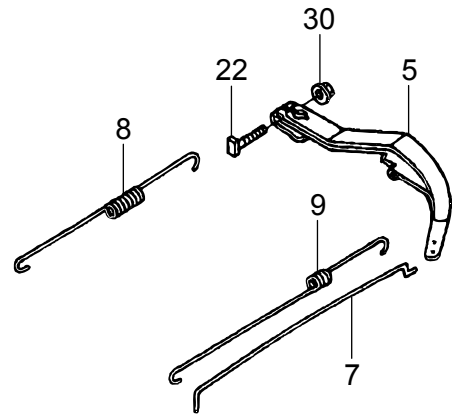
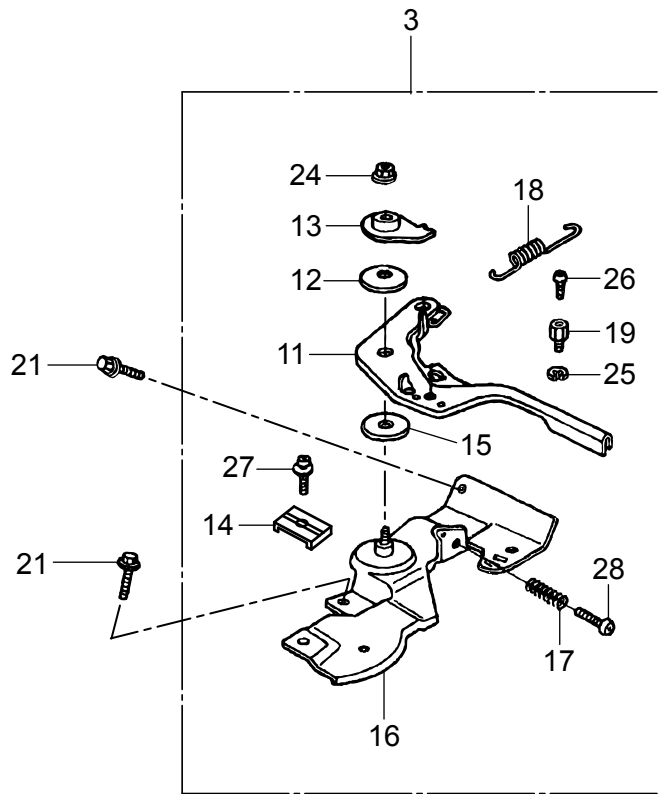
GX160UT2-QCM
IGNITION COIL

CHZ0



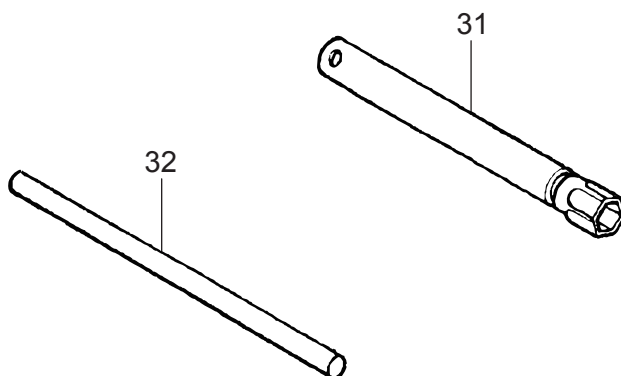
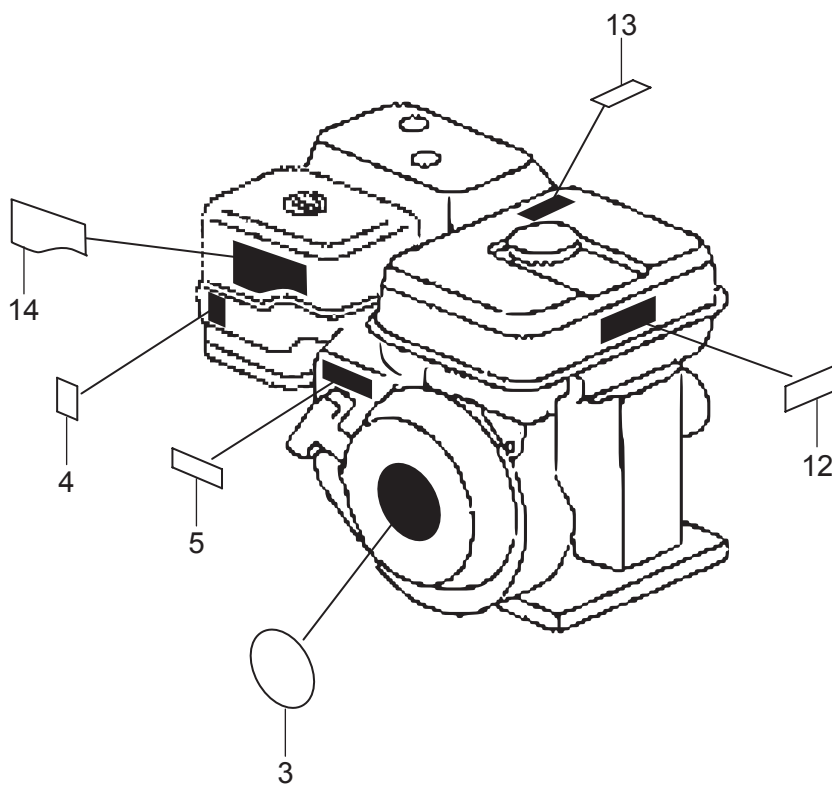
GX160UT2-QCM
CONTROL

CIA0



GX160UT2-QCM LABEL & TOOL

CIB0



Mikasa