



SPARE PARTS MANUAL

FLEXTOOL TUFFTRUK™ EB300



Version 1.0 (July 2024)

FOR MORE INFORMATION VISIT flextool.com.au

Flextool TuffTruk EB300 Mini Dumper

Explanation Of Code In Remarks Column.....	4
Suggested Spare Parts	5

Component Drawings

Nameplate And Decals Assembly	6-7
Handlebar And Wheel Assembly	8-9
Front Assembly	10-11
Rear Assembly.....	12-13
Control Panel.....	14-15
Poly Tub And Carrier	16-17
Transaxle	18-19
Power/Gnd Cable Assembly	20-21

NOTICE

Specifications are subject to change without notice.

EXPLANATION OF CODE IN REMARKS COLUMN

The following section explains the different symbols and remarks used in the Parts section of this manual. Use the help numbers found on the back page of the manual if there are any questions.

NOTICE

The contents and part numbers listed in the parts section are subject to change **without notice**. Flextool does not guarantee the availability of the parts listed.

SAMPLE PARTS LIST

NO.	PART NO.	PART NAME	QTY.	REMARKS
1	12345	BOLT	1...	INCLUDES ITEMS W/%
2%		WASHER, 1/4 IN.		NOT SOLD SEPARATELY
2%	12347	WASHER, 3/8 IN. ..1 ...		45T ONLY
3	12348	HOSE	A/R.	MAKE LOCALLY
4	12349	BEARING	1 ...	S/N 2345B AND ABOVE

NO. Column

Unique Symbols — All items with same unique symbol (@, #, +, %, or >) in the number column belong to the same assembly or kit, which is indicated by a note in the “Remarks” column.

Duplicate Item Numbers — Duplicate numbers indicate multiple part numbers, which are in effect for the same general item, such as different size saw blade guards in use or a part that has been updated on newer versions of the same machine.

NOTICE

When ordering a part that has more than one item number listed, check the remarks column for help in determining the proper part to order.

PART NO. Column

Numbers Used — Part numbers can be indicated by a number, a blank entry, or TBD.

TBD (To Be Determined) is generally used to show a part that has not been assigned a formal part number at the time of publication.

A blank entry generally indicates that the item is not sold separately or is not sold by Flextool. Other entries will be clarified in the “Remarks” Column.

QTY. Column

Numbers Used — Item quantity can be indicated by a number, a blank entry, or A/R.

A/R (As Required) is generally used for hoses or other parts that are sold in bulk and cut to length.

A blank entry generally indicates that the item is not sold separately. Other entries will be clarified in the “Remarks” Column.

REMARKS Column

Some of the most common notes found in the “Remarks” Column are listed below. Other additional notes needed to describe the item can also be shown.

Assembly/Kit — All items on the parts list with the same unique symbol will be included when this item is purchased.

Indicated by:

“INCLUDES ITEMS W/(unique symbol)”

Serial Number Break — Used to list an effective serial number range where a particular part is used.

Indicated by:

“S/N XXXXX AND BELOW”

“S/N XXXX AND ABOVE”

“S/N XXXX TO S/N XXX”

Specific Model Number Use — Indicates that the part is used only with the specific model number or model number variant listed. It can also be used to show a part is NOT used on a specific model or model number variant.

Indicated by:

“XXXXX ONLY”

“NOT USED ON XXXX”

“Make/Obtain Locally” — Indicates that the part can be purchased at any hardware shop or made of available items. Examples include battery cables, shims, and certain washers and nuts.

“Not Sold Separately” — Indicates that an item cannot be purchased as a separate item and is either part of an assembly/kit that can be purchased or is not available for sale through Flextool.

NAMEPLATE AND DECALS ASSY.

FLEXTOOL TUFFTRUK EB300 MINI DUMPER

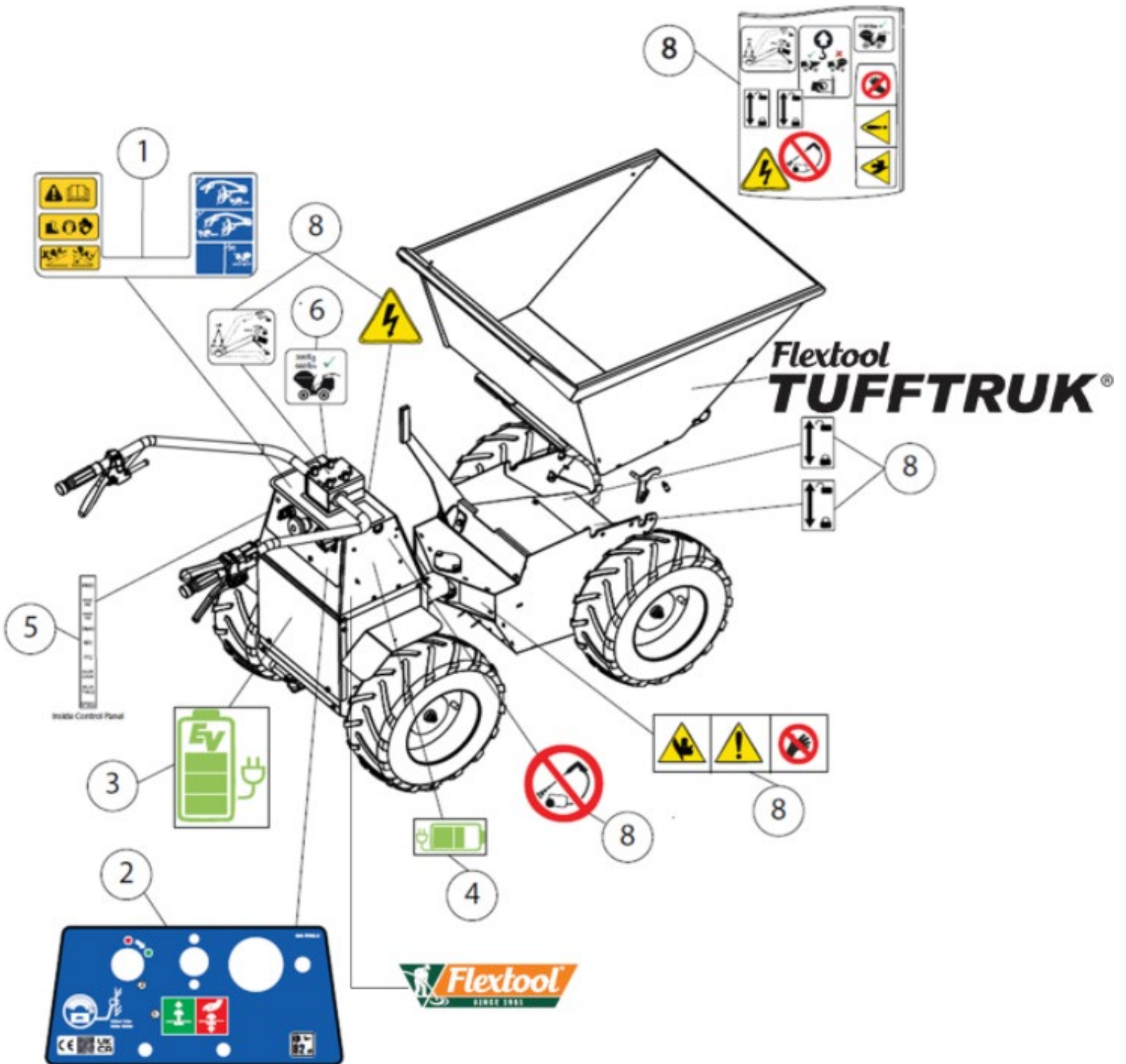
1 to 3 units

Qty.	P/N	Description
3	70-0188	FUSE, 10A IGNITION, RED
3	70-0189	FUSE, 20A PTO. YELLOW
3	70-0183	FUSE, 100A CONTROLLER
3	70-0140SP2	5K OHM POT.
3	70-0128	SOLENOID, 24 VDC
1	70-0127	EMERG. STOP SWITCH
1	70-0134	BATTERY CHARGER
1	60-6515LHF	WHEEL EB300 FLOAT 16X6.5X8 LHS
1	60-6515RHF	WHEEL EB300 FLOAT 16X6.5X8 RHS
2	70-8003	IGNITION SW W/KEYS
2	75-02700	LEVER/CABLE ASSY., DM
2	75-02100	LEVER ASSY., REV.
2	75-03000	FORWARD LEVER
4	74-1022	GRIP, HANDLEBAR
2	2-1400-0	STEERING DAMPNER
2	105-09800	STEERING ROD ASSY.

NOTICE

Part numbers on this Suggested Spare Parts list may supersede/replace the part numbers shown in the following parts lists.

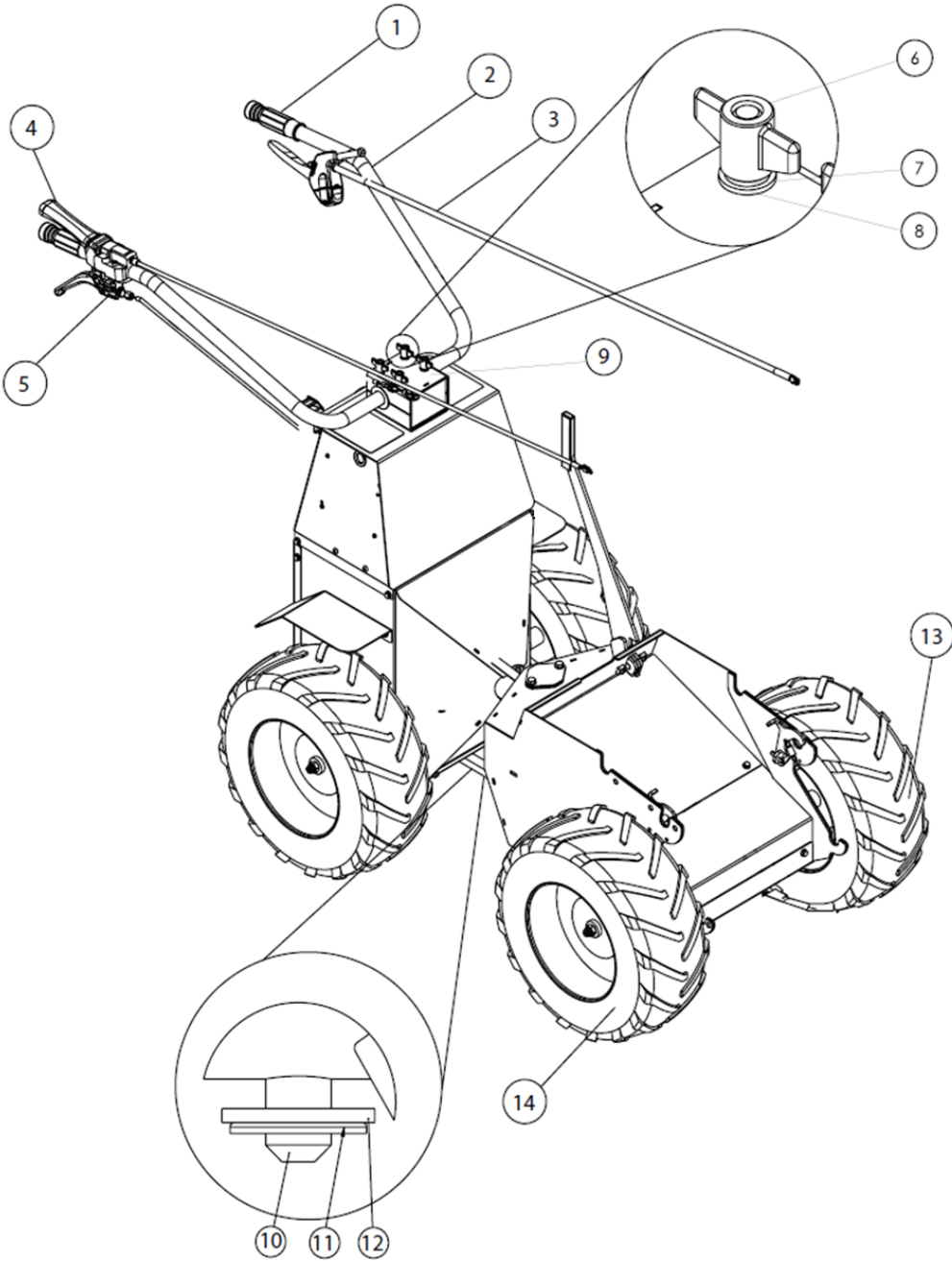
NAMEPLATE AND DECALS ASSY.



NAMEPLATE AND DECALS ASSY.

<u>NO.</u>	<u>PART NO.</u>	<u>PART NAME</u>	<u>QTY.</u>	<u>REMARKS</u>
1	800-17509	DECAL: OPERATION INSTRUCTION	1	
2	800-17508	DECAL: EMERG.STOP/BATTERY CHARGE	1	
3	800-15070	DECAL: EV LOGO	1	
4	800-15073	DECAL: EV SIDE DECAL	1	
5	800-17506	DECAL: JUNCTION BOX PORTS	1	
6	800-17507	DECAL: LOAD CAPACITY 660 LB. (300KG)	1	
8	800-11502	DECAL: WARNING	1	

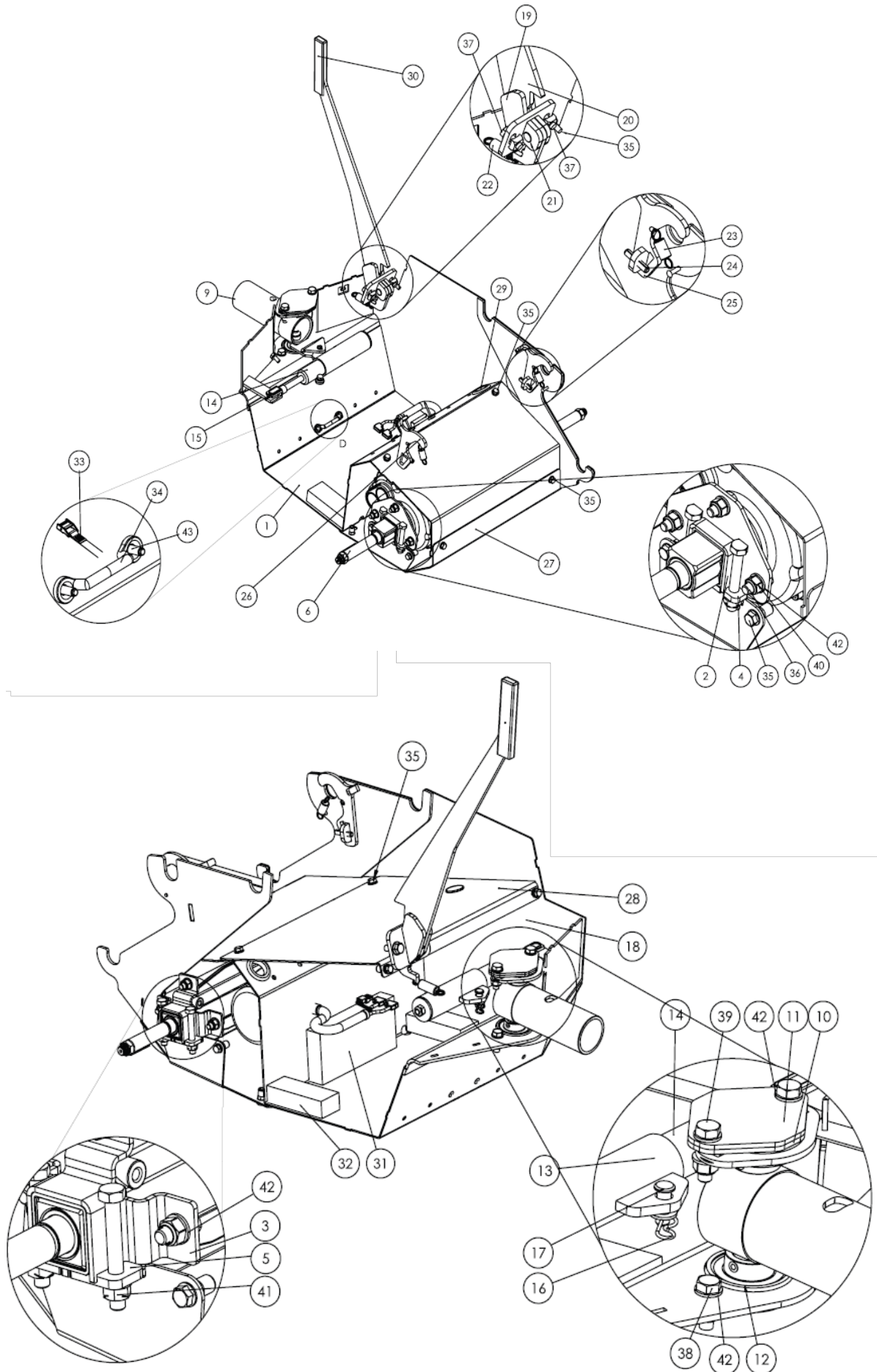
HANDLEBAR ASSY & WHEEL



HANDLEBAR ASSY & WHEEL

<u>NO.</u>	<u>PART NO.</u>	<u>PART NAME</u>	<u>QTY.</u>	<u>REMARKS</u>
1	74-1022	HANDLE, GRIP	2	
2	105-10400	HANDLEBAR	1	
3	75-02100	LEVER ASSY., REVERSE	1	
4	75-02700	LEVER/CABLE ASSY., DEADMAN	1	
5	75-03000	LEVER/CABLE ASSY., FORWARD	1	
6	8-8118	WING NUT	4	
7	4-8003	WASHER, M8 SPRING	4	
8	4-8006	WASHER, M8	4	
9	105-99974	STEERING CLAMP UPPER	1	TO EB221360
9	105-10600	STEERING CLAMP UPPER	1	FROM EB221361
10	108-01200	STEERING CLAMP UPPER	1	
11	4-1216	STARLOCK WASHER M12	1	
12	4-1201	WASHER M12	1	
13	60-6515LHF	WHEEL EB300 FLOAT 16X6.5X8 LHS	2	
14	60-6515RHF	WHEEL EB300 FLOAT 16X6.5X8 RHS	2	

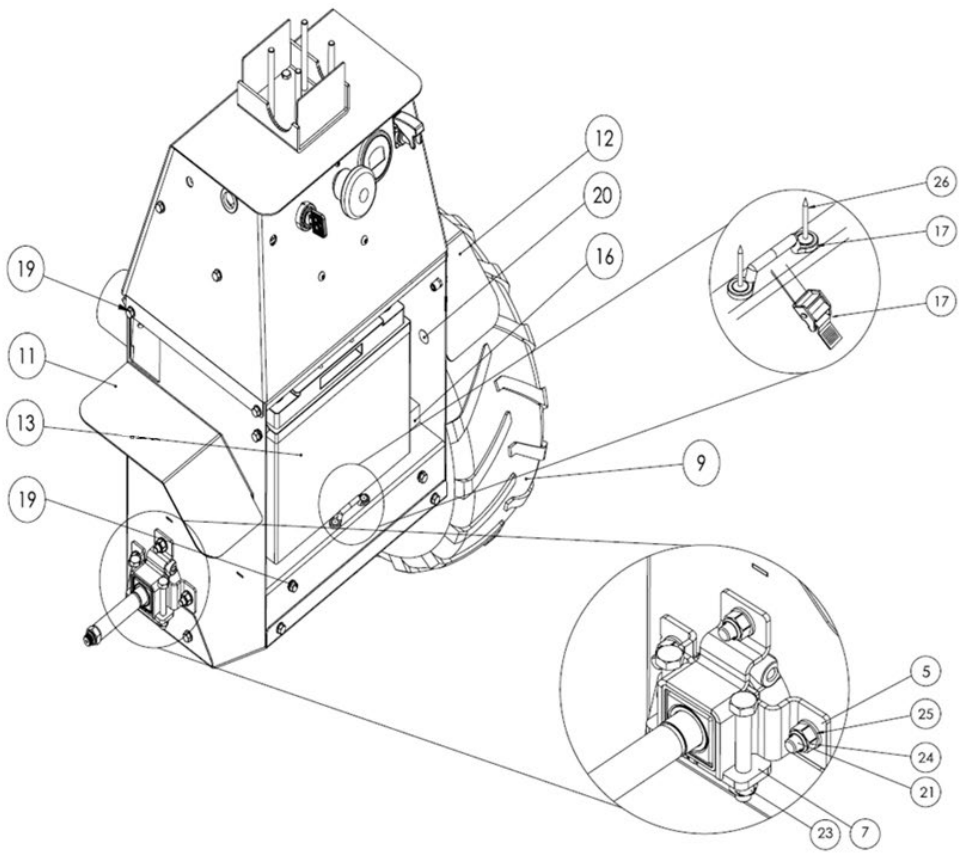
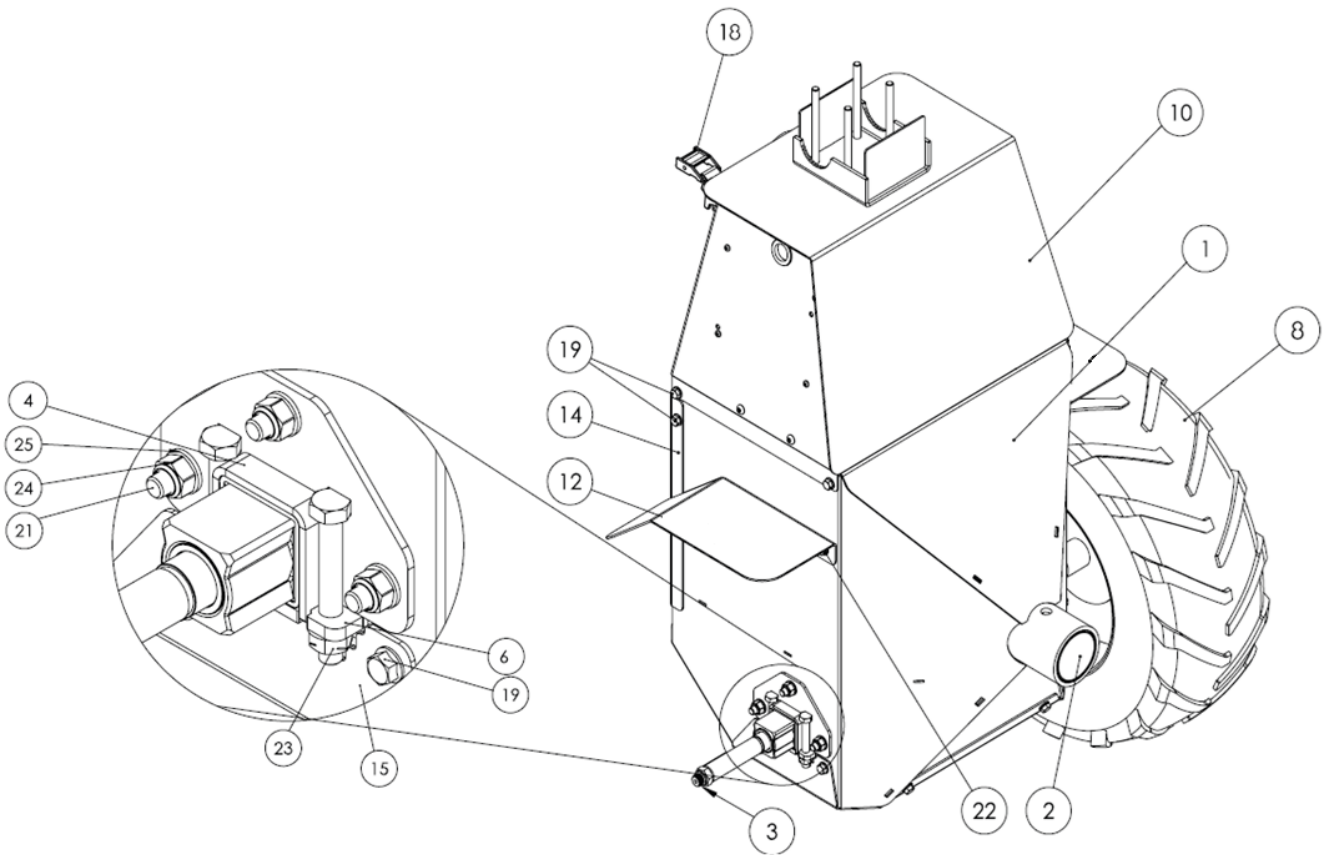
FRONT ASSY.



FRONT ASSY.

<u>NO.</u>	<u>PART NO.</u>	<u>PART NAME</u>	<u>QTY.</u>	<u>REMARKS</u>
1	108-01400	EB300 FRONT WA CW RIVNUTS	1	
2	108-01800	AXLE RETAINER EB300 RIGHT CT WA	1	
3	108-01900	AXLE RETAINER EB300 LEFT CT WA	1	
4	108-99924	PLATE AXLE CLAMP CT RH	1	
5	108-99925	PLATE AXLE CLAMP CT LH	1	
6	70-8001	TRANSAXLE (EB300)	1	
7	60-6515RHF	WHEEL EB300 FLOAT 16 X 6.5 X 8 RIGHT	1	
8	60-6515LHF	WHEEL EB300 FLOAT 16 X 6.5 X 8 LEFT	1	
9	108-00300	EB300 GIMBLE WA	1	
10	101-99943	SPACER BEARING COVER	1	
11	101-99942	PLATE BEARING COVER	1	
12	53-0180	BEARING	2	
13	108-02500	DAMPER HOLDER ASSY	1	
14	2-1500	DAMPER	1	
15	3-6031	CLEVIS	1	
16	P1243.022-S-ZP	R CLIP Ø1.8	1	
17	9-30015	CLEVIS PIN	1	
18	70-3200	Battery 12v 75Ah AGM	1	
19	108-00200	SKIP RELEASE BRKT	1	
20	108-99903	SKIP CATCH 300	1	
21	3-0091	PIN LATCH PIVOT	1	
22	2-1010	SPRING EXT	1	
23	2-1020	SPRING - SKIP RETAINING	2	
24	3-0102	SPRING PIN Ø6x30LG	2	
25	105-99965	EB500 LH SKIP RETAINER	1	
26	105-99956	EB500 RH SKIP RETAINER	1	
27	108-99905	BELLY PAN FRONT EB300	1	
28	108-01600	EB300 TOP COVER	1	
29	72-2200	GROMMET 20MM	1	
30	72-0200	MOULDING TIP HANDLE	1	
31	1-1895	EB300 BATTERY PACKER WIDTH	1	
32	1-1896	EB300 BATTERY PACKER SIDE	2	
33	74-1056	STRAP CAM BUCKLE	1	
34	74-1055	STAPLE-BOLT/RIVET ON	2	
35	7-6064	SCREW M6 X 12	12	
36	7-8011	BOLT M8 X 20	6	
37	7-8080	SERRATED BOLT M8 X 20	2	
38	9-8012	BOLT M8 X 25	2	
39	7-8009	BOLT M8 X 30	2	

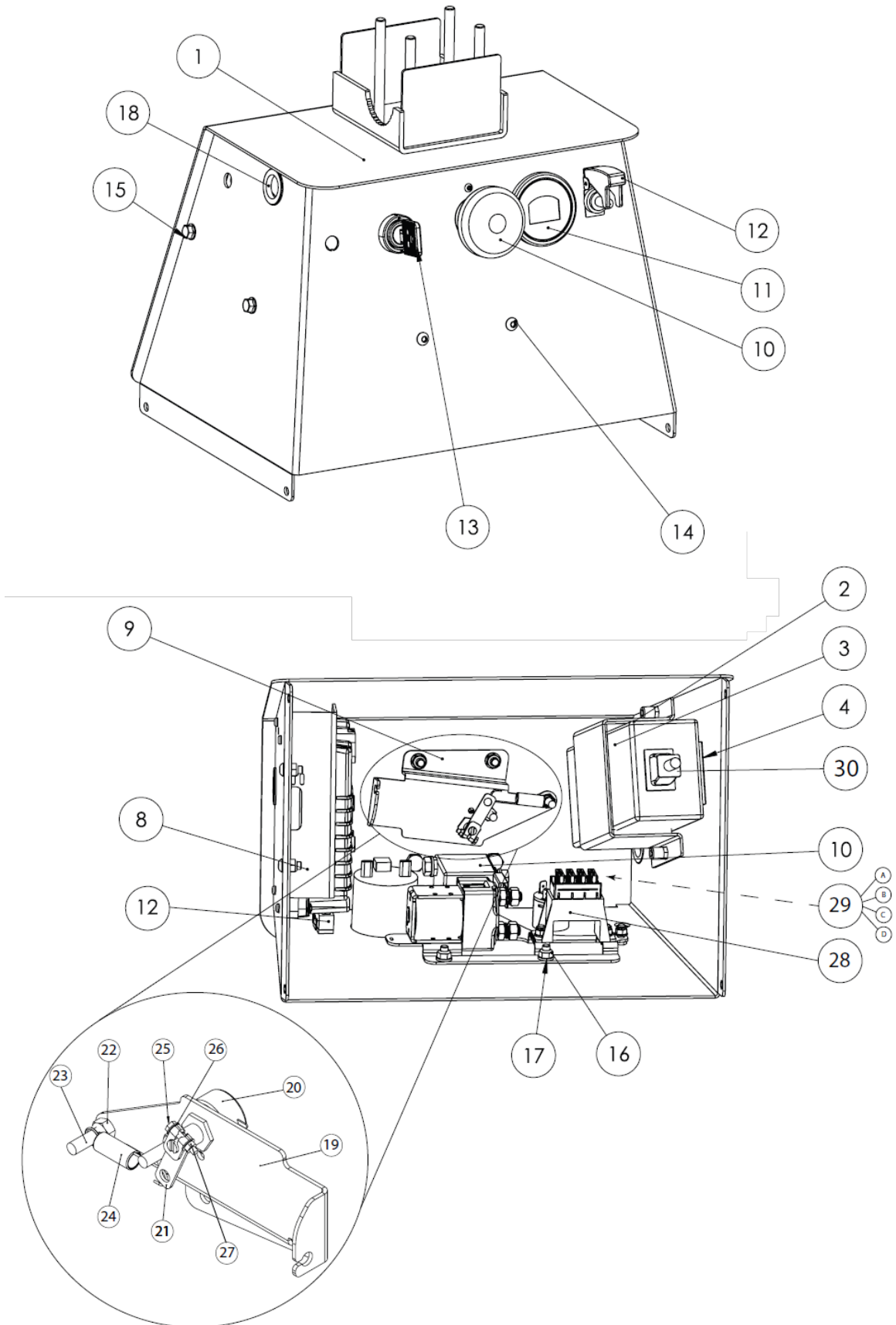
REAR ASSY.



REAR ASSY.

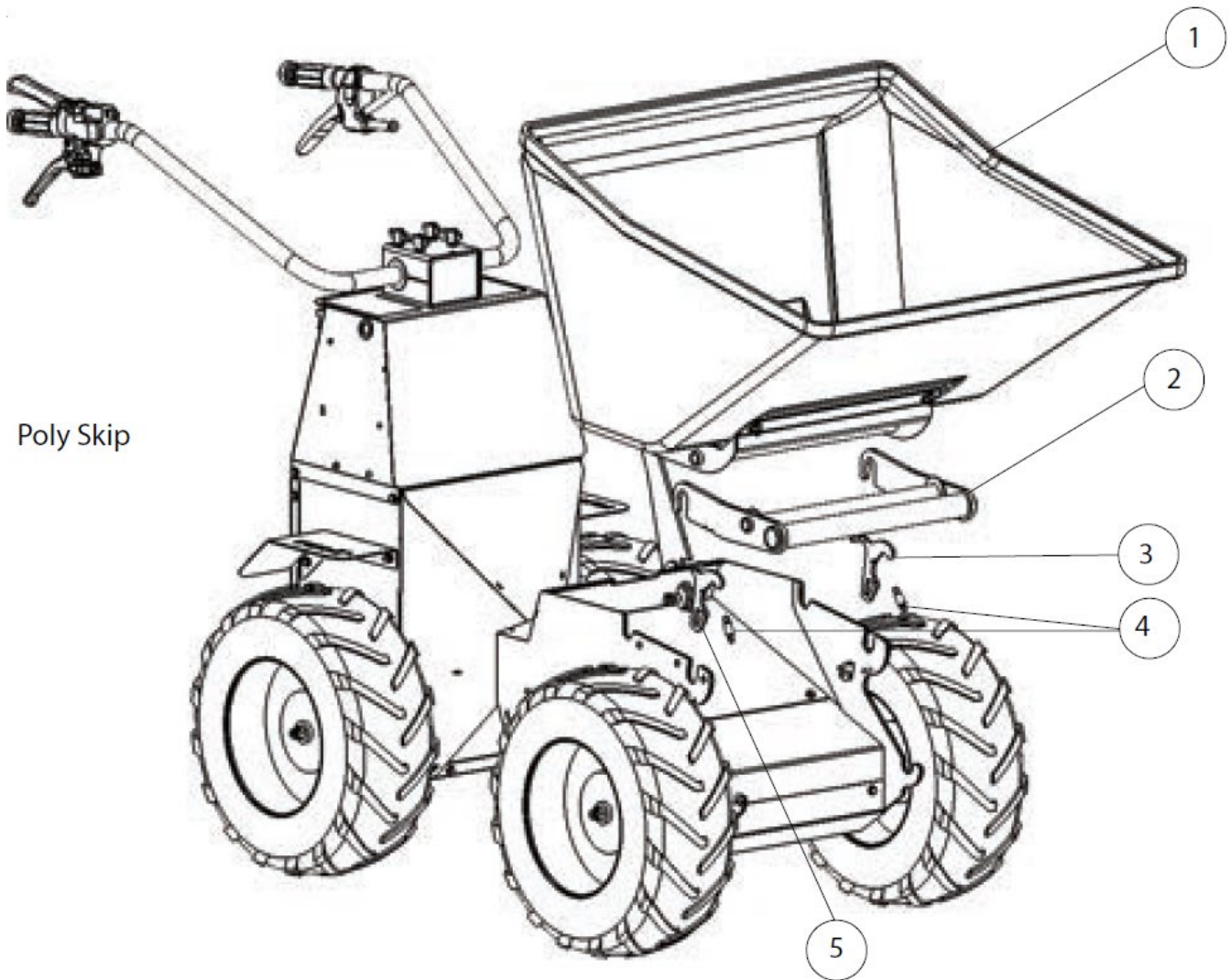
<u>NO.</u>	<u>PART NO.</u>	<u>PART NAME</u>	<u>QTY.</u>	<u>REMARKS</u>
1	108-01700	EB300 REAR CHASSIS 4WD RIVNUTS	1	
2	53-0193	COMP BUSH	2	
3	70-8001	TRANSAXLE (EB300)	1	
4	108-01800	AXLE RETAINER EB300 CT WA RIGHT	1	
5	108-01900	AXLE RETAINER EB300 CT WA LEFT	1	
6	108-99924	PLATE AXLE CLAMP RIGHT	1	
7	108-99925	PLATE AXLE CLAMP LEFT	1	
8	60-6515LHF	WHEEL EB300 FLOAT 16X6.5X8 LEFT	2	
9	60-6515RHF	WHEEL EB300 FLOAT 16X6.5X8 RIGHT	2	
10	108-01300	CONTROL BOX ASSY EB300 4WD	1	
11	108-99936	MUDGUARD TRUXTA EB300 LEFT	1	
12	108-99937	MUDGUARD TRUXTA EB300 RIGHT	1	
13	70-3200	Battery 12v 75Ah AGM	1	
14	108-99909	COVER REAR	1	
15	108-99910	BELLY PAN REAR EB300	1	
16	1-1896	EB300 BATTERY PACKER SIDE	2	
17	74-1055	STAPLE-BOLT/RIVET ON	2	
18	74-1056	STRAP CAM BUCKLE	1	

CONTROL PANEL



CONTROL PANEL

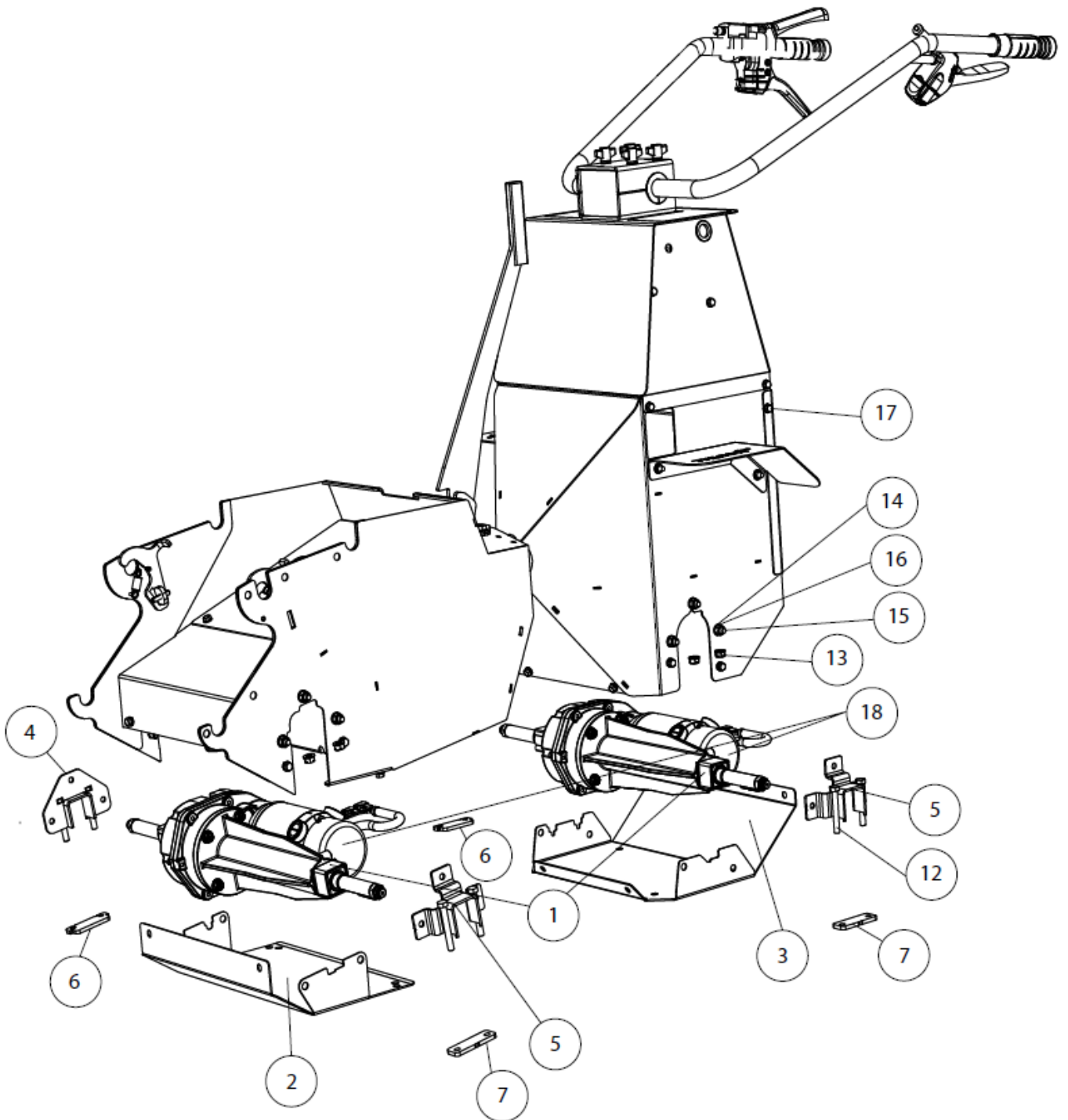
<u>NO.</u>	<u>PART NO.</u>	<u>PART NAME</u>	<u>QTY.</u>	<u>REMARKS</u>
1	108-01100	CONTROL BOX W/A	1	
2	105-09400	BATTERY CHARGER BRACKET ASSY	1	
3	70-0134	BATTERY CHARGER	1	
4	3-3100R	FOAM ADHESIVE	1	
5	70-0129	CURTIS DC MOTOR CONTROLLER	1	
6	70-7001	CURTIS EB500 CONTROLLER	1	
7	7-4006	SCREW PAN HD BZP M4X6	4	
8	105-99967	EB CONNECTOR RACK	1	
9	108-02200	POTENTIOMETER ASSY	1	
10	70-0127	E-STOP ASSY	1	
11	70-0133	ELECTRICAL DISPLAY	1	
12	70-0175	BRAKE OVERRIDE SWITCH	1	
13	70-8003	IGNITION SWITCH - CURTIS	1	
14	7-6056	BUTTON HD CAP M16 X 15	4	
15	7-6064	SCREW HD BZP M16 X12	2	
16	8-6007	NUT NYLOC M6	6	
17	4-6001	WASHER FORM A BZP M6	6	
18	3-4025	OPEN GROMMET Ø25	2	
19	108-99929	POTENTIOMETER BRACKET	1	
20	70-0140SP2	POTENTIOMETER	1	
21	101-99975	CLAMP LEVER POTENTIOMETER	1	
22	8-6001	NUT M6	2	
23	7-6025	BOLT M6 X 25	2	
24	21-1014	SPRING EXT EB (POTENTIOMETER)	1	
25	7-3016	SET HEX HD M3 X 16	1	
26	4-3001	FORM WASHER M3 X 16	2	



POLY TUB & CARRIER

<u>NO.</u>	<u>PART NO.</u>	<u>PART NAME</u>	<u>QTY.</u>	<u>REMARKS</u>
1	100-05800	POLY SKIP 300 LIME GREEN	1	
2	101-02100	SKIP CARRIER	1	
3	105-99965	SKIP RETAINER (LH)	1	
4	2-1020	SPRING SKIP RETAINER	1	
5	100-05800	POLY SKIP 300 LIME GREEN	2	

TRANSAXLE



TRANSAXLE

<u>NO.</u>	<u>PART NO.</u>	<u>PART NAME</u>	<u>QTY.</u>	<u>REMARKS</u>
1	70-8001	TRANSAXLE	2	
2	108-99905	BELLY PAN FRONT	1	
3	108-99910	BELLY PAN REAR	1	
4	108-01802	BACK PLATE RIGHT	2	
5	108-01901	AXLE BRACKET LEFT	2	
6	108-99924	AXLE BACK PLATE CLAMP RIGHT	2	
7	108-99925	AXLE PLATE CLAMP LEFT	2	
8	108-99935	MUDGUARD RH RIGHT	1	
9	108-99936	MUDGUARD LEFT	1	
10	108-99903	SKIP CATCH	1	
11	72-0200	SKIP CATCH HANDLE	1	
12	7-8097	BOLT M8 X 60	8	
13	8-8002	BINX NUT M8	8	
14	4-8006	FLAT WASHER M8	20	
15	7-8011	BOLT M8 X 20	12	
16	8-8008	NYLOCK NUT M8	12	
17	7-6064	FLANGE BOLT M6 X 12		
18	7-80011	TRANSAXLE MOTOR	1	

POWER/GND CABLE ASSY.

<u>NO.</u>	<u>PART NO.</u>	<u>PART NAME</u>	<u>QTY.</u>	<u>REMARKS</u>
1	70-6511	ATTACHMENT HARNESS	1	
2	70-6531	POTENTIOMETER HARNESS	1	
3	70-6532	MAIN WIRE HARNESS	1	
4	70-6533	E STOP TO BATTERY HARNESS	1	
5	70-6534	CONTROLLER HARNESS	1	
6	70-6535	BATTERY CABLES HARNESS	1	
7	70-6536	FRONT AXLE HARNESS	1	
8	70-6540	REAR AXLE HARNESS	1	
9	70-6530	EB300 COMPLETE HARNESS	1	
10	70-8003	IGNITION SWITCH - CURTIS	1	
11	70-0127	E-STOP ASSY	1	
12	70-3200	BATTERY 12v 75Ah AGM	2	
13	70-7015	CONTROLLER EB300	1	
14	70-0183	IN-LINE 100AMP MEGA FUSE 100AMP	1	
15	70-0188	FUSE 10AMP IGNITION	1	
16	70-0128	SOLENOID 24V	1	



Parchem Construction Supplies Pty Ltd

1956 Dandenong Road, Clayton VIC 3168, Australia

Phone: 1300 353 986

flextool.com.au

ABN 80 069 961 968

This manual summarises our best knowledge of the product based on the information available at the time of publication. You should read this manual carefully and consider the information in the context of how the product will be used. Our responsibility for products sold is subject to our standard terms and conditions of sale.

DISCLAIMER:

Any advice, recommendation, information, assistance or service provided by us in this manual is given in good faith and is believed by us to be appropriate and reliable. However, any advice, recommendation, information, assistance or service provided by us is provided without liability or responsibility PROVIDED THAT the foregoing shall not exclude, limit, restrict or modify the right entitlements and remedies conferred upon any person or the liabilities imposed upon us by any condition or warranty implied by Commonwealth, State or Territory Act or ordinance void or prohibiting such exclusion limitation or modification. The product can be expected to perform as indicated in this manual so long as operation and operational procedures of the individual products are followed as recommended in this manual.

Design and technical specifications may be subject to changes.

© This publication is copyright. All rights are reserved. Flextool is a registered trade mark and TuffTruk is a trade mark of Parchem Construction Supplies Pty Ltd.