

PARTS LIST

TAMPING RAMMER

MT-72FW

305-02602

MIKASA SANGYO CO.,LTD.

PARTS REMARK INDEX

How to read the marks and remarks used in this parts book.

Section 1 : Explanation of Code Use In “MRK” Column

OO : Interchangeable between the new part and the old one.

XX : Not Interchangeable between new and old.

OX : New part is usable for the old machine but the old part is not usable for the new machine.

XO : The old part is usable for the new machine but the new part is not usable for the old machine.

Note : In case of the lack of interchangeability between the new part and old part, a new part may be used by replacing all other parts found in the assembly. In this case, refer to section 2 for instruction on identifying other parts involved in a new assembly.

AD : Newly established(added)

DC : Suspended(discontinued)

NC : Part number changed

QC : Quantity used has been changed

NS : Not supplied individually but supplied in an assembly or a group.

AS : Special part designed to allow interchangeability between new and old part.

CR : Correction

Section 2 : Items Found In “Remark” Column

Serial Numbers - Where indicated, this indicates a serial number range (inclusive) where a particular part is used.

Model Number - Where indicated, this shows that the corresponding part is utilized only with this specific model number or model number variant.

or * : All parts with the same number following # or * belong to the same assembly. this part cannot be interchanged individually with any other assemblies to replace an old part (indicated by #), with a new part(indicated by *), then all other parts of that assembly must be replaced with new ones.

Note : If more than one of the same reference number is listed, the last one listed indicates newest(or latest)part available.

Section 3: Example

REF NO.	PART NO.	PART NAME	QTY	MRK	REMARKS
457(1)	5122-09230	Hinge Metal, Upper/24g	1		-1070 #3 (5)
457(2)	5072-09420	Hinge Metal, Upper M16	1	OX(3)	U1071-(6) * 3(7)

(1) Old part

(2) New part

(3) New part usable with old machine, but old part not usable with new machine (reference section 1).

(4) Old part number is used through this machine serial number.

(5) Old part, used in an assembly with other parts marked with #3. To use this part on a new machine, all other parts in this assembly must be replaced with old ones.

(6) New part put into use starting with this serial number and is still current.

(7) New part used in an assembly with other parts marked * 3, to use this part as a replacement for an old part, all other * 3 marked parts must be changed at the same time.

Section 4: Items Found In “MK2” Column

(only for suspended products)

! OO (“OO” is shown in figure) : The part shown in lower line is supplied.

! SD : Not available due to termination of production.

! NS : Not supplied individually, but supplied in an assembly or a group.

! PD : Supplied as unit product.

SS : Not available after stock run out.

(The contents of this parts catalog are subject to change without notice.)

MT-72FW (EXP/一般輸出)

2009/12/8

NAME PLATES

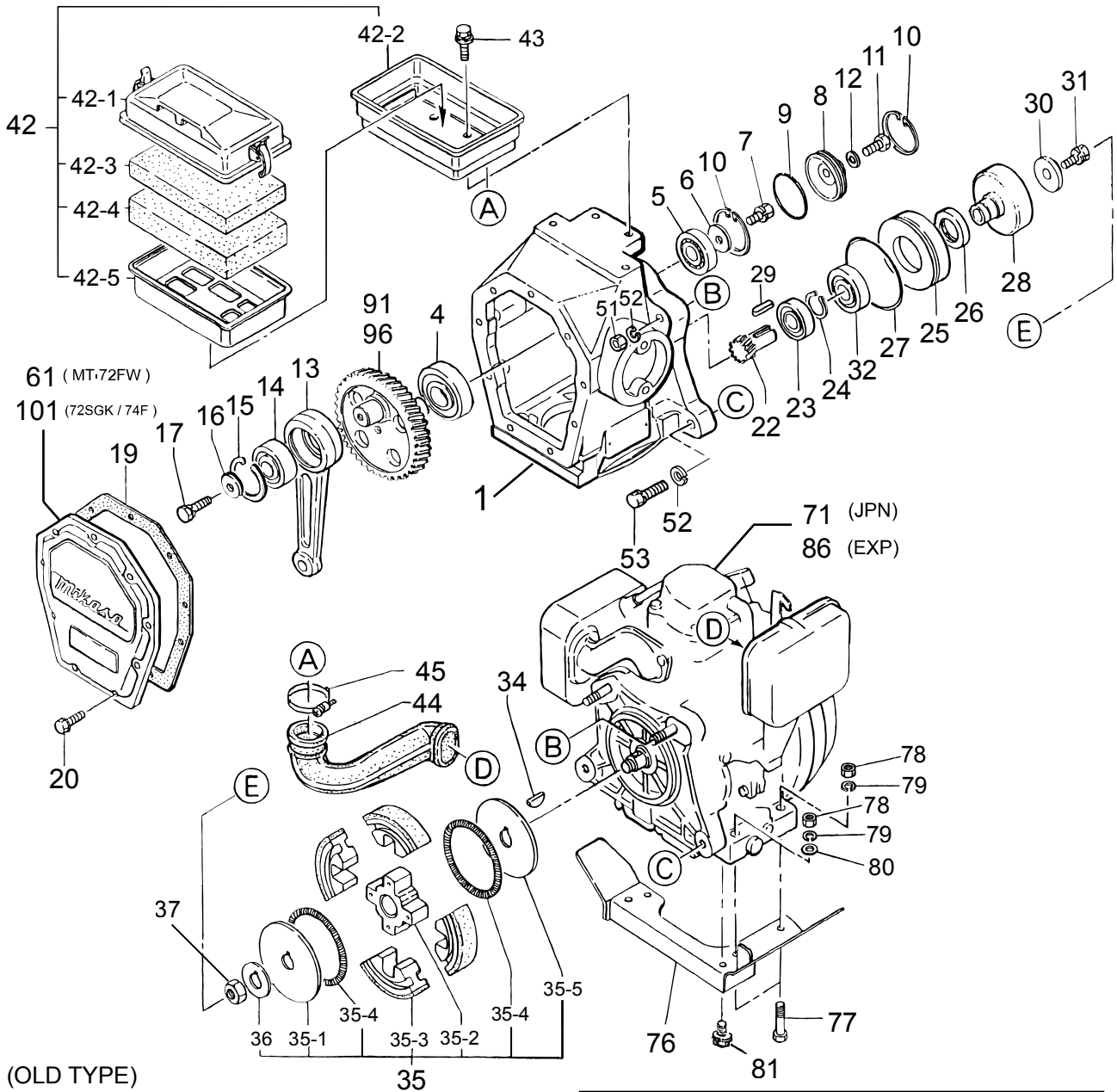
** 3JL **

REF NO.	PART NO.	PART NAME	Q' TY	MRK	MK2	REMARKS
1	9201-00240	DECAL, (M-MARK)	1			
4	9201-07000	DECAL, PRE-CLEANER /MT-W	1			
5	9201-08310	DECAL, CLEANER ELEMENT	1			
6	073-20045-20	LABEL, OIL CAUTION	1			
7	073-20050-20	LABEL CHOKE	1			
8	073-20044-50	LABEL, CAUTION	1			EXP
11	9202-11690	DECAL, LEVER OPERATION	1			FOR EXPORT
21	9202-10610	PLATE, SERIAL NO. /MT-72FW	1			EXP. L4239-
27	9202-02930	DECAL, SWITCH-ON	1			EXP
28	9202-03290	DECAL, CAUTION	1			EXP
29	9202-03980	DECAL, ELEMENT SET	1			EXP
30	9202-03990	DECAL, CAUTION (FUEL COCK)	1			EXP
31	9202-04370	DECAL, PRE-CLEANER	1			EXP
33	9202-09750	DECAL, CAUTION 4CYCLE /MT	1			EXP
36	9202-07690	DECAL, CAUTION (MANUAL)	1			EU
37	9202-08960	TAG, GASOLINE	1			EXP.
38	9202-09100	DECAL, CAUTION (RAMMER)	1			EU
66	9202-06020	DECAL, E/G RPM 3400-3600	1			
67	9202-10310	DECAL, EC NOISE REQ. LWA107	1			EU K4439-
82	9202-10850	DECAL, START-DRIVING/EXP	1			EXP.
83	9202-10870	DECAL, COUTION/CONBI PL4	1			EXP.
84	9202-10880	DECAL, CAUTION/COMBI	1			EXP.

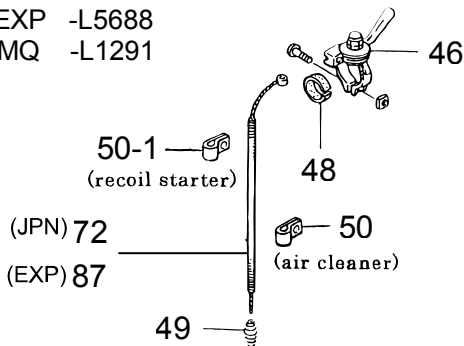
MT-72FW / FWL / FWA / SGK

3JMO

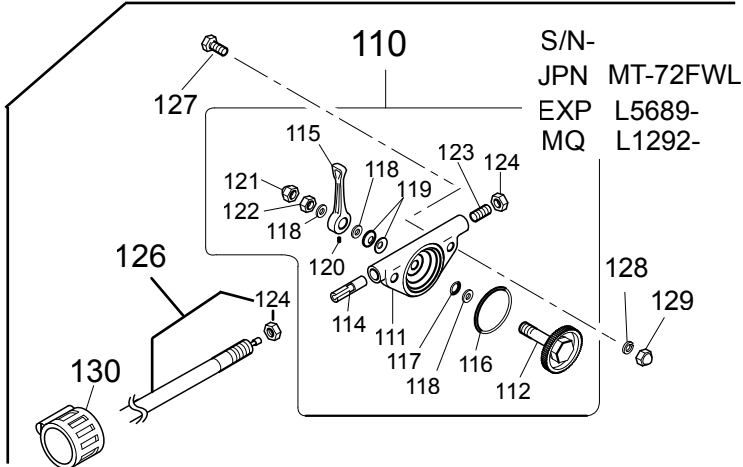
CRANKCASE & ENGINE / クランクケース&エンジン関係



S/N-
 JPN MT-72FW,FWL
 EXP -L5688
 MQ -L1291



S/N-
 JPN MT-72FWL
 EXP L5689-
 MQ L1292-



**MT-72FW
CRANKCASE & ENGINE**

2009/12/8

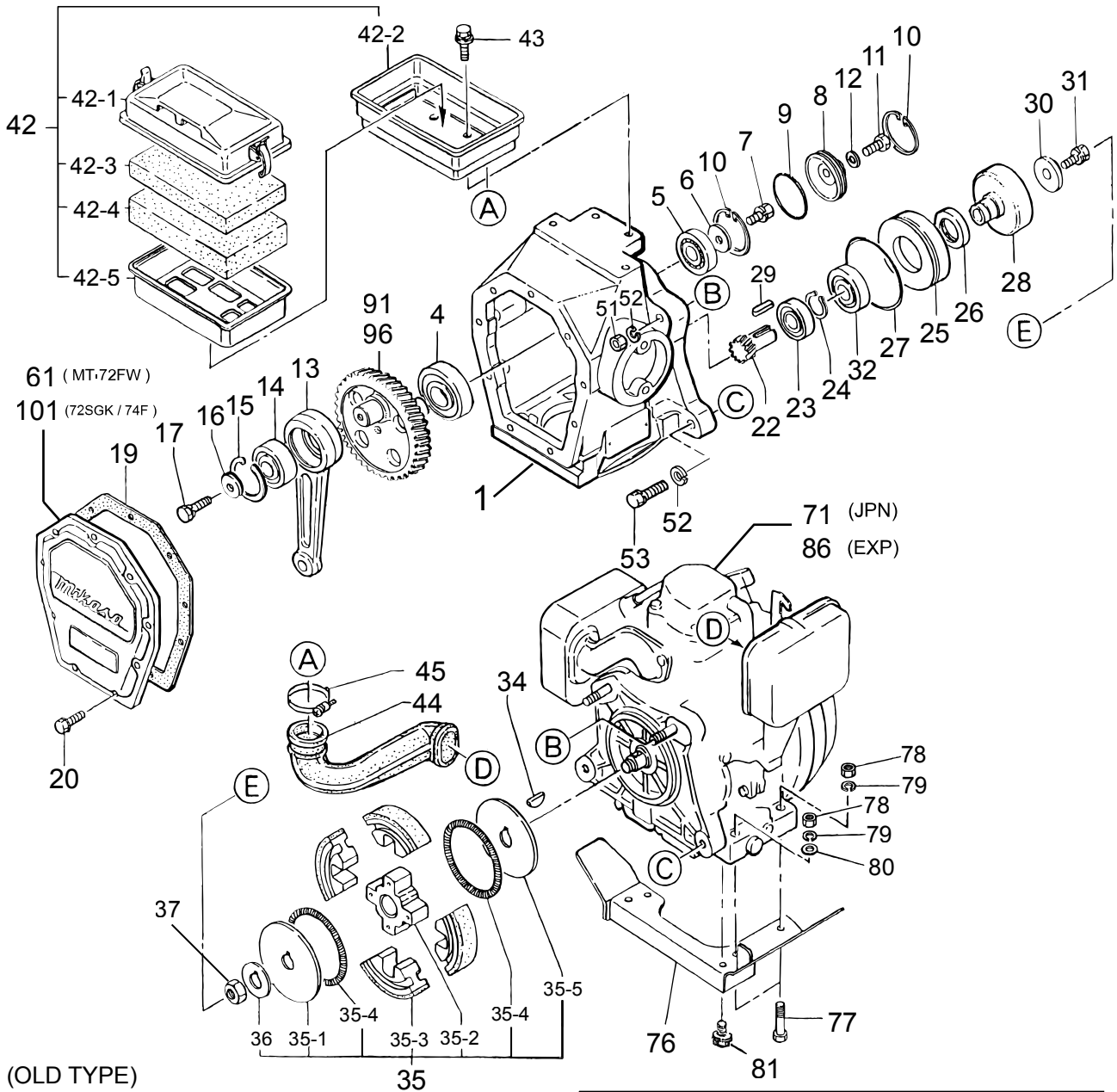
**** 3JM**

REF NO.	PART NO.	PART NAME	Q' TY	MRK	MK2	REMARKS
1	3711-13330	CRANK CASE /MT-76D	1	DC	!3711-13331	
1	3711-13331	CRANK CASE /MT-72, 76D	1			
4	0400-06207	BEARING 6207	1			
5	0400-06204	BEARING 6204	1			
6	9524-00130	WASHER 9304	1			
7	0022-10825	BOLT 8X25 H, SW	1			
8	3714-47650	BEARING COVER /MT-76D	1			
9	0503-00480	O-RING S-48	1			
10	0801-00480	STOP RING R-48	1			
11	0012-20610	BOLT 6X10 T	1			
12	0311-06100	PW M6	2			
13	3713-34730	CONNECTING ROD /MT-76D	1			
14	0400-06304	BEARING 6304	1			
15	0801-00520	STOP RING R-52	1			
16	9524-00130	WASHER 9304	1			
17	0022-10825	BOLT 8X25 H, SW	1			
19	3524-44450	PACKING, FRONT COVER/MT68	1			
20	0022-00620	BOLT 6X20 SW	9			
22	3614-49320	PINION /MT-72FW	1			
23	0400-06204	BEARING 6204	1			
24	0802-00350	STOP RING S-35	1			
25	3714-49600	SPACER /MT-76D, 86D	1			
26	0604-04010	OIL SEAL TC-40528	1			
27	0501-01000	O-RING G-100	1			
28	3614-49330	CLUTCH DRUM /MT-72FW	1			
29	9524-05610	KEY 5X5X19R	1			
30	9524-05490	LOCK WASHER /MTR, MT	1			
31	0022-10820	BOLT 8X20 H, SW	1		!!R000160	
32	0410-06007	BEARING 6007Z	1			
34	005-32042-01	WOODRUFF KEY	1			E/G PARTS
35	3624-54441	CLUTCH AY/CE120P 1.6T	1		SS!3614-63840	INCL. 35-1/-5
35 -1	9430-60020	CLUTCH GUIDE/B	1			
35 -2	9430-50050	CLUTCH BOSS C812	1			
35 -3	9430-20020	CLUTCH SHOE C812	4			
35 -4	9430-30021	CLUTCH SPRING	2			
35 -5	9430-60100	CLUTCH GAIDE/(A) 1.6T, 1C	1			
36	3010-10210	LOCK WASHER, CLUTCH	1			
37	017-31200-10	LOCK NUT	1			
42	3612-13800	AIR CLEANER AY /MT-72FW	1			INCL. 42-1/-5
42 -1	3540-30011	BODY /W-CLEANER	1			
42 -2	3610-10020	BACK PLATE CP /MT-72FW	1			
42 -3	3540-30030	ELEMENT, YELLOW /MT	1			
42 -4	3540-30040	ELEMENT, GRAY /MT	1			
42 -5	3540-30050	ELEMENT FRAME /MT	1			
43	0022-10820	BOLT 8X20 H, SW	4		!!R000160	
43	0022-00820	BOLT 8X20 SW	4	00		
44	3613-36010	INTAKE PIPE /MT-72FW	1			
45	9540-10230	HOSE BAND (B) AH-1032	1			
46	9562-25020	THROTTLE LEVER AY 25D	1	DC		
46	9562-25030	THROTTLE LEVER 25D-S18.5	1	DC		
46	9562-25030	THROTTLE LEVER 25D-S18.5	1	DC		EXP -L5688 MQ74F -L1291
46	9562-25030	THROTTLE LEVER 25D-S18.5	1			CIPSA M2295-
48	9594-03750	RUBBER, SLIP STOP	1	DC		EXP -L5688
48	9594-03750	RUBBER, SLIP STOP	1	DC		MQ74F -L1291
48	9594-03750	RUBBER, SLIP STOP	1			CIPSA M2295-
49	083-00000-10	COIL SPRING	1			E/G PARTS
50	9590-06120	CLIP (TCP2-10509B)	1	AD		
50 -1	206-75501-01	CLAMP COMPL	1	AD		FWL J7043-
51	0203-10080	NUT M10	2			
52	0302-10250	SW M10	2			
52	0302-10250	SW M10	4	QC		
53	0022-11050	BOLT 10X50 H, SW	2			
53	0012-21050	BOLT 10X50 T	2	00		
61	3610-10010	FRONT COVER /MT-72FW	1			
71	9112-11201	ENGINE AY EH12-2D(72FWL)	1		SX	JPN. E1231-
72	9561-06090	THROTTLE WIRE 730-850	1	DC		JPN
76	3612-14201	UNDER PROTECTOR /MT-72FW	1			
77	0012-20840	BOLT 8X40 T	3			FW/FWL/FWA
78	0203-08060	NUT M8	3			FW/FWL/FWA

MT-72FW / FWL / FWA / SGK

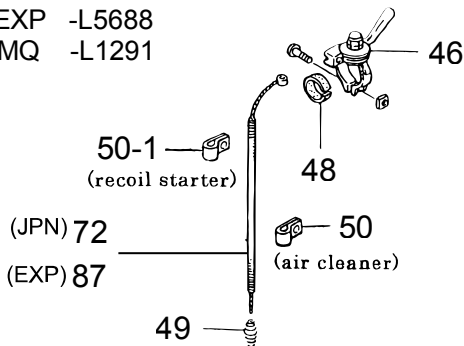
3JMO

CRANKCASE & ENGINE / クランクケース&エンジン関係

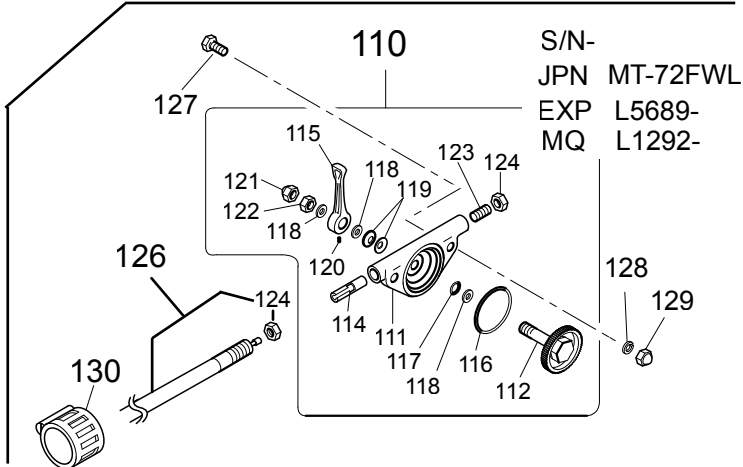


(OLD TYPE)

S/N-
JPN MT-72FW,FWL
EXP -L5688
MQ -L1291



S/N-
JPN MT-72FWL
EXP L5689-
MQ L1292-



**MT-72FW
CRANKCASE & ENGINE**

2009/12/8

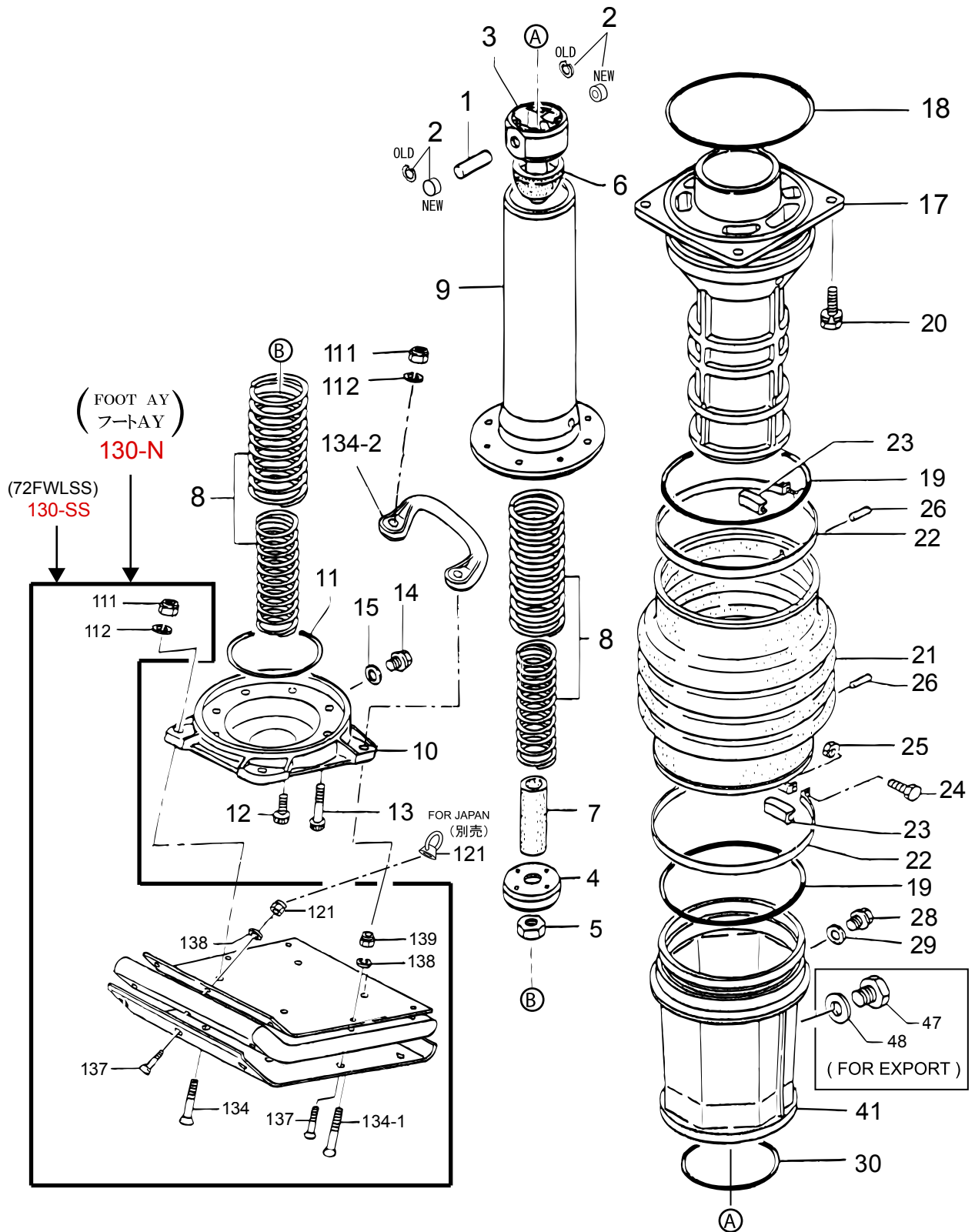
**** 3JM**

REF NO.	PART NO.	PART NAME	Q' TY	MRK	MK2	REMARKS
79	0302-08200	SW M8	3			FW/FWL/FWA
80	0311-08160	PW M8	3			FW/FWL/FWA
81	001-13081-80	BOLT AND WASHER ASSY	2			E/G PARTS
86	9112-11202	ENGINE AY EH12-2D EPA	1			EXP. E1231-
87	9561-06040	THROTTLE WIRE S620-740	1	DC		EXP -L5688
87	9561-06040	THROTTLE WIRE S620-740	1	DC		MQ74F -L1291
87	9561-06040	THROTTLE WIRE S620-740	1			CIPSA M2295-
91	3613-35870	CRANK GEAR /MT-72FW	1			FOR 72FW
96	3613-37130	CRANK GEAR /MT-72FWL	1			FOR 72FWL
101	3610-10030	FRONT COVER (MT-74F)	1			MQ 74F
101	3610-10080	FRONT COVER (MT-72SGK)	1			MT-72SGK
101	3610-10160	FRONT COVER/MT-80F	1			80F
110	3629-10060	THROTTLE LEVER AY /MT-55	1	XX		INCL. 111-123
111	3623-41550	THROTTLE BODY /MT-55	1	XX		72FWA
111	3623-41550	THROTTLE BODY /MT-55	1	XX		EXP. L5689-
111	3623-41550	THROTTLE BODY /MT-55	1	XX		MQ74F L1292-
112	3629-10090	THROTTLE, GEAR CP, W/BOLT	1	XX		72FWA
112	3629-10090	THROTTLE, GEAR CP, W/BOLT	1	XX		EXP. L5689-
112	3629-10090	THROTTLE, GEAR CP, W/BOLT	1	XX		MQ74F L1292-
112	3629-10090	THROTTLE, GEAR CP, W/BOLT	1	XX		72FWA
114	3624-55620	SLIDER /MT-55	1	XX		EXP. L5689-
114	3624-55620	SLIDER /MT-55	1	XX		MQ74F L1292-
115	3624-55630	THROTTLE LEVER /MT-55	1	XX		72FWA
115	3624-55630	THROTTLE LEVER /MT-55	1	XX		EXP. L5689-
115	3624-55630	THROTTLE LEVER /MT-55	1	XX		MQ74F L1292-
116	0501-00450	O-RING G-45	1	XX		72FWA
116	0501-00450	O-RING G-45	1	XX		EXP. L5689-
116	0501-00450	O-RING G-45	1	XX		MQ74F L1292-
117	0502-00100	O-RING P-10	1	XX		72FWA
117	0502-00100	O-RING P-10	1	XX		EXP. L5689-
117	0502-00100	O-RING P-10	1	XX		MQ74F L1292-
118	0311-10160	PW M10	3	XX		72FWA
118	0311-10160	PW M10	3	XX		EXP. L5689-
118	0311-10160	PW M10	3	XX		MQ74F L1292-
119	0339-10070	CONICAL SPRING WASHER	2	XX	!!0321-10180	72FWA
119	0321-10180	CONICAL SPRING WASHER M10	2			72FWA
119	0321-10180	CONICAL SPRING WASHER M10	2	XX		EXP. L5689-
119	0321-10180	CONICAL SPRING WASHER M10	2	XX		MQ74F L1292-
120	0962-06006	SOCKET HEAD SCREW 6X6	1	XX		72FWA
120	0962-06006	SOCKET HEAD SCREW 6X6	1	XX		EXP. L5689-
120	0962-06006	SOCKET HEAD SCREW 6X6	1	XX		MQ74F L1292-
121	0221-31008	CAP NUT M10	1	XX		72FWA
121	0221-31008	CAP NUT M10	1	XX		EXP. L5689-
121	0221-31008	CAP NUT M10	1	XX		MQ74F L1292-
122	0204-10060	NUT M10, H=6	1	XX		72FWA
122	0204-10060	NUT M10, H=6	1	XX		EXP. L5689-
122	0204-10060	NUT M10, H=6	1	XX		MQ74F L1292-
123	0962-08020	SOCKET HEAD SCREW 8X20	1	XX		72FWA
123	0962-08020	SOCKET HEAD SCREW 8X20	1	XX		EXP. L5689-
123	0962-08020	SOCKET HEAD SCREW 8X20	1	XX		MQ74F L1292-
124	0204-08050	NUT M8, H=5	2	XX		72FWA
124	0204-08050	NUT M8, H=5	2	XX		EXP. L5689-
124	0204-08050	NUT M8, H=5	2	XX		MQ74F L1292-
126	9561-00045	THROTTLE WIRE S680-780/84	1	XX		72FWA/SGK
126	9561-00045	THROTTLE WIRE S680-780/84	1	XX		EXP. L5689-
126	9561-00045	THROTTLE WIRE S680-780/84	1	XX		MQ74F L1292-
127	0012-20620	BOLT 6X20 T	2	XX		72FWA
127	0012-20620	BOLT 6X20 T	2	XX		EXP. L5689-
127	0012-20620	BOLT 6X20 T	2	XX		MQ74F L1292-
128	0302-06150	SW M6	2	XX		72FWA
128	0302-06150	SW M6	2	XX		EXP. L5689-
128	0302-06150	SW M6	2	XX		MQ74F L1292-
129	0221-30605	CAP NUT M6	2	XX		72FWA
129	0221-30605	CAP NUT M6	2	XX		EXP. L5689-
129	0221-30605	CAP NUT M6	2	XX		MQ74F L1292-
130	3030-10450	BAND	1	XX		72FWA
130	3030-10450	BAND	1	XX		EXP. L5689-
130	3030-10450	BAND	1	XX		MQ74F L1292-

MT-72FW / FWL / FWA / SGK

GUIDE CYLINDER & FOOT / ガイドシリンダ & フート関係

3HV0



MT-72FW
GUIDE CYLINDER & FOOT

2009/12/8

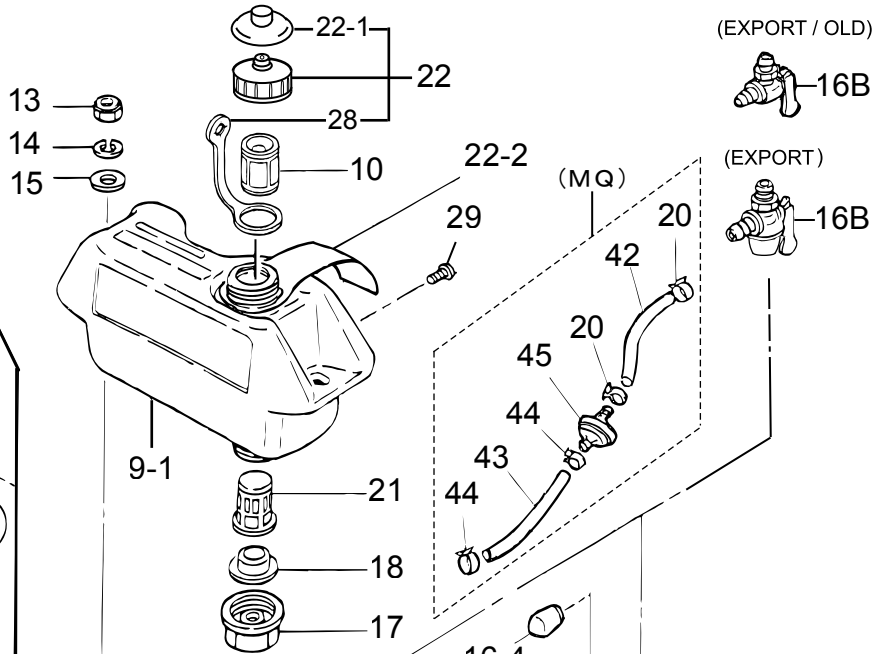
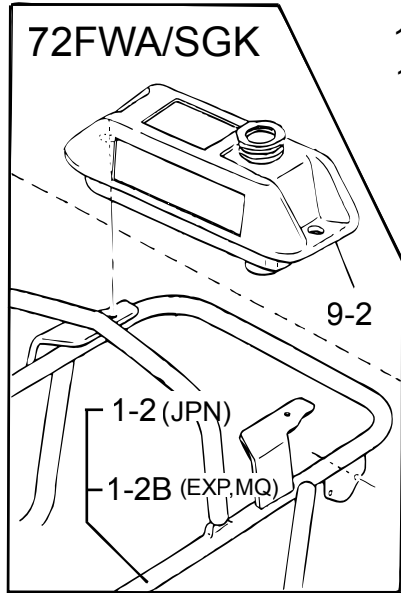
** 3HV

**

REF NO.	PART NO.	PART NAME	Q' TY	MRK	MK2	REMARKS
1	3524-23290	PISTON PIN	1			
2	0801-00150	STOP RING R-15	2	DC		#4
2	3634-57870	PISTON PIN PLUG/MT	2	AD		*4 JP M3011-
2	3634-57870	PISTON PIN PLUG/MT	2	AD		*4EXP. M6945-
2	3634-57870	PISTON PIN PLUG/MT	2	AD		*4 MQ M3420-
2	3634-57870	PISTON PIN PLUG/MT	2	AD		*4SGK. M1101-
3	3553-34300	PISTON ROD /MT-63W	1		!R00095	#2
3	3553-38690	PISTON ROD /MT-63W	1	XX	!R000175	*2 JP G3193-
3	3613-44360	PISTON ROD/MT-72, 63	1	XO		*4 JP M3011-
3	3553-38690	PISTON ROD /MT-63W	1	XX	!R000175	*2EXP. G1641-
3	3613-44360	PISTON ROD/MT-72, 63	1	XO		*4EXP. M6945-
3	3553-38690	PISTON ROD /MT-63W	1	XX	!R000175	*2 MQ G1451-
3	3613-44360	PISTON ROD/MT-72, 63	1	XO		*4 MQ M3420-
3	3613-44360	PISTON ROD/MT-72, 63	1	XO		*4SGK M1101-
4	3554-47240	PISTON END /MT-63W	1		!R00095	#2
4	3554-52340	PISTON END/MT-63W, 4HOLE	1	XX		*2 JP G3193-
4	3554-52340	PISTON END/MT-63W, 4HOLE	1	XX		*2EXP. G1641-
4	3554-52340	PISTON END/MT-63W, 4HOLE	1	XX		*2 MQ G1451-
5	0201-16130	NUT M16, P1.5	1			#2
5	0201-18150	NUT M18, P1.5	1	XX		*2 JP G3193-
5	0201-18150	NUT M18, P1.5	1	XX		*2EXP G1641-
5	0201-18150	NUT M18, P1.5	1	XX		*2 MQ G1451-
6	3554-47250	STOPPER, UPPER /MT-63W	1			
7	3554-47260	STOPPER, LOWER /MT-63W	1			
8	3554-47270	MAIN SPRING/MT-63W, 72FW	2			FOR 72FW
8	3554-50630	MAIN SPRING /MT-63WL	2			72FWL, 72FWA
9	3553-34310	SPRING CYLINDER /MT-63W	1			
10	3552-13000	FOOT PLATE 16 /MT-63W	1			FOR 72FW
10	3552-14140	FOOT PLATE 14 /MT-63WL	1			72FWL, 72FWA
11	0501-00900	O-RING G-90	1			
12	0015-21020	SOCKET HEAD BOLT 10X20 T	4			
13	0015-21040	SOCKET HEAD BOLT 10X40 T	4			
14	9534-05270	PLUG 1/4X14 13L	1			
15	9534-05260	PACKING 1/4 (CU)	1			
17	3552-13010	GUIDE CYLINDER /MT-63W	1			
18	0502-01500	O-RING P-150	1			
19	0509-31500	O-RING JASO3150	2			
20	0022-11035	BOLT 10X35 H, SW	4			
21	3540-10010	BELLOWS, ORANGE/MT-70V, 63W	1			
22	3543-36352	BELLOWS CLAMP (1.6T) 171D	2			
23	3544-42340	BAND GUIDE, BELLOWS /MT68	2			
24	0012-20840	BOLT 8X40 T	2			
25	0203-08060	NUT M8	2			
26	3544-46170	PIN 6D-8.5L	2			
28	9534-05270	PLUG 1/4X14 13L	1			
29	9534-05260	PACKING 1/4 (CU)	1			
30	0501-00950	O-RING G-95	1			#6
30 -1	0502-00950	O-RING P-95	1	XX		*6
41	3551-13950	PROTECTION SLEEVE/MT-72FW	1		!R000216	JPN, 80F, #6
41	3551-19020	SLEEVE/72FW, 65HE, P/JP, EXP	1	XX		FWA, R6064-*6
41	3551-19020	SLEEVE/72FW, 65HE, P/JP, EXP	1			SGK, R1341-*6
41	3551-19020	SLEEVE/72FW, 65HE, P/JP, EXP	1			80F, R1831-*6
41	3551-13960	PROTECTION SLEEVE/MT-72FW	1		!R000211	EXP, #6
41	3551-19030	PROTECTION SLEEVE/72FW/EXP	1	XX		FW, R2452-*6
47	3664-60300	OIL GAUGE ASSY / MTX	1			EXP
48	9534-04670	COPPER PACKING 17X25.5X1	1			EXP
111	0227-11214	NYLON NUT M12	4			
112	0302-12300	SW M12	4			
121	9590-10413	EYE NUT M10	1			JPN, VIE.
121	0227-11012	NYLON NUT M10	1			EXP
130	3629-10140	FOOT AY 285-SF-JPN	1		!3669-10020	#5, JP, OLD
130	3629-10130	FOOT AY 285W-SF-EXP	1		!3669-10020	#5, EXP, OLD
130 -N	3669-10020	FOOT AY 285 M4B/S80/MTX70	1	00		#5, JP, EXP
130 -SS	3529-10090	FOOT AY, PLASTIC /MT68	1			FOR 72FWLSS
130 -SS	3520-10270	NUT/MT-68SGK	4			-SS
134	0016-11253	SUNK HEAD BOLT 12X65 H	4			#5, 72FW/FWL
134	0091-10034	BOLT, SQUARE NECK 12X65	4			*5, 72FW/FWL
134	0016-11259	SUNK HEAD BOLT 12X95 H	4			FOR 72FWLSS
134	0016-11253	SUNK HEAD BOLT 12X65 H	2	QC		#5, MQ/OP
134	0091-10034	BOLT, SQUARE NECK 12X65	2	XO		*5, MQ/OP
134	0016-11253	SUNK HEAD BOLT 12X65 H	2			#5, AUS
134	0091-10034	BOLT, SQUARE NECK 12X65	2	XO		*5, AUS
134 -1	0016-11259	SUNK HEAD BOLT 12X95 H	2	AD		#5, MQ/OP
134 -1	0091-10035	BOLT, SQUARE NECK 12X95	2	XO		*5, MQ/OP
134 -1	0016-11259	SUNK HEAD BOLT 12X95 H	2			#5, AUS
134 -1	0091-10035	BOLT, SQUARE NECK 12X95	2	XO		*5, AUS
134 -2	3633-43390	GRIP HANDLEBAR (FOOT/MT)	1	AD		MQ/OPTION
134 -2	3633-43390	GRIP HANDLEBAR (FOOT/MT)	1			AUST. L5689-
137	0016-11051	SUNK HEAD BOLT 10X55 H	7			#5, OLD
137 -1	0091-10036	BOLT, SQUARE NECK 10X55	3	XO		*5
137 -2	0091-10033	BOLT, SQUARE NECK 10X50	4	XO		*5
138	0302-10250	SW M10	7			
139	0227-11012	NYLON NUT M10	6			

MT-72FW/FWL/FWA/SGK
TANK & HANDLE/ タンク&ハンドル関係

3HU0



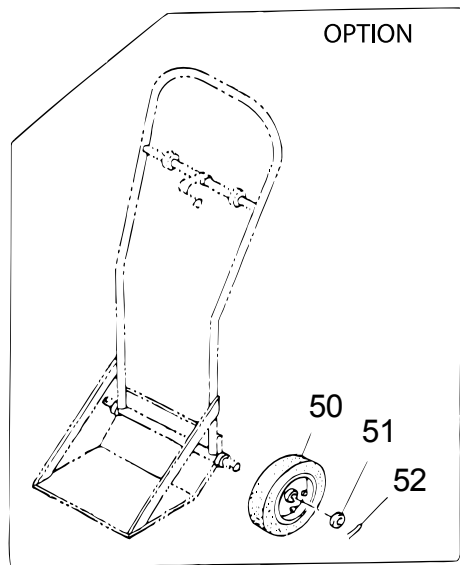
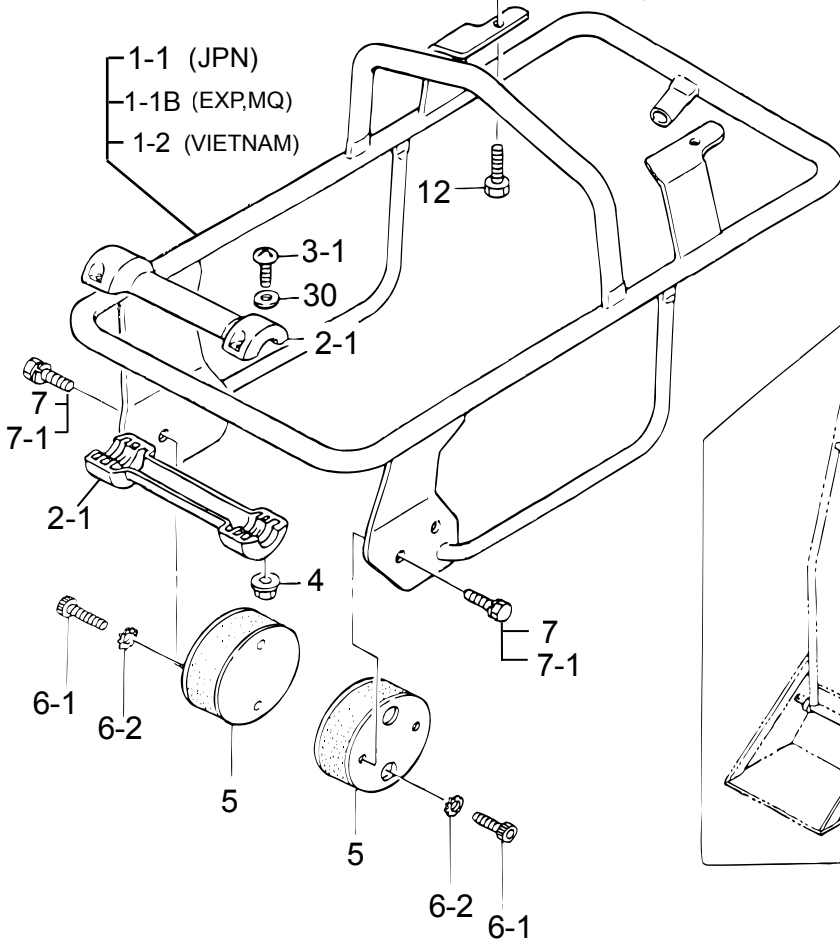
(EXPORT / OLD)

(EXPORT)

1-1 (JPN)

1-1B (EXP, MQ)

1-2 (VIETNAM)



MT-72FW
TANK & HANDLE

2009/12/8

** 3HU

**

REF NO.	PART NO.	PART NAME	Q' TY	MRK	MK2	REMARKS
1 -1B	3611-15200	HANDLE /MT-72, 74F	1		!R000151	EXP. -L5688
1 -1B	3611-16060	HANDLE /MT-74F (MQ)	1		!R000151	MQ74F -L1291
1 -1B	3611-16060	HANDLE /MT-74F (MQ)	1		!R000151	CIPSA M2295-
1 -1	3611-18130	HANDLE/MT-72FWL	1			JPN F1924-
1 -2	3611-17480	HANDLE /MT-72FWA	1	XX	!3611-17770	JPN 72FWA
1 -2	3611-17770	HANDLE /MT-72FWA /JPN	1	00		A/JPN L1692-
1 -2	3611-17770	HANDLE /MT-72FWA /JPN	1			VIETNAM
1 -2B	3611-17750	HANDLE /MT-72FW, 74F, 84F	1	XX		EXP. L5689-
1 -2B	3611-17750	HANDLE /MT-72FW, 74F, 84F	1	XX		MQ74F L1292-
2 -1	9552-00052	ROLLER, W/PIN, MT	2		SS!9552-00053	EXP
3 -1	0910-05025	SCREW 5X25	4			EXP F1924-
4	0226-10505	FLANGE NUT M5 H	4			EXPORT
5	3513-19900	SHOCK ABSORBER	2			
6 -1	0015-21020	SOCKET HEAD BOLT 10X20 T	4			
6 -2	0331-21009	TOOTHED LOCK WASHER B M10	4			
7	0012-21020	BOLT 10X20 T	4			
7 -1	0302-10250	SW M10	4			
9 -1	3611-16910	FUEL TANK (2. 5L)P, G/MT	1			EXPORT
9 -1	3611-16140	FUEL TANK P2. 5L (GASOLINE)	1	XX		JAPAN
9 -2	3621-16860	F. TANK 2L (GRAY)/JP	1	XX		72FWA, SGK
9 -2	3621-16890	F. TANK 2L (GRAY)/EXP	1	XX		EXPORT 72FWA
10	9544-04890	FILTER, TANK /MT	1			JAPAN
10	9544-04890	FILTER, TANK /MT	1			IMER 2002/4-
12	0012-20830	BOLT 8X30 T	2		SX	
13	0227-10809	NYLON NUT M8	2			
14	0302-08200	SW M8	2			
15	9524-01450	WASHER 8. 5X22X3	2			
16 B	9544-06000	FUEL COCK AY N18L-02	1			EXPORT, OLD
16 B	9543-00720	FUEL COCK AY /CVL-08	1	00		EXP. L5689-
16 B	9543-00720	FUEL COCK AY /CVL-08	1	00		MQ74F L1292-
16	9544-05990	FUEL COCK AY CVL-00	1	XX		JAPAN
16 -1	064-20014-20	SCREEN	1			E/G JPN
16 -2	064-20014-30	C-07 RUBBER PACKIN##	1			E/G JPN
16 -3	064-20014-10	CUP	1			E/G JPN
16 -4	3534-32250	CAP	1			EXPORT
17	3514-37785	HOLDER, COCK /MT	1			
18	9544-06020	PACKING, FUEL TANK/MT, MTR	1			
20	9544-04590	HOSE BAND 9. 5D	2	MQ		#3
20	9544-06420	HOSE BAND 10. 5	2	XX		*3
21	9544-06010	STRAINER (#110)	1	00		
22	3619-10021	TANK CAP CP (ORANGE)/FW	1			
22	3619-10070	TANK CAP AY (OR, DB)/MT	1			MQ
22 -1	3624-58350	SUB CAP (BLACK)/PE/MT	1	AS		
22 -2	9202-08960	TAG, GASOLINE	1	AD		EXPORT
22 -2	9201-09500	TAG, GASOLINE (JAPANESE)	1	AD		JAPAN
28	3534-49010	STRAP, OIL TANK /MT-HS	1			72FW/FWL
29	0091-10014	PAN HEAD SCREW 8X10	2			EXPORT
30	0311-05080	PW M5	4	AD		EXP F1924-
41	3024-18110	FUEL HOSE B-270	1	DC		#3
41	9590-26101	FUEL HOSE /270L	1	XX		*3
41	9590-26102	FUEL HOSE /320L	1			72SGK
41	9590-26199	FUEL HOSE/1M	1			1M
42	3514-35160	FUEL HOSE B-95	1	MQ		
43	3514-36350	FUEL HOSE R-150L D8	1	MQ		
44	9544-03030	HOSE BAND (8)	2	MQ		
45	3014-19750	FUEL FILTER CP, MQ75MIC.	1	MQ		
50	9593-00370	WHEEL 18X200X50	2		SS!	OPTION
51	0311-18260	PW M18	4			OPTION
52	0252-03030	SPLIT COTTER PIN 3X30	2			OPTION



MIKASA SANGYO CO.,LTD.

HEAD OFFICE

NO. 4-3. 1-CHOME, SARUGAKU-CHO, CHIYODA-KU
TOKYO, JAPAN