

PARTS LIST

HONDA ENGINE

GX100U ***-KRB4***
-KRBD

FOR MIKASA PRODUCTS

805-06003

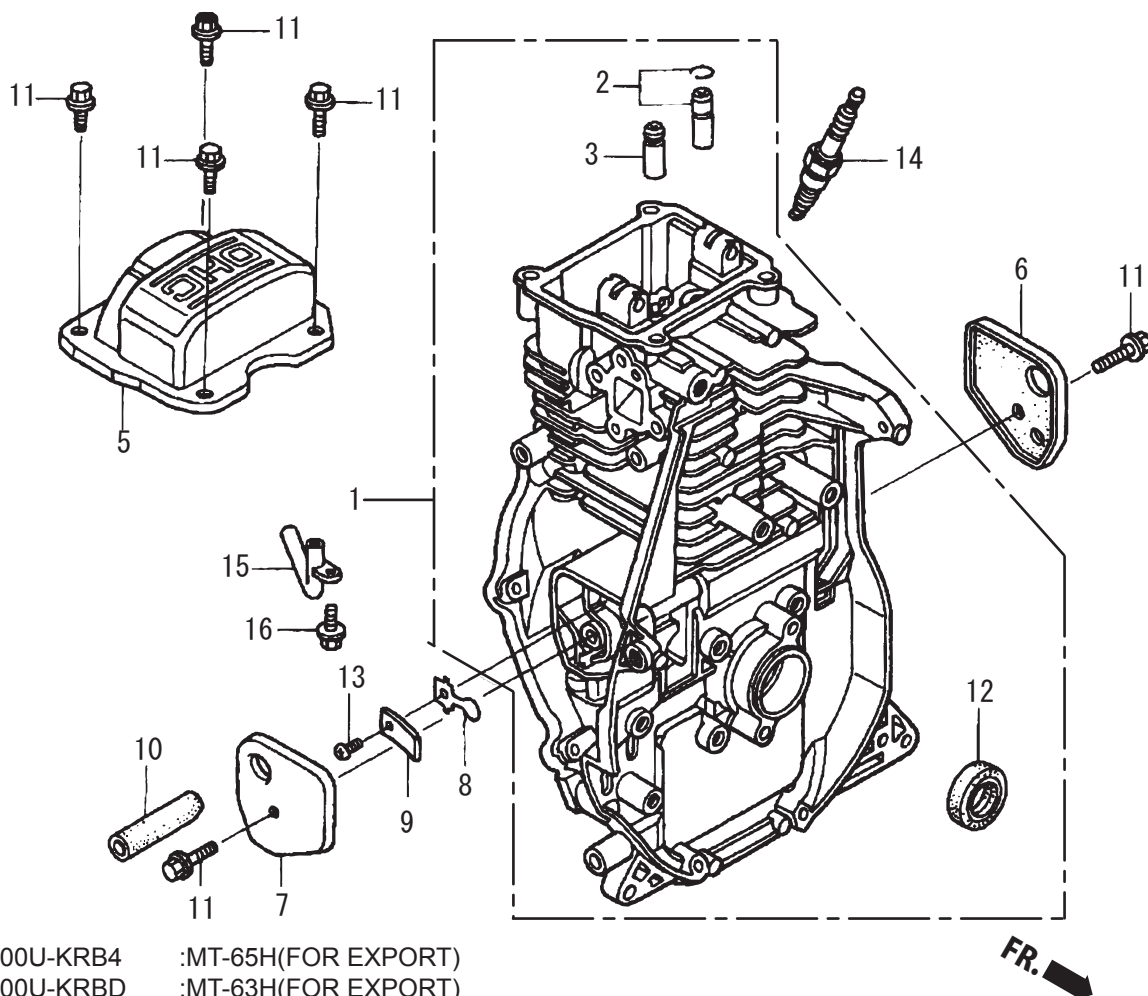
FOR MODEL

TAMPING RAMMER
MT-65H/65HE/63H

GX100U-KRB4 :MT-65H/HE (FOR EXPORT)
GX100U-KRBD :MT-63H (FOR EXPORT)

MIKASA SANGYO CO., LTD.

1. CYLINDER BARREL



GX100U-KRB4 :MT-65H(FOR EXPORT)
 GX100U-KRBD :MT-63H(FOR EXPORT)

GX100U-KRB4/KRBD (FOR MT-65H/63H)

2012/4/2

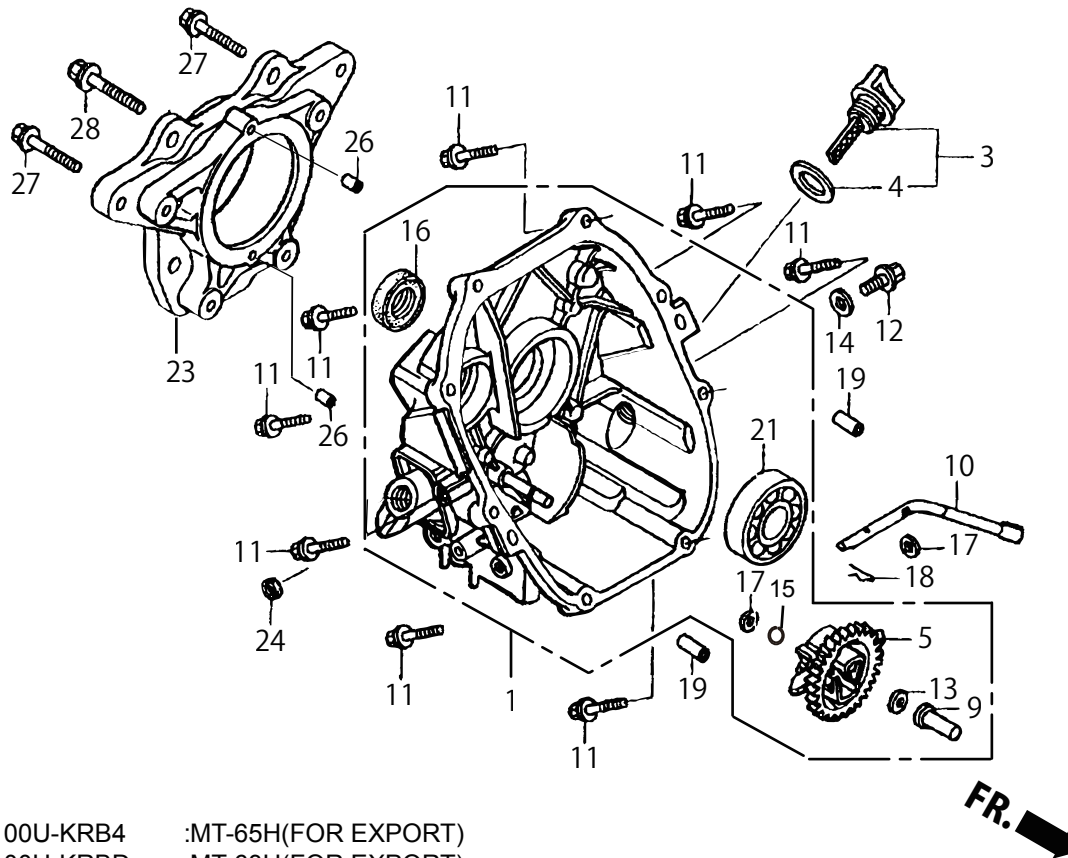
1. CYLINDER BARREL

** BAV

**

REF NO.	PART NO.	PART NAME	Q' TY	MRK	MK2	REMARKS
1	12000-Z0D-V00	BARREL ASSY., CYLINDER / U	1			
2	12201-Z0D-305	GUIDE ASS'Y, EX VALVE(OS)	1			
3	12204-Z0D-305	GUIDE, INLET VALVE (O. S.)	1			
5	12311-Z0D-000	COVER, HEADT	1			
6	12355-Z0D-000	COVER COMP A, BREATHER	1			
7	12365-Z0D-000	COVER COMP B, BREATHER	1			
8	15571-Z0D-V71	VALVE, OIL OUTLET	1			
9	15572-ZM7-000	PLATE, STOPPER	1			
10	15721-Z0D-000	TUBE, BREATHER / MT-65H	1			
11	90014-952-000	VOLT, FLANGE 6X14(CT200)	6			
12	91202-KJ9-003	OIL SEAL 20X32X6	1			
13	93500030050A	SCREW 3X5	1			
14	98056-55757	PLUG, SPARK (U16FSR-UB)	1			
14	98056-55777	PLUG, SPARK (CR5HSB)	1		!065-01400-2M	
14	065-01400-2M	PLUG, SPARK(CR5HSB)/EXP	1			
15	15171-Z0D-V00	PIPE, BREATHER	1			
16	90008-ZM7-000	BOLT 4X10	1			

2. CRANK CASE COVER



GX100U-KRB4 :MT-65H(FOR EXPORT)
 GX100U-KRBD :MT-63H(FOR EXPORT)

GX100U-KRB4/KRBD (FOR MT-65H/63H)
 2. CRANK CASE COVER

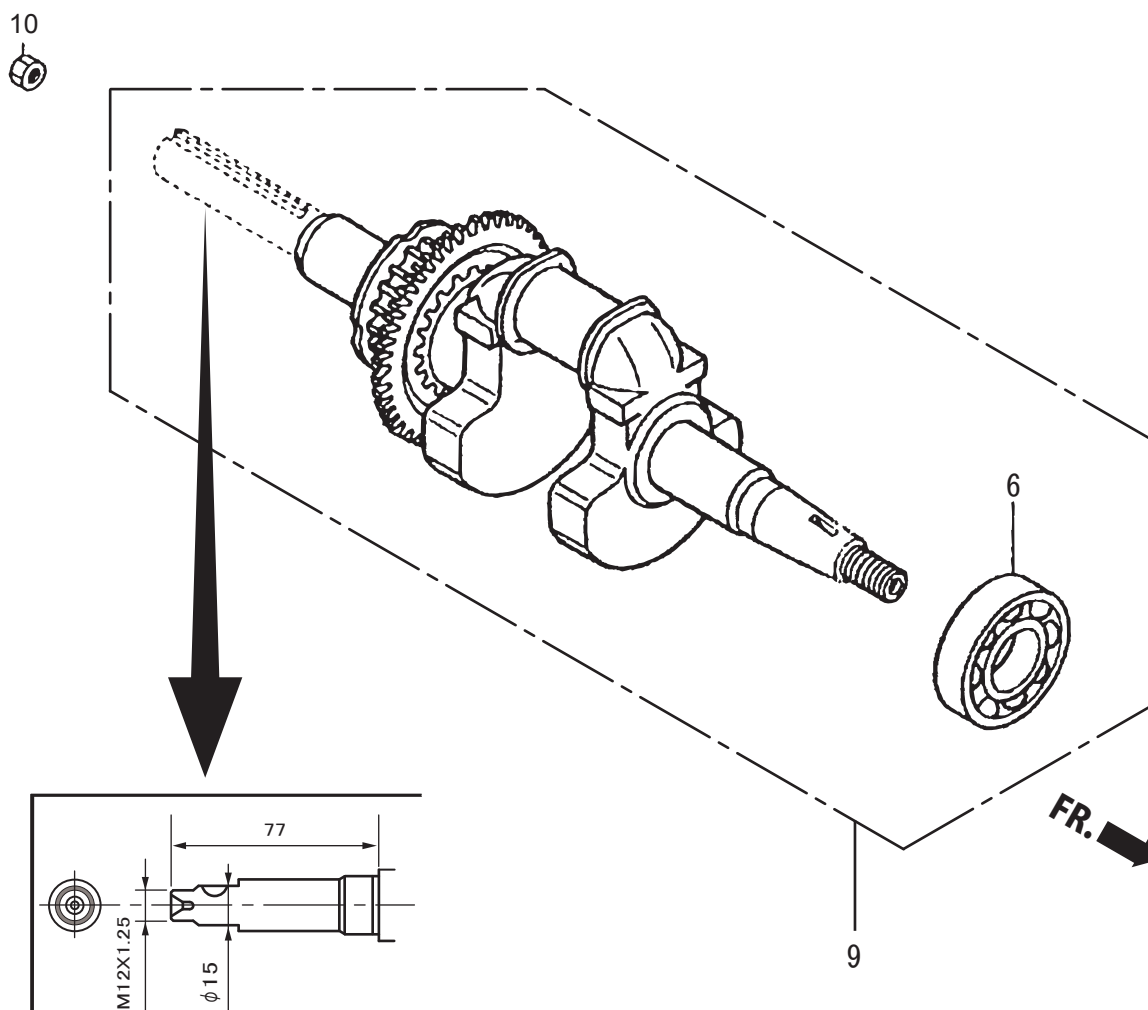
2012/4/2

** BAW

**

REF NO.	PART NO.	PART NAME	Q' TY	MRK	MK2	REMARKS
1	11300-Z0D-409	COVER ASSY., CRANK CASE	1			
3	15600-ZM7-003	OIL FILLER CAP ASSY	1			
4	15625-ZE1-003	PACKING, OIL FILLER CAP	1			
5	16510-ZL8-000	GOVERNOR ASSY.	1			
9	16531-ZE1-000	SLIDER, GOVERNOR	1			
10	16541-Z0D-000	SHAFT, GOVERNOR ARM	1			
11	90121-952-000	FLANGE BOLT 6X25	8			
12	90131-ZE1-000	BOLT, DRAIN PLUG	1			
13	90451-ZE1-000	THRUST WASHER 6MM	1			
14	90601-ZE1-000	WASHER, DRAIN PLUG	1			
15	90602-ZE1-000	CLIP, GOVERNOR HOLDER	1			
16	91202-KJ9-003	OIL SEAL 20X32X6	1			
17	94101-06800	PLAIN WASHER 6MM	2			
18	94251-08000	LOCK PIN 8MM	1			
19	94301-08200	KNOCK PIN 8X20	2			
21	91001-Z0D-V01	BEARING, RADIAL BALL	1			
23	11511-Z0D-V10	FLANGE JOINT, P. T. O.	1			
24	91231-891-003	OIL SEAL 6X11X4	1			
26	94303-06100	KNOCK PIN 6X10	2			
27	957010804500	FLANGE BOLT 8X45	4			
28	934021004000	BOLT-WASHER 10X40	2			
29	08C70-B0224M	SILICON SEALANT	1			

3. CRANK SHAFT



GX100U-KRB4 :MT-65H(FOR EXPORT)
 GX100U-KRBD :MT-63H(FOR EXPORT)

GX100U-KRB4/KRBD (FOR MT-65H/63H)

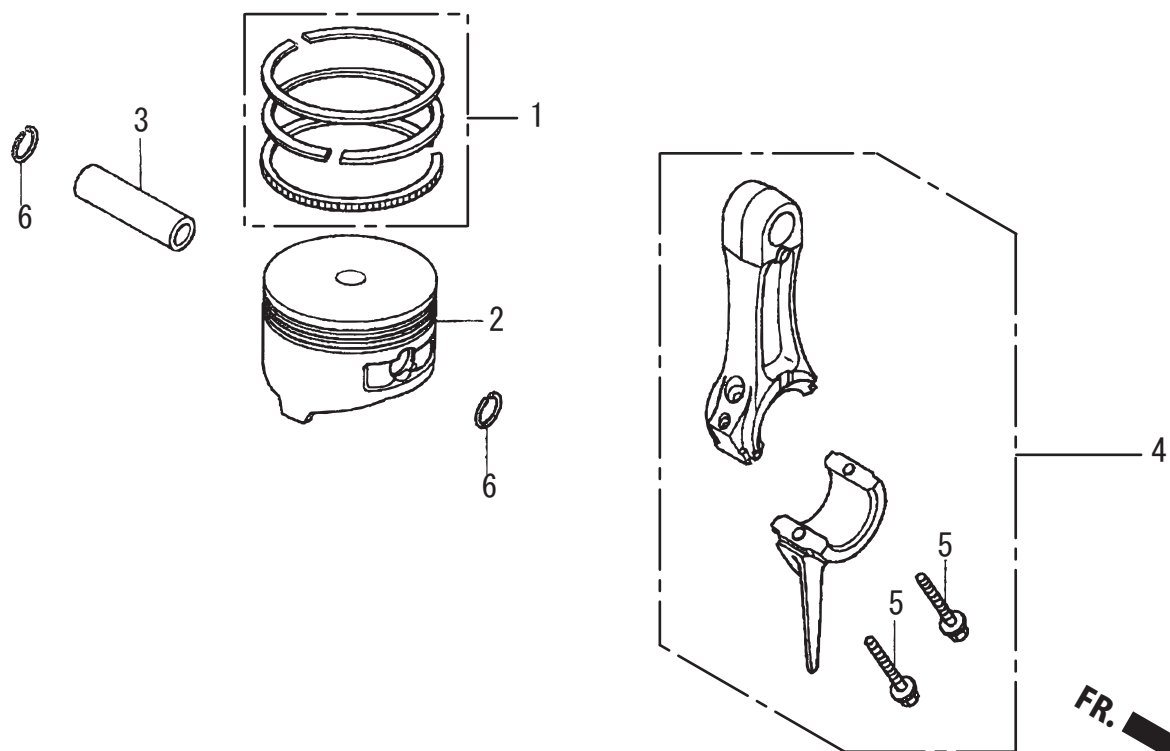
2012/4/2

3. CRANK SHAFT

** BAX **

REF NO.	PART NO.	PART NAME	Q' TY	MRK	MK2	REMARKS
6	91001-Z0D-V01	BEARING, RADIAL BALL	1			
9	13310-Z0D-V00	CRANK SHAFT COMP.	1			
10	94002-120000S	NUT M12	1			

4. PISTON, CONNECTING ROD



GX100U-KRB4 :MT-65H(FOR EXPORT)
 GX100U-KRBD :MT-63H(FOR EXPORT)

GX100U-KRB4/KRBD (FOR MT-65H/63H)

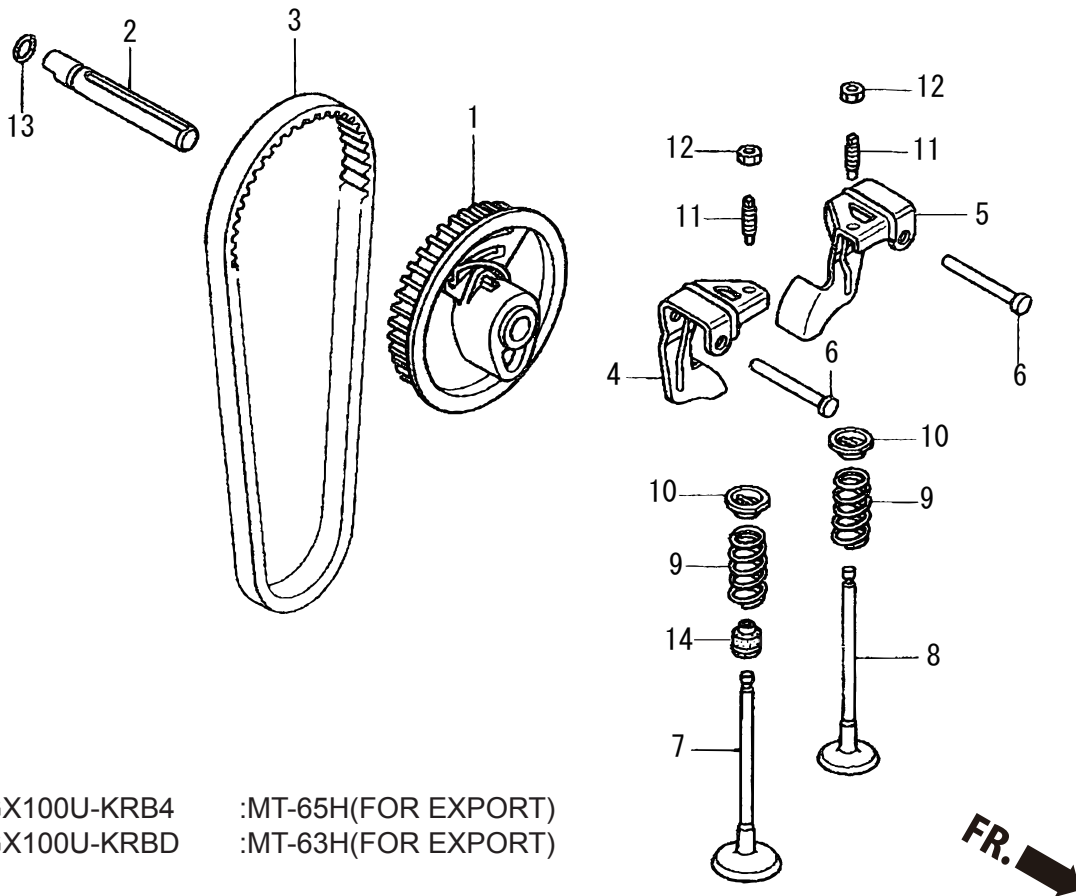
2012/4/2

4. PISTON, CONNECTING ROD

** BAY **

REF NO.	PART NO.	PART NAME	Q' TY	MRK	MK2	REMARKS
1	13010-Z0D-003	RING SET, PISTON	1			
2	13101-Z0D-000	PISTON	1			
3	13111-ZE0-000	PISTON PIN	1			
4	13200-Z0D-000	CONNECTING ROD ASSY.	1			
4	13200-Z0D-305	CONNECTING ROD AY (UNDER)	1			UNDER SIZE
5	90001-ZM7-000	CONNECTING ROD BOLT	2			
6	90551-ZE0-000	CLIP, PISTON PIN 13MM	2			

5. CAMSHAFT



GX100U-KRB4 :MT-65H(FOR EXPORT)
 GX100U-KRBD :MT-63H(FOR EXPORT)

GX100U-KRB4/KRBD (FOR MT-65H/63H)

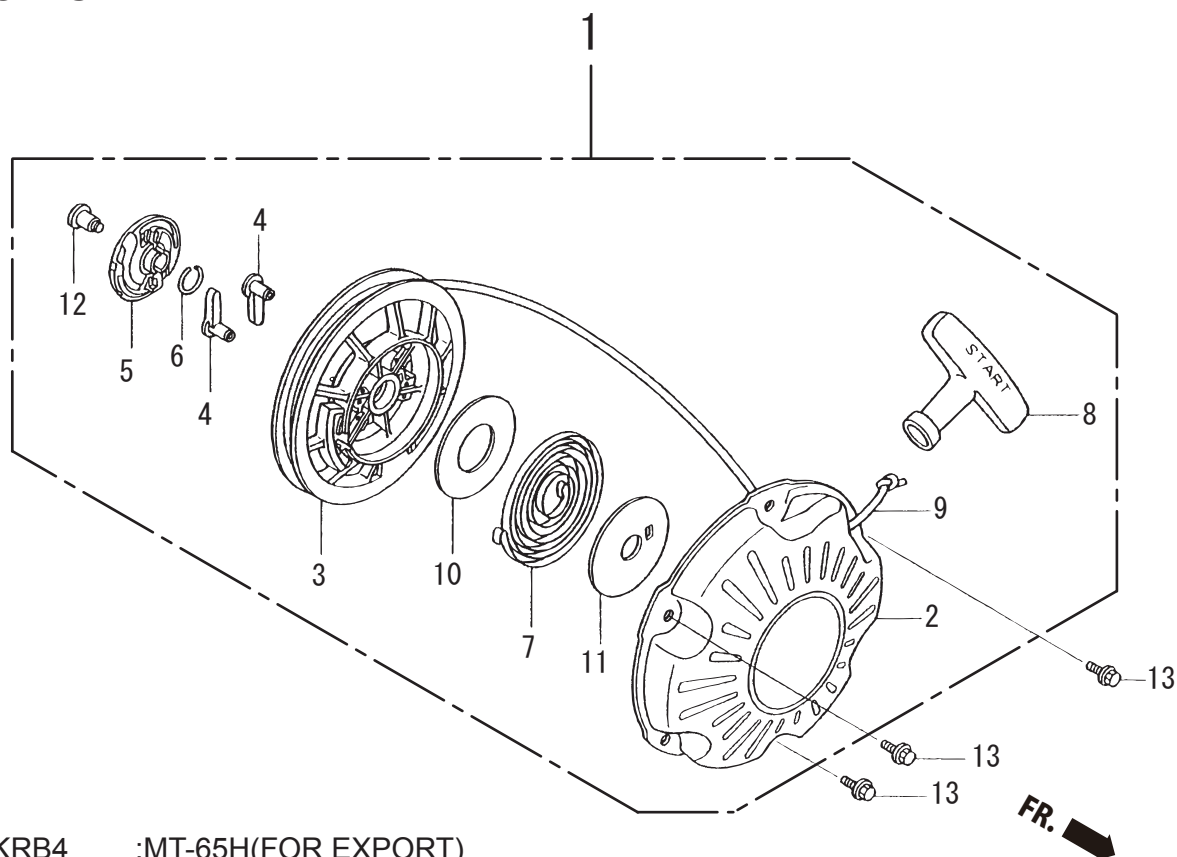
2012/4/2

5. CAMSHAFT

** BAZ **

REF NO.	PART NO.	PART NAME	Q' TY	MRK	MK2	REMARKS
1	14320-Z0D-010	PULLEY COMP. , CAMSHAFT	1			
2	14324-Z0D-000	SHAFT, CAM PULLEY	1			
3	14400-Z0D-003	TIMING BELT (61YU7 G-200)	1			
4	14431-Z0D-000	ROCKER ARM, INTAKE VALVE	1			
5	14441-Z0D-000	ROCKER ARM, EXHAUST VALVE	1			
6	14461-ZL8-000	SHAFT, ROCKER ARM	2			
7	14711-Z0D-000	INLET VALVE	1			
8	14721-Z0D-000	EXHAUST VALVE	1			
9	14751-Z0D-000	SPRING, VALVE	2			
10	14771-ZM3-010	RETAINER, VALVE SPRING	2			
11	90012-333-000	SCREW, . TAPPET ADJUSTING	2			
12	90206-001-000	NUT, . TAPPET ADJUSTING	2			
13	91301-ZM0-V31	O RING 6.8X1.9	1			
14	12209-KT7-013	SEAL, VALVE STEM	1			

6. RECOIL STARTER



GX100U-KRB4 :MT-65H(FOR EXPORT)
 GX100U-KRBD :MT-63H(FOR EXPORT)

GX100U-KRB4/KRBD (FOR MT-65H/63H)

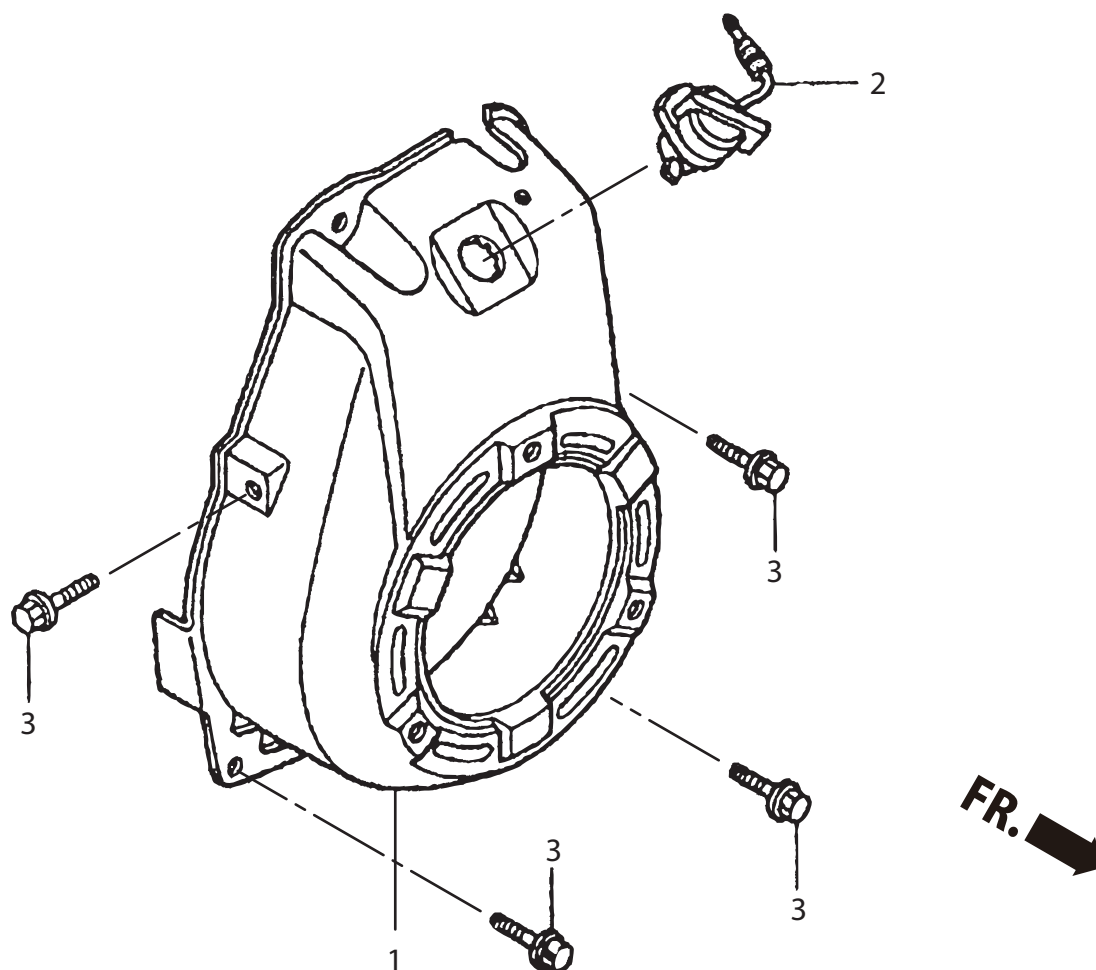
2012/4/2

5. CAMSHAFT

** BBA **

REF NO.	PART NO.	PART NAME	Q' TY	MRK	MK2	REMARKS
1	28400Z0DV04ZA	RECOIL STARTER AY/GX100	1			
2	28410Z0DV02ZA	CASE COMP/RECOIL *5-3-5(B	1			
3	28421-Z0D-V02	REEL, RECOIL STARTER	1			
4	28422-ZG0-W02	RATCHET, STARTER	1			
5	28433-ZG0-W02	GUIDE, RATCHET	1			
6	28441-ZW6-003	SPRING, FRICTION	1			
7	28442-ZH8-003	SPRING, RECOIL STARTER	1			
8	28461-ZH8-013	KNOB, STARTER	1			
9	28462-Z0D-V03	ROPE, RECOIL STARTER	1			
10	28467-Z0D-V02	PLATE, SIDE	1			
11	28468-Z0D-V02	PLATE, SLIDE	1			
12	90003-ZH8-003	SET SCREW	1			
13	95701-0600800	FLANGE BOLT 6X8	3			

7. FAN COVER



GX100U-KRB4 :MT-65H(FOR EXPORT)
 GX100U-KRBD :MT-63H(FOR EXPORT)

GX100U-KRB4/KRBD (FOR MT-65H/63H)

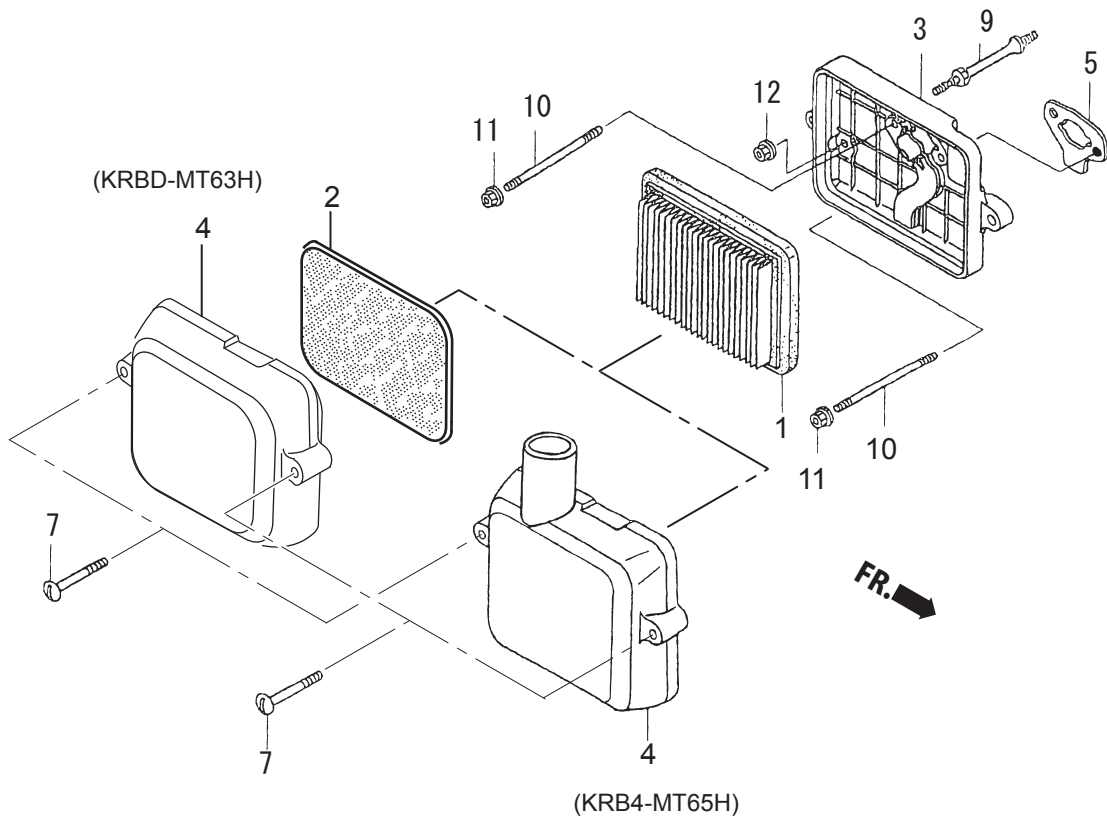
2012/4/2

6. RECOIL STARTER

** BBB **

REF NO.	PART NO.	PART NAME	Q' TY	MRK	MK2	REMARKS
1	19610Z0DV00ZB	FAN COVER CP. , BL/GX100	1			
2	35120-Z0D-V81	SWITCH ASSY, ENGINE STOP/U	1			
3	90014-952-000	VOLT, FLANGE 6X14(CT200)	4			

8. AIR CLEANER



GX100U-KRB4 :MT-65H(FOR EXPORT)
 GX100U-KRBD :MT-63H(FOR EXPORT)

GX100U-KRB4/KRBD (FOR MT-65H/63H)

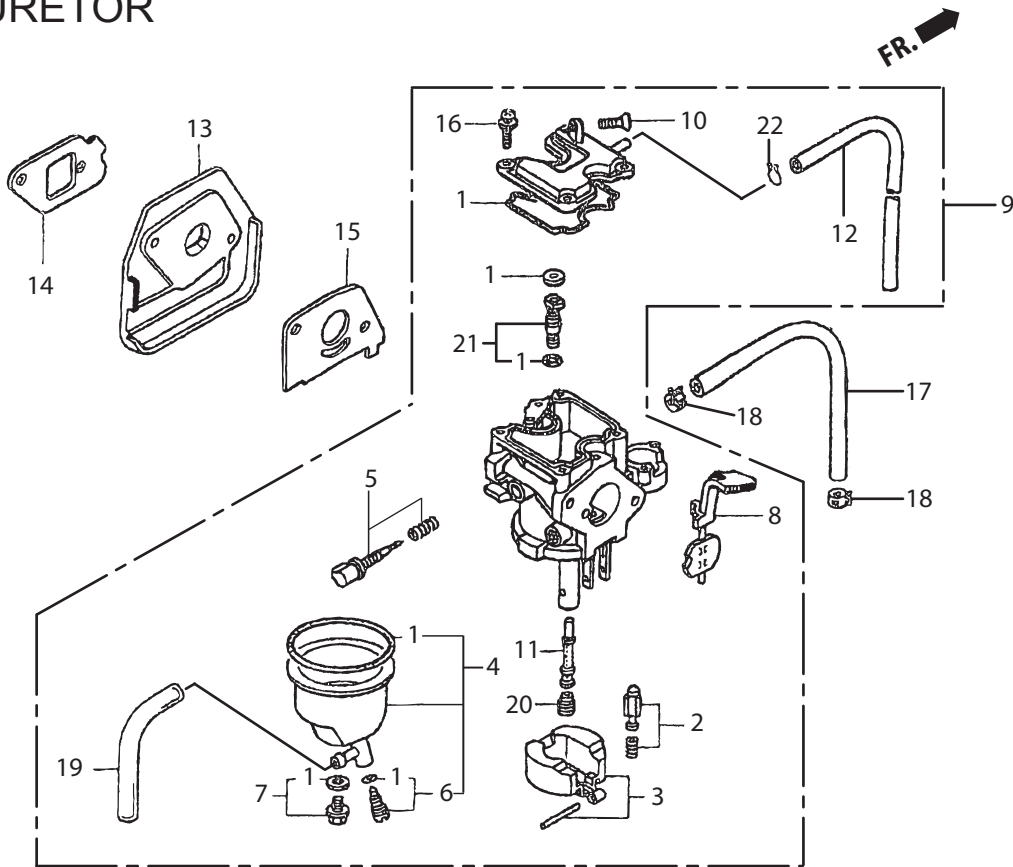
2012/4/2

8. AIR CLEANER

** BBD **

REF NO.	PART NO.	PART NAME	Q' TY	MRK	MK2	REMARKS
1	17211-ZL8-023	CLEANER, ELEMENT/GX100U	1			
2	17218-Z0D-000	CLEANER, ELEMENT/GX100KRBD	1			MT-63H (KRBD)
3	17220-Z0D-V20	CASE COMP., AIR CLEANER	1			
4	17231-Z0D-V62	COVER, AIR CLEANER/GX100	1			MT-65H (KRB4)
4	17231-Z0D-000	CAVER, AIR CLEANER/GX-KRBD	1			MT-63H (KRBD)
5	17228-Z0D-V21	PACKING, AIR CLEANER	1			
7	90011-Z0D-000	BOLT, AIR CLEANER COVER	2			
9	90041-Z0D-V20	STUD BOLT	1			
10	90042-Z0D-V20	STUD BOLT 5X75	2			
11	94050-05000	FLANGE NUT 5MM	2			
12	94050-06000	FLANGE NUT 6MM	1			

9. CARBURETOR



GX100U-KRB4 :MT-65H(FOR EXPORT)
 GX100U-KRBD :MT-63H(FOR EXPORT)

GX100U-KRB4/KRBD (FOR MT-65H/63H)

2012/4/2

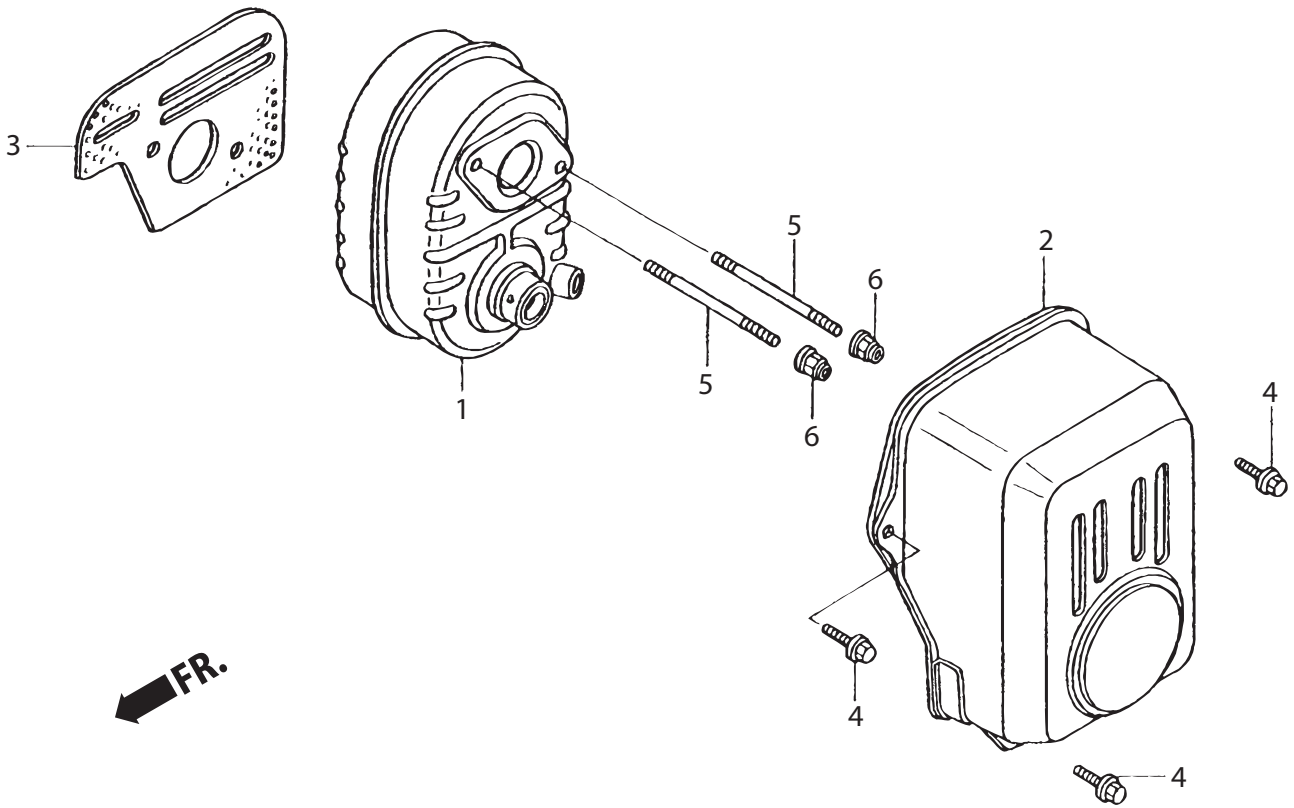
9. CARBURETOR

** BBC

**

REF NO.	PART NO.	PART NAME	Q' TY	MRK	MK2	REMARKS
1	16010-Z0D-V21	GASKET SET	1			
2	16011-ZE0-005	FLOAT VALVE SET	1			
3	16013-ZG0-811	FLOAT SET	1			
4	16015-Z0D-V21	FLOAT CHAMBER SET/BF33D B	1			
5	16016-Z0D-V21	SCREW SET	1			
6	16024-ZB9-005	DRAIN SCREW SET	1			
7	16028-ZW6-611	SCREW SET /GX100 /BF33D B	1			
8	16044-Z0D-V21	LEVER SET, CHOKE	1			
9	16100-Z0D-V23	CARBURETOR AY (BFD B)	1			
10	16124-ZE0-005	SCREW, THROTTLE STOP	1			
11	16166-Z0D-003	MAIN NOZZLE	1			
12	16199-Z0D-V21	TUBE, VENT	1			
13	16211-Z0D-000	INSULATOR, CARBURETOR	1			
14	16212-Z0D-V20	PACKING, INSULATOR	1			
15	16221-ZG0-801	PACKING, CARBURETOR	1			
16	938920401218	SCREW 4X12	1			
17	950014521050	FUEL HOSE 4.5X210 /GX100	1		!!950014500150M	
17	950014500150M	FUEL HOSE (1M)	1			
18	95002-4085008	CLAMP, TUBE	2			
19	950030501031	TUBE, VINYL 3.5X6.5X100	1			
20	99101ZG00600	MAIN JET #60	1			
21	99204-ZE00350	PILOT JET SET #35	1			
22	95002-02089	CLIP, TUBE (B8)	1			

10. MUFFLER



GX100U-KRB4 :MT-65H(FOR EXPORT)
 GX100U-KRBD :MT-63H(FOR EXPORT)

GX100U-KRB4/KRBD (FOR MT-65H/63H)

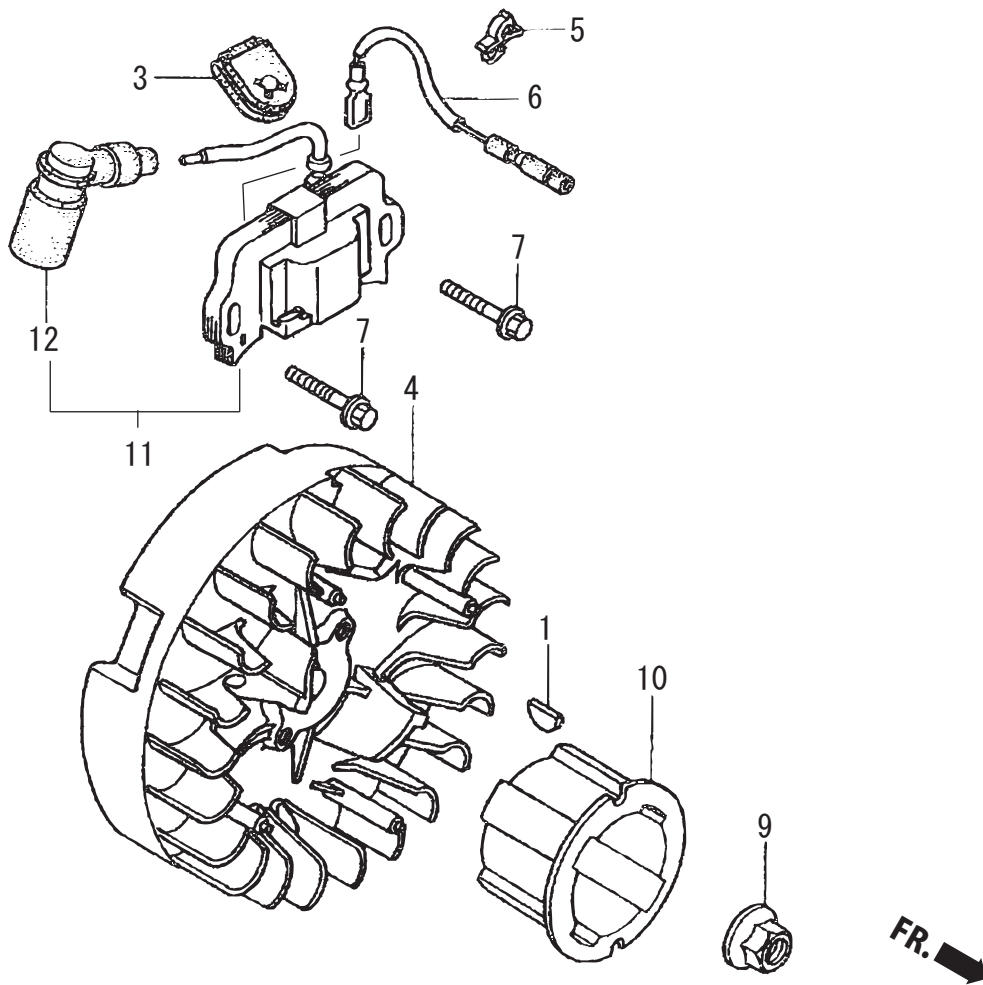
2012/4/2

10. MUFFLER

** BBE **

REF NO.	PART NO.	PART NAME	Q' TY	MRK	MK2	REMARKS
1	18310-Z0D-V20	MUFFLER COMP.	1			
2	18321-Z0D-V22	MUFFLER PROTECTOR	1			
3	18381-Z0D-000	GASKET, MUFFLER	1			
4	90014-952-000	VOLT, FLANGE 6X14(CT200)	3			
5	90048-Z0D-V00	STUD BOLT 6X78	2			
6	90343-ZE6-000	NUT, SELF-LOCK 6MM	2			

11. FLYWHEEL, IGNITION



GX100U-KRB4 :MT-65H(FOR EXPORT)
 GX100U-KRBD :MT-63H(FOR EXPORT)

GX100U-KRB4/KRBD (FOR MT-65H/63H)

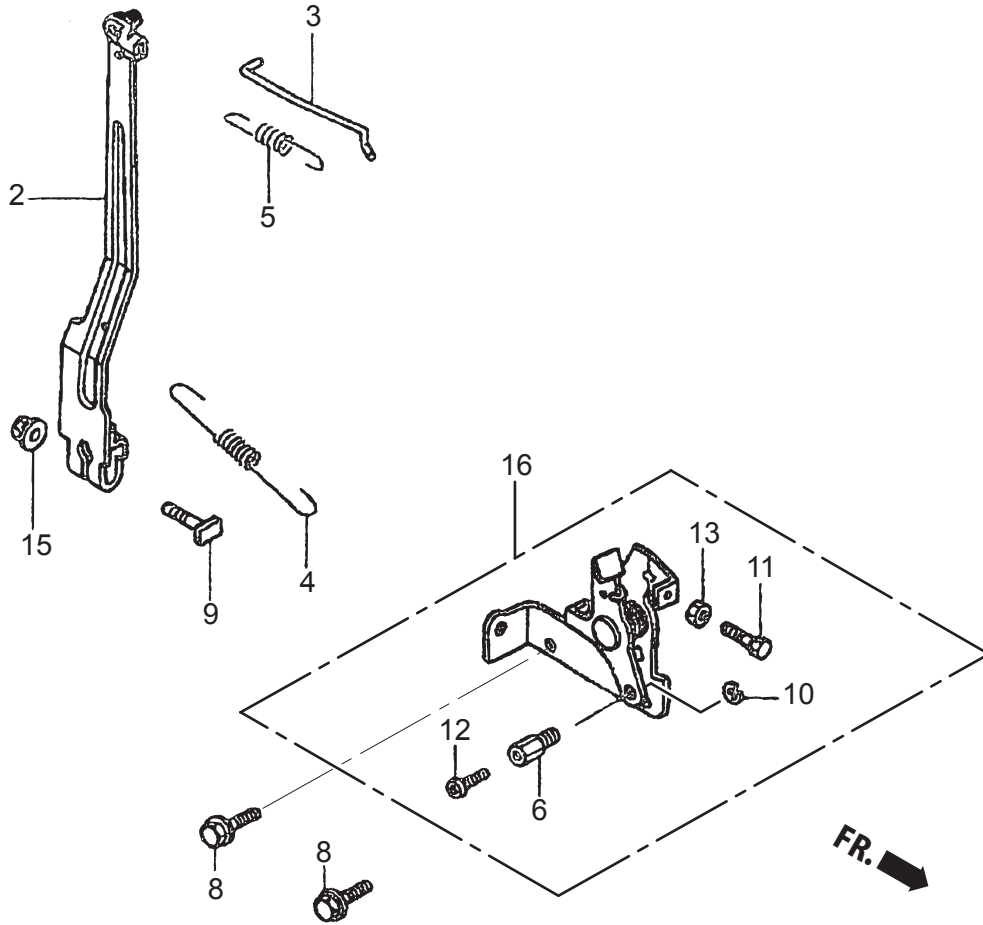
2012/4/2

11. FLYWHEEL, IGNITION

** BBF **

REF NO.	PART NO.	PART NAME	Q' TY	MRK	MK2	REMARKS
1	13331-ZM7-000	WOODRUFF KEY 25X18	1			
3	30564-ZA5-000	GROMMET, CORD	1			
4	31110-ZOD-003	FLYWHEEL COMP.	1			
5	30701-883-000	CLIP, HIGH TENSION CORD	1			
6	32195-ZOD-000	CORD, STOP SWITCH	1			
7	90022-888-010	FLANGE BOLT 6X20	2			
9	94050-12000	FLANGE NUT M12	1			
10	28451-ZOD-V03	STARTER PULLEY	1			
11	30500-ZOD-V02	IGNITION COIL ASSY/GX100	1			
12	30700-ZOD-V01	TERMINAL ASS'Y	1			

12. CONTROL



GX100U-KRB4 :MT-65H(FOR EXPORT)
 GX100U-KRBD :MT-63H(FOR EXPORT)

GX100U-KRB4/KRBD (FOR MT-65H/63H)

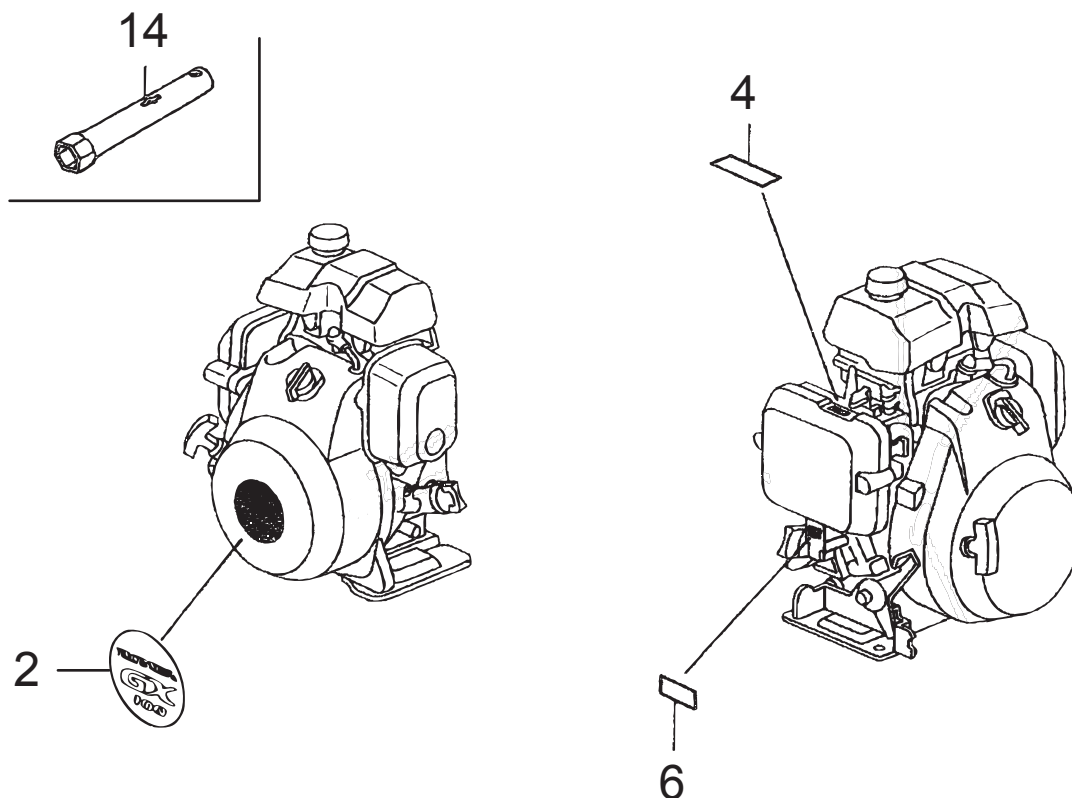
2012/4/2

12. CONTROL

** BBG **

REF NO.	PART NO.	PART NAME	Q' TY	MRK	MK2	REMARKS
2	16550-Z0D-V21	GOVERNOR ARM	1			
3	16555-Z0D-V20	GOVERNOR ROD	1			
4	16561-Z0D-V20	GOVERNOR SPRING	1			
5	16562-Z0D-V20	SPRING, THROTTLE	1			
6	16594-883-010	HOLDER, WIRE	1			
8	90014-952-000	VOLT, FLANGE 6X14 (CT200)	2			
9	90015-ZE5-010	BOLT, GOVERNOR ARM	1			
10	90605-230-000	CIR CLIP	1			
11	92301-050200A	BOLT 5X20	1			
12	93500040060H	SCREW 4X6	1			
13	94001-050000S	NUT M5	1			
15	94050-06000	FLANGE NUT 6MM	1			
16	16500-Z0D-V50	CONTROL ASSY /GX100 KRB1	1			

13. LABEL



GX100U-KRB4 :MT-65H(FOR EXPORT)
 GX100U-KRBD :MT-63H(FOR EXPORT)

GX100U-KRB4/KRBD (FOR MT-65H/63H)

2012/4/2

13. LABEL

** BBH **

REF NO.	PART NO.	PART NAME	Q' TY	MRK	MK2	REMARKS
2	87521-Z0D-V02	LABEL, EMBLEM GX100	1			
4	87528-Z0D-000	MARK, CHOKE	1			
6	87601-Z0D-U10	MARK, TYPE (KRB4)	1			MT-65H (KRB4)
6	87601-Z0D-U80	MARK, TYPE (KRBD) /MT-63H	1			MT-63H (KRBD)
14	89216-130-690	WRENCH, SPARK PLUG	1			

PARTS REMARK INDEX

How to read the marks and remarks used in this parts book.

Section 1 : Explanation of Code Use In "MRK" Column

OO : Interchangeable between the new part and the old one.

XX : Not Interchangeable between new and old.

OX : New part is usable for the old machine but the old part is not usable for the new machine.

XO : The old part is usable for the new machine but the new part is not usable for the old machine.

Note : In case of the lack of interchangeability between the new part and old part, a new part may be used by replacing all other parts found in the assembly. In this case, refer to section 2 for instruction on identifying other parts involved in a new assembly.

AD : Newly established(added)

DC : Suspended(discontinued)

NC : Part number changed

QC : Quantity used has been changed

NS : Not supplied individually but supplied in an assembly or a group.

AS : Special part designed to allow interchangeability between new and old part.

CR : Correction

Section 2 : Items Found In "Remark" Column

Serial Numbers - Where indicated, this indicates a serial number range (inclusive) where a particular part is used.

Model Number - Where indicated, this shows that the corresponding part is utilized only with this specific model number or model number variant.

or * : All parts with the same number following # or * belong to the same assembly. this part cannot be interchanged individually with any other assemblies to replace an old part (indicated by #), with a new part(indicated by *), then all other parts of that assembly must be replaced with new ones.

Note : If more than one of the same reference number is listed, the last one listed indicates newest(or latest)part available.

Section 3: Example

REF NO.	PART NO.	PART NAME	QTY	MRK	REMARKS
457(1)	5122-09230	Hinge Metal, Upper/24g	1		-1070 #3 (5)
457(2)	5072-09420	Hinge Metal, Upper M16	1	OX(3)	U1071-(6) * 3(7)

(1) Old part

(2) New part

(3) New part usable with old machine, but old part not usable with new machine (reference section 1).

(4) Old part number is used through this machine serial number.

(5) Old part, used in an assembly with other parts marked with #3. To use this part on a new machine, all other parts in this assembly must be replaced with old ones.

(6) New part put into use starting with this serial number and is still current.

(7) New part used in an assembly with other parts marked * 3, to use this part as a replacement for an old part, all other * 3 marked parts must be changed at the same time.

Section 4: Items Found In "MK2" Column

(only for suspended products)

! OO ("OO" is shown in figure) : The part shown in lower line is supplied.

! SD : Not available due to termination of production.

! NS : Not supplied individually, but supplied in an assembly or a group.

! PD : Supplied as unit product.

SS : Not available after stock run out.

(The contents of this parts catalog are subject to change without notice.)



MIKASA SANGYO CO.,LTD.

HEAD OFFICE

NO. 4-3. 1-CHOME, SARUGAKU-CHO, CHIYODA-KU
TOKYO, JAPAN