



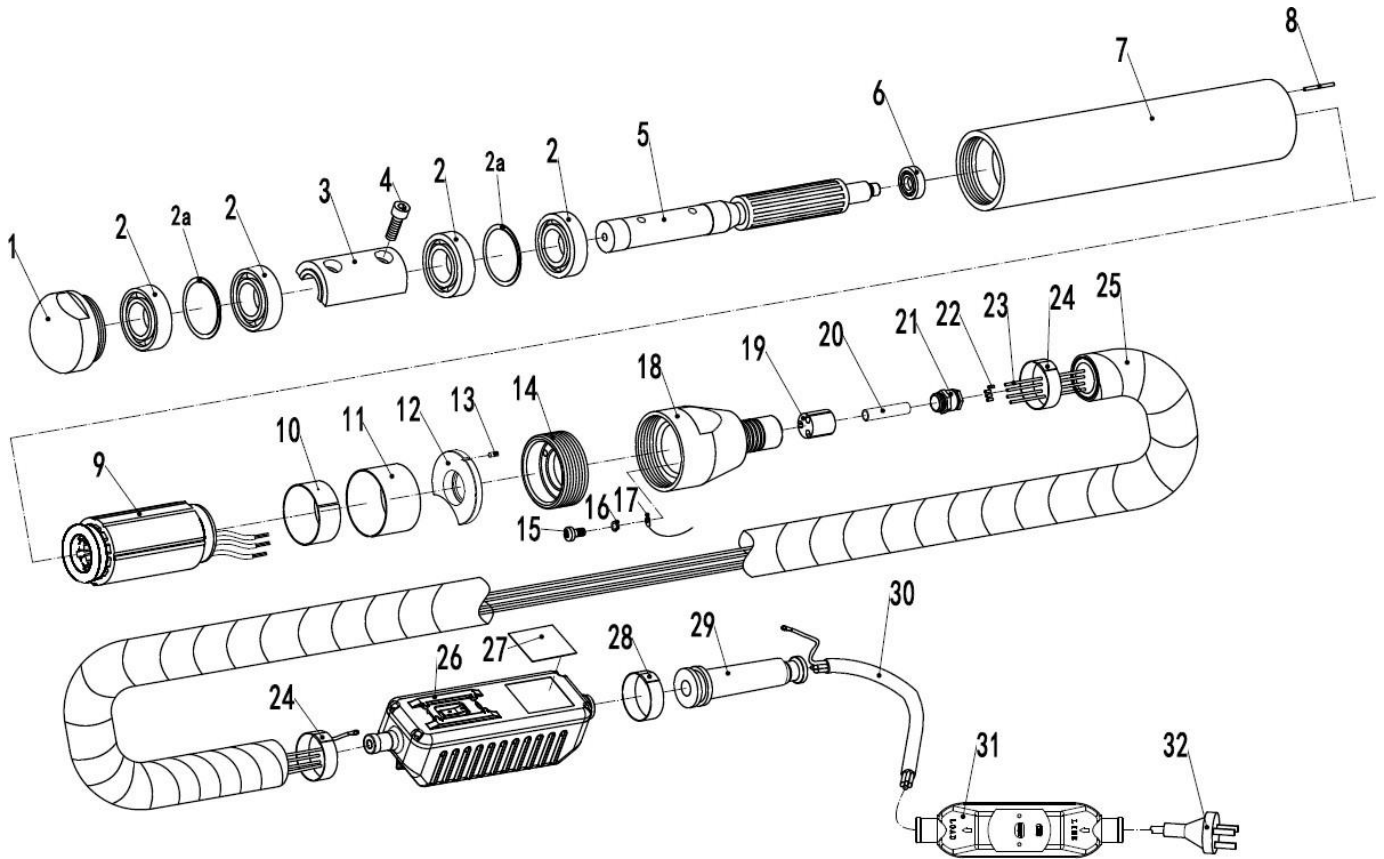
SPARE PARTS MANUAL

FLEXTOOL POWERVIBE® FPV-45, FPV-60



Version 3.0 (October 2023)

FOR MORE INFORMATION VISIT flextool.com.au



Flextool PowerVibe (All Models)

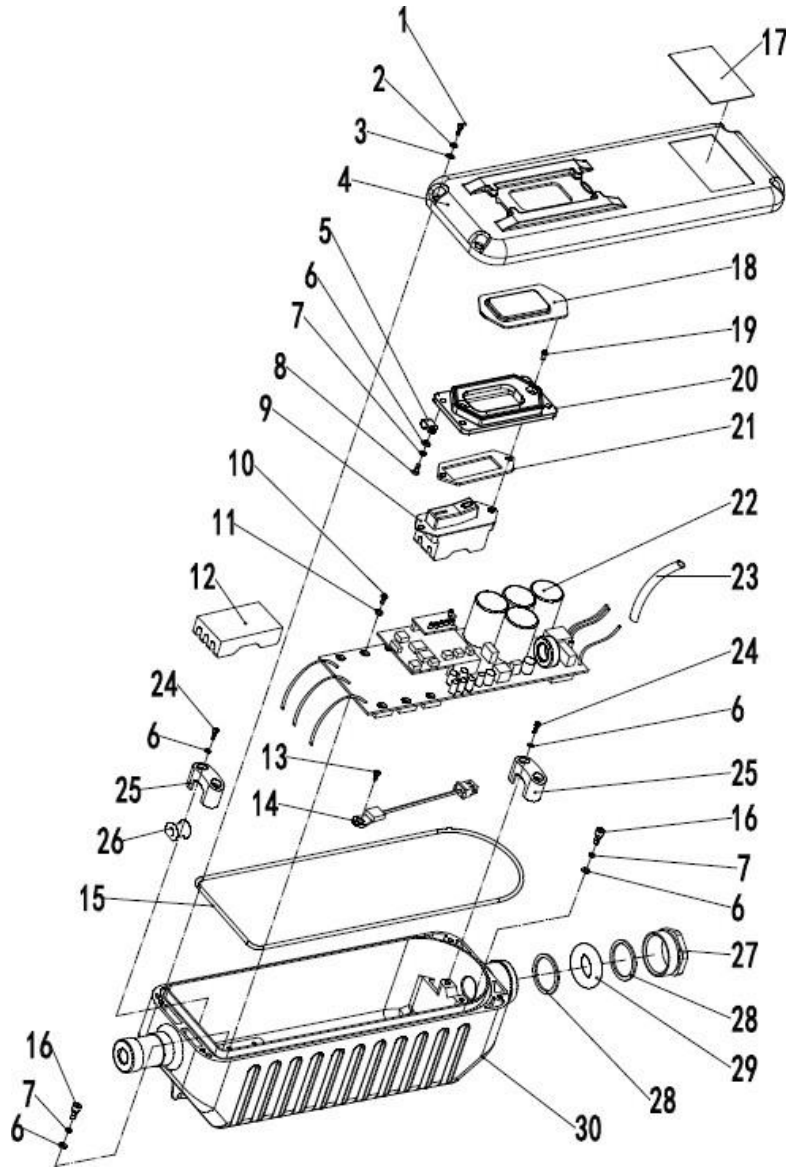
Item No.	Product Code	Description	Qty	Remarks
1	See Remarks	FLX NOSE CAP STEEL FPV45 (251001)	1	Use AS-1
	See Remarks	FLX NOSE CAP STEEL FPV60 (253001)	1	Use AS-2
2	See Remarks	FLX BEARING 6202-2Z/C3 FPV45 (550507)	2	Use AS-1
	See Remarks	FLX BEARING 6204-2Z/C3 FPV60 (550501)	4	Use AS-2
2A	See Remarks	FLX WASHER FPV60 (253001)	2	Use AS-2 (FPV60 Only)
3	See Remarks	FLX ECCENTRIC WEIGHT FPV45 (251002)	1	Use AS-1
	See Remarks	FLX ECCENTRIC WEIGHT FPV60 (253002)	1	Use AS-2
4	See Remarks	FLX BOLT M6 X 16MM FPV45 (630425)	2	Use AS-1
	See Remarks	FLX BOLT M8 X 20MM FPV60 (630422)	2	Use AS-2
5	See Remarks	FLX ROTATOR FPV45 (251100)	1	Use AS-1
	See Remarks	FLX ROTATOR FPV60 (253100)	1	Use AS-2
6	See Remarks	FLX BEARING 609-ZE/C3 FPV45 (550531)	1	Use AS-1
	See Remarks	FLX BEARING 6000-ZE/C3 FPV60 (550506)	1	Use AS-2
7	See Remarks	FLX BARREL FPV45 (251003)	1	Use AS-1
	See Remarks	FLX BARREL FPV60 (253003)	1	Use AS-2
8	See Remarks	FLX POSITION PIN (714002)	1	Use AS-1 or AS-2
9	See Remarks	FLX STATOR FPV45 (251210)	1	Use AS-1
	See Remarks	FLX STATOR FPV60 (253210)	1	Use AS-2
10	See Remarks	FLX INSULATION (255106)	1	Use AS-1 or AS-2
11	See Remarks	FLX SPACER FPV45 (251005)	1	Use AS-1
	See Remarks	FLX SPACER FPV60 (253005)	1	Use AS-2
12	See Remarks	FLX BEARING HOLDER FPV45 (251006)	1	Use AS-1
	See Remarks	FLX BEARING HOLDER FPV60 (253006)	1	Use AS-2
13	See Remarks	FLX PIN (252007)	1	Use AS-1 or AS-2
14	See Remarks	FLX THREADED ADAPTOR FPV45 (251008)	1	Use AS-1
	See Remarks	FLX THREADED ADAPTOR FPV60 (253008)	1	Use AS-2
15	See Remarks	FLX SCREW M5 X 6MM (590704)	1	Use AS-1 or AS-2
16	See Remarks	FLX SPRING WASHER 5MM (650501)	1	Use AS-1 or AS-2

Flextool PowerVibe (All Models) Continued

17	See Remarks	FLX GROUND WIRE (255017)	1	Use AS-1 or AS-2
18	See Remarks	FLX BARREL END ADAPTOR FPV45 (251009)	1	Use AS-1
	See Remarks	FLX BARREL END ADAPTOR FPV60 (253009)	1	Use AS-2
19	See Remarks	FLX RUBBER ISOLATOR (252010)	1	Use AS-1 or AS-2
20	See Remarks	FLX INSULATION TUBE 6MM FPV45 (430214)	1	Use AS-1
	See Remarks	FLX INSULATION TUBE 7MM FPV60 (430209)	1	Use AS-2
21	See Remarks	FLX CABLE GLAND MG16 X 1.5MM (570231)	1	Use AS-1 or AS-2
22	See Remarks	FLX WIRING TERMINALS (712102)	4	Use AS-3
23	See Remarks	FLX WIRING 6M (430812)	1	Use AS-3
24	NPS01077-UNIT	FLX BAND-IT COLLAR LARGE (712201)	2	
25	NPS01083-UNIT	FLX FLEXSHAFT CASING 6M (830303)	1	
26	See Remarks	FLX INVERTER SWITCH BOX ASSY FPV45 (756221CF)	1	Use AS-4
	See Remarks	FLX INVERTER SWITCH BOX ASSY FPV60 (756321CF)	1	Use AS-5
27	See Remarks	FLX SERIAL NUMBER PLATE FVP45 (756139F)	1	Use AS-4
	See Remarks	FLX SERIAL NUMBER PLATE FVP60 (756141F)	1	Use AS-5
28	NPS01076-UNIT	FLX BAND-IT COLLAR SMALL (712202)	1	
29	NPS01078-UNIT	FLX CABLE PROTECTION SLEEVE (750125)	1	
30	See Remarks	FLX POWER CABLE 10M (252020)	1	Use AS-6
31	See Remarks	FLX RCD PROTECTION (115802)	1	Use AS-6
32	See Remarks	FLX CABLE & PLUG AU TYPE (253024)	1	Use AS-6

Assembly / Service Kits

Item No.	Product Code	Description	Qty	Remarks
AS-1	NPS01084-UNIT	FLX POWERVIBE HEAD AND CABLE ASSY FPV45 (251120H)	1	Inc Items: 1-21 (Suits FPV45)
AS-2	NPS01085-UNIT	FLX POWERVIBE HEAD AND CABLE ASSY FPV60 (253120H)	1	Inc Items: 1-21 (Suits FPV60)
AS-3	NPS01081-UNIT	FLX WIRING LOOM FPV45 (430808F)	1	Inc Items: 22 & 23
AS-4	NPS01086-UNIT	FLX INVERTER SWITCH BOX ASSY FPV45 (756220CF)	1	Inc Items: 26 & 27 (Suits FPV45)
AS-5	NPS01087-UNIT	FLX INVERTER SWITCH BOX ASSY FPV60 (756320CF)	1	Inc Items: 26 & 27 (Suits FPV60)
AS-6	NPS01082-UNIT	FLX CABLE ASSY RCD & PLUG 10M (252020F)	1	Inc Items: 30-32



Flextool PowerVibe Inverter Switch Box (All Models)

Item No.	Product Code	Description	Qty	Remarks
1	See Remarks	FLX SCREW M5 X 16MM (630402)	4	Use AS-1 or AS-2 or SK-2
2	See Remarks	FLX SPRING WASHER 5MM (650501)	4	Use AS-1 or AS-2 or SK-2
3	See Remarks	FLX FLAT WASHER 5MM (650102)	4	Use AS-1 or AS-2 or SK-2
4	See Remarks	FLX BOX COVER (756131)	1	Use AS-1 or AS-2 or SK-2
5	See Remarks	FLX WIRE CLIP (756227)	1	Use AS-1 or AS-2 or SK-2
6	See Remarks	FLX FLAT WASHER 4MM (650101)	10	Use AS-1 or AS-2 or SK-2
7	See Remarks	FLX SPRING WASHER 4MM (650505)	6	Use AS-1 or AS-2 or SK-2
8	See Remarks	FLX SCREW M4 X 12MM (630717)	4	Use AS-1 or AS-2 or SK-2
9	See Remarks	FLX SWITCH (756134)	1	Use AS-1 or AS-2 or SK-1
10	See Remarks	FLX SCREW M3 X 10MM (630723)	6	Use AS-1 or AS-2
11	See Remarks	FLX FLAT WASHER 3MM (650106)	6	Use AS-1 or AS-2
12	See Remarks	FLX WIRING CONNECTOR (570391)	1	Use AS-1 or AS-2 or SK-2
13	See Remarks	FLX SCREW M3 X 5MM (630737)	1	Use AS-1 or AS-2
14	See Remarks	FLX THERMAL SENSOR (570385)	1	Use AS-1 or AS-2
15	See Remarks	FLX O-RING 190MM X 3MM (510430)	1	Use AS-1 or AS-2 or SK-2
16	See Remarks	FLX SCREW M4 X 10MM (630424)	2	Use AS-1 or AS-2 or SK-2
17	See Remarks	FLX SERIAL NUMBER PLATE FVP45 (756139F)	1	Use AS-1
	See Remarks	FLX SERIAL NUMBER PLATE FVP60 (756141F)	1	Use AS-2
18	NPS01075-UNIT	FLX RUBBER BOOT (756126)	1	

Flextool PowerVibe Inverter Switch Box (All Models) Continued

19	See Remarks	FLX SCREW M4 X 12MM (633519)	2	Use AS-1 or AS-2 or SK-1
20	See Remarks	FLX SWITCH SUPPORT BRACKET (756135)	1	Use AS-1 or AS-2 or SK-1
21	See Remarks	FLX GASKET (756136)	1	Use AS-1 or AS-2 or SK-1
22	See Remarks	FLX POWERVIBE IC PLATE FPV45 (756144)	1	Use AS-1
	See Remarks	FLX POWERVIBE IC PLATE FPV60 (756145)	1	Use AS-2
23	See Remarks	FLX INSULATED TUBE (430214)	1	Use AS-1 or AS-2 or SK-2
24	See Remarks	FLX SCREW M4 X 12MM (630426)	4	Use AS-1 or AS-2 or SK-2
25	See Remarks	FLX CABLE CLAMP (756115)	2	Use AS-1 or AS-2 or SK-2
26	See Remarks	FLX LEAD PROTECTOR (750103)	1	Use AS-1 or AS-2 or SK-2
27	See Remarks	FLX GLAND NUT (756105)	1	Use AS-1 or AS-2 or SK-2
28	See Remarks	FLX WASHER (756104)	2	Use AS-1 or AS-2 or SK-2
29	See Remarks	FLX RUBBER BUSH (510104)	1	Use AS-1 or AS-2 or SK-2
30	See Remarks	FLX BOX HOUSING (756138)	1	Use AS-1 or AS-2

Assembly / Service Kits

Item No.	Product Code	Description	Qty	Remarks
AS-1	NPS01086-UNIT	FLX INVERTER SWITCH BOX ASSY FPV45 (756220CF)	1	Inc Items: 1-30 (Suits FPV45)
AS-2	NPS01087-UNIT	FLX INVERTER SWITCH BOX ASSY FPV60 (756320CF)	1	Inc Items: 1-30 (Suits FPV60)

SK-1	NPS01080-UNIT	FLX POWERVIBE SWITCH KIT (756134SK)	1	Inc Items: 9, 19-21
SK-2	NPS01079-UNIT	FLX POWERVIBE INVERTER SERVICE KIT (756222SK)	1	Inc Items: 1-3, 5-8, 12, 15, 16, 23-29



Flextool

1956 Dandenong Road, Clayton VIC 3168, Australia

Phone (AUS): 1300 353 986

flextool.com.au

ABN 80 069 961 968

This manual summarises our best knowledge of the product based on the information available at the time of publication. You should read this manual carefully and consider the information in the context of how the product will be used. Our responsibility for products sold is subject to our standard terms and conditions of sale.

DISCLAIMER:

Any advice, recommendation, information, assistance or service provided by us in this manual is given in good faith and is believed by us to be appropriate and reliable. However, any advice, recommendation, information, assistance or service provided by us is provided without liability or responsibility PROVIDED THAT the foregoing shall not exclude, limit, restrict or modify the right entitlements and remedies conferred upon any person or the liabilities imposed upon us by any condition or warranty implied by Commonwealth, State or Territory Act or ordinance void or prohibiting such exclusion limitation or modification. The product can be expected to perform as indicated in this manual so long as operation and operational procedures of the individual products are followed as recommended in this manual.

Design and technical specifications may be subject to changes.

© This publication is copyright. All rights are reserved. Flextool and PowerVibe are registered trade marks of Parchem Construction Supplies Pty Ltd.