

# ***GENERAL PURPOSE ENGINE***

GX35T

**PARTS CATALOGUE**

**2**



GX35T

---

FOREWORD INDEX

**1**

---

ENGINE GROUP

**2**

---

PART NUMBER INDEX

**3**

---

PART NAME INDEX

**4**

---



**Instruction for use of parts catalogue**

- **This parts catalogue was prepared based on the latest information available as of October 10, 2011.**
- See the parts catalogue news for any revision that is made after October 10, 2011.
- **Always specify the part number when ordering a part.**
- Check the model, type, serial numbers, color, maker, and the size as needed before ordering a part.
- Note that the illustrations (part drawings) can differ from the actual parts in shape. They are given just to help you to refer to the parts.
- **When modifications or additions to this parts catalogue are made, a revised edition will be issued at an appropriate time, with successively progressing revision numbers on the cover. We recommend obtaining such revisions in order to keep your parts catalogue up-to-date at all times. To check whether a parts catalogue revision has been issued, please contact your Honda distributor.**

Initial version issue date **September 20, 2005**  
**Honda Motor Co., Ltd.**

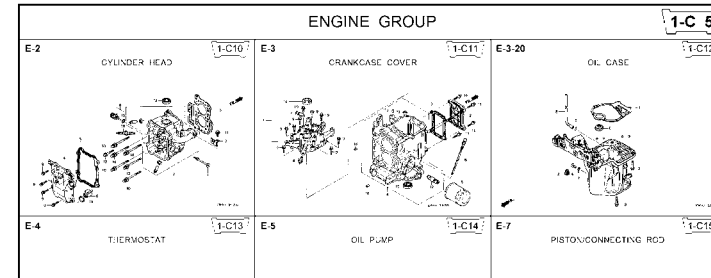
**CONTENTS**

	Page	Address No.	
● Instruction for use of parts catalogue .....	1	B 1	<b>1</b>
● How to refer to the part information .....	2	B 2	
● Part catalogue structure .....	3	B 3	
● When the parts were revised.....	4	B 4	
● Abbreviations used in the parts catalogue.....	4	B 4	
● How to check the part block and serial numbers.....	5	B 5	
● Models, parts catalogue codes and applicable serial numbers .....	6	B 6	
● Features of each type.....	8	B 8	
● Fuel hose, general purpose hoses and vinyl hose.....	9	B 9	
● FLAT RATE SERVICE TIME .....	10	B10	
● Illustrated index .....	15	B15	
● ENGINE GROUP.....	17	C 1	<b>2</b>
● PART NO. INDEX.....	34	E 1	<b>3</b>
● PART NAME INDEX.....	36	F 1	<b>4</b>



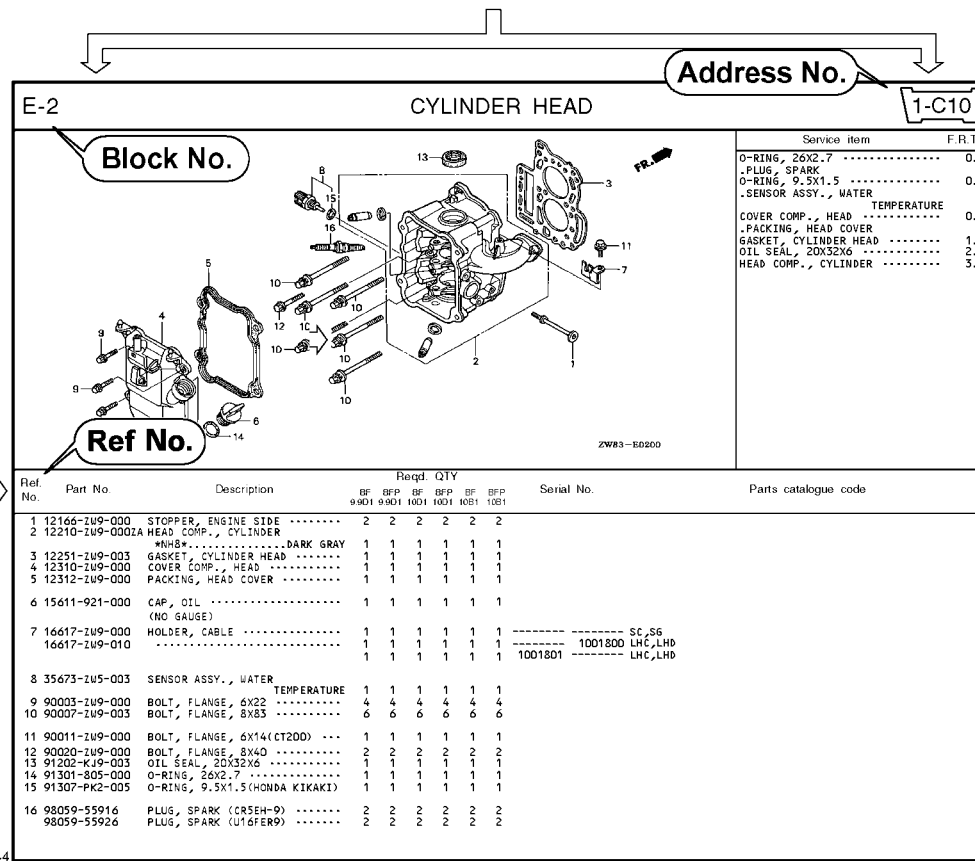
How to refer to the part information

A Reference with "Illustrated index"



B Reference with "Part number index"

PART NO. INDEX					
Part Number	Address	Page	Ref.	Part Number	Address Page
06000				15212-ZW9-000	1-C14 3C
06316-ZW9-000	1-69	88	1	15220-ZW9-003	1-C14 3C
11000				15332-ZW9-000	1-E8 55
11300-ZW9-405	1-C11	27	1	15332-ZW9-A30	1-E11 5E
11300-ZW9-406	1-C11	27	1	15400-PFB-004	1-C11 27
11340-ZW9-000	1-C11	27	2	15422-ZW9-000	1-C14 3C
11342-ZW9-000	1-C11	27	3	15473-881-000	1-C14 3C
11381-ZW9-003	1-C12	28	1	15474-ZW9-000	1-C14 3C
				15611-921-000	1-C10 2E
				15655-ZW9-000	1-C11 27
				16000	
12000				16010-ZV4-005	1-D4 3E
12000-ZW9-405ZA	1-C11	27	4	16011-ZV4-005	1-D4 3E
12155-ZV4-A00	1-C13	29	1	16013-ZW9-003	1-D4 3E
12166-ZW9-000	1-C10	26	1	16016-ZW9-003	1-D4 3E
12209-GB4-681	1-C16	32	1	16016-ZW9-721	1-D4 3E
12210-ZW9-405ZA	1-C10	26	2	16023-ZW9-003	1-D4 3E
12216-ZE2-300	1-E8	55	1	16024-ZV4-650	1-D4 3E
	1-E11	58	1	16028-ZV4-650	1-D4 3E



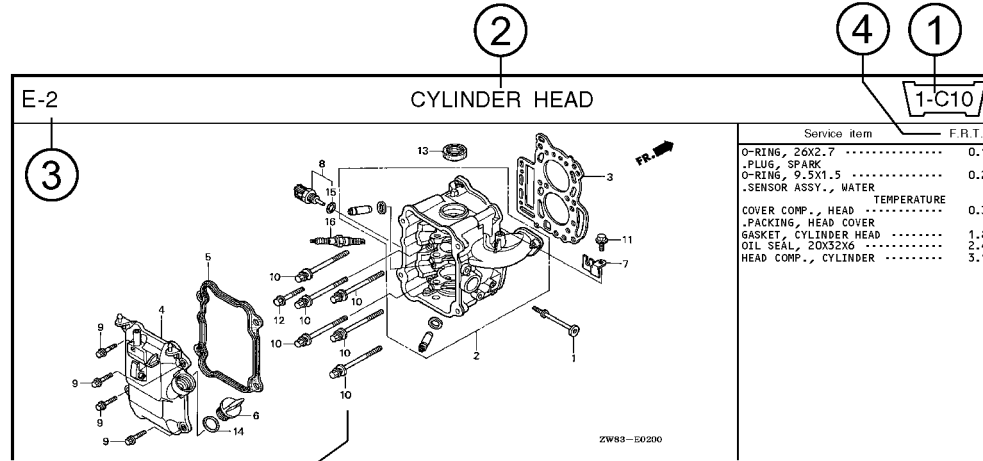
C Reference with "Part name index"

PART NAME INDEX					
Part name	Address	Page	Ref.		
[ A ]				BOLT,	
ABSORBER , FUEL	1-E15	62	5	BOLT,	
ARMATURE COMP.	1-D11	43	7	BOLT,	
ARM COMP. , LINK JOINT	1-G6	85	18	BOLT,	
ARM COMP. , SHIFT LINK	1-G6	85	14	BOLT,	
ARM COMP. , TILT	1-F15	79	20		
ARM , FUEL PUMP ROCKER	1-C16	32	4		
ARM , REVERSE LOCK	1-F15	79	18		
ARM , SHIFT LINK	1-F11	74	7		
ARM , STOPPER	1-D1	33	12	BOLT,	
ARM , THROTTLE REMOTE	1-F11	74	6		
ARM , VALVE ROCKER	1-C16	32	3		
[ B ]					
BAG , TOOL , 160MM	1-G5	84	10		
BAND	1-G6	86	37		
BAND B1 , WIRE	1-F6	69	1		
BAND , CORD	1-F3	67	18	BOLT,	
BAND , TUBE CLIP , 11MM	1-E15	63	20		
BAND , TUBE CLIP , 12.5MM	1-E15	63	19	BOLT,	

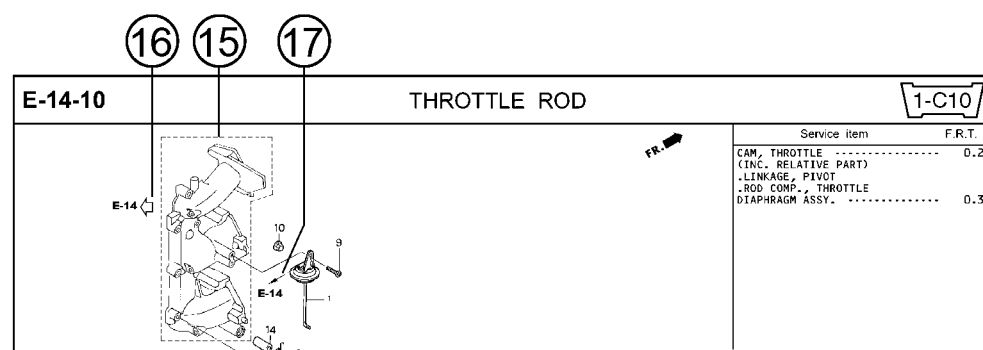
Page No.

2000.09.20 E

**Part catalogue structure**



Ref. No.	Part No.	Description	Reqd. QTY						Serial No.	Parts catalogue code
			BF 9/9D1	BFP 9/9D1	BF 10D1	BFP 10D1	BF 10B1	BFP 10B1		
1	12166-zw9-000	STOPPER, ENGINE SIDE	2	2	2	2	2	2		
2	12210-zw9-000ZA	HEAD COMP., CYLINDER *NHS* ..... DARK GRAY	1	1	1	1	1	1		
3	12251-zw9-003	GASKET, CYLINDER HEAD	1	1	1	1	1	1		
4	12310-zw9-000	COVER COMP., HEAD	1	1	1	1	1	1		
5	12312-zw9-000	PACKING, HEAD COVER	1	1	1	1	1	1		
6	15611-921-000	CAP, OIL (NO GAUGE)	1	1	1	1	1	1		
7	16617-zw9-000	HOLDER, CABLE	1	1	1	1	1	1	SC,SG	
	16617-zw9-010		1	1	1	1	1	1	1001800 LHC,LHD	



① **Address number**  
• Address No. is provided (in place of the page No.) to help you refer to the part with the part No. or part name.

② **Block title** ③ **Block number**

④ **Service item/Flat rate time**

⑤ **Reference number**  
• Title number marked with the parenthesis or parentheses indicates that it continues from the previous page.

⑥ **Part number** ⑦ **Honda color code**

⑧ **Description**

⑨ **Assemblies**

• Sections framed with broken lines in the exploded view drawings are available as complete assemblies. (Their individual parts can also be obtained.)

⑩ **Color description**

⑪ **Note**

• Notes are shown with the parentheses in the part name column.

⑫ **Required quantity**

• Required QTY shown in the parenthesis or parentheses indicates the optional part.  
• Required QTY marked with "N" Indicates the optional part that should be selected as needed.  
• Required QTY indicates the number of the part used in the block.

⑬ **Serial number**

⑭ **Type**

• When the type column is blank, it indicates that the part is applicable to all types.  
• As the type of the actual unit may differ from the "parts catalogue, type" please refer to "Models, types and applicable serial numbers" for confirmation.

⑮   
• Parts enclosed within a dotted line are covered in a different block.

⑯   
• A hollow arrow indicates the block No. for the parts enclosed within a dotted line .

⑰   
• A solid arrow indicates the block No. the part in question is connected to.

When the parts were revised

Abbreviations used in the parts catalogue

1



Be sure to check the serial number!!



Ref. No.	Part No.	Description	Reqd. QTY						Serial No.
			BF 99D1	BFP 9.9D1	BF 10D1	BFP 10D1	BF 10B1	BFP 10B1	
1	12166-ZW9-000	STOPPER, ENGINE SIDE .....	2	2	2	2	2	2	
2	12210-ZW9-000ZA	HEAD COMP., CYLINDER *NHS*.....DARK GRAY	1	1	1	1	1	1	
3	12251-ZW9-003	GASKET, CYLINDER HEAD .....	1	1	1	1	1	1	
4	12310-ZW9-000	COVER COMP., HEAD .....	1	1	1	1	1	1	
5	12312-ZW9-000	PACKING, HEAD COVER .....	1	1	1	1	1	1	
6	15611-921-000	CAP, OIL (NO GAUGE) .....	1	1	1	1	1	1	
7	16617-ZW9-000	HOLDER, CABLE (###).....	1	1	1	1	1	1	SC, SG LHC, LHD LHC, LHD
	16617-ZW9-010	.....	1	1	1	1	1	1	

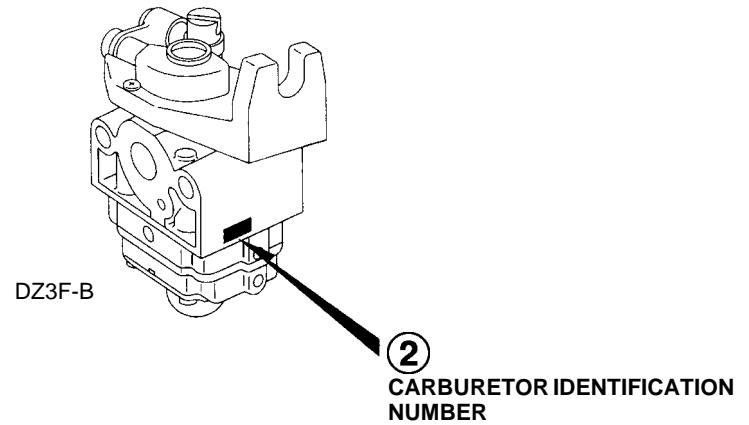
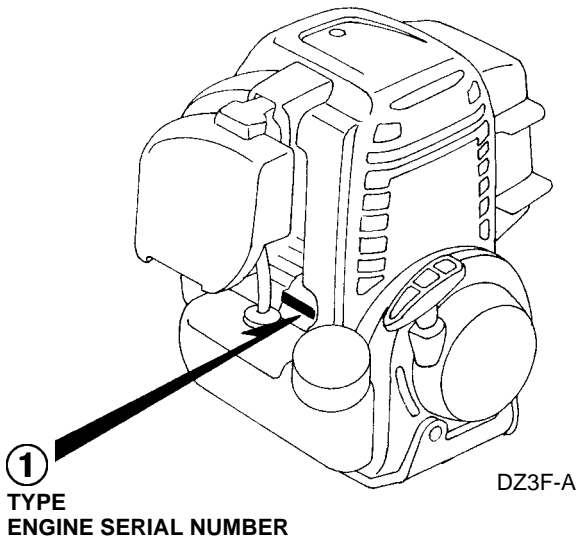
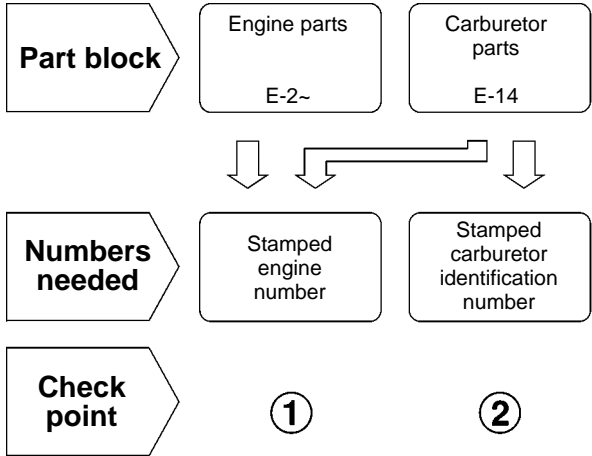
The number has been used from the initial model without revision. When shown at the left side, it is applicable to the models of No.1001801 and the subsequent numbers. When shown at the right side, it is applicable to the models up to No.1001800.

• The parts listed with "###" at the end of the parts name have limited supply period (parts not for sale).

• The following abbreviations are used in the parts name column.

- |  |                             |
|--|-----------------------------|
| A ..... Ampere                               | FR. ....Front               |
| A.C. .... Alternating current                | IN. ....Inlet               |
| ASSY. .... Assembly                          | L (100L) .Link (100 Links)  |
| AT. .... Automatic transmission              | L. ....Left                 |
| C.D.I. .... Capacitive discharge ignition    | MM .....Millimeter          |
| COMP. ... Complete                           | MT. ....Manual Transmission |
| D.C. .... Direct current                     | P.T.O. ....Power take off   |
| EX. .... Exhaust                             | R. ....Right                |
| G.F.C.I ... Ground fault circuit interruptor | RR. ....Rear                |
| HEX. .... Hexagonal                          | STD. ....Standard           |
| H.S.T. .... Hydrostatic transmission         | T (22T) ...Tooth (22 Teeth) |
|  | V ..... Volt                |
|  | W .....Watt                 |

How to check the part block and serial numbers





### Models, parts catalogue codes and applicable serial numbers

- Models, parts catalogue codes and applicable serial Nos. given in this parts catalogue can be identified as follows.

Model	Type	Parts catalogue type	Applicable engine serial No.	Applicable carburetor identification No.
GX35T	SAMS	SAMS	GCAMT-1000001~	WYB 23
	SATM	SATM		WYB 15B/D
	SAU	SAU		WYB 23
	SAUT	SAUT		WYB 14B
	SAW	SAW		
	SD	SD		
	SD2	SD2		
	SD2S	SD2S		
	SD2T	SD2T		
	SDH	SDH		WYB 15B/D
	SDL	SDL		WYB 14B
	SDS	SDS		

Model	Type	Parts catalogue type	Applicable engine serial No.	Applicable carburetor identification No.
GX35T	SDT	SDT	GCAMT-1000001~	WYB 14B
	SJ	SJ		
	SJS	SJS		
	SJT	SJT		
	SK	SK		
	SKS	SKS		
	SMG	SMG		WYB 25/WYB 25A
	SUT	SUT		WYB 15B/D
	SGT3	SGT3		WYB 14D
	SGT9	SGT9		
	ST3E	ST3E		
	ST4	ST4		
	T4	T4		WYB 22A

\* Of carburetor identification numbers, only the portions underlined in the example below are used for registration.

WYB 23 KC ナ

Features of each type

- See the following table for the features of each type. (Items in brackets are optional)

Specifications	Model	GX35T											
	Type	SAMS	SATM	SAU	SAUT	SAW	SD	SD2	SD2S	SD2T	SDH	SDL	SDS
Tank guard					●					●			

Specifications	Model	GX35T												
	Type	SDT	SJ	SJS	SJT	SK	SKS	SMG	SUT	SGT3	SGT9	ST3E	ST4	T4
Tank guard		●			●				●	●	●	●	●	

1

## Fuel hose, general purpose hoses and vinyl hose

- The standard part fuel hose, general purpose hose and vinyl hose may be substituted by the coiled bulk part.
- When ordering the standard part fuel hose, general purpose hose and vinyl hose use the bulk part number written in the parts catalog in brackets ( ) underneath the part name.
- When exchanging the hose, cut and use at the specified length as mentioned in the part name.  
(For the method of cutting the bulk part, and method of filling out orders etc., please refer to the instructions issued with the bulk part.)

### Bulk part number of fuel hose, general purpose hose and vinyl hose.

Example: 9 5 0 0 1 - 7 5 0 0 1 - 5 0 M

**Bulk part number:**  
Refers to the bulk part.

**Marking code (fuel hose and general purpose hose)**

**Change code (Vinyl hose)**

Indicates number mark or change sequence, however, the code for the bulk part must be strictly 0 (zero).

**Types of code:**

- |             |  |                |  |              |   |
|-------------|--|----------------|--|--------------|---|
| • Fuel hose | 2: Red outside braid<br>(3 mm inside dia. only)        | • General hose | 1: Ash gray<br>2: Ash gray<br>3: Black<br>5: Black | • Vinyl hose | 1: Clear<br>2: Black<br>3: Light red<br>6: Light red<br>7: Pale black |
|             | 5: Black inside braid                                  |                |  |              |   |
|             | 3: Red (3 mm inside dia. only)                         |                |  |              |   |
|             | 4: Ash gray with red stripe<br>(3 mm inside dia. only) |                |  |              |   |
|             | 6: Black   |                |  |              |   |

**Lengths:**

- 001: 1 m (standard)  
003: 3 m  
008: 8 m } Application or specification of some parts is not settled.

**I.D code: (fuel hose and general purpose hose)**

- |            |                    |                    |                             |                             |
|------------|--------------------|--------------------|-----------------------------|-----------------------------|
| 30: 3.0 mm | 50: 5.0 mm         | 70: 7.0 mm         | 11: 11 mm                   | 12: 12 (outside dia. 17) mm |
| 35: 3.5 mm | 55: 5.3 mm, 5.5 mm | 75: 7.3 mm, 7.5 mm | 91: 12 (outside dia. 15) mm | 14: 14 mm                   |
| 45: 4.5 mm | 65: 6.5 mm         | 80: 8.0 mm         | 92: 12 (outside dia. 16) mm | 17: 17 mm                   |

**ID./OD. code: (vinyl hose)**

- |                         |                          |                           |                           |                           |
|-------------------------|--------------------------|---------------------------|---------------------------|---------------------------|
| 01: ID. 2.9, OD. 6.8 mm | 12: ID. 5.0, OD. 7.0 mm  | 21: ID. 8.0, OD. 9.0 mm   | 37: ID. 11.0, OD. 15.0 mm | 50: ID. 16.0, OD. 19.0 mm |
| 03: ID. 3.0, OD. 6.0 mm | 10: ID. 5.0, OD. 8.0 mm  | 23: ID. 8.0, OD. 12.0 mm  | 38: ID. 12.0, OD. 13.0 mm | 55: ID. 17.5, OD. 20.5 mm |
| 05: ID. 3.5, OD. 6.5 mm | 11: ID. 5.0, OD. 9.0 mm  | 25: ID. 9.0, OD. 11.0 mm  | 39: ID. 12.0, OD. 14.0 mm | 60: ID. 22.0, OD. 27.0 mm |
| 07: ID. 4.0, OD. 7.0 mm | 14: ID. 6.0, OD. 9.0 mm  | 27: ID. 9.0, OD. 13.0 mm  | 40: ID. 12.0, OD. 16.0 mm |                           |
| 08: ID. 4.5, OD. 6.5 mm | 17: ID. 7.0, OD. 9.0 mm  | 33: ID. 10.0, OD. 14.0 mm | 43: ID. 13.0, OD. 15.0 mm |                           |
| 09: ID. 4.5, OD. 8.0 mm | 19: ID. 7.0, OD. 11.0 mm | 36: ID. 11.0, OD. 13.0 mm | 45: ID. 14.0, OD. 18.0 mm |                           |

**Hose type:**

- 1: Fuel hose  
3: Vinyl hose  
5: General hose

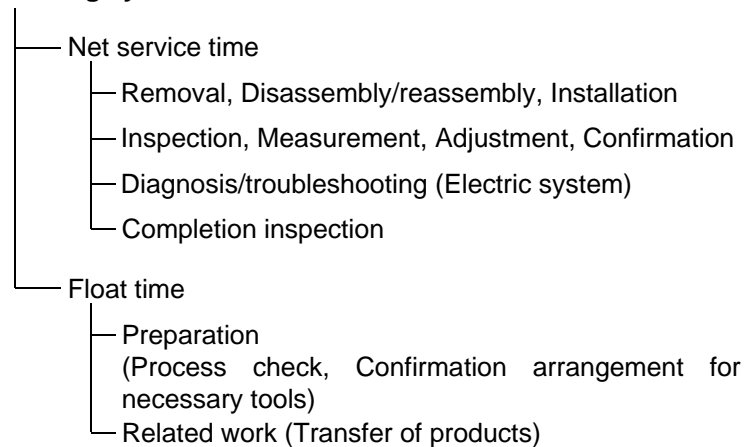
⊙ **CAUTION: It is DANGEROUS to confuse the fuel hose with the general purpose hose or vinyl hose.**

Never use a general purpose hose or vinyl hose in place of a fuel hose or vice versa. Always use the correct bulk part in the parts catalogue, according to the service manual or the instructions issued with the bulk part.

## FLAT RATE SERVICE TIME

Flat rate service time (FRT) means the standard time required to service a product, which is listed in this manual to help the dealers control the actual working process and calculate the service charge by using it as a guide.

### FRT setting system



\* Float time is set by multiplying the net service time by a given coefficient.

### Editorial style

The service items shown in the text are listed with the exchange work time for the repair sales parts as the subject. Other representative service items not using repair parts (removal/installation, adjustment, inspection/measuring, and other work) are listed collectively in the list in the preface, classified according to the work.

### FRT setting standard

- Decimal system (in unit of 0.1) is adopted to set FRT as it is convenient to calculate the wage.  
Example: (0.1) → 6 minutes, (0.2) → 12 minutes  
[Labor cost per hour] x [FRT] = [Wage]
- FRT is set with a hand tool.
- Service items and FRT can be subject to change depending on development of tools and service equipment and improvement in service procedure.

**Work procedure**

- As the work procedure is set with the work time according to the method in the separate Service Manual, refer to this Manual as required.
- Work methods permitting servicing in the shortest time still permitting assurance of safe work and product warranty are used for the setting of service items not listed in the Service Manual.
- Work basically is to be performed by one person, and when two or more people are required, setting is done as the total time for the number of people.
- The set value for the technological level of the workers uses a person with three years of experience in the repair of Honda products as the standard.
- Special tools and service equipment used to set FRT are those specified or recommended in Service Manual.

**Service item whose FRT is not presented**

- Accessories and service parts that are not listed to use in this manual.
  - Locations with little aging deterioration or breakage during normal use.
  - Service work that can be finished by one touch.
  - Service work that is seldom done (i.e. extremely small causes of trouble and service frequency).
  - Products and parts whose location for installation differs according to its status of use and application.
- \* When FRT is not presented, please calculate wages based on appropriate actual work time.

**Operation not included of FRT**

- Oil and coolant water draining, Waiting time for warming up operation and etc..
- Additional operation that involves removal/installation of standard exterior equipment.
- Indirect time spent for service by visiting the customer, trade-in, and delivery.
- Indirect time required for ordering and delivery of parts.
- Cost for grease, adhesive agent, etc. used for service work.

**Explanation of FRT by using an example  
(The example may differ from the actual presented items)**

Ref. No.	L.O.N.	(Relative ref. Number) Description	F.R.T.
①	1111L1	④ (1, 3, 4, 7) VALVE, INTAKE .....4.1	②
②		• NOTE: OHV type ⑥	⑦
③	1111L1A	• Includes: Engine removal and installation One head (intake all) add .....1.4 ⑤	

- ① Reference No. of the illustration of part that shows location of the replacement work.
- ② FRT is an abbreviation of Flat Rate Time indicating the standard service time required for the replacement.
- ③ LON is an abbreviation of Labor Operation Number, and it is a classification of the service items by the work unit code.

The same operation code is used regardless of the models.

Standard operation is indicated with 6 digits code, and additional operation is indicated with 7 digits code.

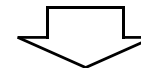
- ④ Indicating the intake valve replacement and FRT4.1.
- ⑤ Indicating FRT1.4 that will be added when additional operation (whole intake side of one cylinder head) is done in association with intake valve replacement.

- ⑥ Indicating work condition or application condition of the service item.
- ⑦ Indicating work contents that are included in the service item.
- ⑧ Indicating a reference No. whose operation and time are the same as FRT4.1 for the intake valve.

(The application range is limited to the service items without an LON setting within a same block.)

**How to refer to the service item by using the sample  
(intake valve replacement)**

Open to the page of the block where the intake valve's spare part illustration is shown.



Look for the intake valve illustration, and refer to the service item and FRT that agree with the reference No.

Indication mark for the listing of service items that continues to the following page

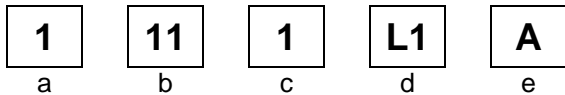
Ref. No.	L.O.N.	(Relative ref. Number) Description	F.R.T.
2	1111L1	VALVE, INTAKE .....	4.1
	.	.	.
	.	.	.

+  
Mark indicated at the last line.

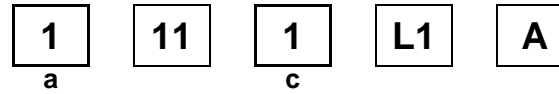
Indication of the block with no setting of FRT

Ref. No.	L.O.N.	(Relative ref. Number) Description	F.R.T.
NO INFORMATION .....			

• LON code system



- a) Category code..... Engine
- b) Location/function code..... Engine upper
- c) Operation code..... Replace
- d) Operation sequence number (Unit code can be shown with alphabet)  
..... Intake valve  
(No regular rule of code)
- e) Additional code ..... One head (intake all)  
(No regular rule of code)



a) Category codes and classification

Code	Category
1	Engine
2	Power drive
3	Fuel & Exhaust
4	Frame & Body
5	Steering
6	Electrical
7	Axle & Brake
8	Control system
9	-
0	Attachments

c) Operation codes and classification

Code	Operation category
1	Replace, Removal/Installation, Change
2	Overhaul
3	Adjust, Rotation
4	(Paint-related work: Top-coat)
5	Test, Inspect/diagnose, Measurement
6	(Overhaul-related work: Rebore)
7	(Overhaul-related work: Reseal)
8	(Resurface)
9	(Paint-related work: Refinish)
0	Repair, Cleaning, Air bleeding



Major service items without using spare parts  
 (2) Adjustment, (3) Inspection/Measurement,  
 (4) Overhaul, (5) Other work

E: Engine, T: Transmission, D: Drive system,  
 B: Body and related parts

### (2) Adjustment

	LON	DESCRIPTION	FRT
E	1113A1	<b>VALVE CLEARANCE-ADJUSTMENT</b> NOTE: For 1 product	0.4
	3113A2	<b>CARBURETOR IDLE-ADJUSTMENT</b>	0.2

### (3) Inspection, Measurement, Cleaning

	LON	DESCRIPTION	FRT
E	1105A0	<b>ENGINE OIL-INSPECTION</b>	0.1
	3100A0	<b>FUEL FILTER-CLEANING</b>	0.3
	3120A0	<b>AIR CLEANER-CLEANING</b> INCLUDES: Air cleaner-inspection	0.1
	3130A0	<b>SPARK ARRESTER-CLEANING</b> INCLUDES: Spark arrester-inspection	0.2
	6140A0	<b>SPARK PLUG-ADJUSTMENT/CLEANING</b> INCLUDES: Spark plug check NOTE: For 1 product	0.1

### (4) Overhaul

Work condition: The required Measurements, inspections, adjustments, and cleaning/washing of each part are performed, including the main body removal/installation work and the replacement of defective parts.

	LON	DESCRIPTION	FRT
E	3112A0	<b>CARBURETOR-OVERHAUL</b> INCLUDES: All necessary adjustment	0.4

### (5) Other work

	LON	DESCRIPTION	FRT
E	1101E1	<b>ENGINE OIL-CHANGE</b> INCLUDES: Engine oil-inspection	0.1

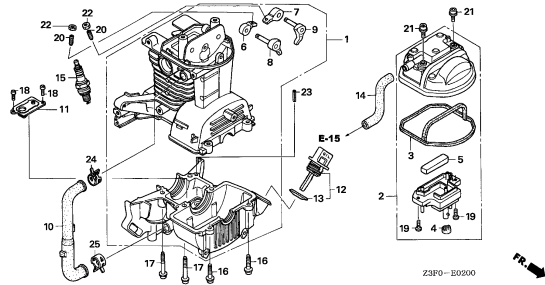
# ENGINE GROUP

**B15**

**E-2**

**CRANKCASE SET**

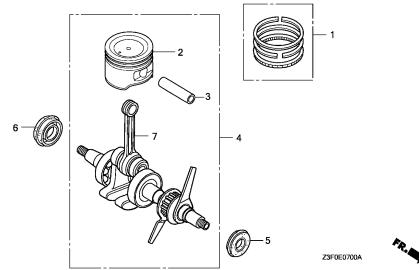
**C 1**



**E-7**

**CRANKSHAFT/PISTON**

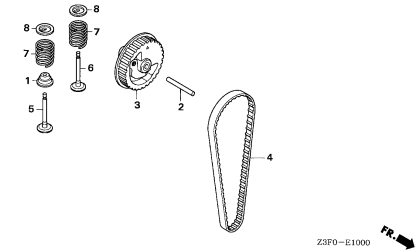
**C 3**



**E-10**

**CAM PULLEY**

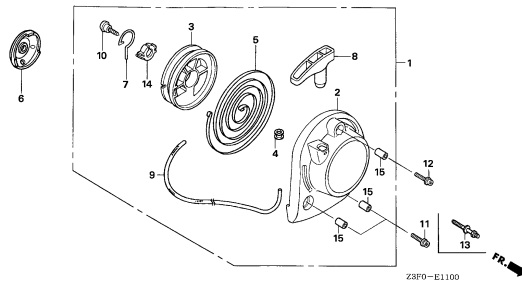
**C 4**



**E-11**

**RECOIL STARTER**

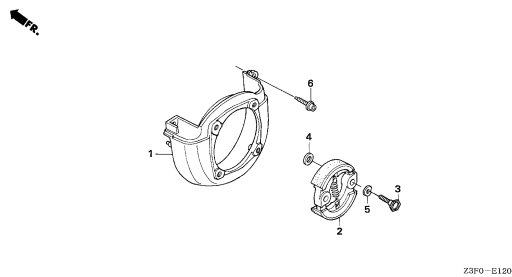
**C 5**



**E-12**

**FAN COVER/CLUTCH**

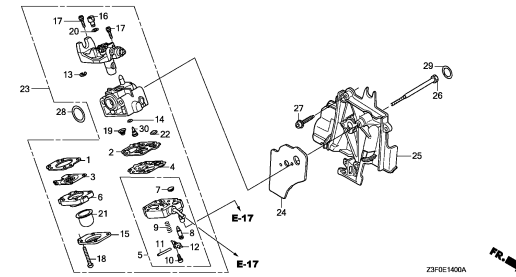
**C 6**



**E-14**

**CARBURETOR**

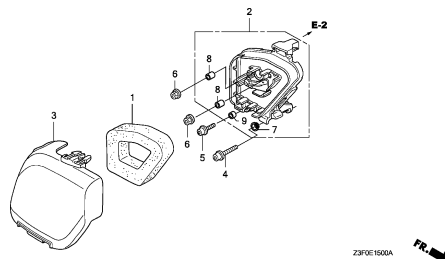
**C 7**



**E-15**

**AIR CLEANER**

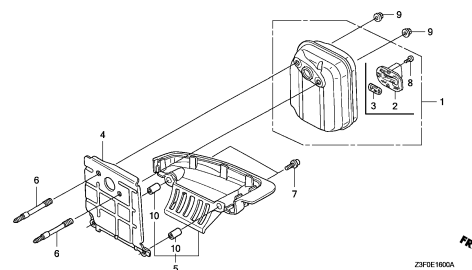
**C 9**



**E-16**

**MUFFLER**

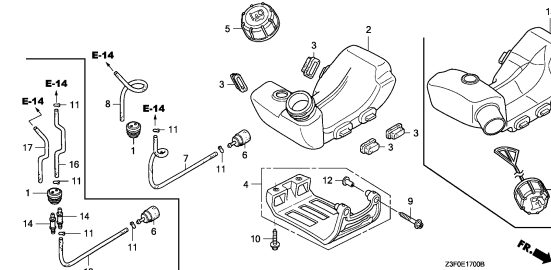
**C10**



**E-17**

**FUEL TANK**

**C11**



**2**

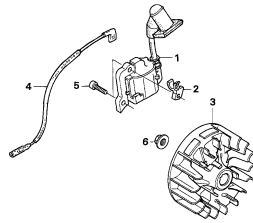
# ENGINE GROUP

**B16**

**E-19**

FLYWHEEL

**C12**

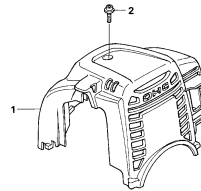


FR. →  
Z3F0-E1900

**E-27**

TOP COVER

**C13**

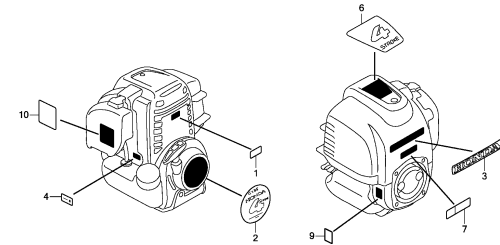


FR. →  
Z3F0-E2700

**E-28**

LABEL

**C14**

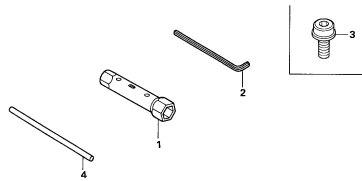


Z3F0E2800C

**E-29**

TOOL

**C16**

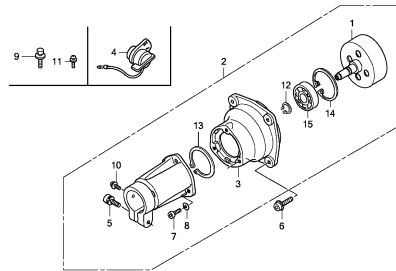


Z3F0-E2900

**E-40**

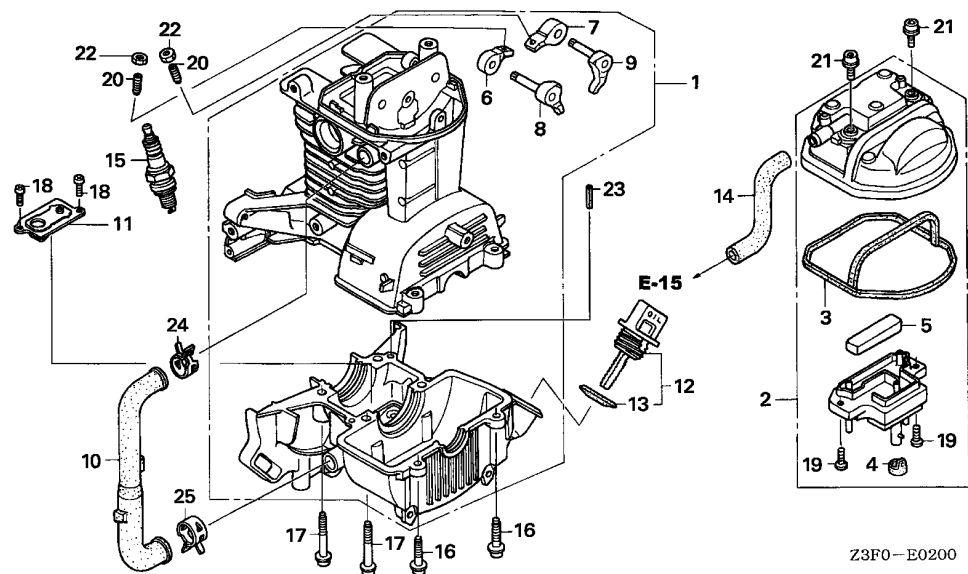
OTHER PARTS

**D 1**



Z3F0E4000

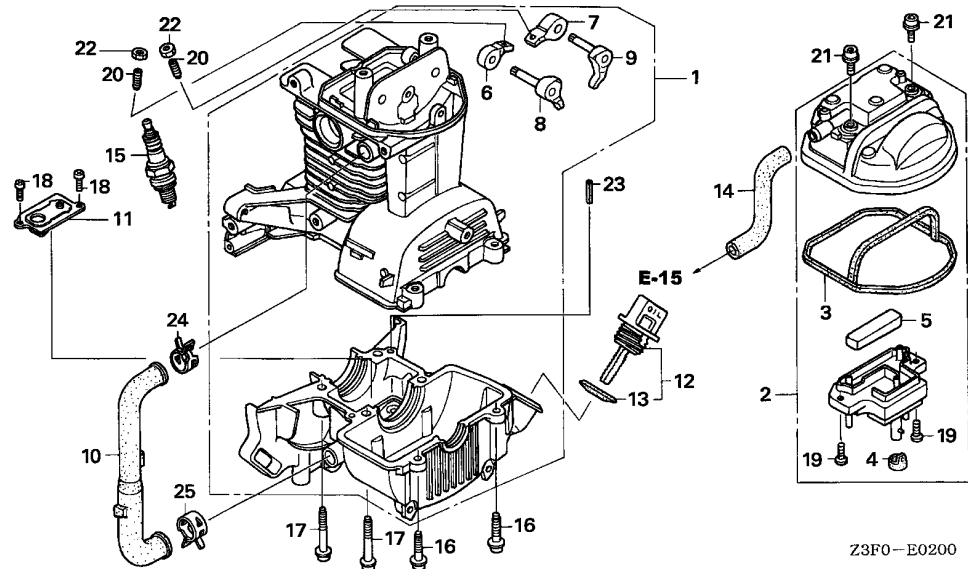
**2**



Ref. No.	L.O.N.	(Relative ref. Number) Description	F.R.T.
1	1101B7	CRANKCASE	1.5
2	1111D5	COVER, CYLINDER HEAD AND/OR PACKING	0.1
6	1111A2	ARM, ROCKER :INTAKE .INCLUDES: Valve clearance adjustment	0.6
7	1111A1	ARM, ROCKER :EXHAUST .INCLUDES: Valve clearance adjustment	0.6
8	1111L9	LIFTER, VALVE :INTAKE .INCLUDES: Valve clearance adjustment	0.6
9	1111M0	LIFTER, VALVE :EXHAUST .INCLUDES: Valve clearance adjustment	0.6
10	1171A4	TUBE, OIL	0.3
11	1171A2	PLATE, OIL OUTLET VALVE	1.0
14	1111K5	TUBE, BREATHER	0.2
15	6141C1	PLUG, SPARK .INCLUDES: Spark plug check	0.1

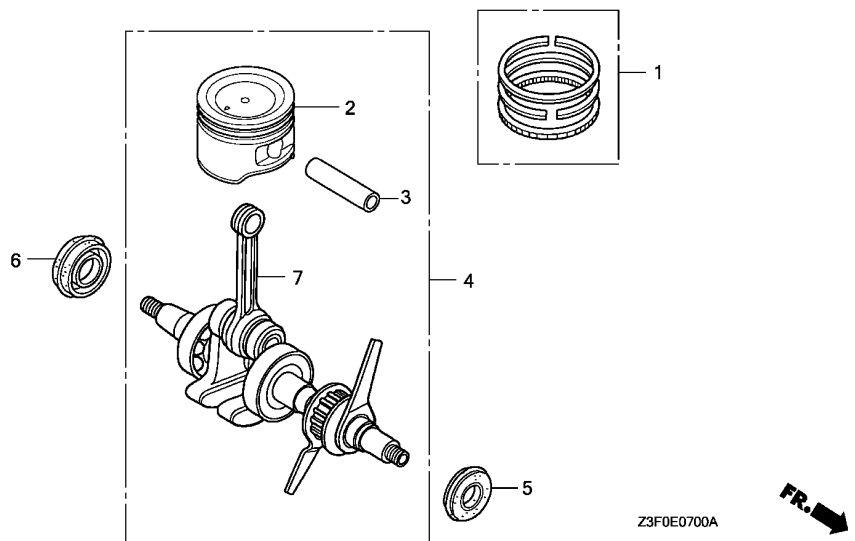
Ref. No.	Part No.	Description	Reqd. QTY		Serial No.	Parts catalogue code
			GX	35		
1	10100-Z3F-405	CRANKCASE SET	1			
2	12310-Z0Z-000	COVER, CYLINDER HEAD	1			
3	12312-Z0Z-300	SEAL, HEAD COVER	1			
4	12314-Z0H-300	GROMMET, HEAD COVER	1			
5	12367-Z0H-000	FILTER, BREATHER	1			
6	14431-Z0H-003	ARM, IN. VALVE ROCKER	1			
7	14441-Z0H-003	ARM, EX. VALVE ROCKER	1			
8	14730-Z0Z-000	LIFTER COMP., IN. VALVE	1			
9	14740-Z0Z-000	LIFTER COMP., EX. VALVE	1			
10	15422-Z0Z-000	TUBE, OIL	1			
11	15510-Z3E-000	PLATE ASSY., OIL OUTLET VALVE	1			
12	15600-Z3F-000	CAP ASSY., OIL FILLER	1			
13	15625-Z0T-800	PACKING, OIL FILLER CAP	1			
14	15721-Z0Z-000	TUBE, BREATHER	1			
15	31914-Z0H-003	PLUG, SPARK(CMR4H)(NGK)	(1)			SAMS,SATM,SAU,SAUT,SAW,SD,SD2,SD2S,SD2T,SDH,SDL,SDS,SDT,SGT3,SGT9,SK,SKS ST3E,ST4,SUT,T4
	31915-Z0H-003	PLUG, SPARK(CMR5H)(NGK)	1			SAMS,SATM,SAU,SAUT,SAW,SD,SD2,SD2S,SD2T,SDH,SDL,SDS,SDT,SGT3,SGT9,SK,SKS ST3E,ST4,SUT,T4
	31916-Z0H-003	PLUG, SPARK(CMR6H)(NGK)	(1)			SAMS,SATM,SAU,SAUT,SAW,SD,SD2,SD2S,SD2T,SDH,SDL,SDS,SDT,SGT3,SGT9,SK,SKS ST3E,ST4,SUT,T4
	31914-Z0H-801	PLUG, SPARK(CM4H)(NGK)	(1)			SJ,SJS,SJT,SMG
	31915-Z0H-801	PLUG, SPARK(CM5H)(NGK)	1			SJ,SJS,SJT,SMG
	31916-Z0H-801	PLUG, SPARK(CM6H)(NGK)	(1)			SJ,SJS,SJT,SMG
16	90009-Z0H-003	BOLT, SOCKET, 5X20	2			
17	90010-Z0Z-003	BOLT, SOCKET, 5X32	4			
18	90013-Z3E-003	SCREW, PAN, 4X8	2			SAMS,SAW,SD2,SD2S,SD2T,SDH,SDL,SGT3,SGT9,SK,SKS,ST3E,ST4,T4





2

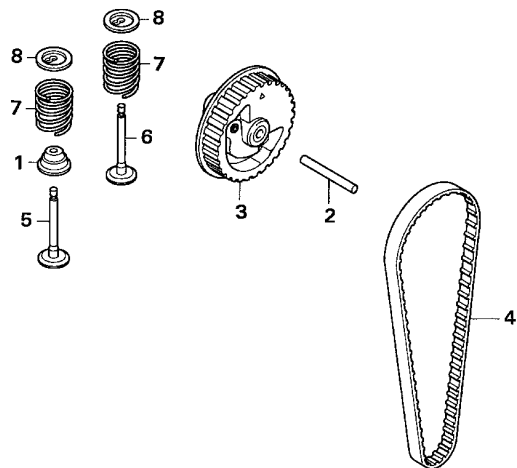
Ref. No.	Part No.	Description	Reqd. QTY		Serial No.	Parts catalogue code
			GX	T		
18)	90013-Z0H-004	SCREW, PAN, 4X8	2		1088910	SATM,SAU,SAUT,SD,SDS,SDT,SJ,SJS,SJT,SMG,SUT
	90013-Z3E-003	.....	2		1088911	SATM,SAU,SAUT,SD,SDS,SDT,SJ,SJS,SJT,SMG,SUT
19	90013-Z3F-003	SCREW, PAN, 4X8	2			SAMS,SAW,SD2,SD2S,SD2T,SDH,SDL,SGT3,SGT9,SK,SKS,ST3E,ST4,T4
	90013-Z0Z-003	.....	2		1088910	SATM,SAU,SAUT,SD,SDS,SDT,SJ,SJS,SJT,SMG,SUT
	90013-Z3F-003	.....	2		1088911	SATM,SAU,SAUT,SD,SDS,SDT,SJ,SJS,SJT,SMG,SUT
20	90017-Z0H-000	SCREW, TAPPET ADJUSTING	2			
21	90019-Z0H-003	BOLT, SOCKET, 5X12	2			
22	90206-ZM3-000	NUT, TAPPET ADJUSTING	2			
23	94305-40102	PIN, SPRING, 4X10	1			
24	95002-41200-08	CLAMP, TUBE(D12)	1			
25	95002-41300-04	CLAMP, TUBE(D13)	1			



Ref. No.	L.O.N.	(Relative ref. Number) Description	F.R.T.
1	(2,3)		
	1111J4	RING SET, PISTON .....	1.4
	1111J4F	.Replace 1 piston and/or pin and/or connecting rod and/or bearing add .....	0.1
4	1101R3	CRANKSHAFT ASSEMBLY .....	1.3
5	1101E4	OIL SEAL, CRANKSHAFT :FRONT ..	1.2
6	1101E5	OIL SEAL, CRANKSHAFT :REAR ...	1.2
7	1101F0	CRANKSHAFT .....	1.5

Ref. No.	Part No.	Description	Reqd. QTY	Serial No.	Parts catalogue code
			GX 35 T		
1	13010-ZM5-000	RING SET, PISTON .....	1		
2	13101-Z0Z-000	PISTON .....	1	-----	SAMS,SATM,SAU,SAUT,SAW,SD,SD2,SD2S,SD2T,SDH,SDL,SDS,SDT,SJ,SJS,SJT,SK,SKS SMG,SUT
	13101-Z0Z-010	.....	1	-----	SGT3,SGT9,ST3E,ST4,T4
3	13111-ZM5-000	PIN, PISTON .....	1		
4	13310-Z0Z-000	CRANKSHAFT COMP. ....	1	-----	SAMS,SATM,SAU,SAUT,SAW,SD,SD2,SD2S,SD2T,SDH,SDL,SDS,SDT,SJ,SJS,SJT,SK,SKS SMG,SUT
	13310-Z0Z-010	.....	1	-----	SGT3,SGT9,ST3E,ST4,T4
5	91212-Z3E-003	OIL SEAL, 10X20X5 .....	1	-----	SAMS,SAW,SD2,SD2S,SD2T,SDH,SDL,SGT3,SGT9,SK,SKS,ST3E,ST4,T4
	91212-Z3E-000	.....	1	1088910	SATM,SAU,SAUT,SD,SDS,SDT,SJ,SJS,SJT,SMG,SUT
	91212-Z3E-003	.....	1	1088911	SATM,SAU,SAUT,SD,SDS,SDT,SJ,SJS,SJT,SMG,SUT
6	91214-Z3F-003	OIL SEAL, 15X25X6 .....	1	-----	SAMS,SAW,SD2,SD2S,SD2T,SDH,SDL,SGT3,SGT9,SK,SKS,ST3E,ST4,T4
	91214-Z3F-000	.....	1	1088910	SATM,SAU,SAUT,SD,SDS,SDT,SJ,SJS,SJT,SMG,SUT
	91214-Z3F-003	.....	1	1088911	SATM,SAU,SAUT,SD,SDS,SDT,SJ,SJS,SJT,SMG,SUT
7	13310-Z0Z-305	CRANKSHAFT COMP. ....	(1)	-----	SAMS,SATM,SAU,SAUT,SAW,SD,SD2,SD2S,SD2T,SDH,SDL,SDS,SDT,SJ,SJS,SJT,SK,SKS SMG,SUT

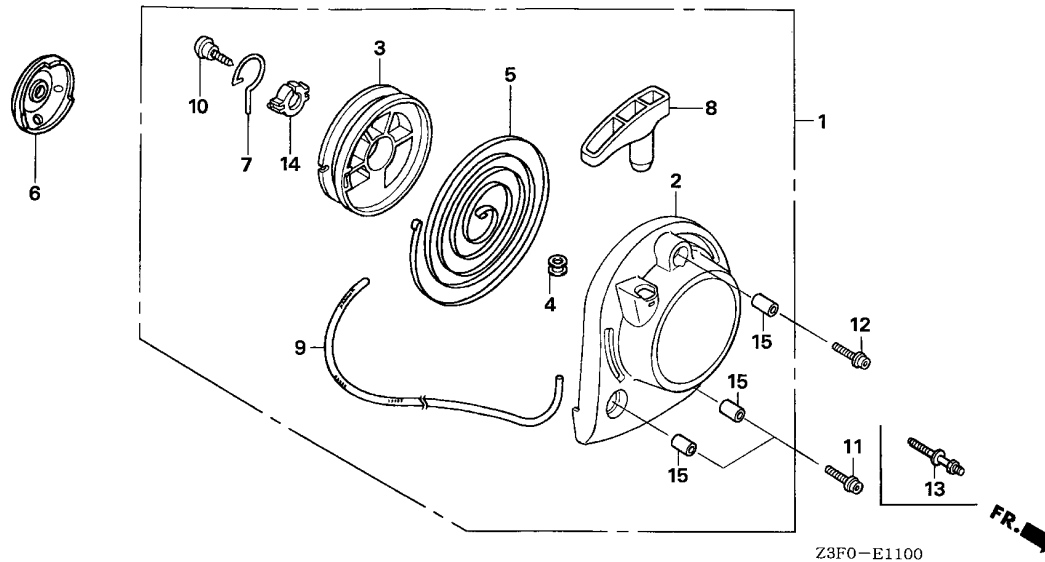




Z3F0-E1000

Ref. No.	L.O.N.	(Relative ref. Number) Description	F.R.T.
1	1111K2	SEAL, INTAKE VALVE STEM ..... .INCLUDES: Valve clearance adjustment	1.3
3	1111N5	PULLEY, CAMSHAFT ..... .INCLUDES: Valve clearance adjustment	0.4
4	1111N6	BELT, TIMING ..... .INCLUDES: Valve clearance adjustment	1.2
5	1111L1	VALVE, INTAKE ..... .INCLUDES: Valve clearance adjustment and reface	1.3
	1111L1E	.Replace intake and exhaust all add .....	0.1
6	1111L0	VALVE, EXHAUST ..... .INCLUDES: Valve clearance adjustment and reface	1.3
	1111L0E	.Replace intake and exhaust all add .....	0.1

Ref. No.	Part No.	Description	Reqd. QTY	Serial No.	Parts catalogue code
			GX 35 T		
1	12209-Z3E-003	SEAL, VALVE STEM .....	1	-----	SAMS,SAW,SD2,SD2S,SD2T,SDH,SDL,SGT3,SGT9,SK,SKS,ST3E,ST4,T4
	12209-Z3E-000	.....	1	-----	1088910 SATM,SAU,SAUT,SD,SDS,SDT,SJ,SJS,SJT,SMG,SUT
	12209-Z3E-003	.....	1	1088911	----- SATM,SAU,SAUT,SD,SDS,SDT,SJ,SJS,SJT,SMG,SUT
2	14126-Z0Z-003	ROLLER, 4X31.8 .....	1	-----	
3	14320-Z0Z-000	PULLEY COMP., CAMSHAFT .....	1	-----	
4	14400-Z3F-003	BELT, TIMING(76ZU7 G-300) .....	1	-----	SAMS,SAW,SD2,SD2S,SD2T,SDH,SDL,SGT3,SGT9,SK,SKS,ST3E,ST4,T4
	14400-Z0Z-003	.....	1	-----	1022910 SATM,SAU,SAUT,SD,SDS,SDT,SJ,SJS,SJT,SMG,SUT
	14400-Z3F-003	.....	1	1022911	----- SATM,SAU,SAUT,SD,SDS,SDT,SJ,SJS,SJT,SMG,SUT
5	14711-Z0Z-800	VALVE, IN. ....	1	-----	
6	14721-Z0Z-800	VALVE, EX. ....	1	-----	
7	14751-Z0Z-000	SPRING, VALVE .....	2	-----	
8	14771-Z0H-000	RETAINER, VALVE SPRING .....	2	-----	



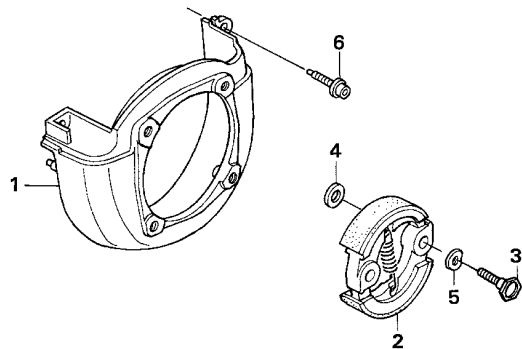
Z3F0-E1100

Ref. No.	L.O.N.	(Relative ref. Number) Description	F.R.T.
1	1121B9	STARTER, RECOIL .....	0.2
3	1121B1	REEL, RECOIL STARTER .....	0.3
5	1121B7	SPRING, RECOIL STARTER RETURN .....	0.3
6	1121A9	PULLEY, RECOIL STARTER .....	0.3
8	1121A3	GRIP, RECOIL STARTER .....	0.1
9	1121B3	ROPE, RECOIL STARTER .....	0.3

Ref. No.	Part No.	Description	Reqd. QTY	Serial No.	Parts catalogue code
			GX 35 T		
1	28400-Z0Z-003	STARTER ASSY., RECOIL .....	1		
2	28414-Z0Z-000	CASE, RECOIL STARTER .....	1		
3	28421-ZM3-003	REEL, RECOIL STARTER .....	1		
4	28433-ZM3-003	GUIDE, ROPE .....	1		
5	28442-Z0H-003	SPRING, RECOIL STARTER .....	1		
6	28451-Z0H-003	PULLEY, RECOIL STARTER .....	1		
7	28459-Z0H-003	ARM, SWING .....	1		
8	28461-ZM3-003	KNOB, RECOIL STARTER .....	1		
9	28462-ZM3-003	ROPE, RECOIL STARTER .....	1		
10	90012-ZM3-003	SCREW, SETTING .....	1		
11	90018-Z0H-003	BOLT, SOCKET, 5X16 .....	2	-----	SAMS,SATM,SAU,SAW,SD,SD2,SDH,SDL,SJ,SK,SMG,T4
12	90018-Z0H-003	BOLT, SOCKET, 5X16 .....	1		
13	90043-Z0H-000	BOLT, STUD, B .....	2	-----	SD2S,SDS,SJS,SKS
14	91504-ZM3-003	COLLAR .....	1		
15	91506-ZM3-000	COLLAR A, HEAD COVER .....	3		



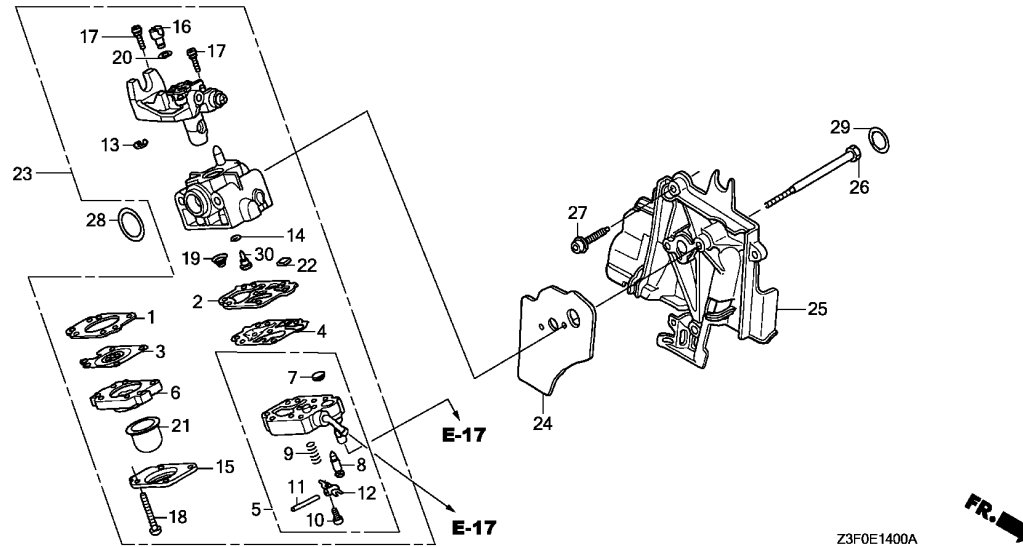




Z3F0-E1200

Ref. No.	L.O.N.	(Relative ref. Number) Description	F.R.T.
1	1141G8	COVER, ENGINE COOLING FAN ....	0.1
2	2121F7	CLUTCH, CENTRIFUGAL .....	0.3

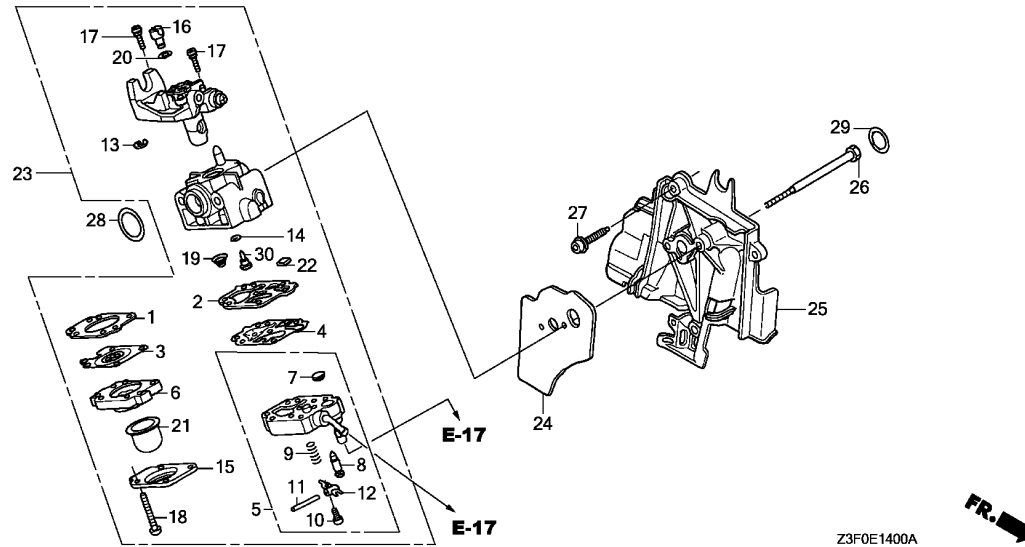
Ref. No.	Part No.	Description	Reqd. QTY	Serial No.	Parts catalogue code
			GX 35 T		
1	19611-Z0Z-000	COVER, FAN .....	1		
2	22000-Z0Z-003	CLUTCH ASSY. ....	1		
3	22253-Z3F-000	BOLT, CLUTCH(8MM) .....	2		
4	22254-Z3F-000	WASHER, CLUTCH(8X17) .....	2		
5	22255-Z3F-000	WASHER, WAVE(10MM) .....	2		
6	90009-Z0H-003	BOLT, SOCKET, 5X20 .....	3		



Ref. No.	L.O.N.	(Relative ref. Number) Description	F.R.T.
2		(19,22)	
3111B7		GASKET, CARBURETOR PUMP .....	0.4
5		(4,7)	
3111A0		BODY ASSEMBLY, PUMP .....	0.4
6		(1,3)	
3111A1		BODY, AIR PURGE .....	0.3
8		3111E3 VALVE, INLET NEEDLE .....	0.4
21		3111D5 PUMP, PRIMER .....	0.3
23		3111F3 CARBURETOR .....	0.2
24		3111C8 PACKING, CARBURETOR .....	0.2
25		4141E3 SHROUD, ENGINE .....	0.2
28		3111C7 O-RING, CARBURETOR BODY .....	0.1
30		(14)	
3111C3		JET, MAIN .....	0.4

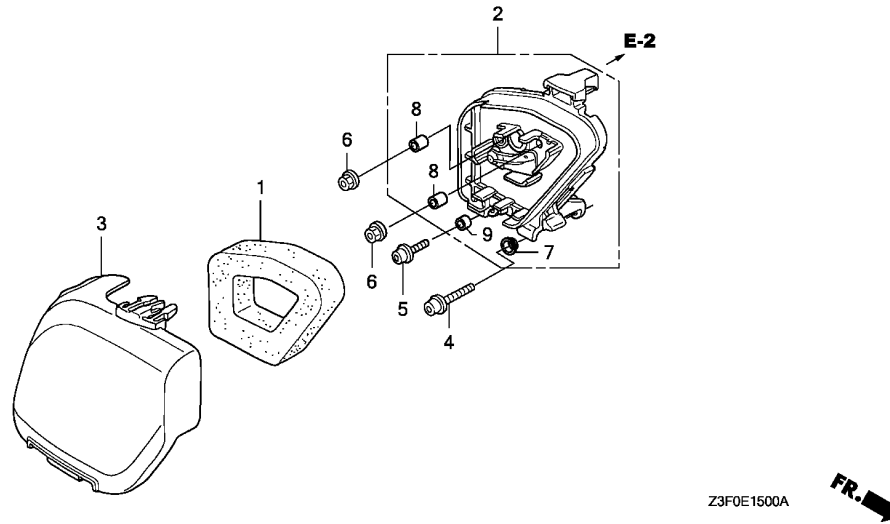
Ref. No.	Part No.	Description	Reqd. QTY	Serial No.	Parts catalogue code
			GX 35 T		
1	16010-ZM3-004	GASKET, METERING DIAPHRAGM ..	1		
2	16011-ZOH-013	GASKET, PUMP .....	1		
3	16013-ZOH-003	DIAPHRAGM ASSY., METERING ...	1		
4	16014-ZM3-004	DIAPHRAGM, PUMP .....	1		
5	16015-ZOH-013	BODY ASSY., PUMP .....	1		
6	16017-ZM3-004	BODY ASSY., AIR PURGE .....	1		
7	16018-ZM3-802	SCREEN, INLET .....	1		
8	16019-ZM3-004	VALVE, INLET NEEDLE .....	1		
9	16020-ZM3-004	SPRING, METERING LEVER .....	1		
10	16021-ZM3-004	SCREW, METERING LEVER PIN ...	1		
11	16022-ZM3-014	PIN, METERING LEVER .....	1		
12	16023-ZM3-004	LEVER, METERING .....	1		
13	16024-ZOH-003	RING, RETAINING .....	1		
14	16025-ZM3-004	O-RING .....	1		
15	16026-ZM3-004	COVER, PRIMER PUMP .....	1		
16	16027-ZM3-004	SWIVEL .....	1		
17	16028-ZM3-004	SCREW, THROTTLE COLLAR .....	2		
18	16029-ZM3-004	SCREW, PUMP COVER .....	4		
19	16030-ZM3-004	SPRING, PUMP .....	1		
20	16031-ZM3-004	WASHER .....	1		
21	16032-ZM3-004	PUMP, PRIMER .....	1		
22	16035-ZM3-802	FILTER, FUEL INLET .....	1		
23	16100-Z3F-842	CARBURETOR ASSY.(WYB 23) ....	1	----- SAMS,SATM,SAW	
	16100-Z0Z-814	CARBURETOR ASSY.(WYB 14B) ...	1	----- SD,SD2,SD2S,SD2T,SDH,SDS,SDT,SJ,SJS,SJT,SK,SKS	
	16100-Z0Z-815	CARBURETOR ASSY.(WYB 14D) ...	1	----- SGT3,SGT9,ST3E,ST4	





2

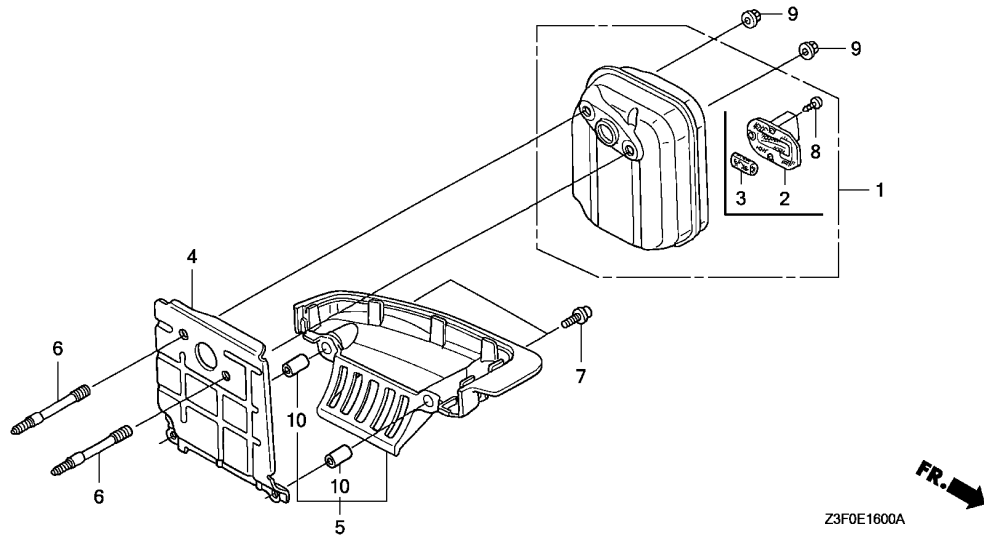
Ref. No.	Part No.	Description	Reqd. QTY		Serial No.	Parts catalogue code
			GX 35 T			
23)	16100-Z6K-014	CARBURETOR ASSY. (WYB 22A) . . .	1	-----	-----	T4
	16100-Z0Z-804	CARBURETOR ASSY. (WYB 15B) . . .	1	-----	2085394	SAU, SAUT, SDL, SUT
	16100-Z3F-852	CARBURETOR ASSY. (WYB 25) . . .	1	-----	2135288	SMG
	16100-Z0Z-805	CARBURETOR ASSY. (WYB 15D) . . .	1	2085395	-----	SAU, SAUT, SDL, SUT
	16100-Z3F-853	CARBURETOR ASSY. (WYB 25A) . . .	1	2135289	-----	SMG
24	16221-Z0Z-000	PACKING, CARBURETOR . . . . .	1			
25	19631-Z0Z-010	SHROUD . . . . .	1			
26	90014-Z0H-003	BOLT, 5X53 . . . . .	2			
27	90018-Z0H-003	BOLT, SOCKET, 5X16 . . . . .	2			
28	91301-ZM3-000	O-RING, 14.8X2.4 . . . . .	1			
29	91308-Z3E-000	O-RING, 12.3X2.4 . . . . .	1			
30	99101-Z0Z-0360	JET (#36) . . . . .	1	-----	-----	SAMS, SATM, SAW
	99101-ZM5-0350	JET (#35) . . . . .	(1)	-----	-----	SAMS, SATM, SAW, SD, SD2, SD2S, SD2T, SDH, SDS, SDT, SGT3, SGT9, SJ, SJS, SJT, SK, SKS SMG, ST3E, ST4
	99101-ZM5-0340	JET (#34) . . . . .	(1)	-----	-----	SAMS, SATM, SAW, T4
	99101-Z0Z-0360	JET (#36) . . . . .	(1)	-----	-----	SAU, SAUT, SD, SD2, SD2S, SD2T, SDH, SDL, SDS, SDT, SGT3, SGT9, SJ, SJS, SJT, SK, SKS, SMG ST3E, ST4, SUT
	99101-Z0Z-0370	JET (#37) . . . . .	(1)	-----	-----	SAU, SAUT, SDL, SUT
	99101-Z0Z-0380	JET (#38) . . . . .	1	-----	-----	SAU, SAUT, SDL, SUT
	99101-Z0Z-0370	JET (#37) . . . . .	1	-----	-----	SD, SD2, SD2S, SD2T, SDH, SDS, SDT, SGT3, SGT9, SJ, SJS, SJT, SK, SKS, SMG, ST3E, ST4
	99101-ZM5-0330	JET (#33) . . . . .	(1)	-----	-----	T4
	99101-ZM5-0350	JET (#35) . . . . .	1	-----	-----	T4



Ref. No.	L.O.N.	(Relative ref. Number) Description	F.R.T.
1	3121B8	ELEMENT, AIR CLEANER ..... .INCLUDES: Air cleaner element -inspection	0.1
2	3121A5	CASE, AIR CLEANER .....	0.1
3	3121B1	COVER, AIR CLEANER .....	0.1

Ref. No.	Part No.	Description	Reqd. QTY	Serial No.	Parts catalogue code
			GX 35 T		
1	17211-Z0Z-000	ELEMENT, AIR CLEANER .....	1		
2	17220-Z0Z-000	CASE COMP., AIR CLEANER .....	1		
3	17231-Z0Z-000	COVER, AIR CLEANER .....	1	-----	SAMS,SATM,SAU,SAUT,SAW,SD,SD2,SD2S,SD2T,SDH,SDL,SDS,SDT,SJ,SJS,SJT,SK,SKS SMG,SUT
	17231-Z0Z-010	.....	1	-----	SGT3,SGT9,ST3E,ST4,T4
4	90009-Z0Z-003	BOLT, SOCKET, 5X25 .....	1		
5	90018-Z0H-003	BOLT, SOCKET, 5X16 .....	1		
6	94050-05000	NUT, FLANGE, 5MM .....	2		
7	91501-Z0Z-000	COLLAR, AIR CLEANER CASE .....	1		
8	91503-ZM3-000	COLLAR, AIR CLEANER .....	2		
9	91506-ZM3-000	COLLAR A, HEAD COVER .....	1		





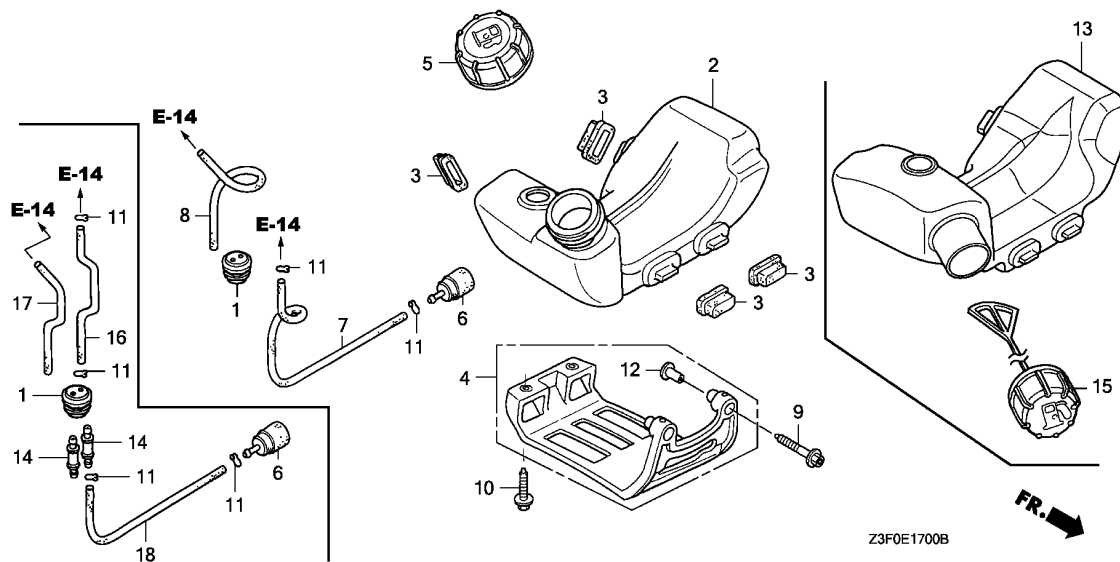
Ref. No.	L.O.N.	(Relative ref. Number) Description	F.R.T.
1	3131C5	MUFFLER, EXHAUST .....	0.1
2	3131A1	ARRESTER, SPARK .....	0.1
		.INCLUDES: Spark arrester check	
4	3131B6	GUIDE, AIR EXHAUST .....	0.1
5	3131G8	GUIDE, AIR EXHAUST :UNDER ....	0.1

Ref. No.	Part No.	Description	Reqd. QTY		Serial No.	Parts catalogue code
			GX	T		
1	18310-Z3F-820	MUFFLER COMP.(ARRESTER) .....	1		-----	SAMS,SATM,SAW,T4
	18310-Z0Z-801	.....	1		-----	SAU,SAUT,SGT3,SGT9,ST3E,ST4,SUT
	18310-Z0Z-010	MUFFLER COMP. ....	1		-----	SD,SD2,SD2S,SD2T,SDH,SDL,SDS,SDT,SJ,SJS,SJT,SK,SKS
	18310-Z3F-830	.....	1		-----	SMG
2	18350-Z0Z-800	ARRESTER COMP., SPARK .....	1		-----	SAMS,SATM,SAU,SAUT,SAW,SGT3,SGT9,ST3E,ST4,SUT,T4
3	18354-Z0Z-800	FILTER, EXHAUST .....	1		-----	SAMS,SATM,SAU,SAUT,SAW,SGT3,SGT9,ST3E,ST4,SUT,T4
4	18515-Z0Z-300	GUIDE, AIR .....	1			
5	18518-Z0Z-020	GUIDE COMP., UNDER AIR .....	1			
6	90001-Z0Z-013	BOLT, STUD, 5X56.5 .....	2			
7	90018-Z0H-003	BOLT, SOCKET, 5X16 .....	2			
8	90055-ZE1-000	SCREW, TAPPING, 4X6 .....	3		-----	SAMS,SATM,SAU,SAUT,SAW,SGT3,SGT9,ST3E,ST4,SUT,T4
9	90136-SM4-901	NUT, SELF-LOCK, 5MM .....	2			
10	91506-ZM3-000	COLLAR A, HEAD COVER .....	2			

E-17

FUEL TANK

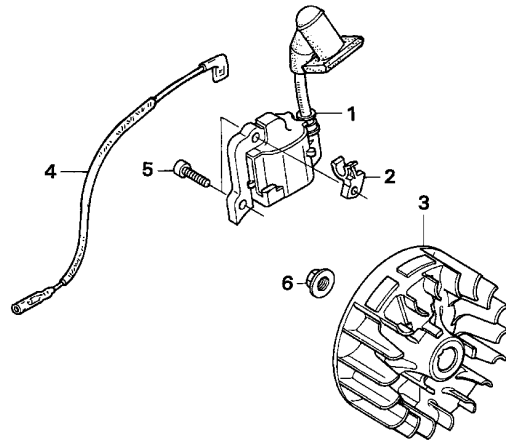
C11



Ref. No.	L.O.N.	(Relative ref. Number) Description	F.R.T.
1	3101J0	GROMMET, FUEL TUBE	0.2
2	(13)	TANK, FUEL	0.2
4	3101A9	GUARD, TANK	0.2
6	3101A6	FILTER, FUEL	0.2
7	3101F1	TUBE, FUEL TANK	0.2

Ref. No.	Part No.	Description	Reqd. QTY	Serial No.	Parts catalogue code
			GX 35 T		
1	17504-ZM3-003	GROMMET, FUEL TUBE	1		
2	17511-Z0Z-013	TANK, FUEL	1	-----	SATM,SAU,SAUT,SD,SD2,SD2S,SD2T,SDH,SDL,SDS,SDT,SGT3,SGT9,SJ,SJS,SJT,SKSKS,SMG,ST3E,ST4,SUT
3	17533-Z0H-000	RUBBER, TANK MOUNTING	4		
4	17555-Z0Z-000	GUARD, TANK	1	-----	SAUT,SD2T,SDT,SGT3,SGT9,SJT,ST3E,ST4,SUT
5	17620-ZM3-063	CAP ASSY., FUEL TANK	1	-----	SATM,SAU,SAUT,SD,SD2,SD2S,SD2T,SDH,SDL,SDS,SDT,SGT3,SGT9,SJ,SJS,SJT,SKSKS,SMG,ST3E,ST4,SUT
6	17672-Z0H-003	FILTER, FUEL	1		
7	17701-Z0Z-000	TUBE, FUEL TANK	1	-----	SATM,SAU,SAUT,SD,SD2,SD2S,SD2T,SDH,SDL,SDS,SDT,SGT3,SGT9,SJ,SJS,SJT,SKSKS,SMG,ST3E,ST4,SUT
8	17702-Z0Z-000	TUBE, FUEL RETURN	1	-----	SATM,SAU,SAUT,SD,SD2,SD2S,SD2T,SDH,SDL,SDS,SDT,SGT3,SGT9,SJ,SJS,SJT,SKSKS,SMG,ST3E,ST4,SUT
9	90010-Z0H-003	BOLT, SOCKET, 5X30	2	-----	SAUT,SD2T,SDT,SGT3,SGT9,SJT,ST3E,ST4,SUT
10	90018-Z0H-003	BOLT, SOCKET, 5X16	2	-----	SAUT,SD2T,SDT,SGT3,SGT9,SJT,ST3E,ST4,SUT
11	91401-ZM3-003	CLIP, TUBE	4	-----	SAMS,SAW,T4
			2	-----	SATM,SAU,SAUT,SD,SD2,SD2S,SD2T,SDH,SDL,SDS,SDT,SGT3,SGT9,SJ,SJS,SJT,SKSKS,SMG,ST3E,ST4,SUT
12	91501-Z0H-000	COLLAR, TANK GUARD	2	-----	SAUT,SD2T,SDT,SGT3,SGT9,SJT,ST3E,ST4,SUT
13	17511-Z6K-013	TANK, FUEL	1	-----	SAMS,SAW,T4
14	17519-ZM5-003	FITTING	2	-----	SAMS,SAW,T4
15	17620-Z0H-J72	CAP ASSY., FUEL TANK	1	-----	SAMS,SAW,T4
16	17701-Z6K-003	TUBE, FUEL	1	-----	SAMS,SAW,T4
17	17702-Z6K-003	TUBE, FUEL RETURN	1	-----	SAMS,SAW,T4
18	17703-Z6K-003	TUBE A, FUEL	1	-----	SAMS,SAW,T4

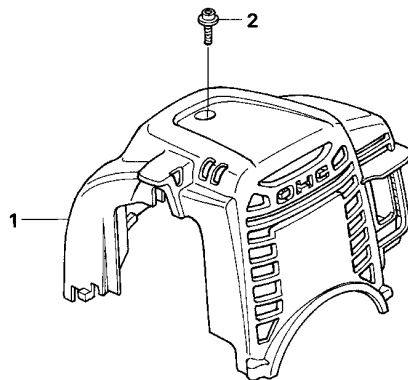
2



Z3F0-E1900

Ref. No.	L.O.N.	(Relative ref. Number) Description	F.R.T.
1	6141A5	COIL, IGNITION(ONE) .....	0.2
3	2161B5	FLYWHEEL .....	0.4
4	6111B3	CORD, STOP SWITCH .....	0.1

Ref. No.	Part No.	Description	Reqd. QTY		Serial No.	Parts catalogue code
			GX	T		
1	30500-Z3F-003	COIL ASSY., IGNITION .....	1	-----	-----	SAMS,SATM,SAU,SAUT,SD,SD2,SDL,SDS,SDT,SJ,SJS,SJT,SK,SKS,SMG,SUT
	30500-Z3F-013	.....	1	-----	-----	SAW,SD2S,SD2T,SDH,SGT3,SGT9,ST3E,ST4,T4
2	30522-Z3F-000	CLIP, HIGH TENSION CORD .....	1	-----	-----	
3	31110-Z3F-003	FLYWHEEL COMP. ....	1	-----	-----	
4	32195-Z0Z-000	CORD, STOP SWITCH .....	1	-----	-----	
5	90012-Z3E-003	BOLT, SOCKET, 4X14 .....	2	-----	-----	SAMS,SAW,SD2,SD2S,SD2T,SDH,SDL,SGT3,SGT9,SK,SKS,ST3E,ST4,T4
	90012-Z0H-005	.....	2	-----	1088910	SATM,SAU,SAUT,SD,SDS,SDT,SJ,SJS,SJT,SMG,SUT
	90012-Z3E-003	.....	2	-----	1088911	SATM,SAU,SAUT,SD,SDS,SDT,SJ,SJS,SJT,SMG,SUT
6	94050-08000	NUT, FLANGE, 8MM .....	1	-----	-----	



Z3F0-E2700 **FR.** →

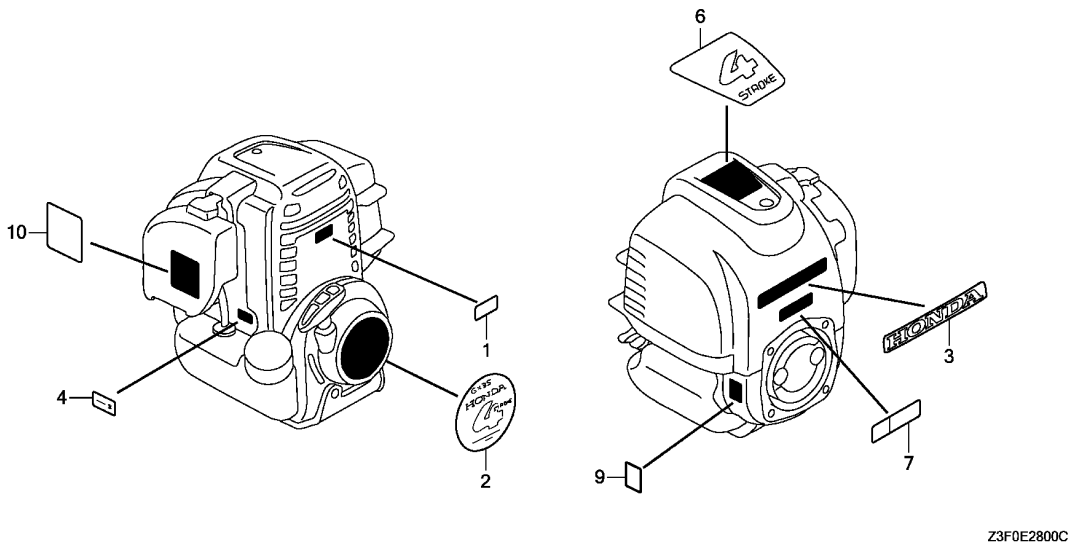
Ref. No.	L.O.N.	(Relative ref. Number) Description	F.R.T.
----------	--------	------------------------------------	--------

1	1111D6	COVER, ENGINE TOP .....	0.1
---	--------	-------------------------	-----

Ref. No.	Part No.	Description	Reqd. QTY	Serial No.	Parts catalogue code
			GX 35 T		
1	19720-Z3F-800ZA	COVER COMP., TOP	1	-----	SAMS, SATM, SAW, SMG, T4
	*R280*	.....POWER RED	1	-----	SAU, SAUT, SD, SD2, SD2S, SD2T, SDH, SDL, SDS, SDT, SJ, SJS, SJT, SK, SKS, ST4, SUT
	19720-Z0Z-000ZA	*R280*.....POWER RED	1	-----	SGT3
	19720-Z0Z-000ZB	*T92*.....STIGA YELLOW	1	-----	SGT9
	19720-Z0Z-000ZC	*T100*.....EMAK RED	1	-----	SKS
	19720-Z0Z-000ZE	*NH1*.....BLACK	1	-----	ST3E
	19720-Z0Z-000ZF	*T103*.....ELMOS BLUE	1	-----	
2	90015-Z0H-003	BOLT, TOP COVER .....	1		





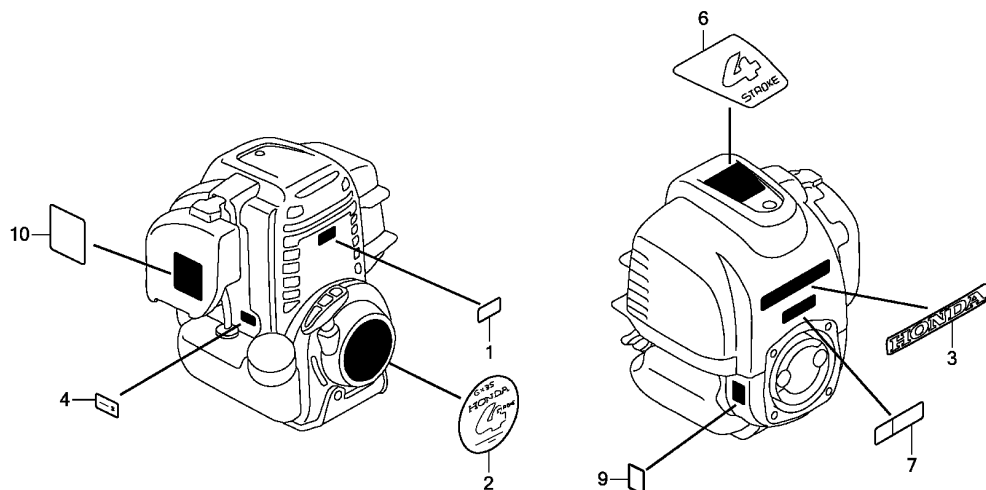


Ref. L.O.N. (Relative ref. Number) F.R.T.  
No. Description

NO INFORMATION .....

Z3F0E2800C

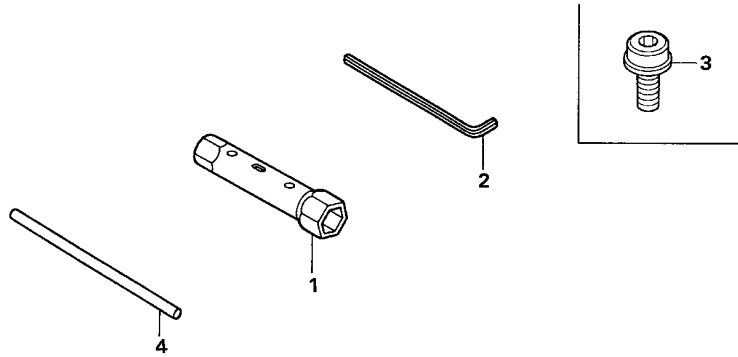
Ref. No.	Part No.	Description	Reqd. QTY	Serial No.	Parts catalogue code
			GX 35 T		
1	87114-ZH7-810	LABEL, WARNING (NOT CERTIFIED FOR SALE)	1	-----	SAMS, SATM, SAW
	87114-ZH7-000	.....	1	-----	SD, SD2, SD2S, SD2T, SDH, SDL, SDS, SDT, SJ, SJS, SJT, SK, SKS, SMG
2	87521-Z3F-000	MARK, EMBLEM	1	-----	SAMS, SAW, SD2, SD2S, SD2T, SDH, SDL, SGT3, ST3E, ST4, T4
	87521-Z3F-010	.....	1	1247375	SATM, SAU, SAUT, SD, SDS, SDT, SJ, SJS, SJT, SK, SKS, SMG, SUT
	87521-Z3F-010	.....	1	1247376	SATM, SAU, SAUT, SD, SDS, SDT, SJ, SJS, SJT, SK, SKS, SMG, SUT
3	87531-Z0Z-000	MARK, HONDA	1	-----	SAMS, SATM, SAU, SAUT, SAW, SD, SD2, SD2S, SD2T, SDH, SDL, SDS, SDT, SJ, SJS, SJT, SK, SKS, SMG, SUT, T4
4	87601-Z3F-V50	MARK, TYPE(SAMS)	1	-----	SAMS
	87601-ZM5-V60	MARK, TYPE(SATM)	1	-----	SATM
	87601-Z0H-870	MARK, TYPE(SAU)	1	-----	SAU
	87601-Z0H-880	MARK, TYPE(SAUT)	1	-----	SAUT
	87601-Z3F-V90	MARK, TYPE(SAW)	1	-----	SAW
	87601-Z0H-890	MARK, TYPE(SD)	1	-----	SD
	87601-Z3E-840	MARK, TYPE(SD2)	1	-----	SD2
	87601-Z3F-820	MARK, TYPE(SD2S)	1	-----	SD2S
	87601-Z3F-830	MARK, TYPE(SD2T)	1	-----	SD2T
	87601-Z3F-810	MARK, TYPE(SDH)	1	-----	SDH
	87601-Z3F-V80	MARK, TYPE(SDL)	1	-----	SDL
	87601-Z0Z-V20	MARK, TYPE(SDS)	1	-----	SDS
	87601-Z0H-900	MARK, TYPE(SDT)	1	-----	SDT
	87601-Z4A-820	MARK, TYPE(SGT3)	1	-----	SGT3
	87601-Z4A-850	MARK, TYPE(SGT9)	1	-----	SGT9
	87601-Z0H-800	MARK, TYPE(SJ)	1	-----	SJ
	87601-Z0H-940	MARK, TYPE(SJS)	1	-----	SJS
	87601-Z0H-810	MARK, TYPE(SJT)	1	-----	SJT
	87601-Z3E-800	MARK, TYPE(SK)	1	-----	SK
	87601-Z3F-800	MARK, TYPE(SKS)	1	-----	SKS
	87601-ZM3-U40	MARK, TYPE(SMG)	1	-----	SMG



Z3F0E2800C

Ref. No.	Part No.	Description	Reqd. QTY		Serial No.	Parts catalogue code
			GX	T		
(4)	87601-Z4A-860	MARK, TYPE(ST3E)	1	-----	-----	ST3E
	87601-Z3E-870	MARK, TYPE(ST4)	1	-----	-----	ST4
	87601-Z0H-950	MARK, TYPE(SUT)	1	-----	-----	SUT
	87601-Z4A-880	MARK, TYPE(T4)	1	-----	-----	T4
6	87660-Z0Z-000	MARK(4-STROKE)	1	-----	-----	SAMS,SATM,SAU,SAUT,SAW,SD,SD2,SD2S,SD2T,SDH,SDL,SDS,SDT,SGT3,SJ,SJS,SJT SK,SKS,SMG,ST3E,ST4,T4
	87660-Z0Z-J00	-----	1	-----	-----	SUT
7	87522-ZK6-800	LABEL, CAUTION	1	-----	-----	SDH,SDL
9	87114-ZH7-840	LABEL, WARNING (NOT CERTIFIED FOR SALE)	1	-----	-----	SGT3,SGT9,ST3E,ST4,T4
10	87519-Z6J-000	MARK, OPERATOR CAUTION (PICTOGRAPH)	1	-----	-----	SGT3,SGT9,ST3E,ST4,T4



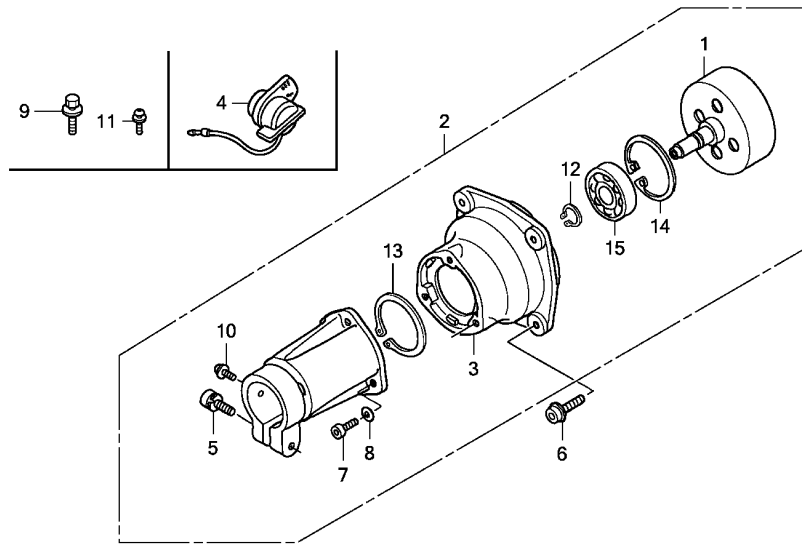


Z3F0-E2900

Ref. (Relative ref. Number)  
No. L.O.N. Description F.R.T.

NO INFORMATION .....

Ref. No.	Part No.	Description	Reqd. QTY	Serial No.	Parts catalogue code
			GX 35 T		
1	89216-VJ3-J10	WRENCH, PLUG(16X19) .....	(1)		
2	89221-KW3-000	WRENCH, HEX., 4MM .....	(1)		
3	90011-ZOH-811	BOLT, SOCKET, 5X9 .....	(1)	-----	SAMS,SATM,SAU,SAUT,SAW,SD,SD2,SD2S,SD2T,SDH,SDL,SDS,SDT,SGT3,SGT9,SJ,SJS SJT,SK,SKS,SMG,ST3E,ST4,T4
4	99005-01000	BAR A, HANDLE .....	1 (1)	-----	SUT



Z3F0E4000

Ref. No.	L.O.N.	(Relative ref. Number) Description	F.R.T.
1	2121C0	OUTER, CLUTCH .....	0.2
2	2121E8	HOUSING ASSEMBLY, CLUTCH .....	0.1
3	2121B6	HOUSING, CLUTCH .....	0.3
15	2121E7	BEARING, CLUTCH OUTER .....	0.3

Ref. No.	Part No.	Description	Reqd. QTY	Serial No.	Parts catalogue code
			GX 35 T		
1	22100-VK4-M00	OUTER COMP., CLUTCH .....	1	-----	SAMS
2	22260-VK4-M01	HOUSING ASSY., CLUTCH .....	1	-----	SAMS
3	22261-VK4-003	HOUSING, CLUTCH .....	1	-----	SAMS
4	36100-ZE1-015	SWITCH ASSY., ENGINE STOP ...	1	-----	SAMS
5	90101-VK4-003	BOLT, SOCKET, 6X20 .....	1	-----	SAMS
6	90102-VK4-000	BOLT, FLANGE SOCKET, 6X20 ...	4	-----	SAMS
7	90103-VK4-003	BOLT, SOCKET, 5X20 .....	3	-----	SAMS
8	90401-VK4-003	WASHER, 5MM .....	3	-----	SAMS
9	93403-06028-08	BOLT-WASHER, 6X28 .....	1	-----	SAMS
10	93892-05010-07	SCREW-WASHER, 5X10 .....	1	-----	SAMS
11	93893-05010-08	SCREW-WASHER, 5X10 .....	1	-----	SAMS
12	94510-15000	CIRCLIP, EXTERNAL, 15MM .....	1	-----	SAMS
13	94510-30000	CIRCLIP, EXTERNAL, 30MM .....	1	-----	SAMS
14	94520-35000	CIRCLIP, INTERNAL, 35MM .....	1	-----	SAMS
15	96130-62020-10	BEARING, RADIAL BALL, 6202 ..	1	-----	SAMS



# PART NO. INDEX

E 1

Part Number	Address	Page	Ref.	Part Number	Address	Page	Ref.	Part Number	Address	Page	Ref.	Part Number	Address	Page	Ref.	Part Number	Address	Page	Ref.
10000				16023-ZM3-004	C7	23	12	19720-Z0Z-000ZC	C13	29	1	87522-ZK6-800	C15	31	7				
				16024-Z0H-003	C7	23	13	19720-Z0Z-000ZE	C13	29	1	87531-Z0Z-000	C14	30	3				
10100-Z3F-405	C1	17	1	16025-ZM3-004	C7	23	14	19720-Z0Z-000ZF	C13	29	1	87601-Z0H-800	C14	30	4	90019-Z0H-003	C2	18	21
				16026-ZM3-004	C7	23	15	19720-Z3F-800ZA	C13	29	1	87601-Z0H-810	C14	30	4	90043-Z0H-000	C5	21	13
12000				16027-ZM3-004	C7	23	16					87601-Z0H-870	C14	30	4	90055-ZE1-000	C10	26	8
				16028-ZM3-004	C7	23	17	22000				87601-Z0H-880	C14	30	4	90101-VK4-003	D1	33	5
12209-Z3E-000	C4	20	1	16029-ZM3-004	C7	23	18					87601-Z0H-890	C14	30	4	90102-VK4-000	D1	33	6
12209-Z3E-003	C4	20	1	16030-ZM3-004	C7	23	19	22000-Z0Z-003	C6	22	2	87601-Z0H-900	C14	30	4	90103-VK4-003	D1	33	7
12310-Z0Z-000	C1	17	2	16031-ZM3-004	C7	23	20	22100-VK4-M00	D1	33	1	87601-Z0H-940	C14	30	4	90136-SM4-901	C10	26	9
12312-Z0Z-300	C1	17	3	16032-ZM3-004	C7	23	21	22253-Z3F-000	C6	22	3	87601-Z0H-950	C15	31	4	90206-ZM3-000	C2	18	22
12314-Z0H-300	C1	17	4	16035-ZM3-802	C7	23	22	22254-Z3F-000	C6	22	4	87601-Z0Z-V20	C14	30	4	90401-VK4-003	D1	33	8
12367-Z0H-000	C1	17	5	16100-Z0Z-804	C8	24	23	22255-Z3F-000	C6	22	5	87601-Z3E-800	C14	30	4				
				16100-Z0Z-805	C8	24	23	22260-VK4-M01	D1	33	2	87601-Z3E-840	C14	30	4	91000			
13000				16100-Z0Z-814	C7	23	23	22261-VK4-003	D1	33	3	87601-Z3E-870	C15	31	4				
				16100-Z0Z-815	C7	23	23					87601-Z3F-800	C14	30	4	91212-Z3E-000	C3	19	5
13010-ZM5-000	C3	19	1	16100-Z3F-842	C7	23	23	28000				87601-Z3F-810	C14	30	4	91212-Z3E-003	C3	19	5
13101-Z0Z-000	C3	19	2	16100-Z3F-852	C8	24	23	28400-Z0Z-003	C5	21	1	87601-Z3F-820	C14	30	4	91214-Z3F-000	C3	19	6
13101-Z0Z-010	C3	19	2	16100-Z3F-853	C8	24	23	28414-Z0Z-000	C5	21	2	87601-Z3F-830	C14	30	4	91214-Z3F-003	C3	19	6
13111-ZM5-000	C3	19	3	16100-Z6K-014	C8	24	23	28421-ZM3-003	C5	21	3	87601-Z0H-950	C14	30	4	91301-ZM3-000	C8	24	28
13310-Z0Z-000	C3	19	4	16221-Z0Z-000	C8	24	24	28433-ZM3-003	C5	21	4	87601-Z3F-V80	C14	30	4	91308-Z3E-000	C8	24	29
13310-Z0Z-010	C3	19	4					28442-Z0H-003	C5	21	5	87601-Z3F-V90	C14	30	4	91401-ZM3-003	C11	27	11
13310-Z0Z-305	C3	19	7	17000				28451-Z0H-003	C5	21	6	87601-Z4A-820	C14	30	4	91501-Z0H-000	C11	27	12
								28459-Z0H-003	C5	21	7	87601-Z4A-850	C14	30	4	91501-Z0Z-000	C9	25	7
14000				17211-Z0Z-000	C9	25	1	28461-ZM3-003	C5	21	8	87601-Z4A-860	C15	31	4	91503-ZM3-000	C9	25	8
				17220-Z0Z-000	C9	25	2	28462-ZM3-003	C5	21	9	87601-Z4A-880	C15	31	4	91504-ZM3-003	C5	21	14
14126-Z0Z-003	C4	20	2	17231-Z0Z-000	C9	25	3					87601-ZM3-U40	C14	30	4	91506-ZM3-000	C5	21	15
14320-Z0Z-000	C4	20	3	17231-Z0Z-010	C9	25	3	30000				87601-ZM5-V60	C14	30	4				
14400-Z0Z-003	C4	20	4	17504-ZM3-003	C11	27	1					87660-Z0Z-000	C15	31	6				
14400-Z3F-003	C4	20	4	17511-Z0Z-013	C11	27	2	30500-Z3F-003	C12	28	1	87660-Z0Z-J00	C15	31	6	93000			
14431-Z0H-003	C1	17	6	17511-Z6K-013	C11	27	13	30500-Z3F-013	C12	28	1					93403-06028-08	D1	33	9
14441-Z0H-003	C1	17	7	17519-ZM5-003	C11	27	14	30522-Z3F-000	C12	28	2	89000				93892-05010-07	D1	33	10
14711-Z0Z-800	C4	20	5	17533-Z0H-000	C11	27	3					89216-VJ3-J10	C16	32	1	93893-05010-08	D1	33	11
14721-Z0Z-800	C4	20	6	17555-Z0Z-000	C11	27	4	31000				89221-KW3-000	C16	32	2				
14730-Z0Z-000	C1	17	8	17620-Z0H-J72	C11	27	15									94000			
14740-Z0Z-000	C1	17	9	17620-ZM3-063	C11	27	5	31110-Z3F-003	C12	28	3	90000							
14751-Z0Z-000	C4	20	7	17672-Z0H-003	C11	27	6	31914-Z0H-003	C1	17	15	90001-Z0Z-013	C10	26	6	94050-05000	C9	25	6
14771-Z0H-000	C4	20	8	17701-Z0Z-000	C11	27	7	31914-Z0H-801	C1	17	15	90009-Z0H-003	C1	17	16	94050-08000	C12	28	6
				17701-Z6K-003	C11	27	16	31915-Z0H-003	C1	17	15					94305-40102	C2	18	23
15000				17702-Z0Z-000	C11	27	8	31915-Z0H-801	C1	17	15	90009-Z0Z-003	C9	25	4	94510-15000	D1	33	12
				17702-Z6K-003	C11	27	17	31916-Z0H-003	C1	17	15	90010-Z0H-003	C11	27	9	94510-30000	D1	33	13
15422-Z0Z-000	C1	17	10	17703-Z6K-003	C11	27	18	32000				90010-Z0Z-003	C1	17	17	94520-35000	D1	33	14
15510-Z3E-000	C1	17	11									90011-Z0H-811	C16	32	3				
15600-Z3F-000	C1	17	12	18000				32195-Z0Z-000	C12	28	4	90012-Z0H-005	C12	28	5	95000			
15625-Z0T-800	C1	17	13									90012-Z3E-003	C12	28	5	95002-41200-08	C2	18	24
15721-Z0Z-000	C1	17	14	18310-Z0Z-010	C10	26	1	36000				90012-ZM3-003	C5	21	10	95002-41300-04	C2	18	25
				18310-Z0Z-801	C10	26	1					90013-Z0H-004	C2	18	18				
16010-ZM3-004	C7	23	1	18310-Z3F-820	C10	26	1	36100-ZE1-015	D1	33	4	90013-Z0Z-003	C2	18	19				
16011-Z0H-013	C7	23	2	18310-Z3F-830	C10	26	1					90013-Z0Z-003	C2	18	19	96000			
16013-Z0H-003	C7	23	3	18350-Z0Z-800	C10	26	2	87000				90013-Z3E-003	C2	18	18				
16014-ZM3-004	C7	23	4	18354-Z0Z-800	C10	26	3					90014-Z0H-003	C8	24	26	96130-62020-10	D1	33	15
16015-Z0H-013	C7	23	5	18515-Z0Z-300	C10	26	4					90015-Z0H-003	C13	29	2				
16017-ZM3-004	C7	23	6	18518-Z0Z-020	C10	26	5	19000				90017-Z0H-000	C2	18	20	99000			
16018-ZM3-802	C7	23	7					87114-ZH7-000	C14	30	1	90018-Z0H-003	C5	21	11	99005-01000	C16	32	4
16019-ZM3-004	C7	23	8					87114-ZH7-810	C14	30	1					99101-Z0Z-0360	C8	24	30
16020-ZM3-004	C7	23	9	19611-Z0Z-000	C6	22	1	87114-ZH7-840	C15	31	9					99101-Z0Z-0370	C8	24	30
16021-ZM3-004	C7	23	10	19631-Z0Z-010	C8	24	25	87519-Z6J-000	C15	31	10					99101-Z0Z-0380	C8	24	30
16022-ZM3-014	C7	23	11	19720-Z0Z-000ZA	C13	29	1	87521-Z3F-000	C14	30	2								
				19720-Z0Z-000ZB	C13	29	1	87521-Z3F-010	C14	30	2								

# PART NO. INDEX

**E 2**

Part Number	Address	Page	Ref.	Part Number	Address	Page	Ref.	Part Number	Address	Page	Ref.	Part Number	Address	Page	Ref.
99101-ZM5-0330	C8	24	30												
99101-ZM5-0340	C8	24	30												
99101-ZM5-0350	C8	24	30												

**3**

# PART NAME INDEX

Part name	Address	Page	Ref.	Part name	Address	Page	Ref.	Part name	Address	Page	Ref.
[ A ]				COLLAR A, HEAD COVER .....	C10	26	10	LABEL, WARNING .....	C14	30	1
ARM, EX. VALVE ROCKER .....	C1	17	7	COLLAR, AIR CLEANER .....	C9	25	8		C15	31	9
ARM, IN. VALVE ROCKER .....	C1	17	6	COLLAR, AIR CLEANER CASE .....	C9	25	7	LEVER, METERING .....	C7	23	12
ARM, SWING .....	C5	21	7	COLLAR, TANK GUARD .....	C11	27	12	LIFTER COMP., EX. VALVE .....	C1	17	9
ARRESTER COMP., SPARK .....	C10	26	2	CORD, STOP SWITCH .....	C12	28	4	LIFTER COMP., IN. VALVE .....	C1	17	8
[ B ]				COVER COMP., TOP .....	C13	29	1	[ M ]			
BAR A, HANDLE .....	C16	32	4	COVER, AIR CLEANER .....	C9	25	3	MARK .....	C15	31	6
BEARING, RADIAL BALL, 6202 ...	D1	33	15	COVER, CYLINDER HEAD .....	C1	17	2	MARK, EMBLEM .....	C14	30	2
BELT, TIMING .....	C4	20	4	COVER, FAN .....	C6	22	1	MARK, HONDA .....	C14	30	3
BODY ASSY., AIR PURGE .....	C7	23	6	COVER, PRIMER PUMP .....	C7	23	15	MARK, OPERATOR CAUTION .....	C15	31	10
BODY ASSY., PUMP .....	C7	23	5	CRANKCASE SET .....	C1	17	1	MARK, TYPE .....	C14	30	4
BOLT-WASHER, 6X28 .....	D1	33	9	CRANKSHAFT COMP. ....	C3	19	4		C15	31	4
BOLT, 5X53 .....	C8	24	26	[ D ]				MUFFLER COMP. ....	C10	26	1
BOLT, CLUTCH .....	C6	22	3	DIAPHRAGM ASSY., METERING .....	C7	23	3	[ N ]			
BOLT, FLANGE SOCKET, 6X20 ...	D1	33	6	DIAPHRAGM, PUMP .....	C7	23	4	NUT, FLANGE, 5MM .....	C9	25	6
BOLT, SOCKET, 4X14 .....	C12	28	5	[ E ]				NUT, FLANGE, 8MM .....	C12	28	6
BOLT, SOCKET, 5X12 .....	C2	18	21	ELEMENT, AIR CLEANER .....	C9	25	1	NUT, SELF-LOCK, 5MM .....	C10	26	9
BOLT, SOCKET, 5X16 .....	C5	21	11	[ F ]				NUT, TAPPET ADJUSTING .....	C2	18	22
	C8	24	27	FILTER, BREATHER .....	C1	17	5	[ O ]			
	C9	25	5	FILTER, EXHAUST .....	C10	26	3	OIL SEAL, 10X20X5 .....	C3	19	5
	C10	26	7	FILTER, FUEL .....	C11	27	6	OIL SEAL, 15X25X6 .....	C3	19	6
	C11	27	10	FILTER, FUEL INLET .....	C7	23	22	O-RING .....	C7	23	14
BOLT, SOCKET, 5X20 .....	C1	17	16	FITTING .....	C11	27	14	O-RING, 12.3X2.4 .....	C8	24	29
	C6	22	6	FLYWHEEL COMP. ....	C12	28	3	O-RING, 14.8X2.4 .....	C8	24	28
	D1	33	7	[ G ]				OUTER COMP., CLUTCH .....	D1	33	1
BOLT, SOCKET, 5X25 .....	C9	25	4	GASKET, METERING DIAPHRAGM .....	C7	23	1	[ P ]			
BOLT, SOCKET, 5X30 .....	C11	27	9	GASKET, PUMP .....	C7	23	2	PACKING, CARBURETOR .....	C8	24	24
BOLT, SOCKET, 5X32 .....	C1	17	17	GROMMET, FUEL TUBE .....	C11	27	1	PACKING, OIL FILLER CAP .....	C1	17	13
BOLT, SOCKET, 5X9 .....	C16	32	3	GROMMET, HEAD COVER .....	C1	17	4	PIN, METERING LEVER .....	C7	23	11
BOLT, SOCKET, 6X20 .....	D1	33	5	GUARD, TANK .....	C11	27	4	PIN, PISTON .....	C3	19	3
BOLT, STUD, 5X56.5 .....	C10	26	6	GUIDE COMP., UNDER AIR .....	C10	26	5	PIN, SPRING, 4X10 .....	C2	18	23
BOLT, STUD, B .....	C5	21	13	GUIDE, AIR .....	C10	26	4	PISTON .....	C3	19	2
BOLT, TOP COVER .....	C13	29	2	GUIDE, ROPE .....	C5	21	4	PLATE ASSY., OIL OUTLET VALVE .....	C1	17	11
[ C ]				[ H ]				PLUG, SPARK .....	C1	17	15
CAP ASSY., FUEL TANK .....	C11	27	5	HOUSING ASSY., CLUTCH .....	D1	33	2	PULLEY COMP., CAMSHAFT .....	C4	20	3
			15	HOUSING, CLUTCH .....	D1	33	3	PULLEY, RECOIL STARTER .....	C5	21	6
CAP ASSY., OIL FILLER .....	C1	17	12	[ J ]				PUMP, PRIMER .....	C7	23	21
CARBURETOR ASSY. ....	C7	23	23	JET .....	C8	24	30	[ R ]			
	C8	24	23	[ K ]				REEL, RECOIL STARTER .....	C5	21	3
CASE COMP., AIR CLEANER .....	C9	25	2	KNOB, RECOIL STARTER .....	C5	21	8	RETAINER, VALVE SPRING .....	C4	20	8
CASE, RECOIL STARTER .....	C5	21	2	[ L ]				RING SET, PISTON .....	C3	19	1
CIRCLIP, EXTERNAL, 15MM .....	D1	33	12	LABEL, CAUTION .....	C15	31	7	RING, RETAINING .....	C7	23	13
CIRCLIP, EXTERNAL, 30MM .....	D1	33	13	[ S ]				ROLLER, 4X31.8 .....	C4	20	2
CIRCLIP, INTERNAL, 35MM .....	D1	33	14	SCREEN, INLET .....	C7	23	7	ROPE, RECOIL STARTER .....	C5	21	9
CLAMP, TUBE .....	C2	18	24	[ A-Z ]				RUBBER, TANK MOUNTING .....	C11	27	3
CLIP, HIGH TENSION CORD .....	C12	28	2	[ END ]							
CLIP, TUBE .....	C11	27	11								
CLUTCH ASSY. ....	C6	22	2								
COIL ASSY., IGNITION .....	C12	28	1								
COLLAR .....	C5	21	14								
COLLAR A, HEAD COVER .....	C5	21	15								
	C9	25	9								

# PART NAME INDEX

F 2

Part name	Address	Page	Ref.	Part name	Address	Page	Ref.	Part name	Address	Page	Ref.
SCREW-WASHER, 5X10 .....	D1	33	10								
			11								
SCREW, METERING LEVER PIN .....	C7	23	10								
SCREW, PAN, 4X8 .....	C1	17	18								
	C2	18	18								
			19								
SCREW, PUMP COVER .....	C7	23	18								
SCREW, SETTING .....	C5	21	10								
SCREW, TAPPET ADJUSTING .....	C2	18	20								
SCREW, TAPPING, 4X6 .....	C10	26	8								
SCREW, THROTTLE COLLAR .....	C7	23	17								
SEAL, HEAD COVER .....	C1	17	3								
SEAL, VALVE STEM .....	C4	20	1								
SHROUD .....	C8	24	25								
SPRING, METERING LEVER .....	C7	23	9								
SPRING, PUMP .....	C7	23	19								
SPRING, RECOIL STARTER .....	C5	21	5								
SPRING, VALVE .....	C4	20	7								
STARTER ASSY., RECOIL .....	C5	21	1								
SWITCH ASSY., ENGINE STOP .....	D1	33	4								
SWIVEL .....	C7	23	16								
[ T ]											
TANK, FUEL .....	C11	27	2								
			13								
TUBE A, FUEL .....	C11	27	18								
TUBE, BREATHER .....	C1	17	14								
TUBE, FUEL .....	C11	27	16								
TUBE, FUEL RETURN .....	C11	27	8								
			17								
TUBE, FUEL TANK .....	C11	27	7								
TUBE, OIL .....	C1	17	10								
[ V ]											
VALVE, EX. ....	C4	20	6								
VALVE, INLET NEEDLE .....	C7	23	8								
VALVE, IN. ....	C4	20	5								
[ W ]											
WASHER .....	C7	23	20								
WASHER, 5MM .....	D1	33	8								
WASHER, CLUTCH .....	C6	22	4								
WASHER, WAVE .....	C6	22	5								
WRENCH, HEX., 4MM .....	C16	32	2								
WRENCH, PLUG .....	C16	32	1								



---

**1**

**FOREWORD INDEX**

---

**2**

**ENGINE GROUP**

---

**3**

**PART NUMBER INDEX**

---

**4**

**PART NAME INDEX**

---

**HONDA**  
The Power of Dreams

December 18, 2011



---

## PARTS CATALOGUE NEWS

---

Honda Motor Co., Ltd.  
Customer Service Technology Development Division

Printed in Japan

CODE NO.	13Z3F602
PARTS CATALOGUE NEWS	GX35T
NEWS NO.	001

### **GX35T-SDC,SDSC,SDTC and SUTC types sales information**

NOTE: This Parts Catalogue News explains only the parts of the different model that are produced to conform to addition of the GX35T-SDC,SDSC,SDTC and SUTC types.

As for the parts not listed on this Parts Catalogue News, use the parts of the GX35T-SD,SDS,SDT and SUT types.

BOOKNo. : 13Z3F602

• **Models, parts catalogue codes and applicable serial numbers**

Model	Type		Parts catalogue type	Applicable engine serial No.	Applicable carburetor identification No.
GX35T	SD	Base type	SD	GCAMT-1000001~	WYB 14B
	SDC	Additional type	SDC		WYB 14D
	SDS	Base type	SDS		WYB 14B
	SDSC	Additional type	SDSC		WYB 14D
	SDT	Base type	SDT		WYB 14B
	SDTC	Additional type	SDTC		WYB 14D
	SUT	Base type	SUT		WYB 15B/D
	SUTC	Additional type	SUTC		WYB 15D

• Features of each type		Base type	Additional type	Base type	Additional type	Base type	Additional type	Base type	Additional type
Specifications	Model	GX35T							
	Type	SD	SDC	SDS	SDSC	SDT	SDTC	SUT	SUTC
	Tank guard					●	●	●	●

## PARTS CATALOGUE NEWS

BOOKNo. : 13Z3F602

Block No.	Ref. No.	Part No.	Description	Reqd. QTY		Base Part No.	Parts catalogue code
				GX 35 T			
E-7	2	13101-Z0Z-010	PISTON.....	1		13101-Z0Z-000	SDC, SDSC, SDTC, SUTC
	4	13310-Z0Z-010	CRANKSHAFT COMP.....	1		13310-Z0Z-000	SDC, SDSC, SDTC, SUTC
E-10	4	14400-Z3F-013	BELT, TIMING (76ZU6 G-310).....	1		14400-Z3F-003	SDC, SDSC, SDTC, SUTC
E-14	23	16100-Z0Z-815	CARBURETOR ASSY. (WYB 14D).....	1		16100-Z0Z-814	SDC, SDSC, SDTC
E-15	3	17231-Z0Z-010	COVER, AIR CLEANER.....	1		17231-Z0Z-000	SDC, SDSC, SDTC, SUTC
E-19	1	30500-Z3F-013	COIL ASSY., IGNITION.....	1		30500-Z3F-003	SDC, SDSC, SDTC, SUTC
E-28	1	87114-ZH7-810	LABEL, WARNING (NOT CERTIFIED FOR SALE)	1			SUTC
	3		MARK, HONDA.....	0		87531-Z0Z-000	SDC, SDTC, SUTC
	10	87519-Z6J-000	MARK, OPERATOR CAUTION (PICTOGRAPH)	1			SDC, SDSC, SDTC, SUTC



# PARTS CATALOGUE NEWS

Honda Motor Co., Ltd.  
Customer Service Technology Development Division

## PARTS CATALOGUE - CORRECTED

Printed in Japan

CODE NO.	13Z3F602
PARTS CATALOGUE NEWS	GX35T
NEWS NO.	002

Block No.	Ref. No.	Note	Part No.	Description	Reqd. QTY	Serial No.		Parts catalogue code
					GX 35 T			
E-17	13	T	17511-Z6K-013	TANK, FUEL.....	1	-----	-----	SAMS, SAW
		A	17511-Z6K-023	.....	1	-----	-----	T4

NOTE A:PART NO. CHANGE D:NEWLY PROVIDED E:PART NO. DELETION K:REQUIRED NO. CORRECTION L:APPLICATION SERIAL NO. CORRECTION  
M:PART DESCRIPTION CORRECTION T:APPLICATION CORRECTION Z:REMARKS CHANGE