



# SPARE PARTS MANUAL

## FLEXTOOL SINGLE HEAD CONCRETE GRINDER FCG-250



Version 1.0 (May 2024)

FOR MORE INFORMATION VISIT [flextool.com.au](https://flextool.com.au)

## HOW TO READ THIS SPARE PARTS MANUAL

The following section explains the different symbols and remarks used in this manual and how to interpret the information outlined in the following pages.

### Section 1 – Diagram and parts list

- Item No : Used to reference the spare part in the diagram to the parts list.
- Product Code : Used to indicate the unique Flextool spare parts product code used when ordering parts.

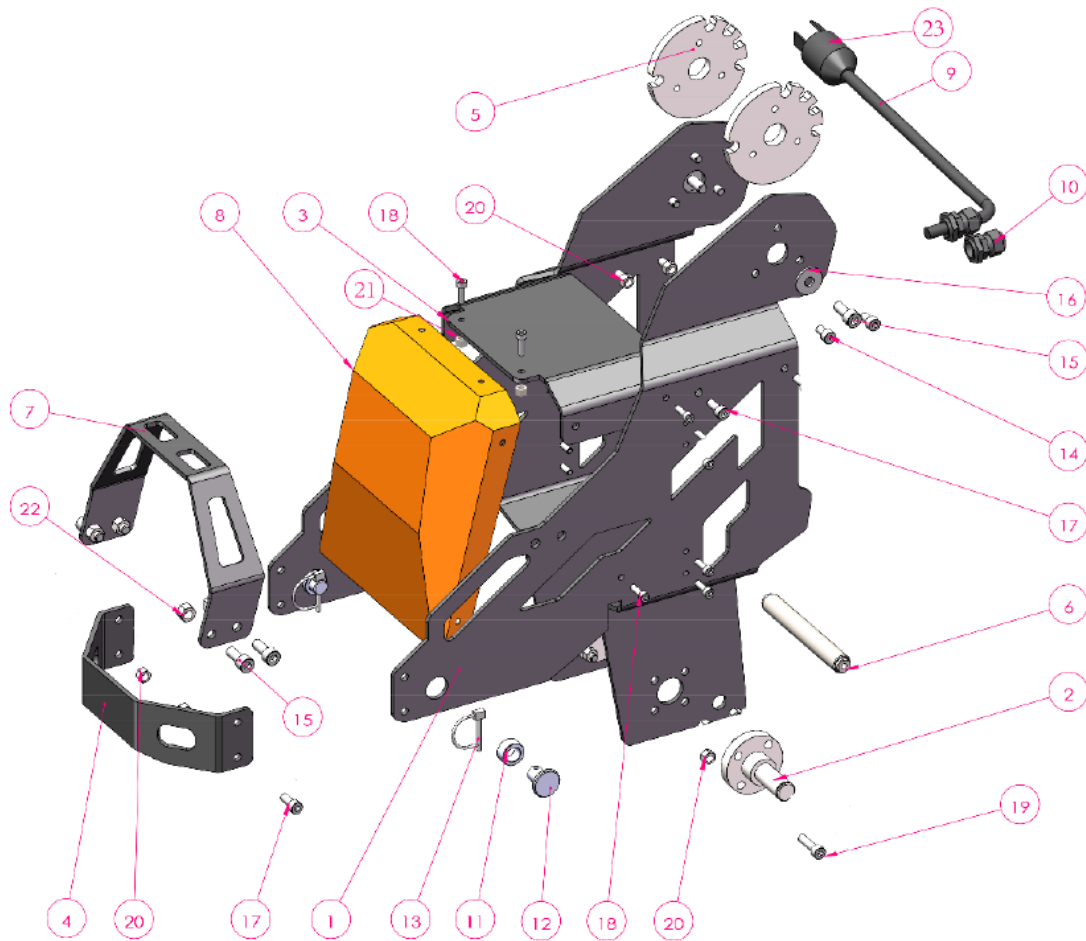
Product code can be presented in the following ways:

- Number : Signifies the unique Flextool spare parts product code used when placing orders.
  - Blank : Used for parts pending formal part number assignment at the time of publication. Also denotes that the spare parts are not sold separately or are unavailable from Flextool.
  - See remarks : Indicates that the spare parts are part of an assembly, service kit or is part of a serial number range where a particular part is used. Please refer to remarks to find further information.
- Description : Used to provide a concise description of the spare part such as size, length, diameter, models, etc.
  - Qty : Indicates the quantity of part(s) required for the equipment. Please verify the required quantity when placing an order.
  - Remarks : Refers to additional information, including assembly kit, service kit and serial number range where particular part is used
    - AS : Refers to the parts supplied with an assembly kit.
    - SK : Refers to the parts supplied with a service kit.
    - Serial number: Indicates the range of serial number where particular part is used.

### Section 2 – Fast moving spare parts

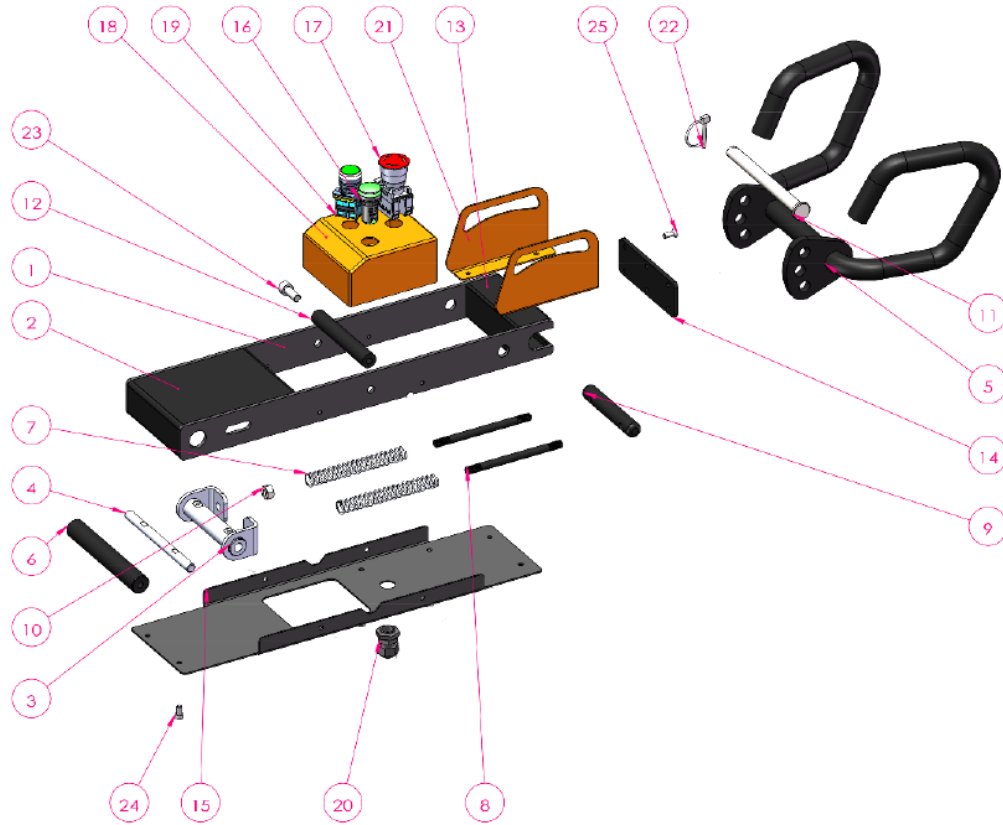
#### FLEXTOOL SINGLE HEAD CONCRETE GRINDER FCG-250

Description	Product Code
FLX BOLT SET	NPS02548-UNIT
FLX START SWITCH	NPS01771-UNIT
FLX STOP SWITCH	NPS01770-UNIT
FLX POWER INDICATOR	NPS01769-UNIT
FLX LATCH PIN	NPS02511-UNIT



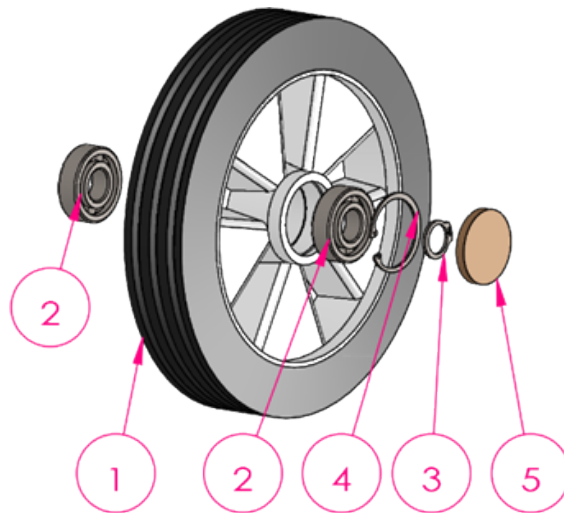
Frame (FCG-250)

Item No.	Product Code	Description	Qty	Remarks
1	NPS02552-UNIT	FLX SIDE PANEL (SJI-24311-3)	1	
2	NPS01717-UNIT	FLX AXLE (SJI-23510-15)	2	
3	NPS02553-UNIT	FLX UPPER COVER (SJI-24311-13)	1	
4	NPS02541-UNIT	FLX FRONT FRAME (SJI-24311-12)	1	
5	NPS02549-UNIT	FLX HANDLE ADJUSTING DISC (SJI-24311-4)	2	
6	NPS02547-UNIT	FLX ROD (SJI-24311-14)	1	
7	NPS02555-UNIT	FLX LIFT PANEL (SJI-24311-15)	1	
8	NPS02556-UNIT	FLX FRONT PANEL (SJI-24311-16)	1	
9	NPS01889-UNIT	FLX SIGNAL CORD 1.5M (SJI-23510-400)	1	
10	NPS01731-UNIT	FLX BELLOWS CONNECTOR (SJI-23510-27)	2	
11	NPS02548-UNIT	FLX BOLT SET (SJI-24311-17)	2	
12	NPS02551-UNIT	FLX SHAFT SET (SJI-24311-18)	2	
13	NPS02511-UNIT	FLX LOCK PIN (SJI-24311-1)	2	
14	NPS02575-UNIT	FLX HEX SCREW M8X14 (SJI-24311-19)	6	
15	NPS01842-UNIT	FLX HEX BOLT M10X25 (SJI-24311-2)	6	
16	NPS02576-UNIT	FLX WASHER M10 (SJI-24311-20)	2	
17	NPS01746-UNIT	FLX HEX SOCKET HEAD CAP SCREW M8X20 (SJI-23510-303)	9	
18	NPS01751-UNIT	FLX HEX SOCKET HEAD CAP SCREW M6X20 (SJI-23510-301)	18	
19	NPS02574-UNIT	FLX HEX SOCKET HEAD SCREW M8X30 (SJI-24311-24)	8	
20	NPS00406-UNIT	FLX LOCK NUT M8 (SJI-24311-25)	18	
21	NPS07279-UNIT	FLX LOCK NUT M6 (SJI-24311-26)	2	
22	NPS07248-UNIT	FLX LOCK NUT M10 (SJI-24311-27)	4	
23	NPS01737-UNIT	FLX PLUG (SJI-23510-33)	1	



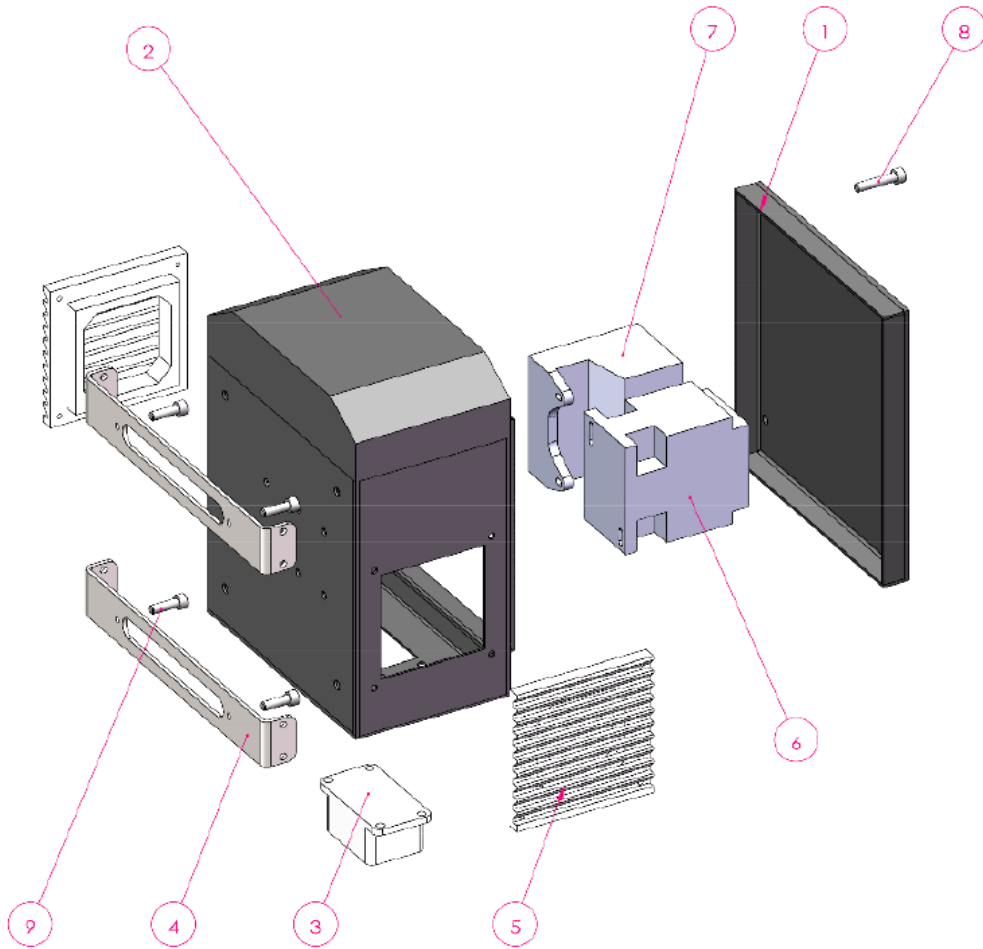
Handle (FCG-250)

Item No.	Product Code	Description	Qty	Remarks
1	NPS02577-UNIT	FLX CONTROL FRAME (SJI-24311-28)	1	
2	NPS02578-UNIT	FLX CONTROL FRAME 250 COVER (SJI-24311-29)	1	
3	NPS02579-UNIT	FLX HANDLE CONNECTING ROD (SJI-24311-30)	1	
4	NPS02580-UNIT	FLX ROD (SJI-24311-31)	1	
5	NPS02581-UNIT	FLX HANDLE (SJI-24311-32)	1	
6	NPS02582-UNIT	FLX HANDLEBAR (SJI-24311-33)	1	
7	NPS01759-UNIT	FLX SPRING (SJI-23510-40)	2	
8	NPS01760-UNIT	FLX SCREW-450 M10 (SJI-23510-41)	2	
9	NPS02583-UNIT	FLX HANDLE LEVER (SJI-24311-36)	1	
10	NPS01762-UNIT	FLX NUT (SJI-23510-43)	2	
11	NPS02599-UNIT	FLX CONTROL SHAFT HANDLE (SJI-24311-38)	1	
12	NPS02584-UNIT	FLX HANDLE SUPPORT SHAFT (SJI-24311-39)	1	
13	NPS02600-UNIT	FLX HANDLE TUNE FCG-250 (SJI-24311-40)	1	
14	NPS02585-UNIT	FLX HANDLE COVER (SJI-24311-41)	1	
15	NPS02601-UNIT	FLX SWITCH BOX BOTTOM PLATE (SJI-24311-42)	1	
16	NPS01769-UNIT	FLX POWER INDICATOR (SJI-23510-51)	1	
17	NPS01770-UNIT	FLX STOP SWITCH (SJI-23510-52)	1	
18	NPS02559-UNIT	FLX SWITCH BOX (SJI-24311-43)	1	
19	NPS01771-UNIT	FLX START (SJI-23510-53)	1	
20	NPS01731-UNIT	FLX BELLOWS CONNECTOR (SJI-23510-27)	1	
21	NPS02594-UNIT	FLX SWITCH BOX BRACKET LEFT (SJI-24311-44-1)	1	
	NPS02595-UNIT	FLX SWITCH BOX BRACKET RIGHT (SJI-24311-44-2)	1	
22	NPS02511-UNIT	FLX LATCH PIN (SJI-24311-1)	1	
23	NPS07685-UNIT	FLX SOCKET HEAD SCREW M10X25 (SJI-24311-45)	2	
24	NPS07669-UNIT	FLX SOCKET HEAD SCREW M6X12 (SJI-24311-46)	12	
25	NPS01776-UNIT	FLX COUNTERSUNK HEAD SCREW M6X16 (SJI-23510-129)	6	



Wheel (FCG-250)

Item No.	Product Code	Description	Qty	Remarks
1	NPS01778-UNIT	FLX WHEEL (SJI-23510-57)	1	
2	NPS01779-UNIT	FLX ROLLING BEARINGS (SJI-23510-58)	2	
3	NPS01780-UNIT	FLX CIRCLIP B27.8M - 3DM1-20 (SJI-23510-59)	1	
4	NPS01781-UNIT	FLX CIRCLIP B27.7M - 3BM1-47 (SJI-23510-60)	1	
5	NPS01782-UNIT	FLX WHEELS COVER (SJI-23510-61)	1	



Motor (FCG-250) Continued

Item No.	Product Code	Description	Qty	Remarks
1	NPS02564-UNIT	FLX ELECTRICAL BOX COVER (SJI-24311-6)	1	
2	NPS02565-UNIT	FLX ELECTRICAL BOX (SJI-24311-5)	1	
3	NPS02566-UNIT	FLX HEAVY DUTY PLUG (SJI-24311-7)	1	
4	NPS02572-UNIT	FLX ELECTRICAL BOX MOUNTING PLATE (SJI-24311-11)	2	
5	NPS02573-UNIT	FLX FILTER FAN (SJI-24311-10)	2	
6	NPS02557-UNIT	FLX ELECTRIC CONTACTOR (SJI-24311-9)	1	
7	NPS02558-UNIT	FLX THERMAL OVERLOAD RELAY (SJI-24311-8)	1	
8	NPS01832-UNIT	FLX HEX SOCKET HEAD SCREW M6X30 (SJI-23510-304)	4	
9	NPS02574-UNIT	FLX HEX SOCKET HEAD SCREW M8X30 (SJI-24311-24)	4	



## Motor (FCG-250) Continued

Item No.	Product Code	Description	Qty	Remarks
1	NPS02602-UNIT	FLX CONNECTING HUB (SJI-24311-48)	1	
2	NPS02586-UNIT	FLX ROLLING BEARING 6208 (SJI-24311-49)	2	
3	NPS02603-UNIT	FLX OUTPUT SHAFT (SJI-24311-50)	1	
4	NPS02604-UNIT	FLX CONNECTOR FCG-250 (SJI-24311-51)	1	
5	NPS02592-UNIT	FLX OIL SEAL (SJI-24311-52)	2	
6	NPS02605-UNIT	FLX KEY 8X20 (SJI-24311-53)	2	
7	NPS02606-UNIT	FLX MOUNTING PLATE COVER (SJI-24311-54)	1	
8	NPS02607-UNIT	FLX CLAMP BLOCK (SJI-24311-55)	2	
9	NPS02608-UNIT	FLX GRINDING HEAD (SJI-24311-56)	1	
10-1	NPS01064-UNIT	TEC 1.8KW SINGLE PHASE MOTOR (SJI-24311-57)	1	
10-2	NPS01068-UNIT	TEC ELEC MOTOR FAN COWLING MTC 100 (TEC-MC100FC0TML)	1	
10-3	NPS01067-UNIT	TEC ELEC MOTOR PLASTIC COOL FAN (TEC-MF100PL4TML)	1	
10-4	NPS01069-UNIT	TEC ELEC TERMINAL BOX COMP ME100KMTC (TEC-MJ100TML)	1	
10-5	NPS01065-UNIT	TEC ELEC MOTOR START CAPACITOR (TEC-SC200300)	1	
10-6	NPS01066-UNIT	TEC ELEC MOTOR RUN CAPACITOR (TEC-RC050450)	1	
11	NPS02561-UNIT	FLX ADAPTOR PLATE (SJI-24311-58)	1	
12	NPS02562-UNIT	FLX FLEXIBLE COUPLING (SJI-24311-59)	1	
13	NPS02563-UNIT	FLX GRIND HUB MOTOR ADAPTOR (SJI-24311-60)	1	
14	NPS02569-UNIT	FLX HEXAGON SOCKET HEAD SCREW M10x50 (SJI-24311-61)	4	
15	NPS02570-UNIT	FLX FLAT WASHER (SJI-24311-62)	4	
16	NPS02571-UNIT	FLX HEXAGON SOCKET HEAD SCREW M10x30 (SJI-24311-63)	4	
17	NPS02588-UNIT	FLX STANDARD ELASTIC WASHER (SJI-24311-64)	4	
18	NPS02056-UNIT	FLX HEXAGON COUNTERSUNK SCREW M8x30 (SJI-24311-65)	6	
19	NPS02589-UNIT	FLX HEXAGON SOCKET HEAD SCREW M8x45 (SJI-24311-66)	4	
20	NPS02590-UNIT	FLX STANDARD ELASTIC WASHER (SJI-24311-67)	4	
21	NPS02609-UNIT	FLX HEXAGON SOCKET HEAD SCREW M6x25 (SJI-24311-68)	4	
22	NPS02611-UNIT	FLX STANDARD ELASTIC WASHER (SJI-24311-69)	4	
23	NPS02612-UNIT	FLX HEXAGON SOCKET HEAD SCREW M6x16 (SJI-24311-70)	6	
24	NPS02613-UNIT	FLX FLAT WASHER (SJI-24311-71)	6	
25	NPS02615-UNIT	FLX HEXAGONAL NUT (SJI-24311-72)	1	
26	NPS02616-UNIT	FLX STANDARD ELASTIC WASHER (SJI-24311-73)	1	
27	NPS02618-UNIT	FLX LARGE WASHER (SJI-24311-74)	1	
29	NPS02620-UNIT	FLX PLATE 250 (SJI-24311-76)	1	
30	NPS02591-UNIT	FLX HEXAGON SOCKET HEAD SCREW M12x30 (SJI-24311-77)	4	
31	NPS02619-UNIT	FLX DUST SHROUD 250 (SJI-24311-78)	1	





## Flextool

1956 Dandenong Road, Clayton VIC 3168, Australia

Phone (AUS): 1300 353 986

[flextool.com.au](http://flextool.com.au)

ABN 80 069 961 968

This manual summarises our best knowledge of the product based on the information available at the time of publication. You should read this manual carefully and consider the information in the context of how the product will be used. Our responsibility for products sold is subject to our standard terms and conditions of sale.

### DISCLAIMER:

Any advice, recommendation, information, assistance or service provided by us in this manual is given in good faith and is believed by us to be appropriate and reliable. However, any advice, recommendation, information, assistance or service provided by us is provided without liability or responsibility PROVIDED THAT the foregoing shall not exclude, limit, restrict or modify the right entitlements and remedies conferred upon any person or the liabilities imposed upon us by any condition or warranty implied by Commonwealth, State or Territory Act or ordinance void or prohibiting such exclusion limitation or modification. The product can be expected to perform as indicated in this manual so long as operation and operational procedures of the individual products are followed as recommended in this manual.

Design and technical specifications may be subject to changes.

© This publication is copyright. All rights are reserved. Flextool is a registered trade mark of Parchem Construction Supplies Pty Ltd.