

# PARTS LIST

HONDA ENGINE  
**GX200UT2-SM14**  
*FOR MIKASA PRODUCTS*

**WITH PRODUCT NAME**

HYDRAURIC REVERSIBLE COMPACTOR

MVH-150GH :EXPORT

CONCRETE CUTTER

MVC-L14H :EXPORT



---

# PARTS REMARK INDEX

---

## How to read the marks and remarks used in this parts book.

### Section 1 : Explanation of Code Use In "MRK" Column

OO : Interchangeable between the new part and the old one.

XX : Not Interchangeable between new and old.

OX : New part is usable for the old machine but the old part is not usable for the new machine.

XO : The old part is usable for the new machine but the new part is not usable for the old machine.

Note : In case of the lack of interchangeability between the new part and old part, a new part may be used by replacing all other parts found in the assembly. In this case, refer to section 2 for instruction on identifying other parts involved in a new assembly.

AD : Newly established(added)

DC : Suspended(discontinued)

NC : Part number changed

QC : Quantity used has been changed

NS : Not supplied individually but supplied in an assembly or a group.

AS : Special part designed to allow interchangeability between new and old part.

CR : Correction

### Section 2 : Items Found In "Remark" Column

Serial Numbers - Where indicated, this indicates a serial number range (inclusive) where a particular part is used.

Model Number - Where indicated, this shows that the corresponding part is utilized only with this specific model number or model number variant.

# or \* : All parts with the same number following # or \* belong to the same assembly. this part cannot be interchanged individually with any other assemblies to replace an old part (indicated by #), with a new part(indicated by \*), then all other parts of that assembly must be replaced with new ones.

Note : If more than one of the same reference number is listed, the last one listed indicates newest(or latest)part available.

### Section 3: Example

REF NO.	PART NO.	PART NAME	QTY	MRK	REMARKS
457(1)	5122-09230	Hinge Metal, Upper/24g	1		-1070 #3 (5)
457(2)	5072-09420	Hinge Metal, Upper M16	1	OX(3)	U1071-(6) * 3(7)

(1) Old part

(2) New part

(3) New part usable with old machine, but old part not usable with new machine (reference section 1).

(4) Old part number is used through this machine serial number.

(5) Old part, used in an assembly with other parts marked with #3. To use this part on a new machine, all other parts in this assembly must be replaced with old ones.

(6) New part put into use starting with this serial number and is still current.

(7) New part used in an assembly with other parts marked \* 3, to use this part as a replacement for an old part, all other \* 3 marked parts must be changed at the same time.

### Section 4: Items Found In "MK2" Column

(only for suspended products)

! OO ("OO" is shown in figure) : The part shown in lower line is supplied.

! SD : Not available due to termination of production.

! NS : Not supplied individually, but supplied in an assembly or a group.

! PD : Supplied as unit product.

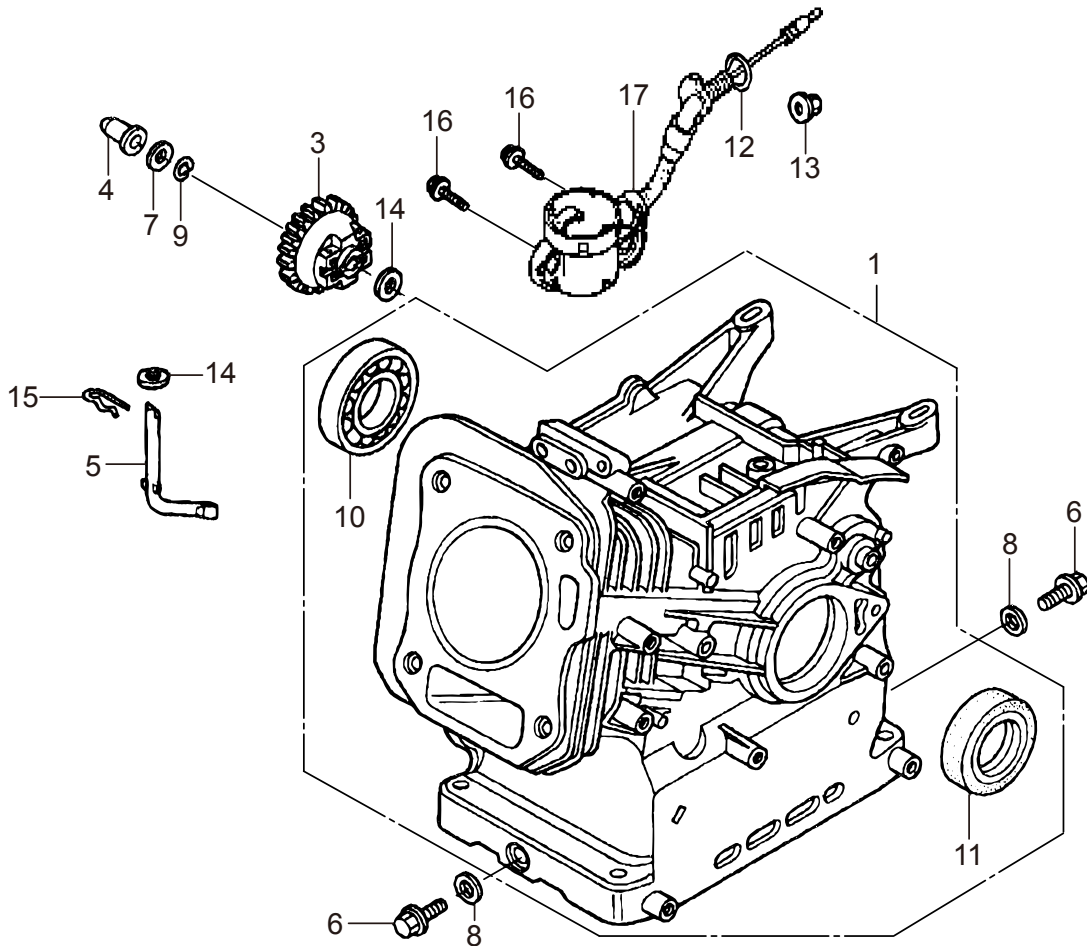
SS : Not available after stock run out.

(The contents of this parts catalog are subject to change without notice.)

# GX200UT2-SM14

## CYLINDER BARREL

BPZ0

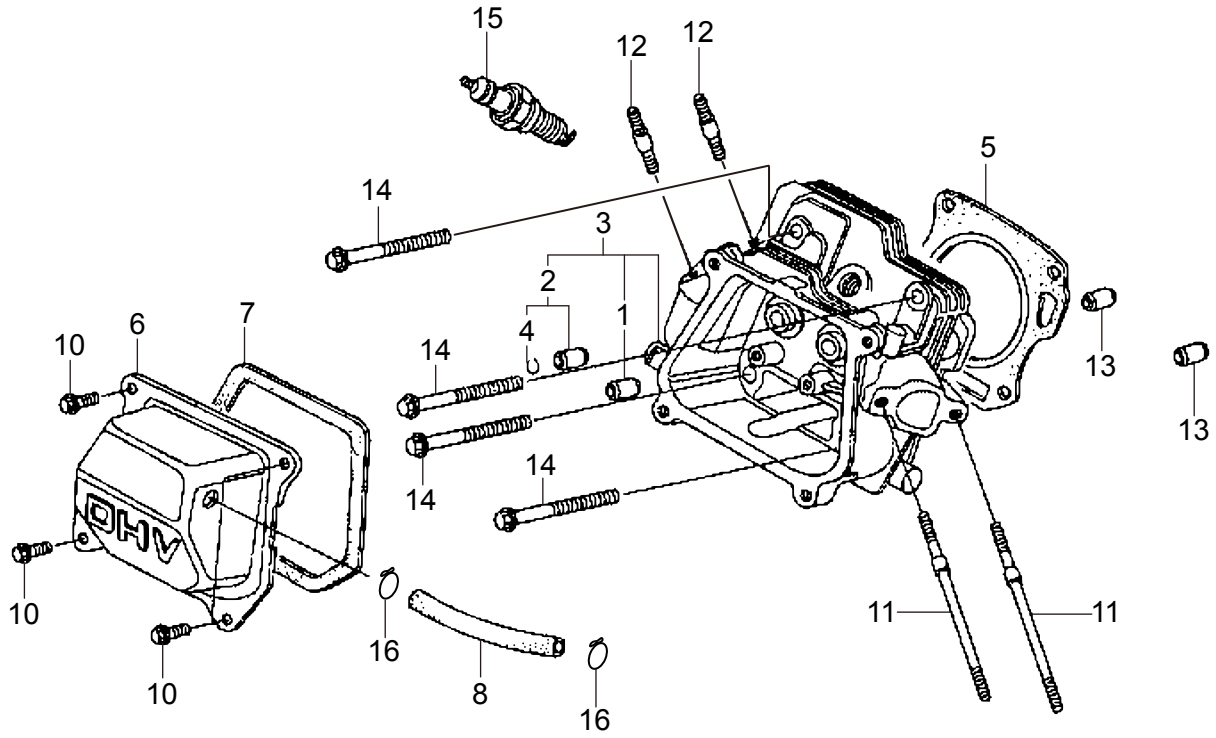




# GX200UT2-SM14

BQA0

## CYLINDER HEAD

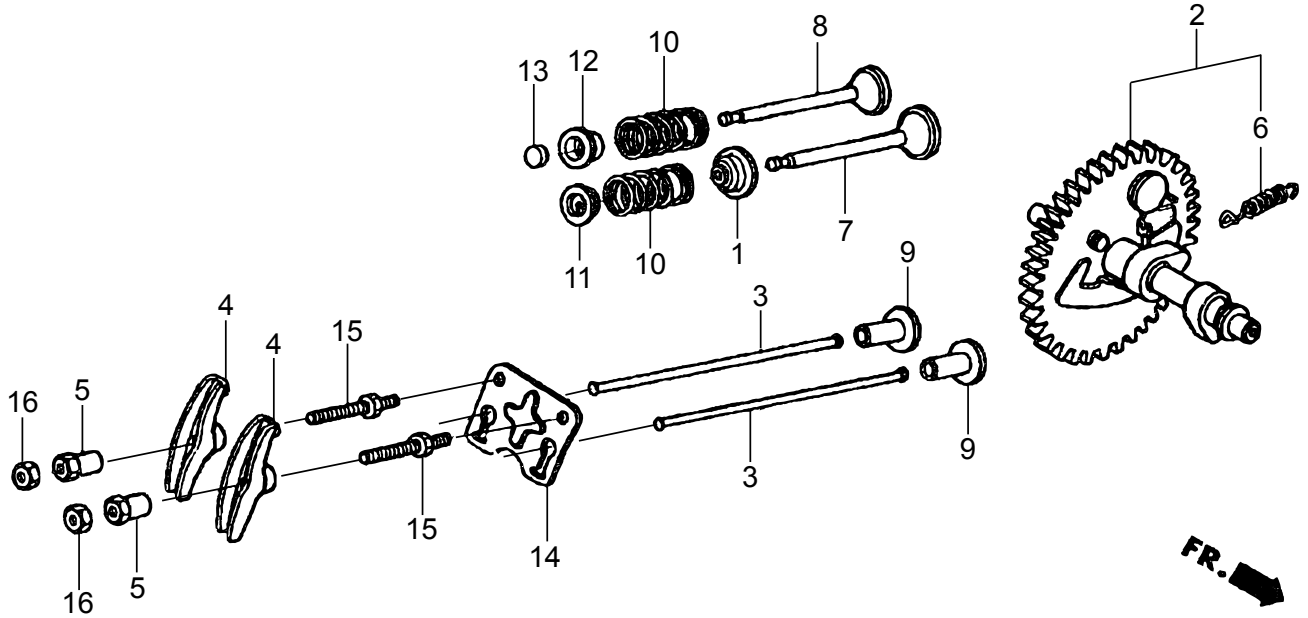




# GX200UT2-SM14

BQB0

## CAMSHAFT



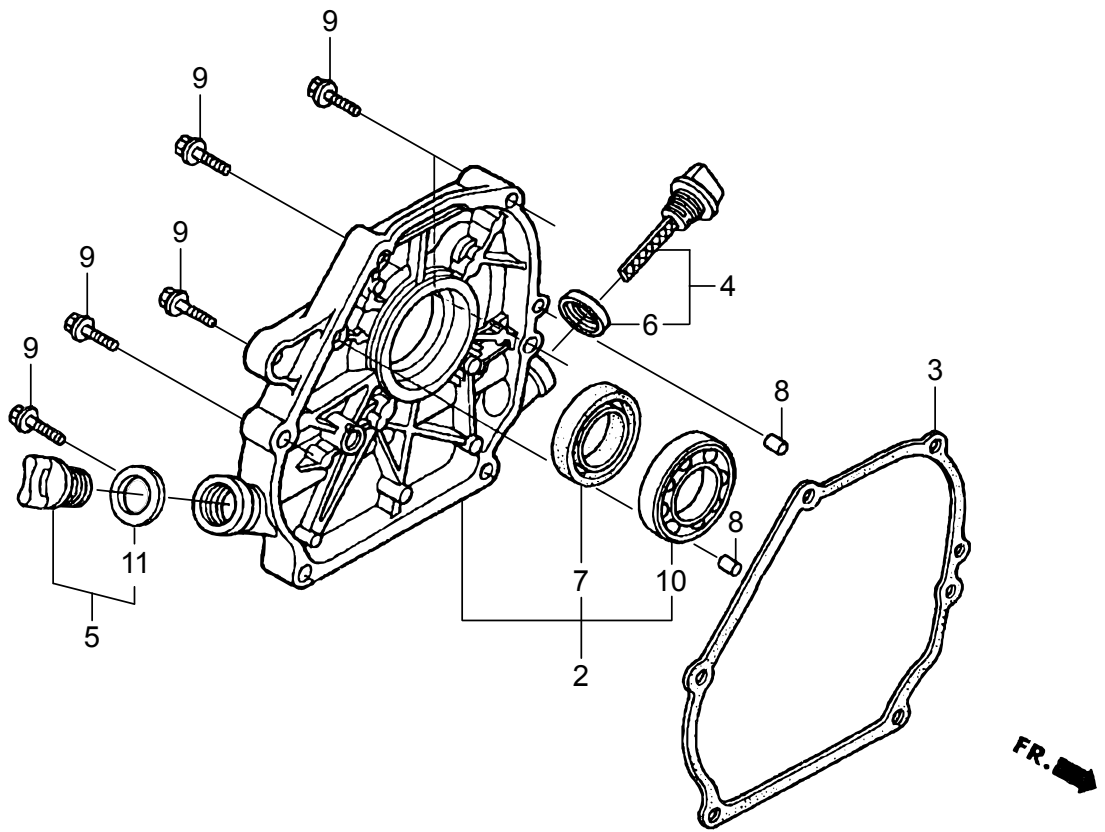




# GX200UT2-SM14

BQC0

## CRANKCASE COVER

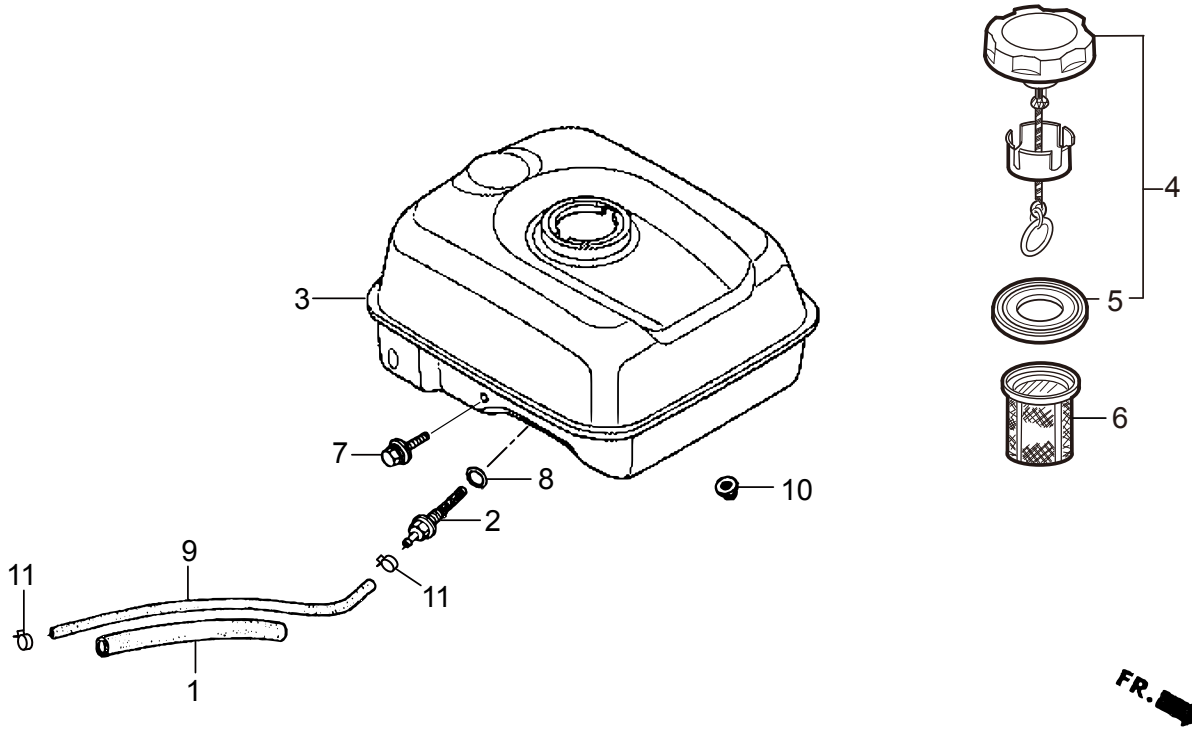




# GX200UT2-SM14

BQD0

## FUEL TANK

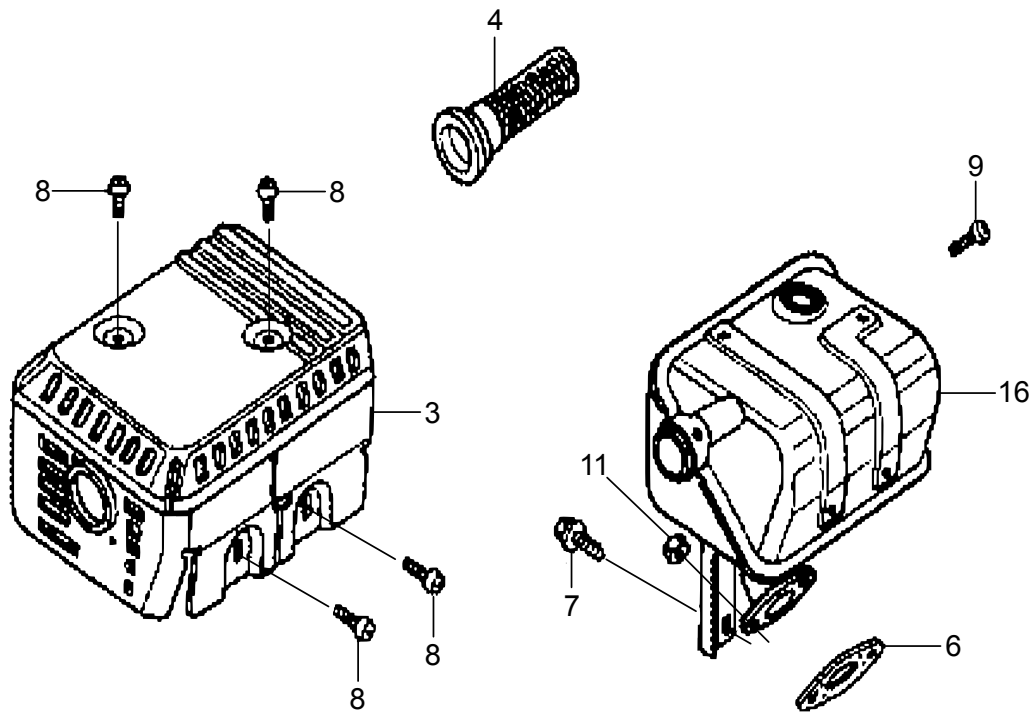




# GX200UT2-SM14

BQE0

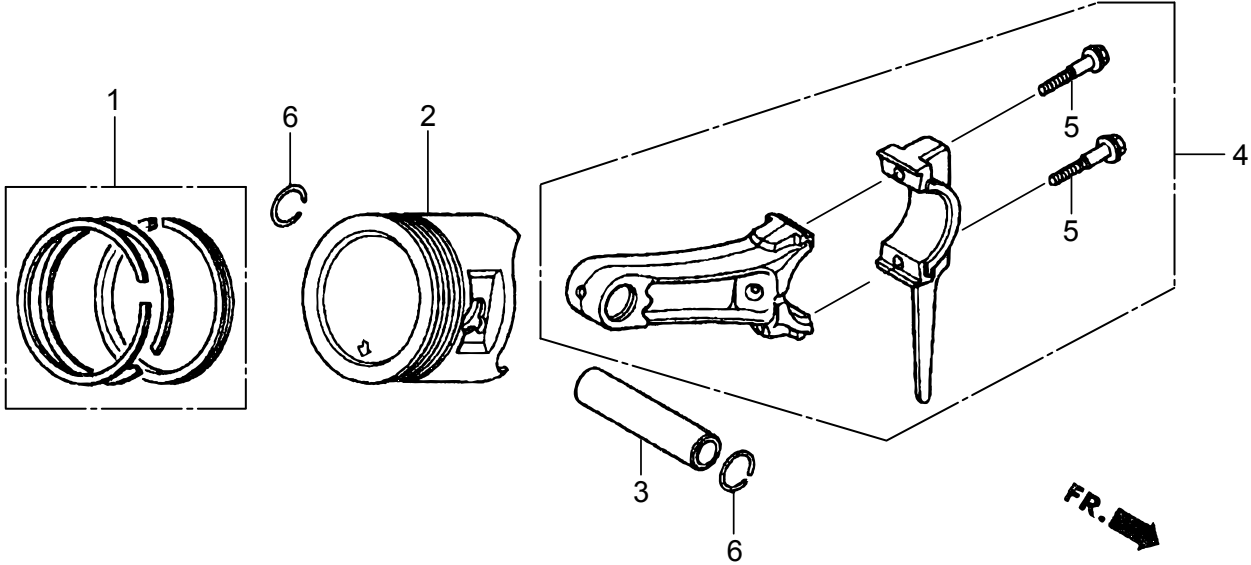
## MUFFLER



FR. →



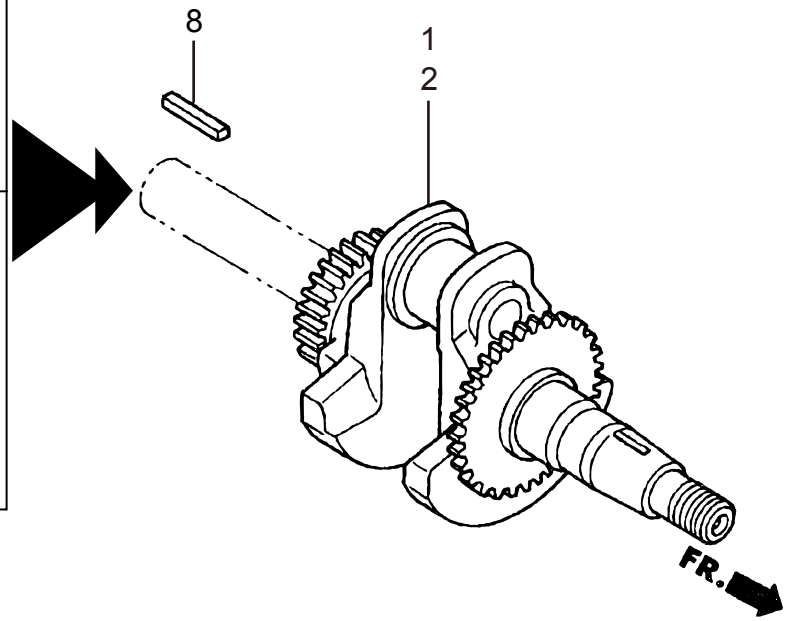
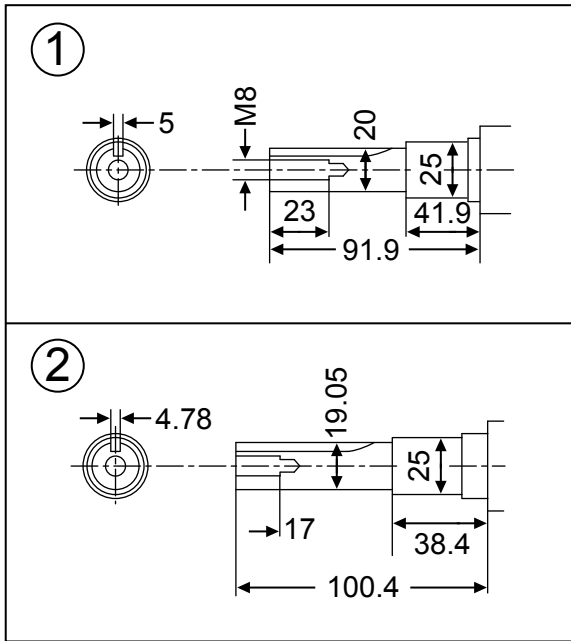
PISTON







CRANKSHAFT

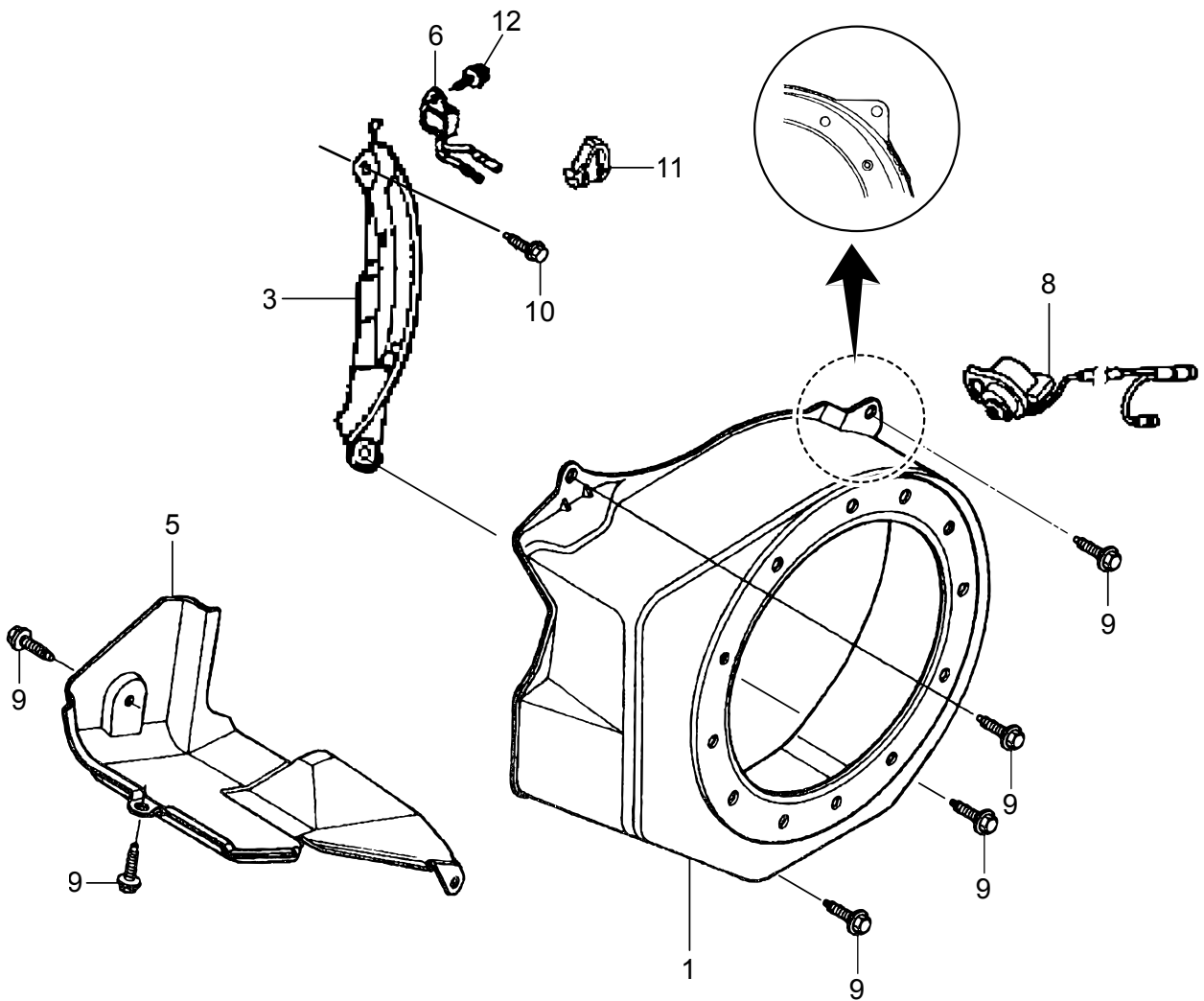




# GX200UT2-SM14

BQH0

## FAN COVER

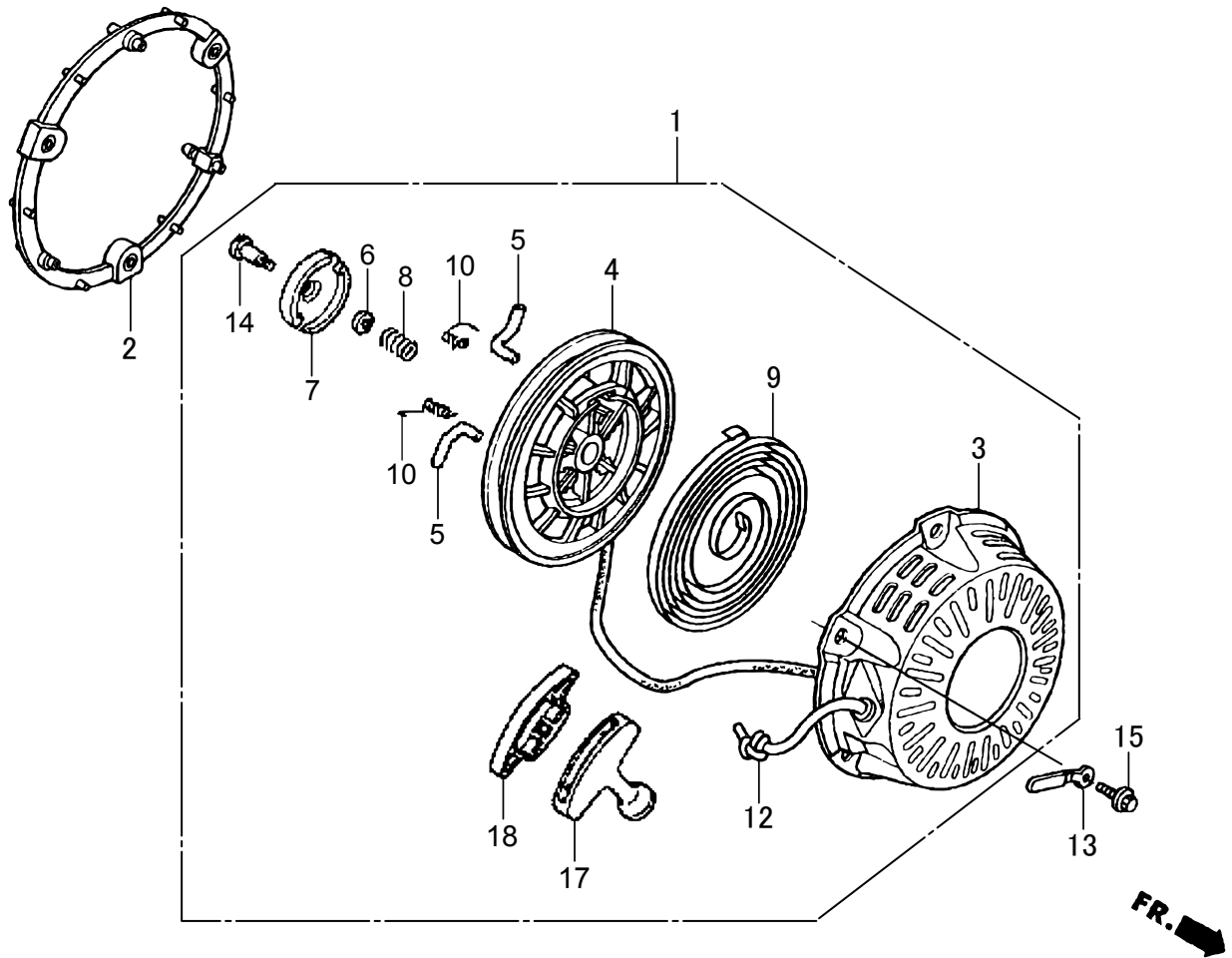




# GX200UT2-SM14

BQI0

## RECOIL STARTER

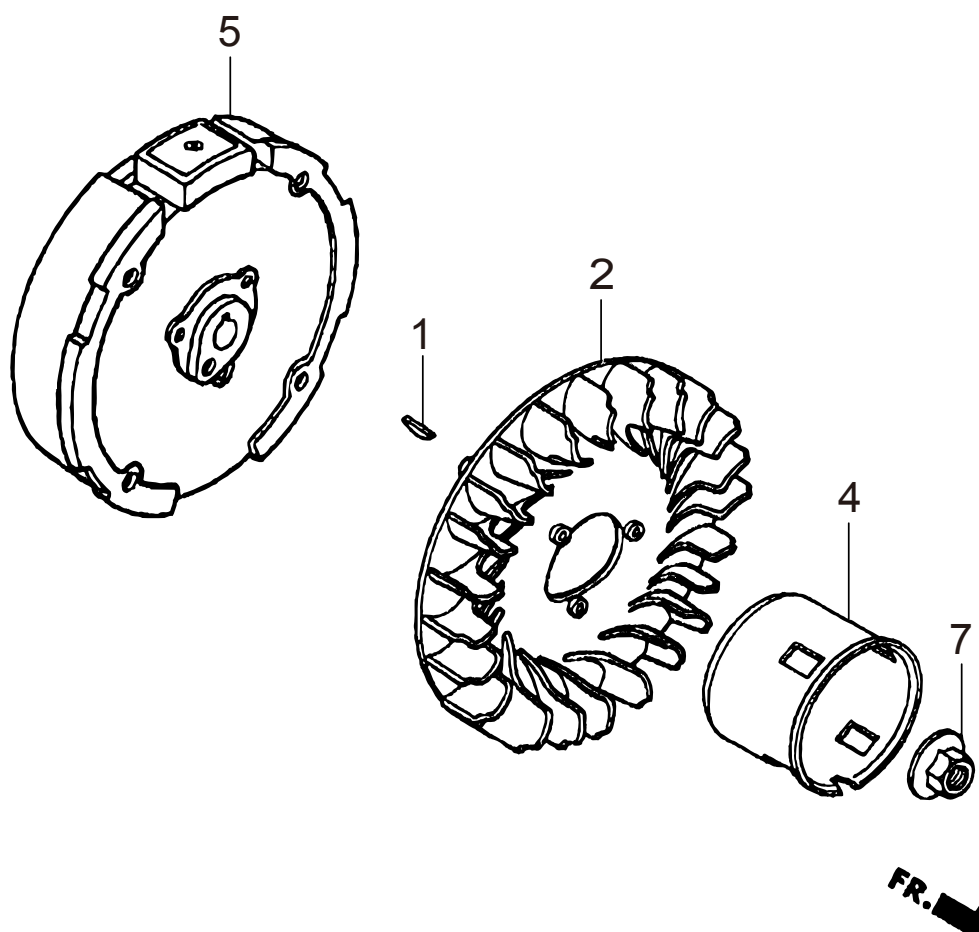




# GX200UT2-SM14

BQJ0

## FLYWHEEL



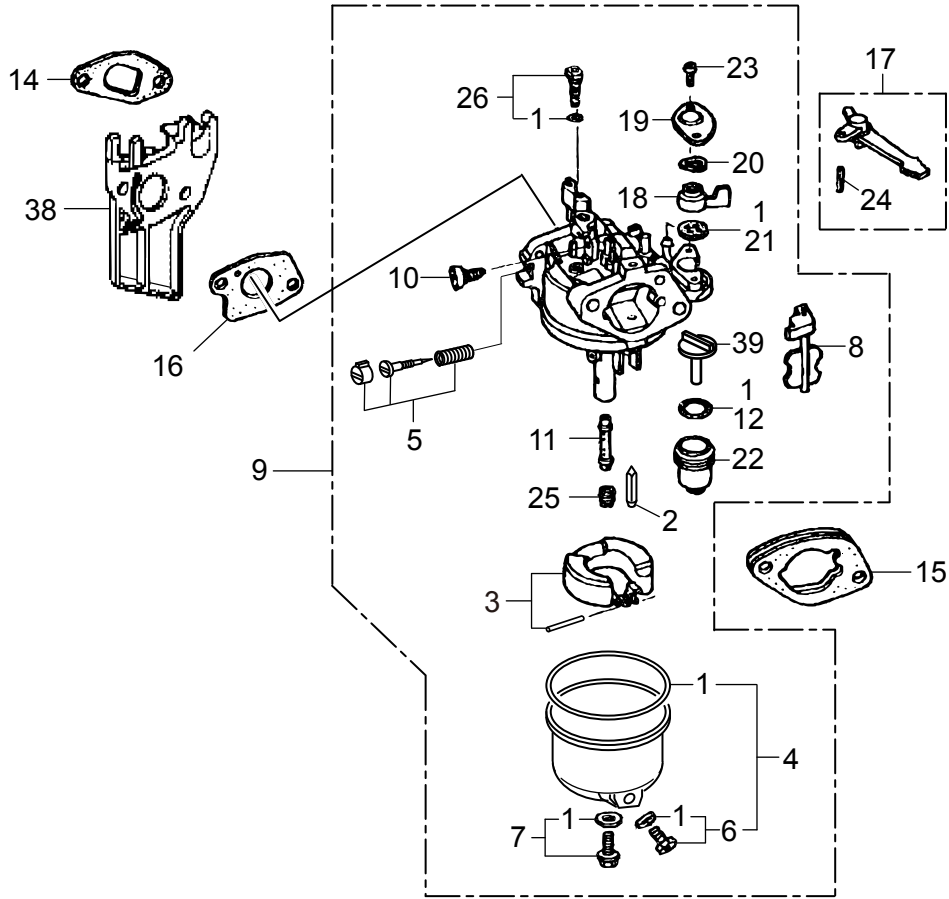




# GX200UT2-SM14

BQK0

## CARBURETOR

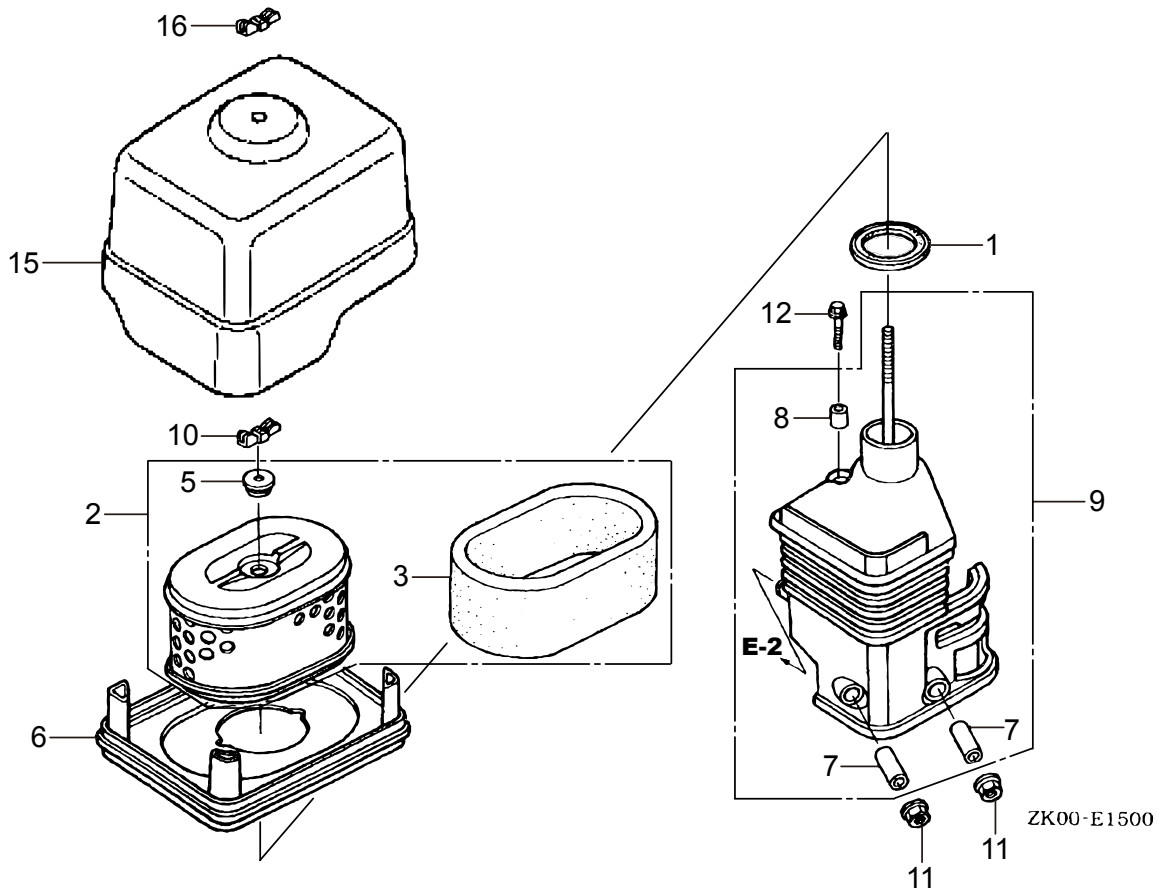




# GX200UT2-SM14

BQM0

## AIR CLEANER(DUAL)

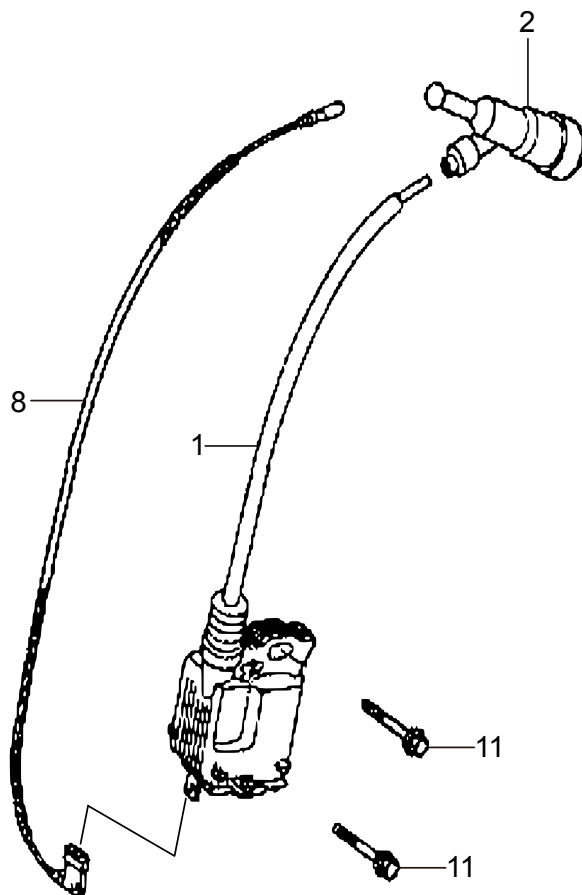




# GX200UT2-SM14

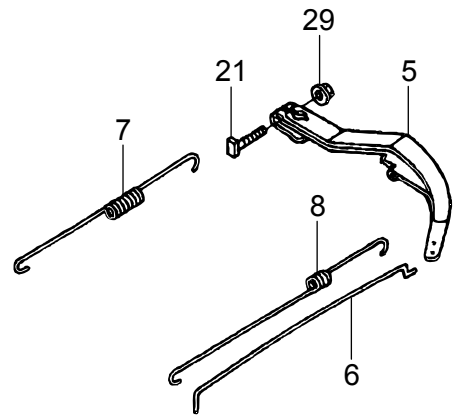
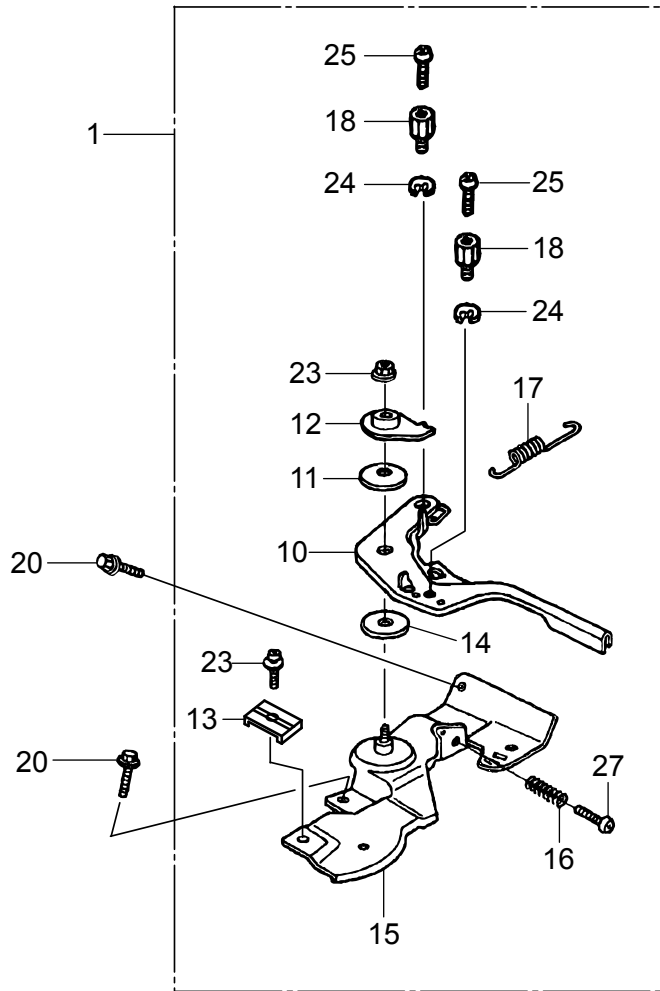
BQ00

## IGNITION COIL





CONTROL



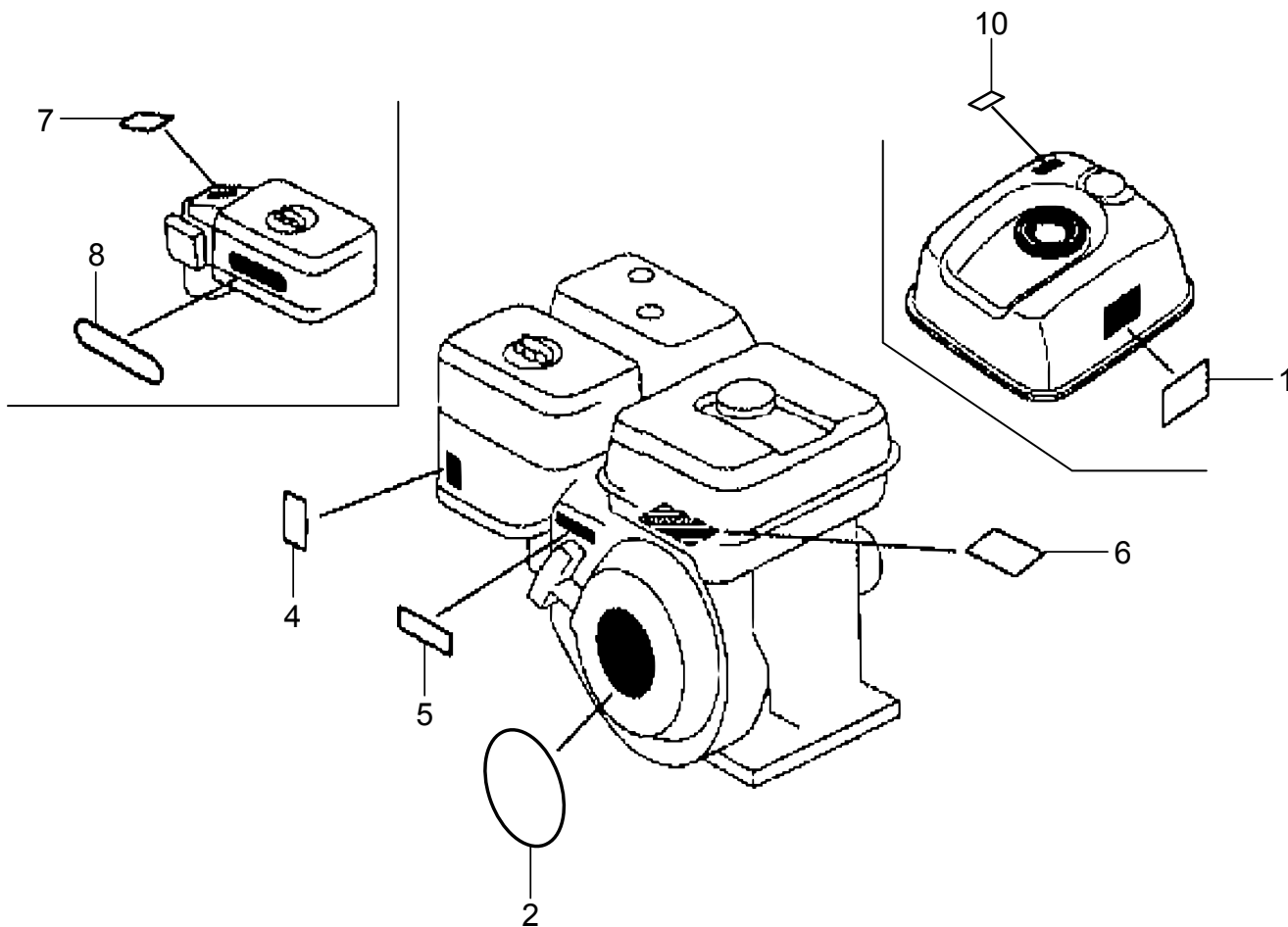




# GX200UT2-SM14

BQR0

LABEL

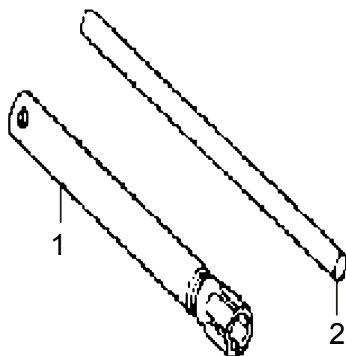




**GX200UT2-SM14**

**BQT0**

TOOL





*Mikasa*