



SPARE PARTS MANUAL

MIKASA FORWARD PLATE COMPACTOR MVC-T90H



Version 3.0 (January 2025)

FOR MORE INFORMATION
CONTACT US ON 1300 353 986 OR VISIT flextool.com.au

EXCLUSIVE TO



PLATE COMPACTOR

MVC-T90H

MVC-T90H VAS

PARTS LIST

405-08602

PARTS REMARK INDEX

How to read the marks and remarks used in this parts book.

Section 1 : Explanation of Code Use In “MRK” Column

OO : Interchangeable between the new part and the old one.

XX : Not Interchangeable between new and old.

OX : New part is usable for the old machine but the old part is not usable for the new machine.

XO : The old part is usable for the new machine but the new part is not usable for the old machine.

Note : In case of the lack of interchangeability between the new part and old part, a new part may be used by replacing all other parts found in the assembly. In this case, refer to section 2 for instruction on identifying other parts involved in a new assembly.

AD : Newly established(added)

DC : Suspended(discontinued)

NC : Part number changed

QC : Quantity used has been changed

NS : Not supplied individually but supplied in an assembly or a group.

AS : Special part designed to allow interchangeability between new and old part.

CR : Correction

Section 2 : Items Found In “Remark” Column

Serial Numbers - Where indicated, this indicates a serial number range (inclusive) where a particular part is used.

Model Number - Where indicated, this shows that the corresponding part is utilized only with this specific model number or model number variant.

or * : All parts with the same number following # or * belong to the same assembly. this part cannot be interchanged individually with any other assemblies to replace an old part (indicated by #), with a new part(indicated by *), then all other parts of that assembly must be replaced with new ones.

Note : If more than one of the same reference number is listed, the last one listed indicates newest(or latest)part available.

Section 3: Example

REF NO.	PART NO.	PART NAME	QTY	MRK	REMARKS
457(1)	5122-09230	Hinge Metal, Upper/24g	1		-1070 #3 (5)
457(2)	5072-09420	Hinge Metal, Upper M16	1	OX(3)	U1071-(6) * 3(7)

(1) Old part

(2) New part

(3) New part usable with old machine, but old part not usable with new machine (reference section 1).

(4) Old part number is used through this machine serial number.

(5) Old part, used in an assembly with other parts marked with #3. To use this part on a new machine, all other parts in this assembly must be replaced with old ones.

(6) New part put into use starting with this serial number and is still current.

(7) New part used in an assembly with other parts marked * 3, to use this part as a replacement for an old part, all other * 3 marked parts must be changed at the same time.

Section 4: Items Found In “MK2” Column

(only for suspended products)

! OO (“OO” is shown in figure) : The part shown in lower line is supplied.

! SD : Not available due to termination of production.

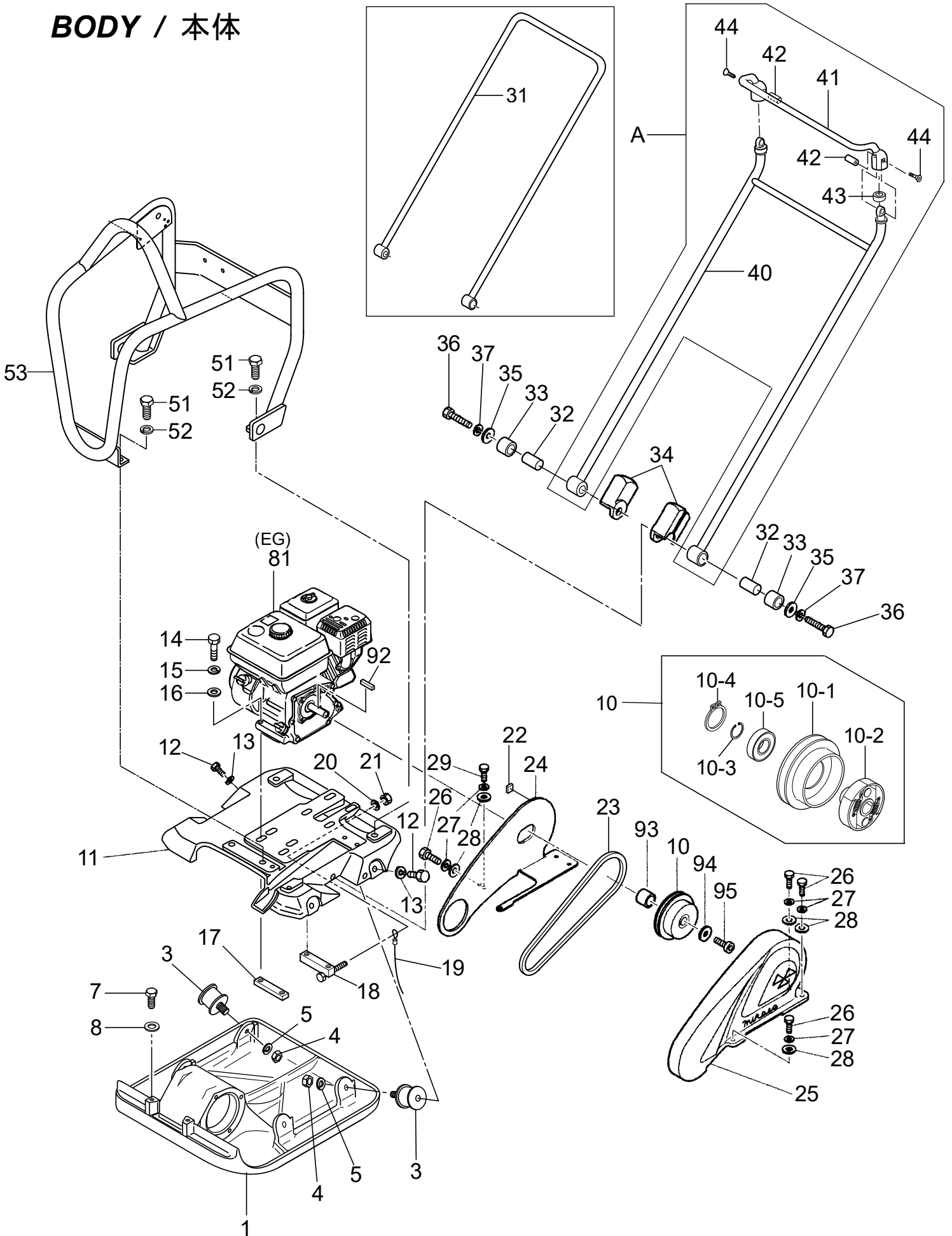
! NS : Not supplied individually, but supplied in an assembly or a group.

! PD : Supplied as unit product.

SS : Not available after stock run out.

(The contents of this parts catalog are subject to change without notice.)

BODY / 本体



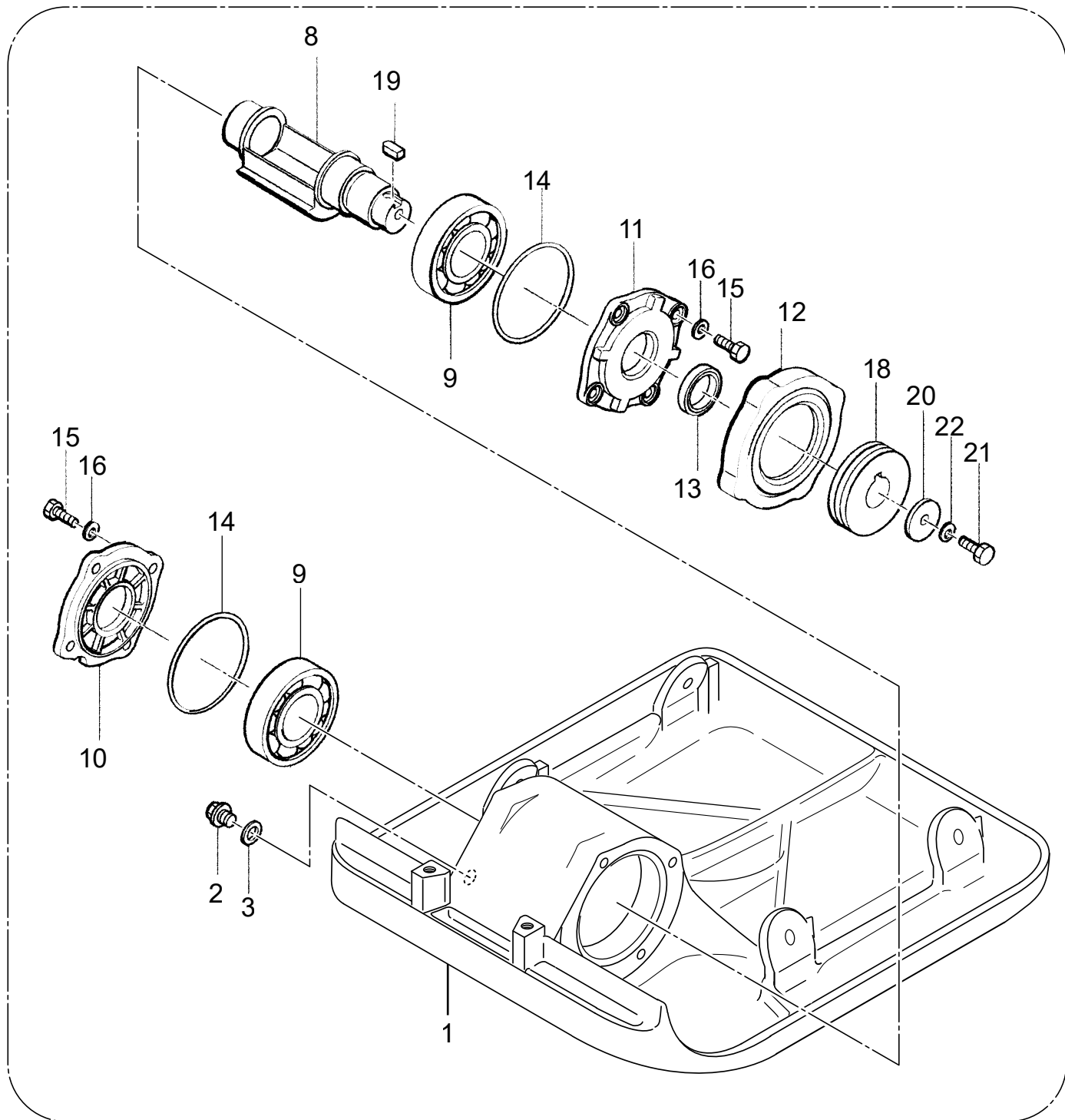
1. BODY

** 4UE **

REF NO.	PART NO.	PART NAME	Q' TY	MRK	MK2	REMARKS
A	4169-10120	VAS HANDLE AY/MVC-T90, 88V	1			T90H VAS
1	4161-20141-GR	VIBRATING PLATE AY/T90/GR	1			GR/JP, EXP
1	4161-20142-OR	VIBRATING PLATE AY/T90/OR	1			OR/EXP
1	4161-20143-OP	VIBRATING PLATE AY/T90/OP	1		OJH	OP/EXP
3	9390-10440	SHOCK ABSORBER 50-45-67	4		SX2	
4	0203-10080	NUT M10	4			
5	0302-10250	SW M10	4			
7	0012-21220	BOLT 12X20 T	2			
8	0311-12230	PW M12	2			
10	4169-10100	CLUTCH AY/T90/19.05MM	1			INCH SHAFT
10 -1	4164-64490	CLUTCH DRUM 85/MVC-T90	1			
10 -2	4163-51320	CLUTCH SHOE&BOSS AY/19.05	1			INCH SHZFT
10 -3	0802-00300	STOP RING S-30	1			
10 -4	0801-00550	STOP RING R-55	1			
10 -5	0460-06006	BEARING 6006DDU	1			
11	4161-20390-GR	BASE/MVC-T90/GR	1			GR
11	4161-20399-OR	BASE/MVC-T90/OR	1			OR
12	0012-21025	BOLT 10X25 T	4			
13	0302-10250	SW M10	4			
14	0012-20850	BOLT 8X50 T	4			
15	0302-08200	SW M8	4			
16	0311-08160	PW M8	4			
17	4044-12290	ENGINE NUT	1			
18	4164-66540	ENGINE NUT (W/BOLT)/T90	1			
19	9594-04350	EARTH WIRE	1		**	
20	0311-08160	PW M8	1			
21	0227-10809	NYLON NUT M8	1			
22	4164-54360	RUBBER PLATE 25X25X8	1			
23	0701-00332	V-BELT / RPF-3330	1			
24	4161-20950	BELT COVER (IN)/MVC-T90	1			
25	4160-10019-OR	BELT COVER-OR /EXP/MVC-T90	1			EXP/OR
25	4160-10015-GR	BELT COVER-GR /EXP/MVC-T90	1		**	JP/EXP/GR
25	4160-10040	BELTCOVER/MQ/MVC88VG	1			MQ
26	0012-20825	BOLT 8X25 T	4			
27	0302-08200	SW M8	5			
28	0311-08160	PW M8	5			
29	0012-20820	BOLT 8X20 T	1			
31	4162-18720	HANDLE /MVC-T90	1			T90H
32	9524-08710	COLLAR 13X20X44 ZN/T90	2		**	
33	4044-33430	RUBBER 20X32X28.5/52H	2			
34	4164-52361	HANDLE STOPPER /MVC-88	2		SX2	
35	9524-05600	WASHER 12.5X35X4.5	2			
36	0012-21253	BOLT 12X65 T	2			
37	0302-12300	SW M12	2			
40	4161-21010	VAS HANDLE BODY/MVC-T90, 88V	1		SS!41	T90H VAS
41	4162-18770	GRIP. VAS HANDLE/MVC-T90, 88V	1		!4169	T90H VAS
42	4164-59320	HANDLE NUT, VAS HANDLE/88G	2			T90H VAS
43	4164-59341	RUBBER, VAS HANDLE/MVC-88G	2			T90H VAS
44	0091-20407	SUNK HEAD BOLT 10X20 T	2			T90H VAS
51	0012-21025	BOLT 10X25 T	4			
52	0302-10250	SW M10	4			
53	4169-10170	GUARD, HOOK CP/T90H	1			
53	4169-10170	GUARD, HOOK CP/T90H	1			T/H METER
53	4161-21740	GUARD, HOOK/T90HC	1			GX160UT2QMXC
81	9122-16015	ENGINE AY/GX160UT2-QMX2	1		!9122	INCH SHAFT
81	9122-16021	ENGINE AY/GX160UT2-QMXC	1	XX	!9122	INCH SHAFT
81	9122-16025	ENGINE /GX160UT2-QCM	1			
92	90745-ZE1-600	KEY 4.78X4.78X38	1			
93	4164-52809	SPACER 19.05-25-15.6	1			
94	9524-00130	WASHER 9304	1		**	
95	0091-10004	SOCKET HEAD BOLT 5/16X24	1			

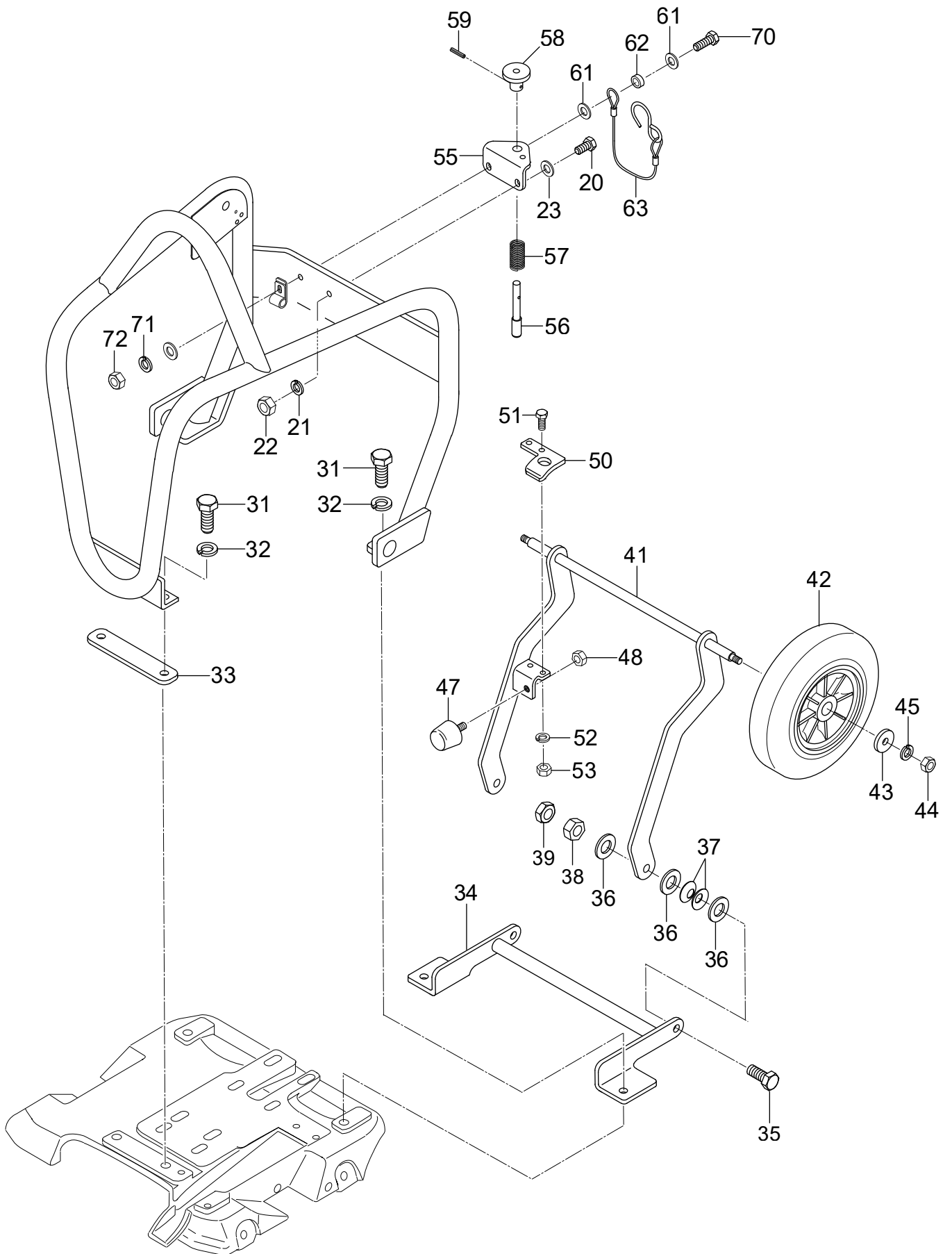
MVC-T90H / T90H VAS

VIBRATOR / 起振体關係



1-A

TRANSPORT WHEEL (OPTION) / 回動式移動車(オプション)



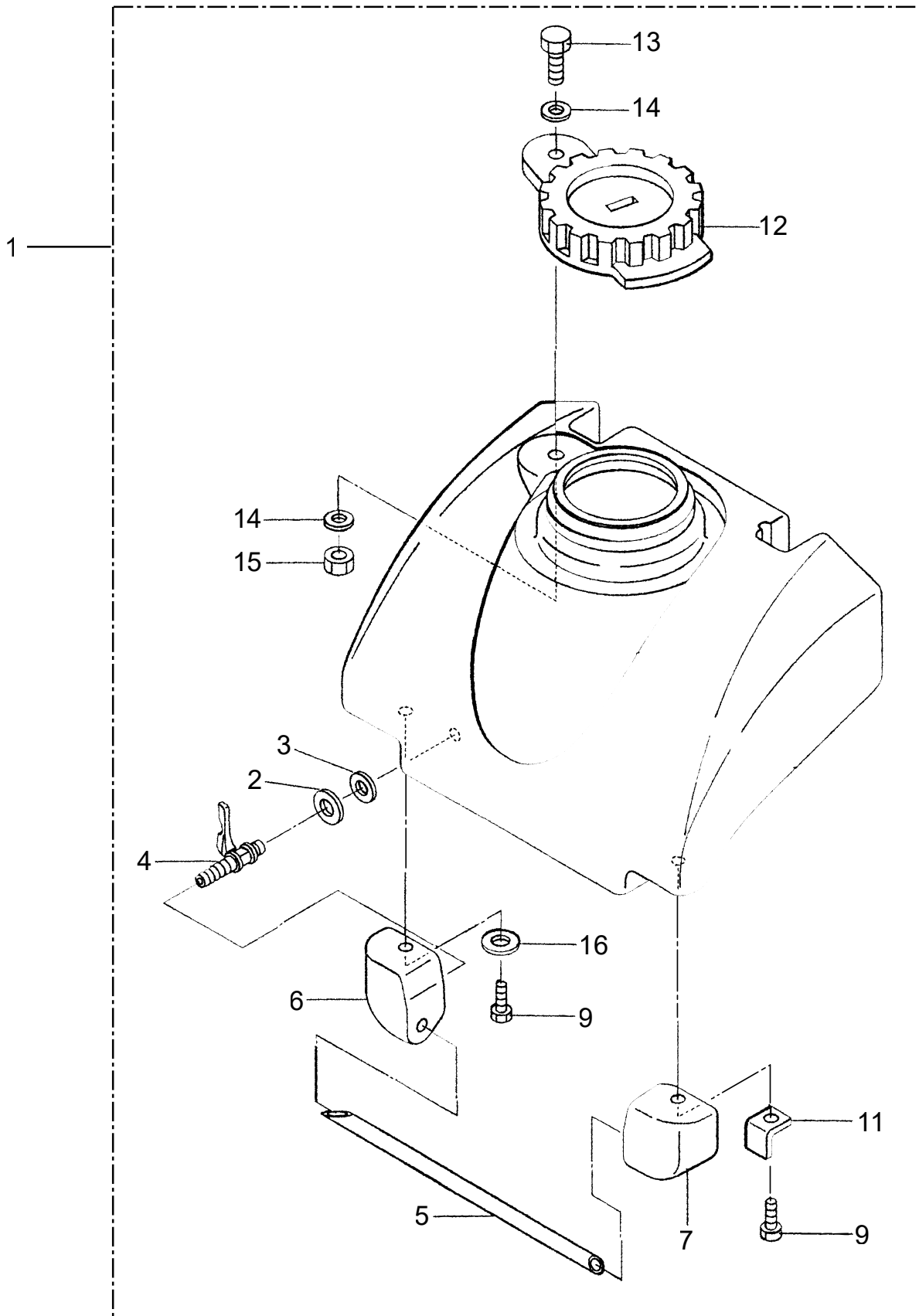
3. TRANSPORT WHEEL

** 4UG

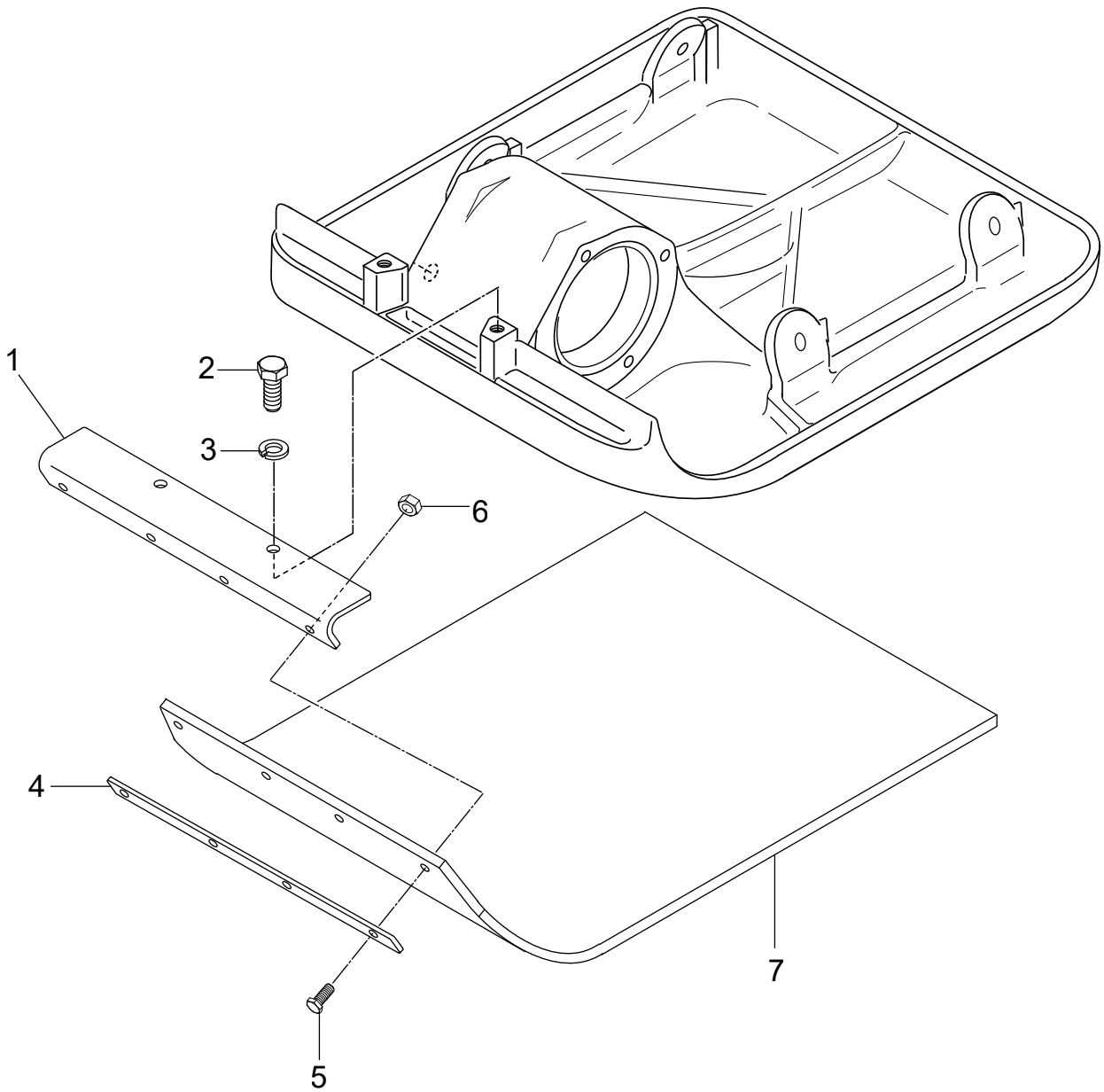
**

REF NO.	PART NO.	PART NAME	Q' TY	MRK	MK2	REMARKS
20	0012-20620	BOLT 6X20 T	1			
21	0302-06150	SW M6	1			
22	0203-06050	NUT M6	1			
23	0311-06100	PW M6	1			
31	0012-21030	BOLT 10X30 T	4			
32	0302-10250	SW M10	4			
33	4164-66680	SPACER, WHEEL/MVC-T90	1			
34	4163-52490	BRACKETS, WHEEL/T90	1			
35	0012-21035	BOLT 10X35 T	2			
36	0311-10160	PW M10	6			
37	0321-10180	CONICAL SPRING WASHER M10	4			
38	0203-10080	NUT M10	2			
39	0204-10060	NUT M10, H=6	2			
41	4162-18830	VEHICLE AXLE/MVC-T90	1		SX	
41	4162-19520	VEHICLE AXLE/T90HC	1			GX160UT2QMXC
42	9594-11020	WHEEL 12DX125X42B/T90	2			
43	9524-00130	WASHER 9304	2		**	
44	0203-08060	NUT M8	2			
45	0302-08200	SW M8	2			
47	9390-10270	STOPPER RUBBER (70) /MT	1			
48	0203-08060	NUT M8	1			
50	4164-67230	STOPPER, LOCK PIN/MVC-T90	1			
51	0012-20620	BOLT 6X20 T	2			
52	0302-06150	SW M6	2			
53	0203-06050	NUT M6	2			
55	4163-51700	LOCK HOLDER, WHEEL/T90	1			
56	4164-66690	LOCK PIN, WHEEL/MVC-T90	1			
57	4584-50880	SPRING 1.2-10-29 /MVH-120	1			
58	4164-67240	LOCK KNOB, WHEEL/MVC-T90	1			
59	0254-03016	SPRING PIN 3X16	1			
61	9524-08960	WASHER 6.5X16X1	2		**	
62	9524-08980	COLLAR 6.2X9X4 ZN	1		**	
63	4194-66670	LOCKWIRE, HANDLE /MVC-T90	1			
70	0012-20625	BOLT 6X25 T	1			
71	0302-06150	SW M6	1			
72	0203-06050	NUT M6	1			

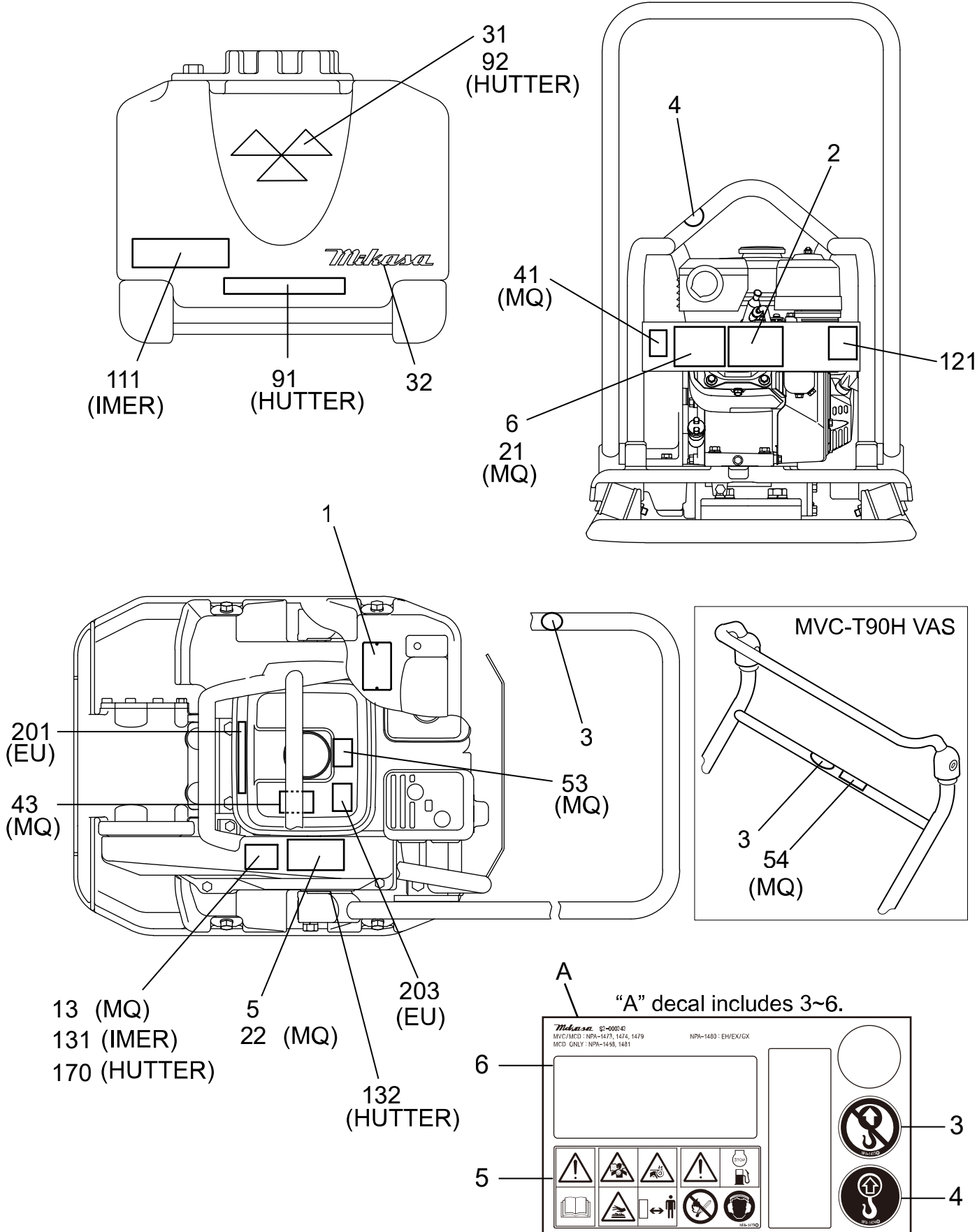
SPRINKLING EQUIPMENT (OPTION) / 散水装置(オプション)



BLOCK PLATE (OPTION)



NAME PLATES



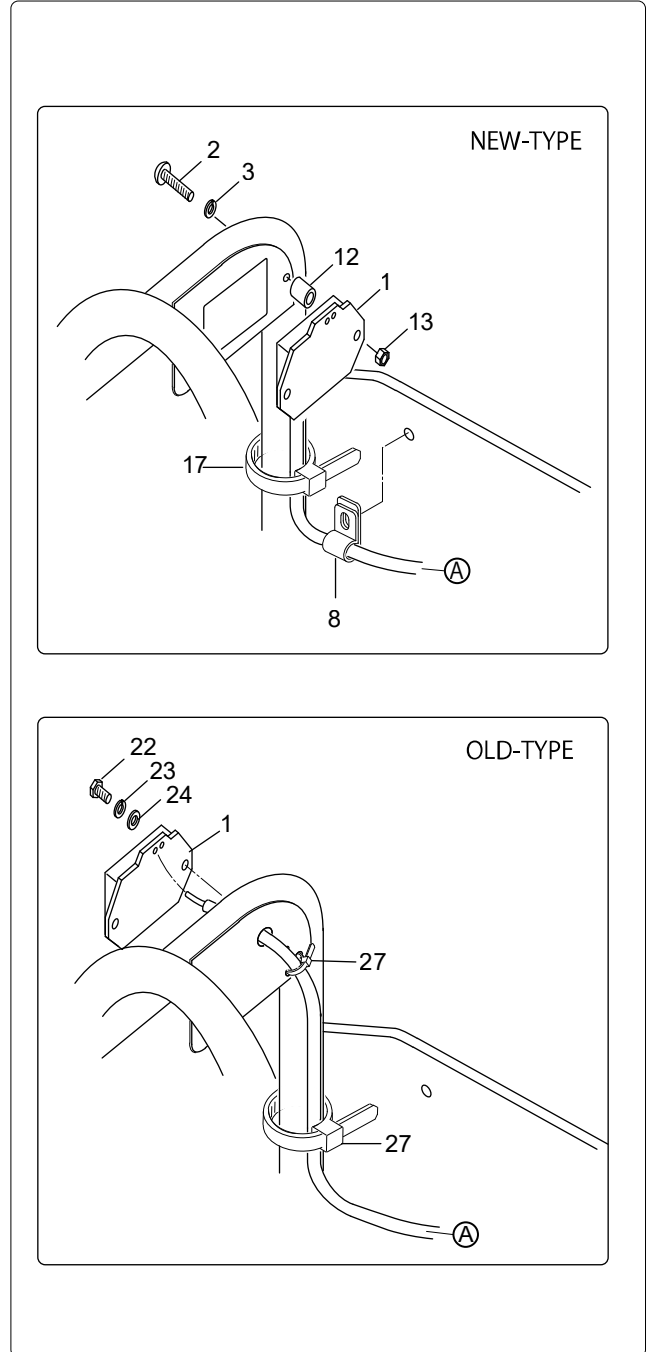
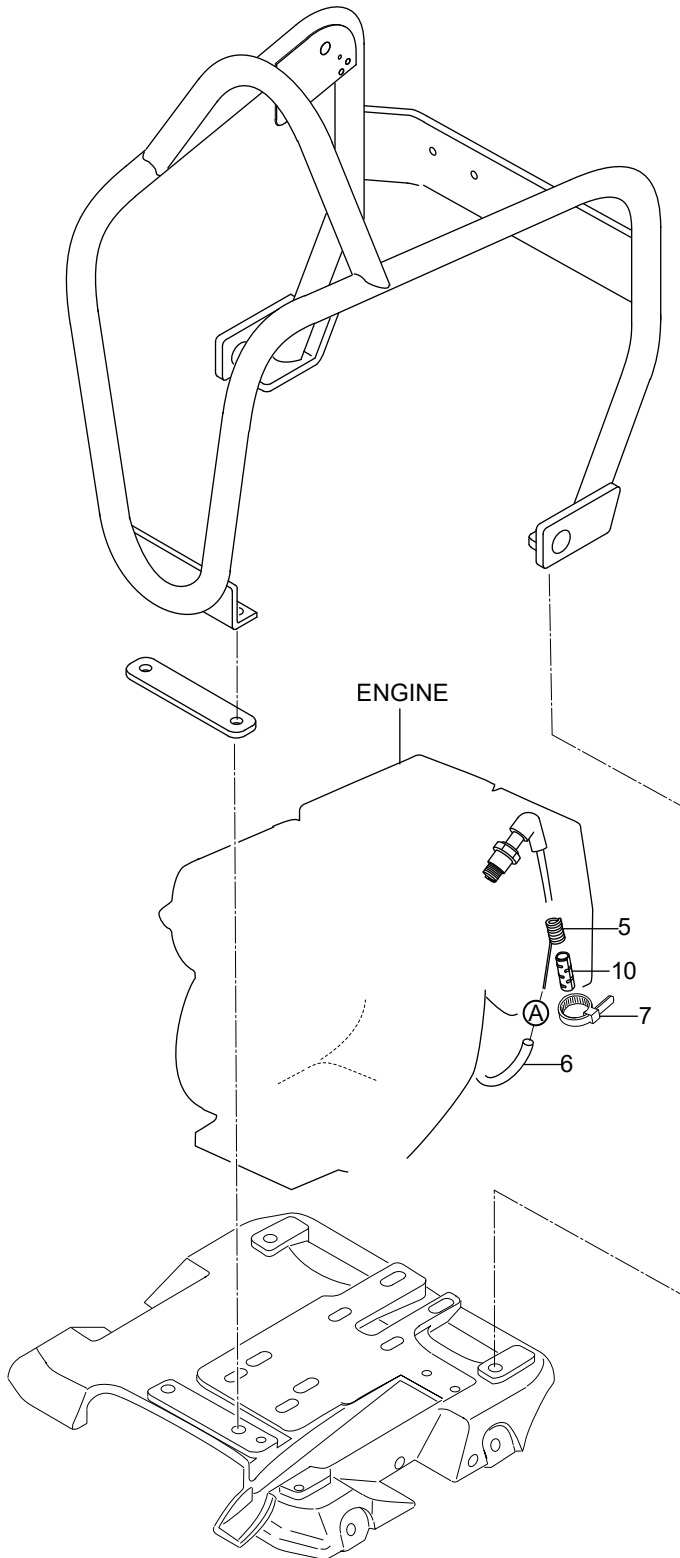
6. NAME PLATES

** 4UJ **

REF NO.	PART NO.	PART NAME	Q' TY	MRK	MK2	REMARKS
A	9209-00090	DECAL, SET/MVC-MCD/EXP, EU	1		**	INCL. 3-6
1	9202-21410	SERIAL NO. PLATE/T90H/5CE	1			5LANGUAGES
1	9202-21420	SERIAL NO. PLATE/T90HVAS5	1			5LANGUAGES
2	9202-18170	DECAL, POSITION, APO. /T90	1		**	
3	9202-14730	DECAL, DO NOT LIFTING	1	SET	!R044	9209-00090
4	9202-14740	DECAL, LIFTING POSITION	1	SET	!R044	9209-00090
5	9202-14790	DECAL, CAUTION ICONS	1	SET	!!920	9209-00090
6	9202-14800	DECAL, ENGINE HANDLING /GS	1	SET	!9209	9209-00090
13	9202-08350	DECAL, V-BELT RPF3330	1		**	
21	9202-18750	DECAL, CAUTION	1			MQ
22	9202-18740	DECAL, CAUTION	1			MQ
31	9201-01410	DECAL, MIKASA MARK 120X60	1			
32	9201-14000	DECAL, MIKASA (125MM) BLACK	1		**	
41	9202-06290	DECAL, CAUTION (MANUAL/EXP	1			MQ
43	9202-12320	DECAL, FUEL CAUTION/MVC	1			MQ
53	9202-18770	DECAL, E/G FIRE WARNING	1			MQ
54	9202-20740	DECAL HANDLE AY/CAUTION	1			MQ
91	9202-15500	DECAL, HUTTER 30 X 140	1			HUTTER
92	9202-11220	DECAL, HUTTER MARK D60	1			HUTTER
111	9202-07820	DECAL, IMER	1		SS!0J	IMER
121	9202-10330	DECAL, EC NOISE REQ. LWA105	1			
131	9202-18190	DECAL, HUTTER 40X230/T90H	1			HUTTER
201	87519-Z4H-010	MARK, OP-CAUTION (PICTO)	1			EU GX160
203	87539-Z4M-800	MARK. EX. CAUTION (PICTOGRAP	1			EU GX160

TACHO&HOUR METER (OPTION)

タコアワーメーター(オプション)



Mikasa



Flextool

1956 Dandenong Road, Clayton VIC 3168, Australia

Phone: 1300 353 986

flextool.com.au

ABN 80 069 961 968

This manual summarises our best knowledge of the product based on the information available at the time of publication. You should read this manual carefully and consider the information in the context of how the product will be used. Our responsibility for products sold is subject to our standard terms and conditions of sale.

DISCLAIMER:

Any advice, recommendation, information, assistance or service provided by us in this manual is given in good faith and is believed by us to be appropriate and reliable. However, any advice, recommendation, information, assistance or service provided by us is provided without liability or responsibility PROVIDED THAT the foregoing shall not exclude, limit, restrict or modify the right entitlements and remedies conferred upon any person or the liabilities imposed upon us by any condition or warranty implied by Commonwealth, State or Territory Act or ordinance void or prohibiting such exclusion limitation or modification. The product can be expected to perform as indicated in this manual so long as operation and operational procedures of the individual products are followed as recommended in this manual.

Design and technical specifications may be subject to changes.

© This publication is copyright. All rights are reserved. Flextool is a registered trade mark of Parchem Construction Supplies Pty Ltd. Mikasa is a registered trade mark of Mikasa Sangyo Co. Ltd, used under licence.

FOR MORE INFORMATION
CONTACT US ON **1300 353 986** OR VISIT flextool.com.au

EXCLUSIVE TO

