



# SPARE PARTS MANUAL

## FLEXTOOL TUFFTRUK® EB800



Version 1.0 (July 2024)

FOR MORE INFORMATION VISIT [flextool.com.au](https://flextool.com.au)

## **Flextool TuffTruk EB800 Mini Dumper**

Explanation Of Code In Remarks Column.....	4
Suggested Spare Parts .....	5

### **Component Drawings**

Nameplate And Decals Assembly .....	6-7
Handlebar Assembly .....	8-9
Steering Column Assembly .....	10-11
Steering Motor Assembly .....	12-13
Tipping Frame .....	14-15
Front Chassis Assembly .....	16-17
Centre Pivot Assembly .....	18-19
Rear Chassis Assembly .....	20-23
Footplate Assembly .....	23-24
Control Panel Assembly .....	25-26
Potentiometer Assembly.....	27-28
Controller Assembly .....	29-30
Charger Assembly .....	31-32
Battery Assembly .....	33-34
Hydraulic System Assembly .....	35-36
Standard Skip .....	37-38

#### **NOTICE**

Specifications are subject to change without notice.



# EXPLANATION OF CODE IN REMARKS COLUMN

The following section explains the different symbols and remarks used in the Parts section of this manual. Use the help numbers found on the back page of the manual if there are any questions.

**NOTICE**

The contents and part numbers listed in the parts section are subject to change **without notice**. Flextool does not guarantee the availability of the parts listed.

## SAMPLE PARTS LIST

NO.	PART NO.	PART NAME	QTY.	REMARKS
1	12345	BOLT .....	1...	INCLUDES ITEMS W/%
2%		WASHER, 1/4 IN. ....		NOT SOLD SEPARATELY
2%	12347	WASHER, 3/8 IN. ..1 ....		45T ONLY
3	12348	HOSE .....	A/R.	MAKE LOCALLY
4	12349	BEARING .....	1 ...	S/N 2345B AND ABOVE

## NO. Column

**Unique Symbols** — All items with same unique symbol (@, #, +, %, or >) in the number column belong to the same assembly or kit, which is indicated by a note in the “Remarks” column.

**Duplicate Item Numbers** — Duplicate numbers indicate multiple part numbers, which are in effect for the same general item, such as different size saw blade guards in use or a part that has been updated on newer versions of the same machine.

**NOTICE**

When ordering a part that has more than one item number listed, check the remarks column for help in determining the proper part to order.

## PART NO. Column

**Numbers Used** — Part numbers can be indicated by a number, a blank entry, or TBD.

TBD (To Be Determined) is generally used to show a part that has not been assigned a formal part number at the time of publication.

A blank entry generally indicates that the item is not sold separately or is not sold by Flextool. Other entries will be clarified in the “Remarks” Column.

## QTY. Column

**Numbers Used** — Item quantity can be indicated by a number, a blank entry, or A/R.

A/R (As Required) is generally used for hoses or other parts that are sold in bulk and cut to length.

A blank entry generally indicates that the item is not sold separately. Other entries will be clarified in the “Remarks” Column.

## REMARKS Column

Some of the most common notes found in the “Remarks” Column are listed below. Other additional notes needed to describe the item can also be shown.

**Assembly/Kit** — All items on the parts list with the same unique symbol will be included when this item is purchased.

Indicated by:

“INCLUDES ITEMS W/(unique symbol)”

**Serial Number Break** — Used to list an effective serial number range where a particular part is used.

Indicated by:

“S/N XXXXX AND BELOW”

“S/N XXXX AND ABOVE”

“S/N XXXX TO S/N XXX”

**Specific Model Number Use** — Indicates that the part is used only with the specific model number or model number variant listed. It can also be used to show a part is NOT used on a specific model or model number variant.

Indicated by:

“XXXXX ONLY”

“NOT USED ON XXXX”

**“Make/Obtain Locally”** — Indicates that the part can be purchased at any hardware shop or made out of available items. Examples include battery cables, shims, and certain washers and nuts.

**“Not Sold Separately”** — Indicates that an item cannot be purchased as a separate item and is either part of an assembly/kit that can be purchased, or is not available for sale through Flextool.

## SUGGESTED SPARE PARTS

### FLEXTOOL TUFFTRUK EB800 MINI DUMPER

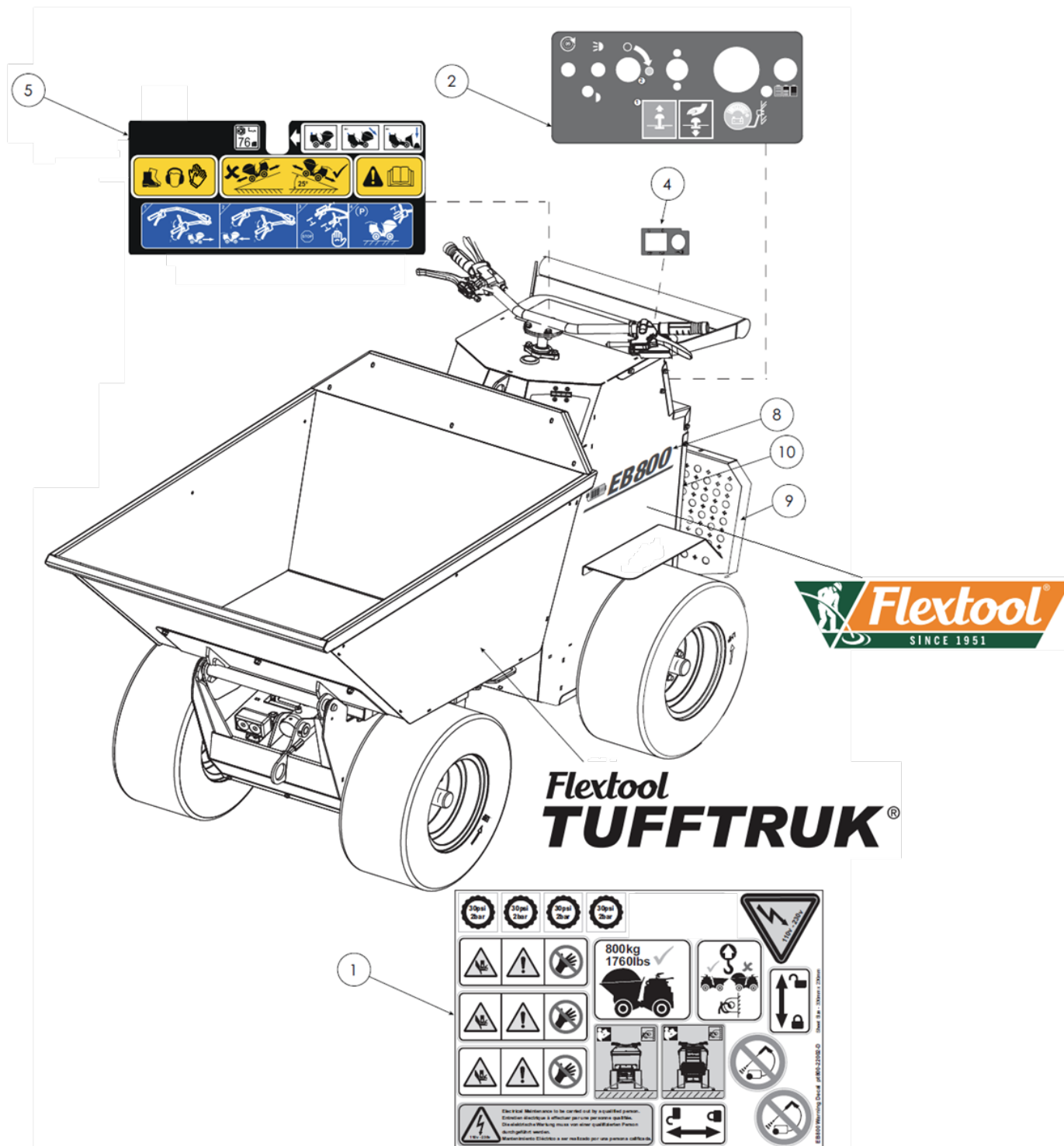
1 to 3 units

Qty.	P/N	Description
1	75-03200	REVERSE LEVER / CABLE
1	75-03100	FORWARD LEVER / CABLE
1	75-03300	DEADMAN LEVER / CABLE
2	74-1022	HANDLE
1	109-01500RED	ARTICULATION LOCKING PIN
1	3-1020	LYNCH PIN
2	2-1500	DAMPER
1	109-00602	TIP RELEASE CATCH
1	109-00603	TIP RELEASE HANDLE
2	72-3800	HUB COVER
16	8-12012	WHEEL NUT M12 X 1.5
1	70-0197	200 AMP MEGA FUSE 200 AMP
1	70-8004	IGNITION KEY
1	70-0188	FUSE 10AMP
1	70-0140	POTENTIOMETER
1	2-1014	SPRING

#### NOTICE

Part numbers on this Suggested Spare Parts list may supersede/replace the part numbers shown in the following parts lists.

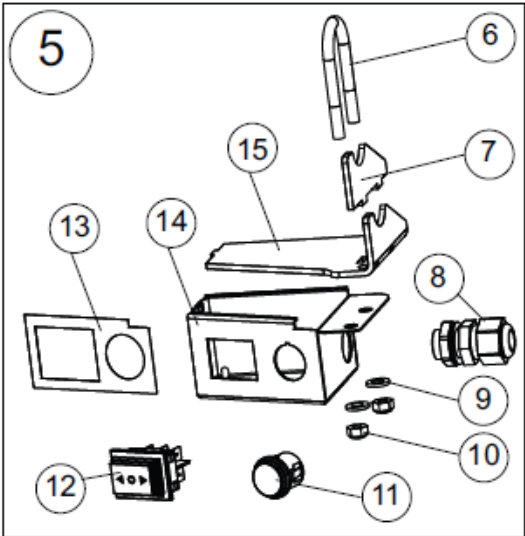
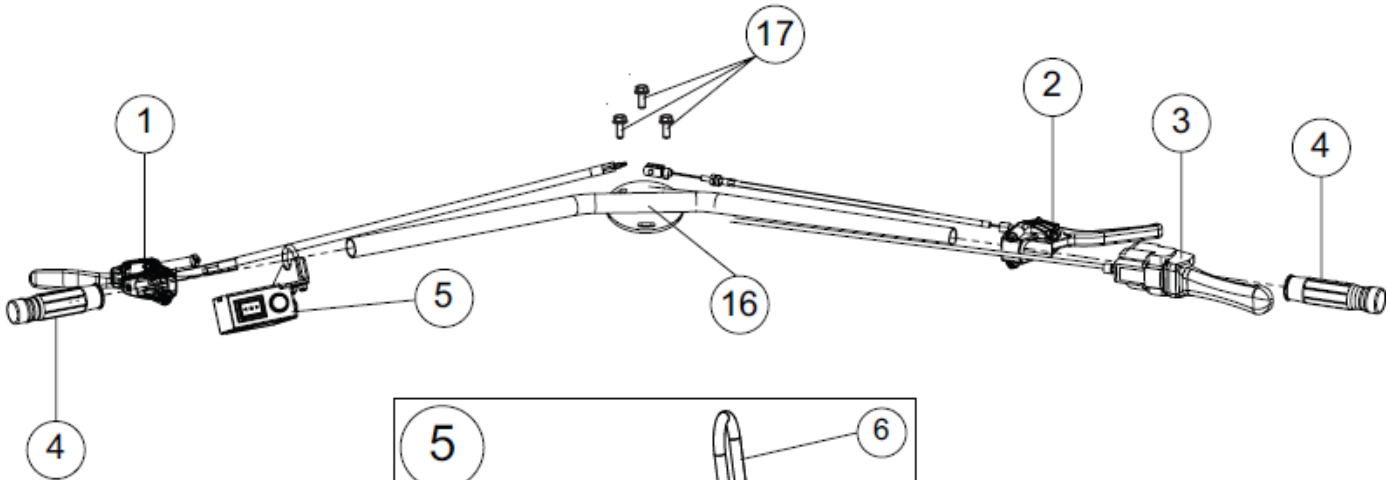
# NAMEPLATE AND DECALS ASSY.



## NAMEPLATE AND DECALS ASSY.

<u>NO.</u>	<u>PART NO.</u>	<u>PART NAME</u>	<u>QTY.</u>	<u>REMARKS</u>
1	800-22002	SAFETY DECAL SHEET	1	
2	800-22003	CONTROL PANEL DECAL	1	
3	800-17511	DECAL RACK PORT ID	1	
4	800-17516	DECAL TIP CONTROL	1	
5	800-22001	DECAL OPERATING INSTRUCTION	1	
6	800-15047	MEDIUM DECAL PRE-SPACED BENDIE	1	
8	800-17513	EB800 DECAL SIDE	2	
9	800-17514	RED REFLECTIVE STRIP 200MM X 30MM	4	
10	800-15074	ZERO EMISSIONS DECAL	1	
	800-22004	BERGMANN EB800 SKIP DECAL	2	
	800-22005	BERGMANN EB800 C301L DECAL	4	
	800-22006	BERGMANN EB800 BATTERY DECAL	1	

# HANDLEBAR ASSY.

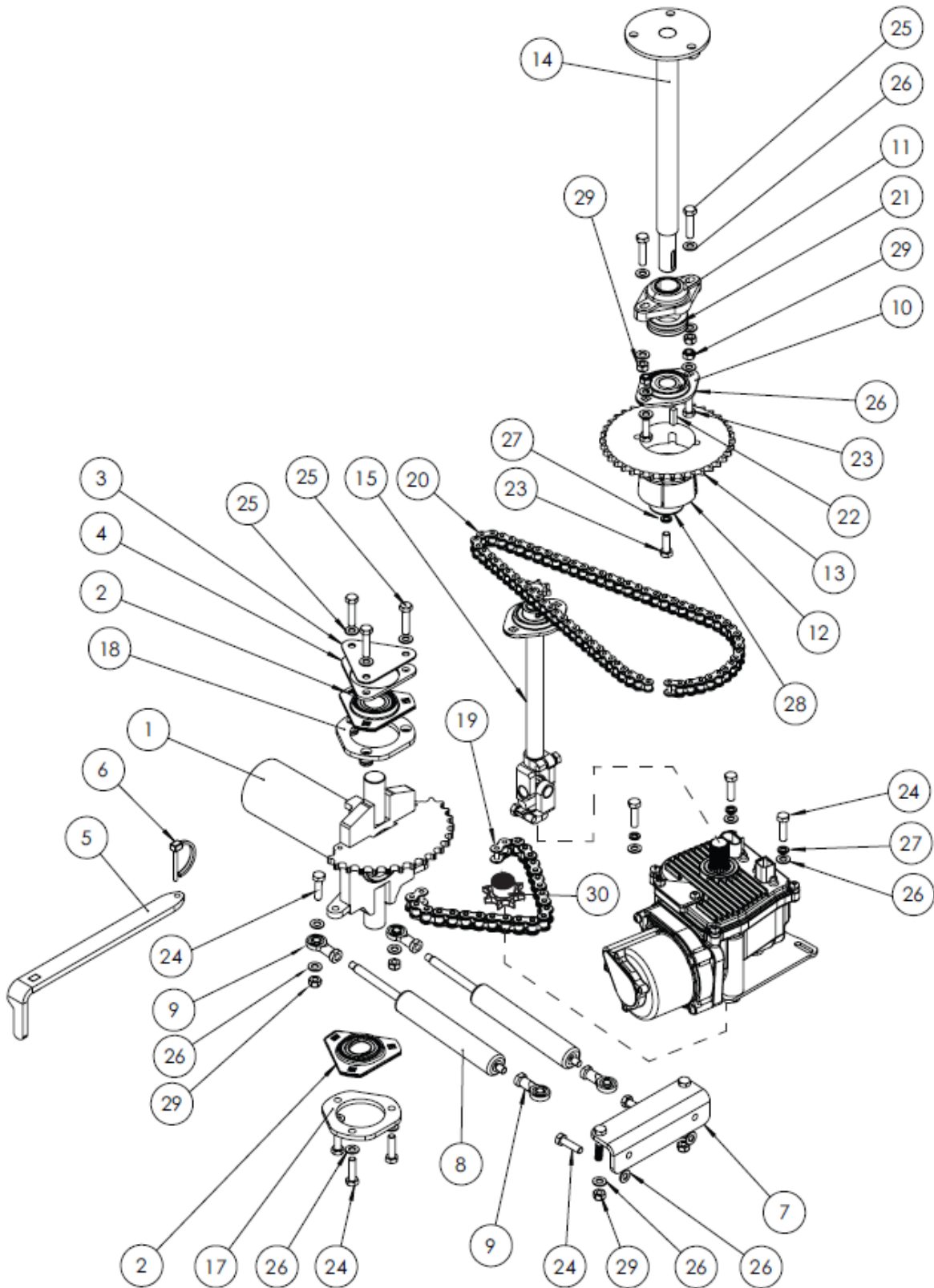




## HANDLEBAR ASSY.

<u>NO.</u>	<u>PART NO.</u>	<u>PART NAME</u>	<u>QTY.</u>	<u>REMARKS</u>
1	75-03200	REVERSE LEVER / CABLE	1	
2	75-03100	FORWARD LEVER / CABLE	1	
3	75-03300	DEADMAN LEVER / CABLE	1	
4	74-1022	HANDLE GRIP	2	
5	109-04600	TIP CONTROL	1	
6	109-04703	U BOLT	1	
7	109-04702	PRESSING PLATE	1	
8	70-5032	CABLE GLAND	1	
9	4-6001	WASHER M6	2	
10	8-6007	NUT M6 NYLOC	2	
11	70-9120	HORN BUTTON M6	1	
12	70-0304	TIP SWITCH	1	
13	800-17516	DECAL	1	
14	109-99948	PRESSING BOX	1	
15	109-04701	PRESSING TOP PLATE	1	
16	109-01900	HANDLE	1	
17	7-8080	BOLT M8 X 20	3	

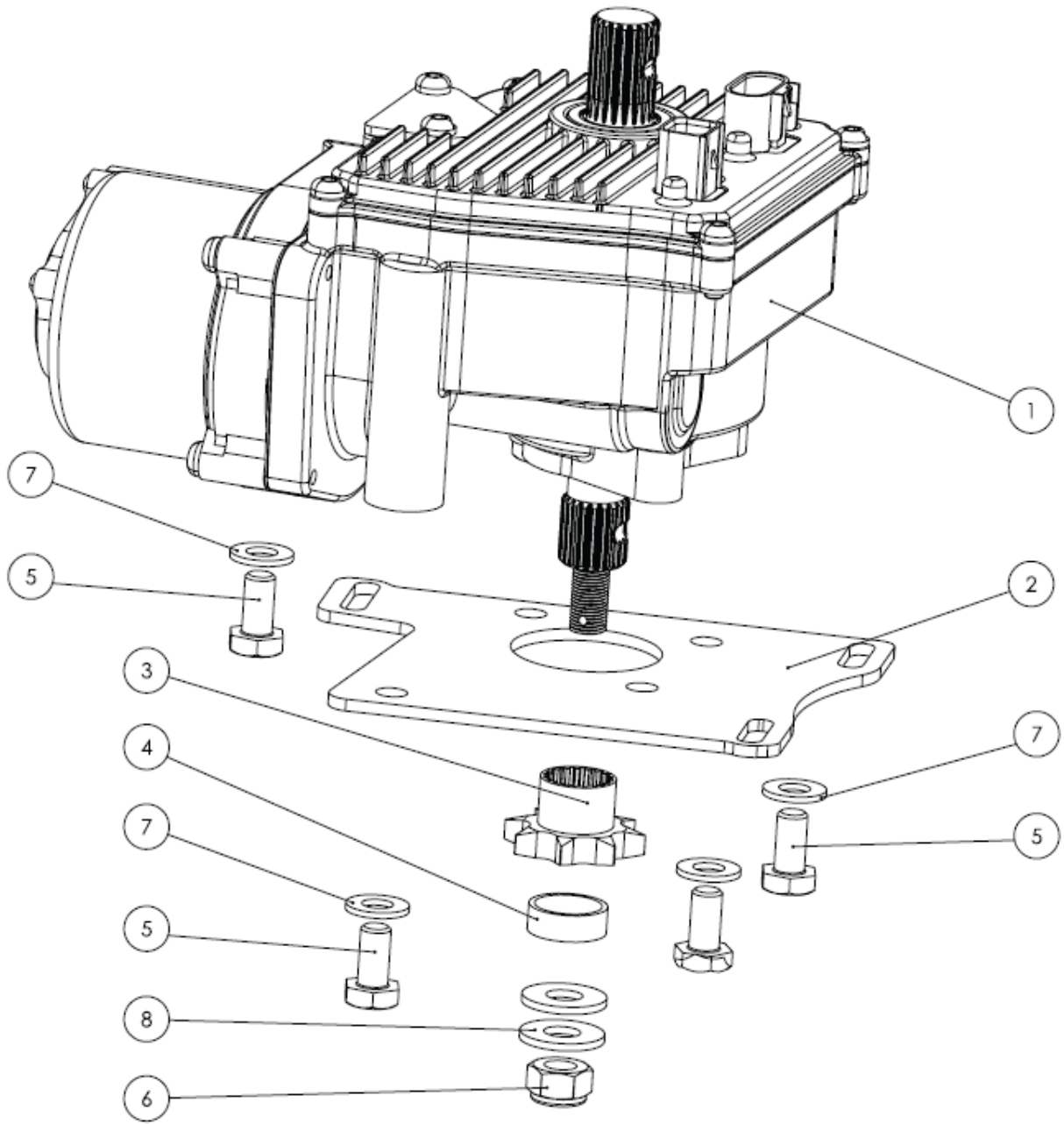
# STEERING COLUMN ASSY.



## STEERING COLUMN ASSY.

<u>NO.</u>	<u>PART NO.</u>	<u>PART NAME</u>	<u>QTY.</u>	<u>REMARKS</u>
1	109-00400	GIMBLE	1	
2	53-0191	BEARING	2	
3	109-99908	BEARING CAP	1	
4	109-99907	BEARING SPACER	1	
5	109-01500	ARTICULATION LOCKING PIN	1	
6	3-1020	LYNCH PIN	1	
7	109-02500	DAMPER MOUNT REAR	1	
8	2-1500	DAMPER	2	
9	3-6030	SWIVEL EYE	4	
10	53-0180	BEARING	1	
11	53-0192	FLANGE BEARING	1	
12	21-4340	TAPER BUSH - METRIC	1	
13	21-4356	TAPER BORE SPROCKET 38T	1	
14	109-03000	HANDLE STEERING SHAFT	1	
15	109-03200	MOTOR STEERING SHAFT	1	
17	109-99933	BEARING SUPPORT	1	
18	109-05500	BEARING SUPPORT	1	
19	21-4355	CHAIN 24 LINKS	1	
20	21-4354	CHAIN 70 LINKS	1	
21	3-4027	GROMMET	1	
22	21-4201	KEY 6 X 6	1	
23	7-8012	SCREW M8 X 25	3	
24	7-8009	SCREW M8 X 30	10	
25	7-8007	BOLT M8 X 30	5	
26	4-8006	WASHER M8	25	
27	4-8003	WASHER SPRING M8	4	
28	4-8021	WASHER M8 X 40	1	
29	8-8008	NUT NYLOC M8	8	
30	21-4350	SPROCKET 8T	1	

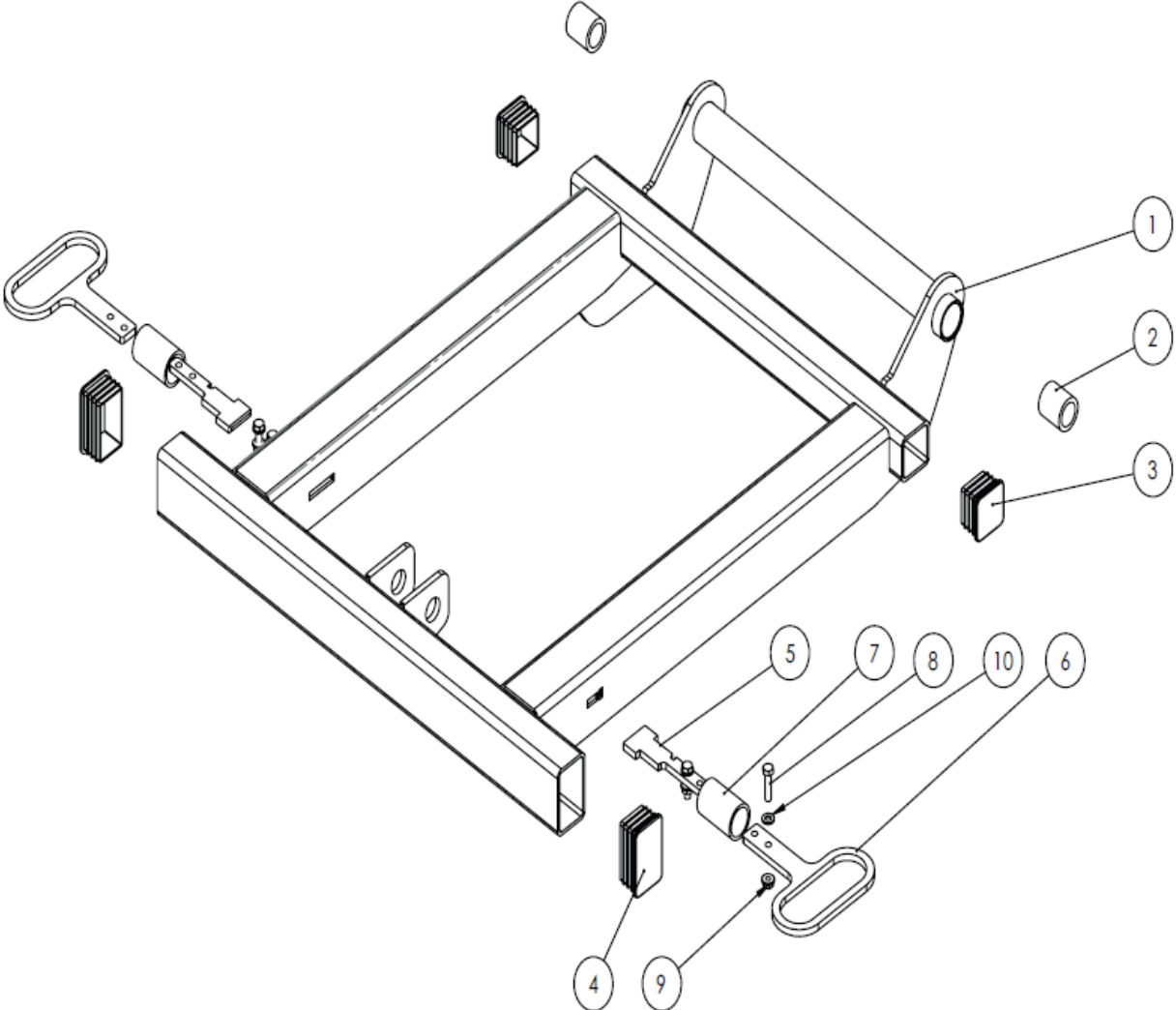
# STEERING MOTOR ASSY.



## STEERING MOTOR ASSY.

<u>NO.</u>	<u>PART NO.</u>	<u>PART NAME</u>	<u>QTY.</u>	<u>REMARKS</u>
1	70-9010	STEERING MOTOR	1	
2	109-99932	POWER STEER ADJUSTER PLATE	1	
3	21-4350	10B 8 TOOTH SIMPLEX SPROCKET	1	
4	109-99937	EB800 STEERING OUTPUT SPACER	1	
5	7-10004	SCREW SET M10 X 20 BZP	4	
6	8-12007	NUT NYLOC M12 X 1.25 FINE	1	
7	4-1005	WASHER FLAT M10	4	

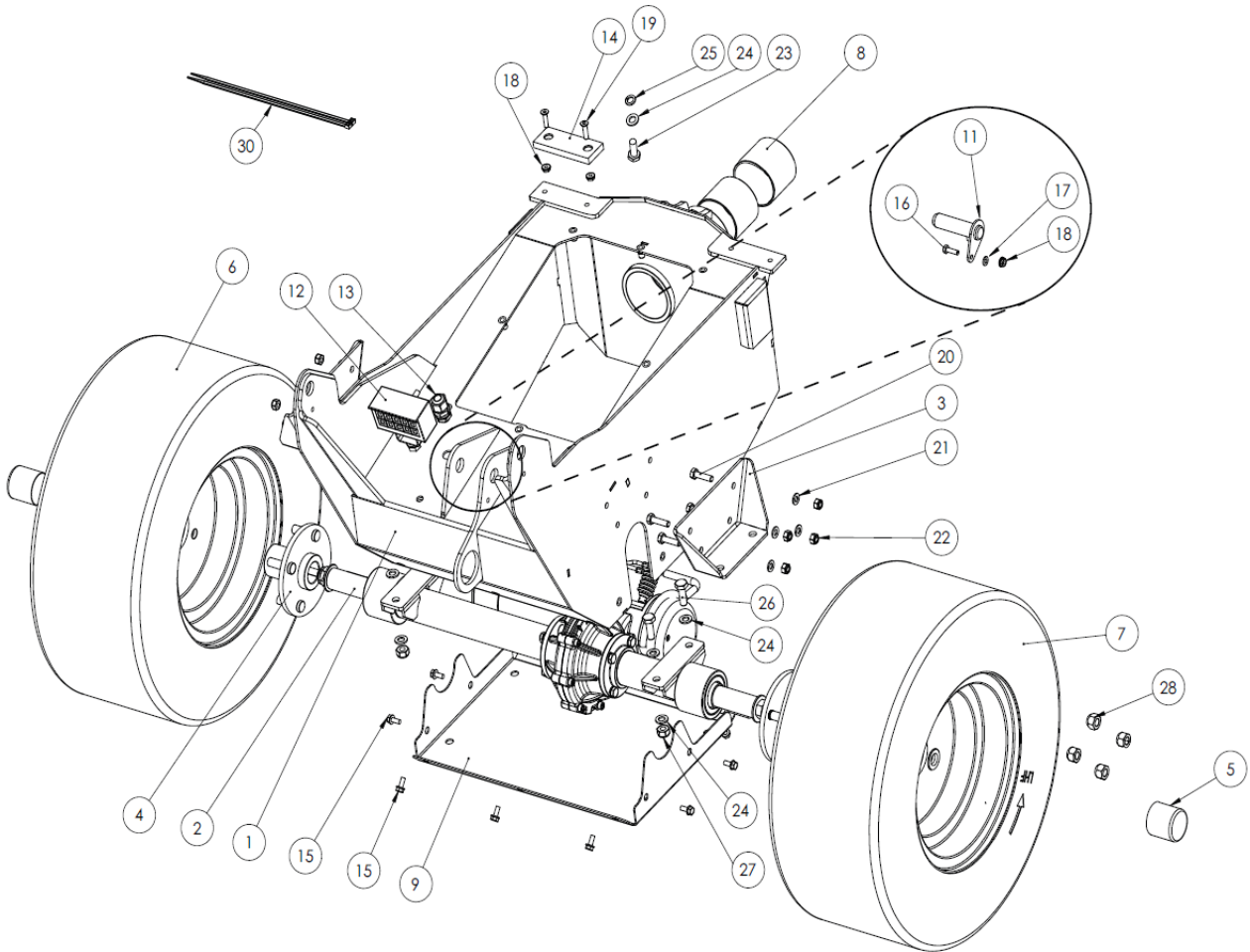
# TIPPING FRAME



## TIPPING FRAME

<u>NO.</u>	<u>PART NO.</u>	<u>PART NAME</u>	<u>QTY.</u>	<u>REMARKS</u>
1	109-00300GG	TIPPING FRAME GOOSE GREY	1	
1	109-00300DG	TIPPING FRAME DARK GREY	1	
2	53-0199	BUSH	2	
3	72-2300	TUBE INSERT	2	
4	72-3700	TUBE INSERT	2	
5	109-00602	TIP RELEASE CATCH	2	
6	109-00603	TIP RELEASE HANDLE	2	
7	2-1024	SPRING	2	
8	7-6025	SCREW M6 X 25	4	
9	8-6031	NUT FLANGE M6	4	
10	4-6001	WASHER M6	4	

# FRONT CHASSIS ASSY.

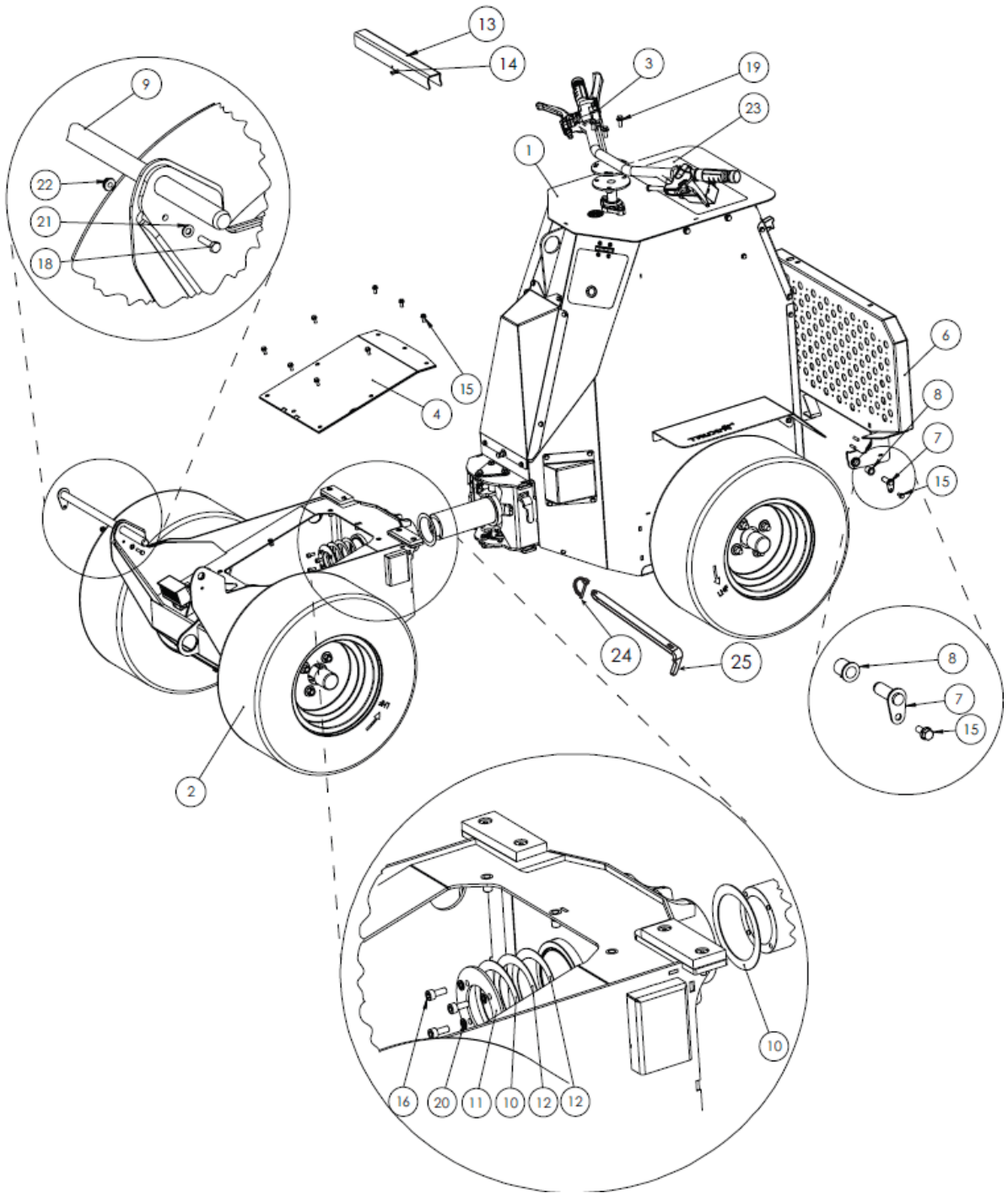




## FRONT CHASSIS ASSY.

<u>NO.</u>	<u>PART NO.</u>	<u>PART NAME</u>	<u>QTY.</u>	<u>REMARKS</u>
1	109-00100GGSP	FRONT CHASSIS -RIVNUTS GOOSE	1	
1	109-00100DGSP	FRONT CHASSIS - RIVNUTS DARK		
2	70-9000	TRANSAXLE 24V 1400W	1	
3	109-99930GG	TRANSAXLE MOUNTS GOOSE GREY	2	
3	109-99930DG	TRANSAXLE MOUNTS DARK GREY		
4	109-04800	WHEEL HUB ASSY - 4 STUD	2	
5	72-3800	HUB COVER	2	
6	60-1400RHF	WHEEL / TYRE 20X8X10 RHS	1	
7	60-1400LHF	WHEEL / TYRE20X8X10 LHS	1	
8	53-0198	BEARING	2	
9	109-99905GG	BELLY PAN FRONT GOOSE GREY	1	
9	109-99905DG	BELLY PAN FRONT DARK GREY		
10		HYDRAULIC KIT STD	1	
11	109-05700	PIVOT PIN	1	
12	70-9051	LED LIGHT 12/24V	1	
13	70-5032	CABLE GLAND	1	
14	3-3110	BUFFER	2	
15	7-6060	SCREW M6 X 14	10	
16	7-6026	SCREW SET M6 X 20	1	
17	4-6001	WASHER M6	1	
18	8-6031	SERRATED FLANGE NUT M6	3	
19	7-6012	SCREW CSK M6 X25 CSK	4	
20	7-8009	SCREW M8 X 30	8	
21	4-8006	WASHER M8	16	
22	8-8008	NUT NYLOC M8	8	
23	7-10005	SCREW M10 X 25	2	
24	4-1007	WASHER M10	10	
25	4-1003	WASHER SPRING M10	2	
26	7-10100	BOLT M10 X 30 - HT10.9	4	
27	8-10001	NUT BINX M10	4	
28	8-12012	WHEEL NUT M12 X 1.5	8	
29	53-0202	GREASE NIPPLE M8	2	

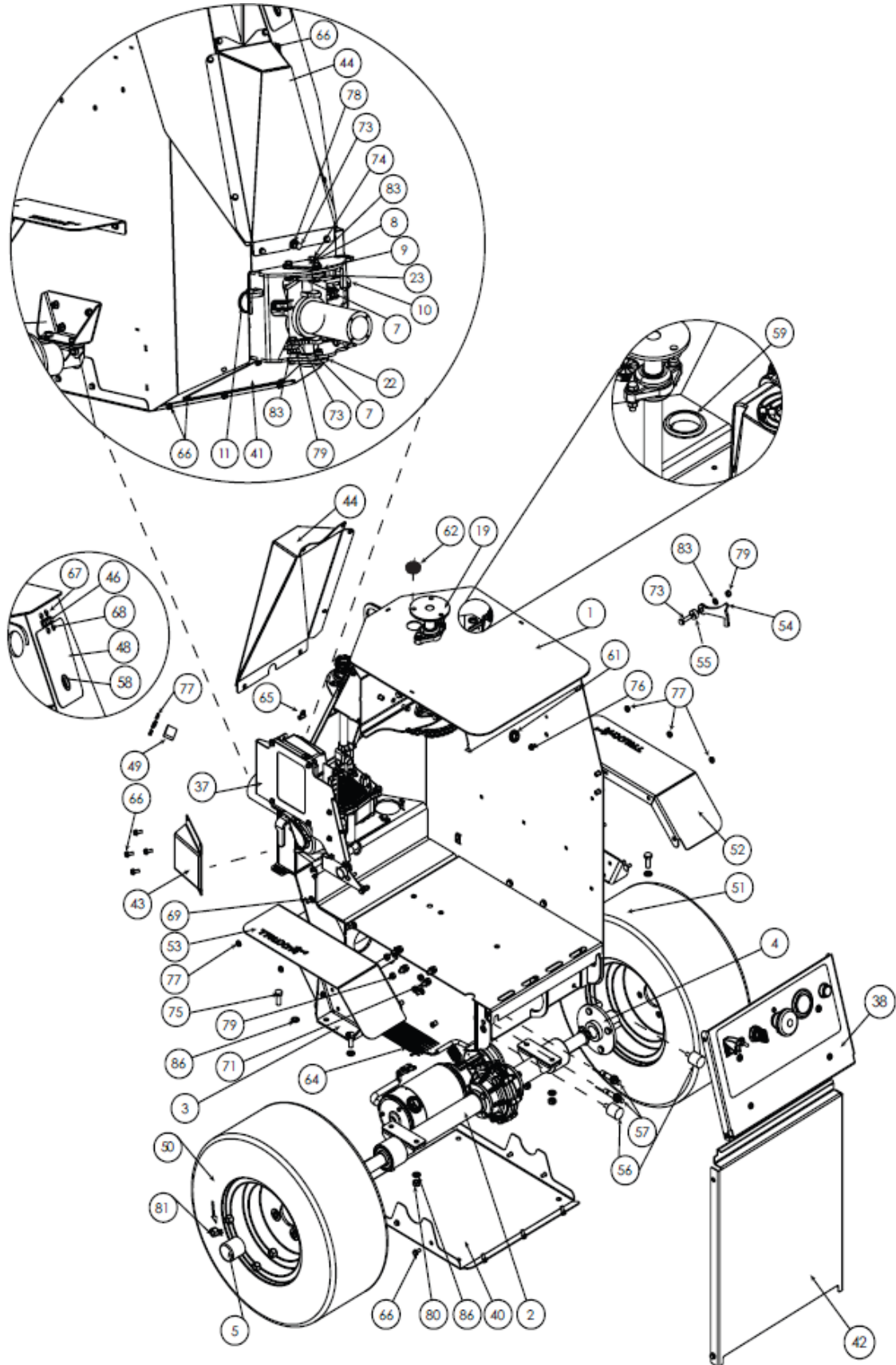
# CENTRE PIVOT ASSEMBLY



## CENTRE PIVOT ASSEMBLY

<u>NO.</u>	<u>PART NO.</u>	<u>PART NAME</u>	<u>QTY.</u>	<u>REMARKS</u>
1		REAR GA EB800PT	1	
2		FRONT GA EB800PT	1	
3		HANDLEBAR GA EB800PT	1	
4	109-05800SPGG	COVER ACCESS GOOSE GREY	1	
4	109-05800SPDG	COVER ACCESS DARK GREY		
5	109-05700	PIVOT PIN	1	
6	109-01700	FOOTPLATE	1	
7	109-02600	STEP PIVOT	2	
8	53-0196	TOP HAT	2	
9	109-00500	TIPPING BAR	1	
10	4-9004	SUPPORT WASHER	2	
11	109-99911	GIMBAL LOCK DISC	1	
12	4-9007	WAVE WASHER	2	
13	109-99952	JURY STRUT	1	
14	3-2004	R CLIP	1	
15	7-6060	SCREW M6 X 14	10	
16	7-6066	CAP HD M16 X15	4	
17	7-6026	SCREW SET M6 X 20	1	
18	7-6025	BOLT M6 X25	1	
19	7-8080	BOLT SERRATED HD M8 X 20	3	
20	4-6005	WASHER SPRING M6	4	
21	4-6001	WASHER FORM M6	2	
22	8-6031	NUT FLANGE M6	2	

# REAR CHASSIS ASSEMBLY



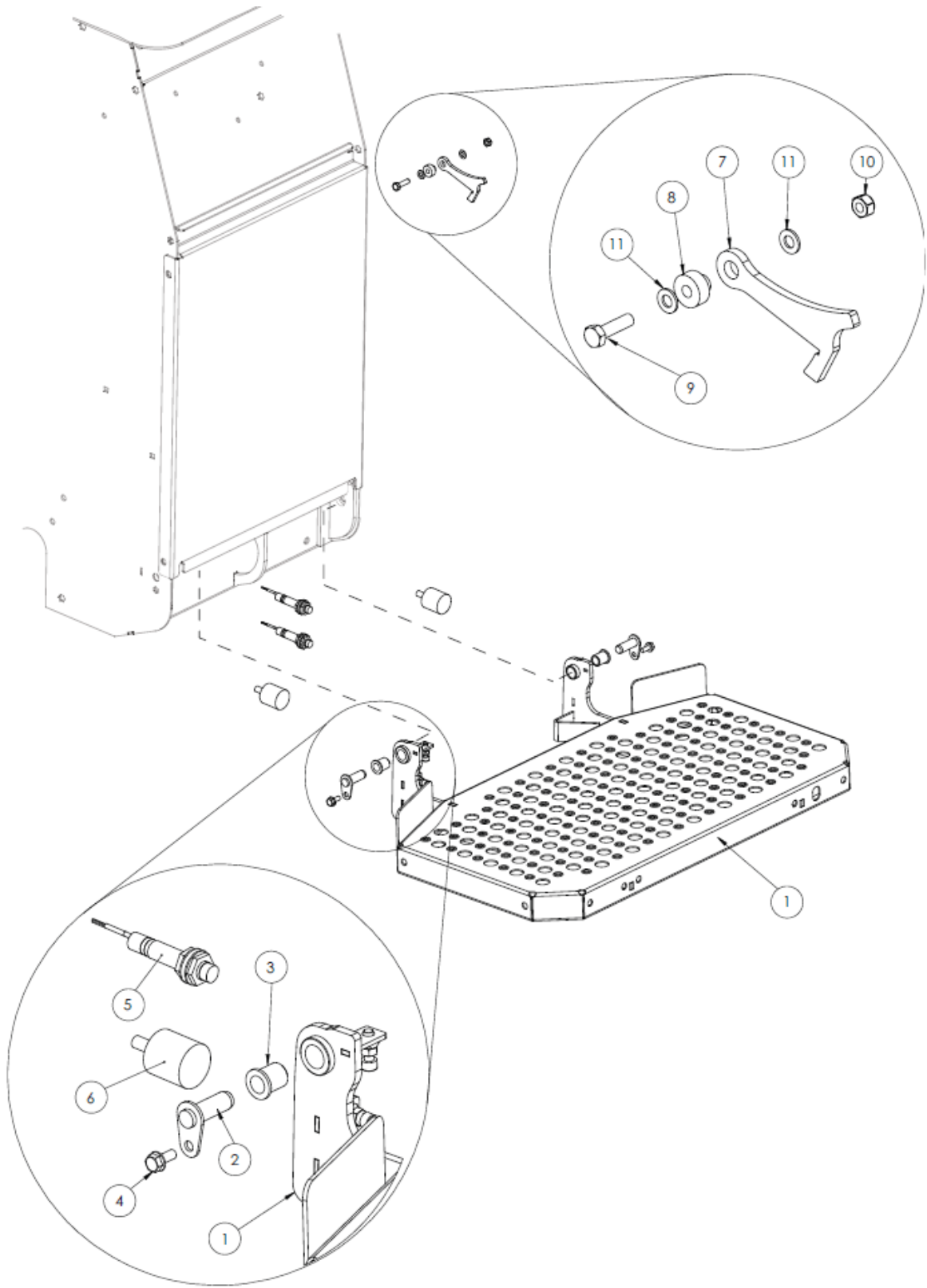
## REAR CHASSIS ASSEMBLY

<u>NO.</u>	<u>PART NO.</u>	<u>PART NAME</u>	<u>QTY.</u>	<u>REMARKS</u>
1	109-00200GGSP	REAR CHASSIS GOOSE GREY	1	
2	70-9000	TRANSAXLE 24V 1400W	1	
3	109-99930GG	AXLE MOUNT GOOSE GREY	2	
3	109-99930DG	AXLE MOUNT DARK GREY	2	
4	109-04800	WHEEL HUB ASSY - 4 STUD	2	
5	72-3800	MOULDING HUB COVER	2	
6	109-00400	GIMBLE	1	
7	53-0191	BEARING	2	
8	109-99908	BEARING CAP	1	
9	109-99907	BEARING SPACER	1	
10	109-01500	ARTICULATION LOCKING PIN	1	
11	3-1020	LYNCH PIN	1	
19	109-03000	STEERING SHAFT WA	1	
22	109-99933	PLATE TRI BEARING SUPPORT	1	
23	109-05500	BEARING SUPPORT TRI WA	1	
40	109-99903GG	BELLY PAN REAR GOOSE GREY	1	
41	109-99904GG	ACCESS PLATE LOWER GOOSE GREY	1	
42	109-99915GG	REAR PANEL GOOSE GREY	1	
43	109-99935GG	STEER MOTOR COWL GOOSE GREY	1	
44	109-99936ORH	STEERING UPPER COWL SPECIAL ORANGE	1	
46	73-1004	HINGE	1	
47	109-99926	HINGE SPACER	1	
48	109-99927GG	STORE FLAP GOOSE GREY BS00-A-05	1	
49	74-1053	CATCH MAGNETIC	1	
50	60-1400LHF	WHEEL / TYRE 20X8X10 LHS	1	
51	60-1400RHF	WHEEL / TYRE 20X8X10 RHS	1	
52	109-99917OG	RH MUDGUARD ORANGE	1	
53	109-99917OG	RH MUDGUARD ORANGE	1	
54	109-99928	STEP RETAINER	1	
55	109-99941	STEP RETAINER SPACER	1	
56	72-3900	BUFFER RUBBER	2	
57	70-9091	SWITCH PROXIMITY	2	
58	3-4025	OPEN GROMMET	1	
59	72-3100	GROMMET	1	
60	3-4027	GROMMET	1	
61	3-4030	GROMMET	1	
62	3-4031	BUSH	1	
64	1-0005	CABLE TIE	8	
65	3-7004	CLIP P	1	
66	7-6060	SCREW M6 X 14	38	
67	7-6056	SCREW HD CAP M6 X 15	2	
68	7-6057	SCREW M6 X 20	8	
69	7-6062	COACH BOLT M6 X 16	8	
70	7-8016	BOLT M6 X 16	4	
71	7-8011	BOLT M8 X 20	8	
72	7-8012	SCREW M8 X 25	3	
73	7-8009	SCREW M8 X 30	12	
74	7-8007	BOLT M8 X 30	5	
75	7-10100	BOLT M10 X 30 - HT10.9	4	
76	8-6007	NUT NYLOC M6	4	

## REAR CHASSIS ASSEMBLY

<u>NO.</u>	<u>PART NO.</u>	<u>PART NAME</u>	<u>QTY.</u>	<u>REMARKS</u>
77	8-6031	NUT FLANGE M6	12	
78	8-8001	NUT M8	1	
79	8-8008	NUT NYLOC M8	21	
80	8-10001	NUT BINX M10	4	
81	8-12012	WHEEL NUT M12 X 1.5	8	
82	4-6001	WASHER M6	6	
83	4-8006	WASHER M8	47	
84	4-8003	WASHER SPRING M8	4	
85	4-8021	WASHER REPAIR M8 X 40	1	
86	4-1007-A	WASHER FLAT M10 FORM A BZP M10	8	

# FOOTPLATE ASSY.

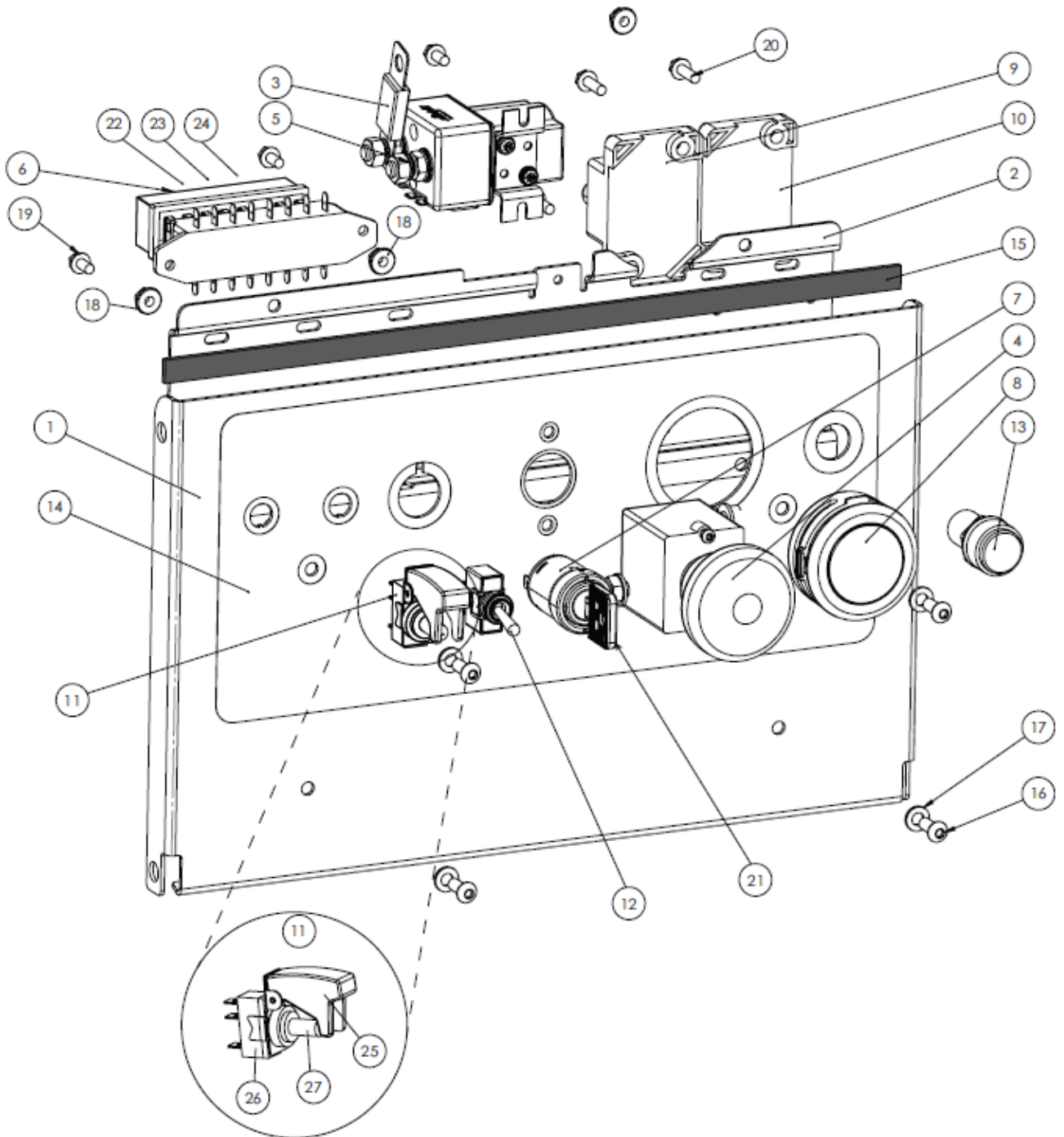


## FOOTPLATE ASSY.

<u>NO.</u>	<u>PART NO.</u>	<u>PART NAME</u>	<u>QTY.</u>	<u>REMARKS</u>
1	109-01700SP	FOOTPLATE	1	
2	109-02600	STEP PIVOT	2	
3	53-0196	TOP HAT	2	
4	7-6060	SCREW M6 X 14	2	
5	70-9091	SWITCH PROXIMITY	2	
6	72-3900	BUFFER RUBBER	2	
7	109-99928	STEP RETAINER	1	
8	109-99941	STEP RETAINER SPACER	1	
9	7-8009	SCREW M8 X 30	1	
10	8-8008	NUT NYLOC M8	1	
11	4-8006	WASHER M8	2	



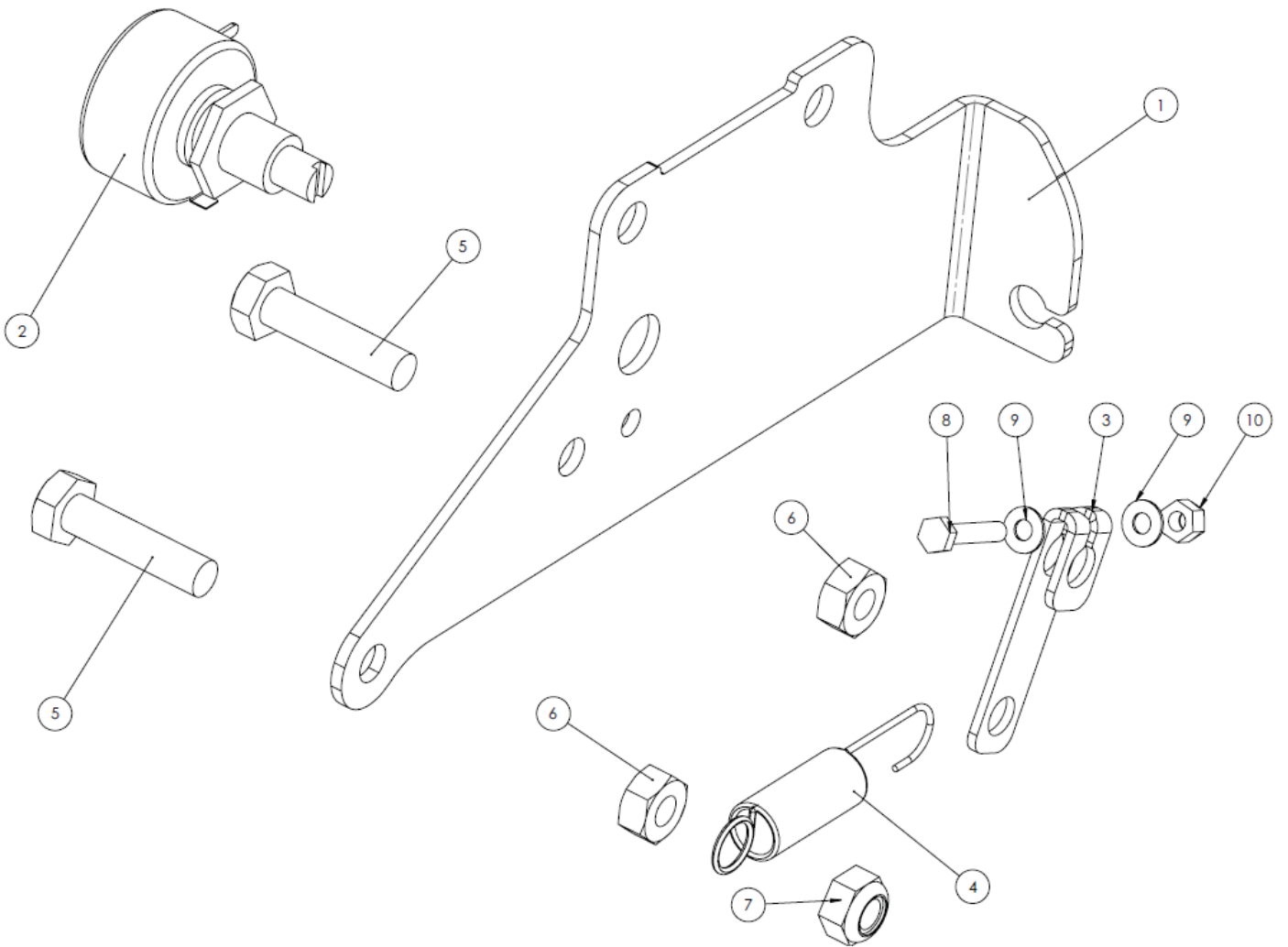
# CONTROL PANEL ASSY.



## CONTROL PANEL ASSY.

<u>NO.</u>	<u>PART NO.</u>	<u>PART NAME</u>	<u>QTY.</u>	<u>REMARKS</u>
1	109-99949GG	CONTROL PANEL GOOSE GREY	1	
1	109-99949DG	CONTROL PANEL DARK GREY		
2	109-99950	PRESSING BRACKET	1	
3	70-0197	200 AMP MEGA FUSE 200 AMP	1	
4	70-0127	E STOP	1	
5	70-8006	CONTACTOR	1	
6	70-0199	FUSE BOX	1	
7	70-8003	IGNITION SWITCH	1	
8	70-8005	FUEL GAUGE	1	
9	70-0229	FUSE 150A RESETTABLE	1	UPTO EB8221020
10	70-0231	FUSE 50A RESETTABLE	1	
11	70-0175SP	OVERRIDE SWITCH	1	
12	70-9090	LIGHT SWITCH	1	
13	70-9020	BATTERY CONDITION	1	
14	800-22003	DECAL CONTROL PANEL	1	
15	3-3109	GASKET	1	
16	7-6056	SCREW HD CAP M6 X 15	4	
17	4-6001	WASHER M6	4	
18	8-6031	NUT FLANGE M6	4	
19	7-5037	HEX HEAD TAPTITE M5 X10	4	
20	7-5038	HEX HEAD TAPTITE M5 X16	4	
21	70-8004	IGNITION KEY	1	
22	70-0154	FUSE 5AMP	5	
23	70-0188	FUSE 10AMP	1	
24	70-0201	FUSE 40AMP	1	
25	70-0185	OVERRIDE COVER	1	
26	70-0184	OVERRIDE SWITCH	1	
27	70-0186	RUBBER BOOT	2	

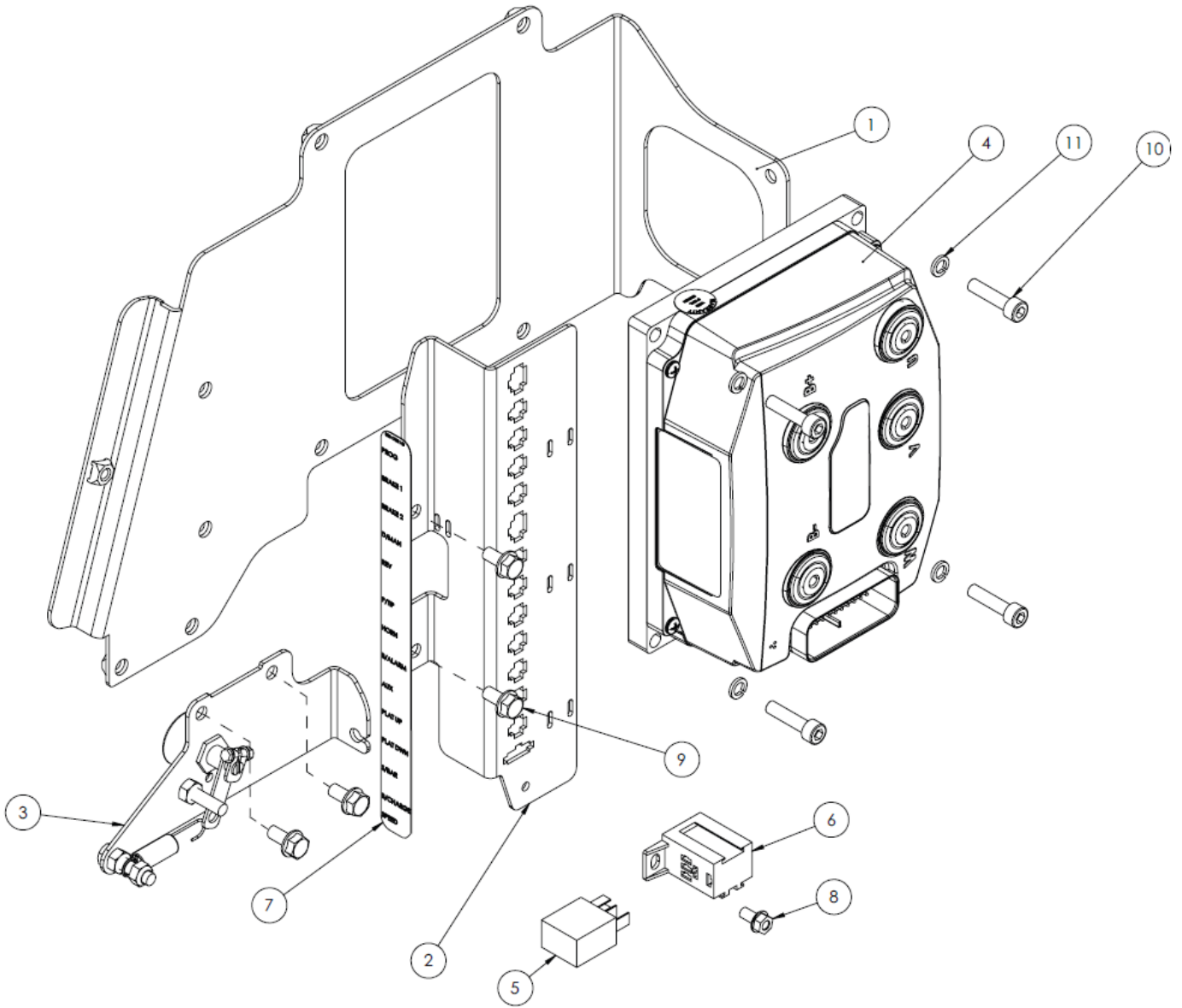
# POTENTIOMETER ASSY.



## POTENTIOMETER ASSY.

<u>NO.</u>	<u>PART NO.</u>	<u>PART NAME</u>	<u>QTY.</u>	<u>REMARKS</u>
1	105-99966	POTENTIOMETER BRACKET	1	
2	70-0140	POTENTIOMETER	1	
3	101-99975	CLAMP LEVER	1	
4	2-1014	SPRING	1	
5	7-6025	BOLT M6 X 25	2	
6	8-6001	NUT M6	2	
7	8-6007	NUT NYLOC M6	1	
8	7-3016	SETSCREW M3 X 16	1	
9	4-3001	WASHER M3	2	
10	8-3003	BINX NUT M3	1	

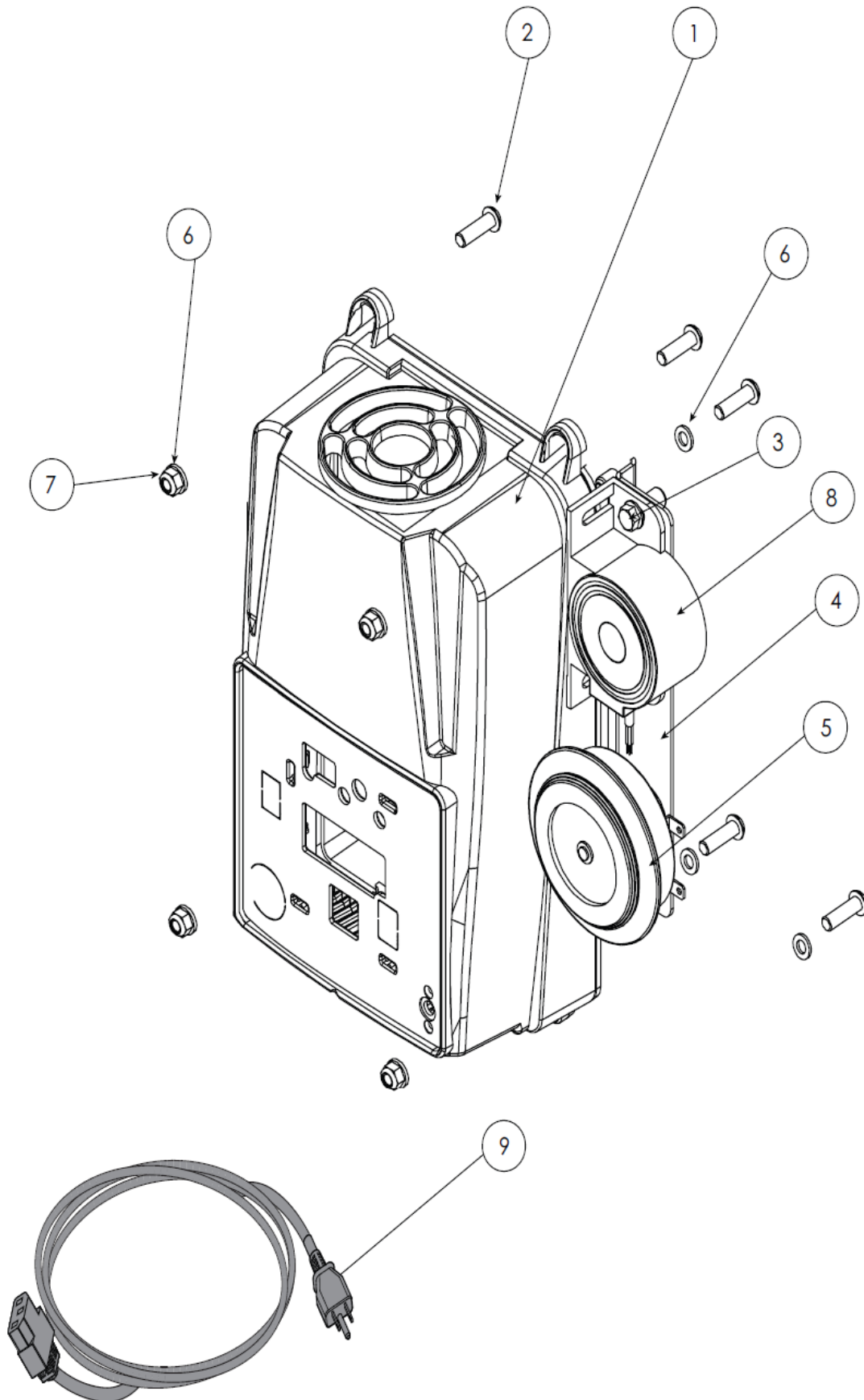
# CONTROLLER ASSY.



## CONTROLLER ASSY.

<u>NO.</u>	<u>PART NO.</u>	<u>PART NAME</u>	<u>QTY.</u>	<u>REMARKS</u>
1	109-02800	CONTROLLER MOUNTING	1	
2	109-99951	CONNECTOR RACK PLATE	1	
3	105-08800	POTENTIOMETER ASSY	1	
4	70-7003	CONTROLLER	1	
5	70-0226	RELAY 24V 35A 5-Pin SPDT	1	
6	70-0227	RELAY HOLDER	1	
7	800-17511	DECAL RACK PORT ID	1	
8	7-5037	HEX HEAD TAPTITE M5 X 10	1	
9	7-6064	SCREW M6 X 12	4	
10	7-6063	SCREW CAP M16 X 25	4	
11	4-6005	WASHER SPRING M6	4	

# CHARGER ASSY.

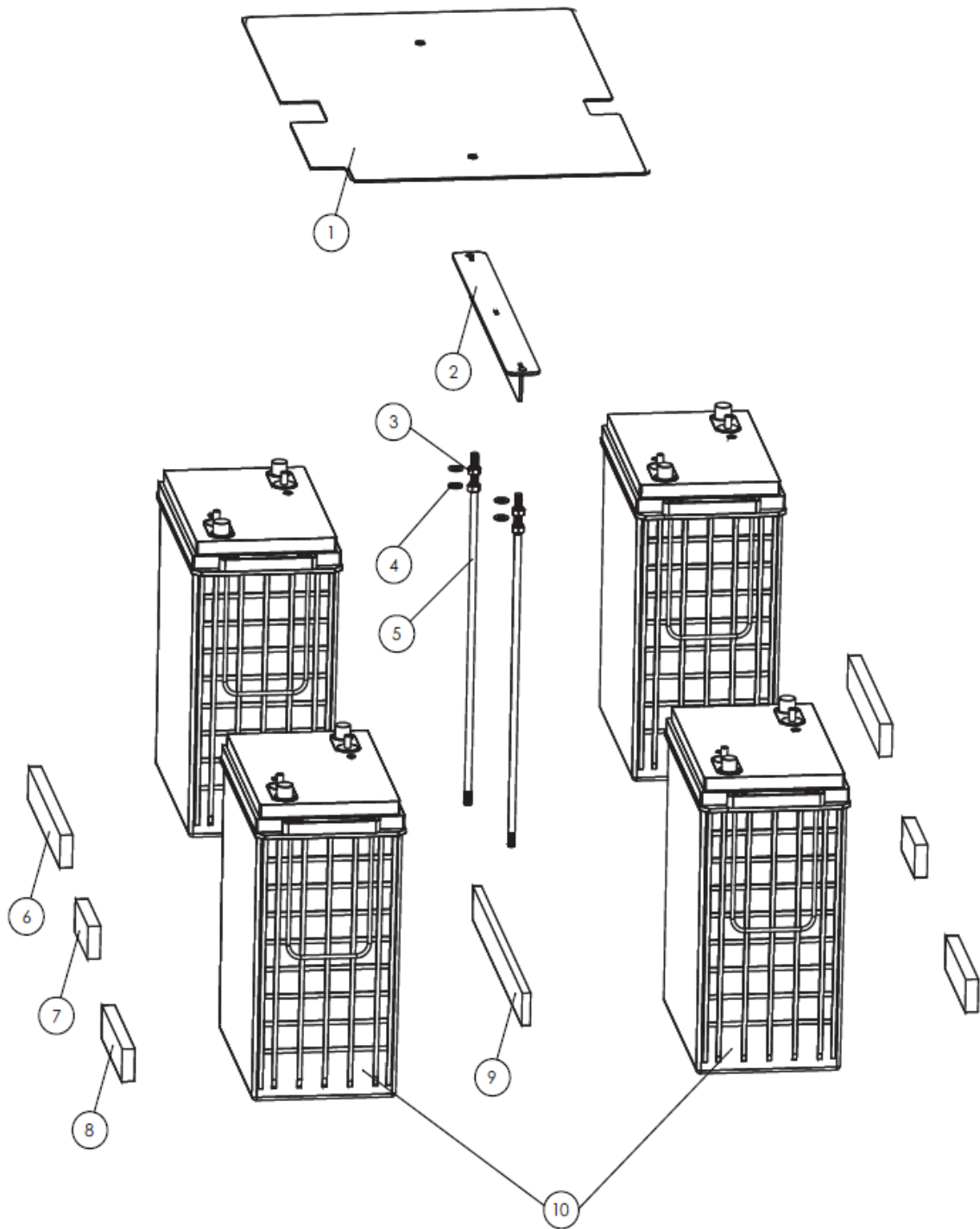


---

<u>NO.</u>	<u>PART NO.</u>	<u>PART NAME</u>	<u>QTY.</u>	<u>REMARKS</u>
1	70-9020	BATTERY CHARGER	1	
2	7-6057	SCREW M6 X 20	6	
3	7-6060	SCREW M6 X 14	2	
4	109-99945	WARNING DEVICE MOUNT	1	
5	70-9040	HORN	1	
6	4-6001	WASHER M6	4	
7	8-6007	NUT NYLOC M6	4	
8	70-9030	REVERSE BUZZER	1	
9		AUZ POWER LEAD AUZ	1	



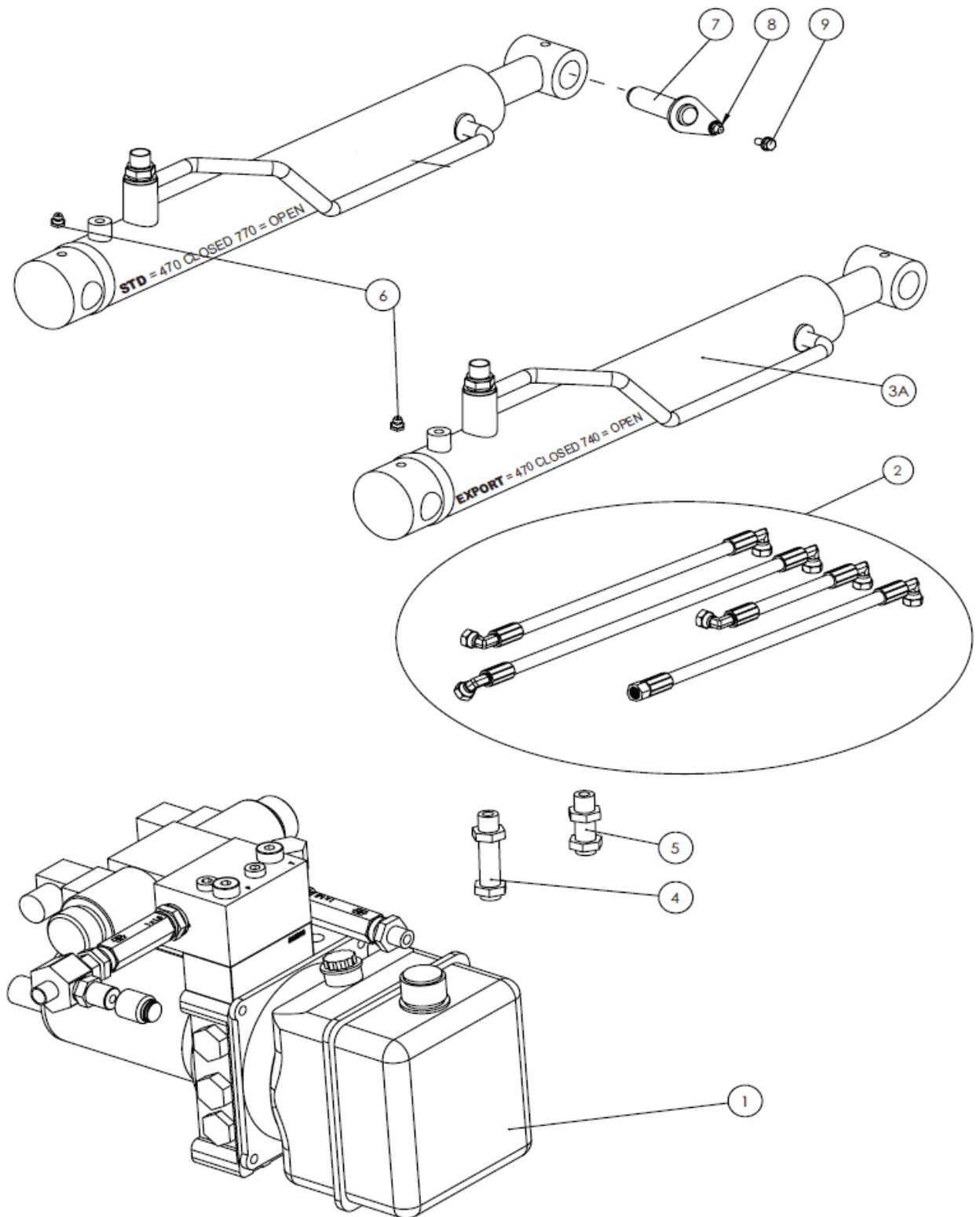
# BATTERY ASSY.



## BATTERY ASSY.

<u>NO.</u>	<u>PART NO.</u>	<u>PART NAME</u>	<u>QTY.</u>	<u>REMARKS</u>
1	109-99943	BATTERY COVER	4	
2	109-04400	BATTERY CLAMP	1	
3	4-8006	WASHER M8	4	
4	8-8008	NUT NYLOC M8	4	
5	109-99942	CLAMP ROD	2	
6	1-1901	BATTERY PACKER	2	
7	1-1900	BATTERY PACKER	2	
8	1-1899	BATTERY PACKER	2	
9	1-1902	BATTERY PACKER	1	
10	70-4100	BATTERY	4	

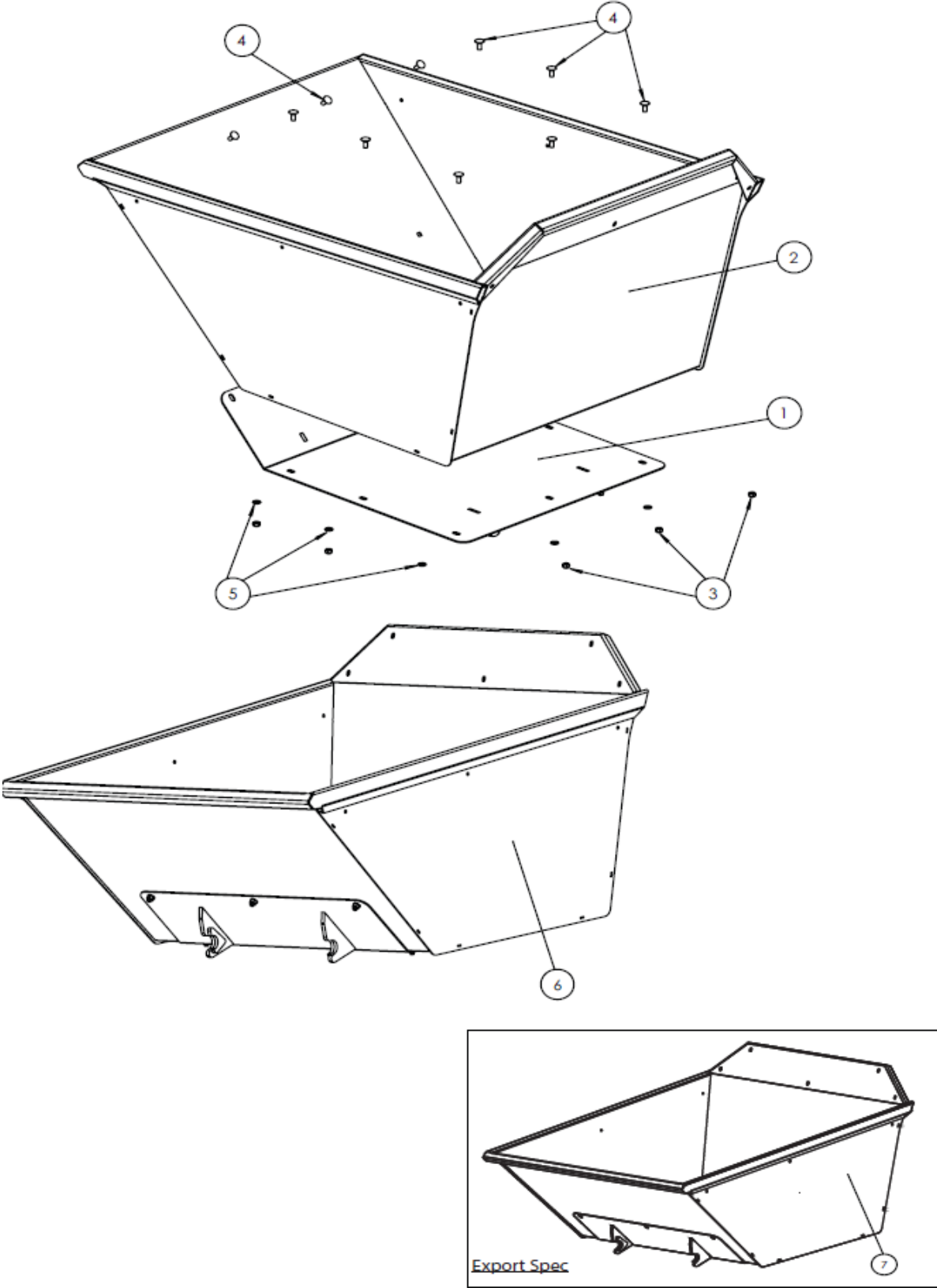
# HYDRAULIC SYSTEM ASSY.



## HYDRAULIC SYSTEM ASSY.

<u>NO.</u>	<u>PART NO.</u>	<u>PART NAME</u>	<u>QTY.</u>	<u>REMARKS</u>
1	6-4020	HYDRAULIC PUMP 24V	1	
2	109-04100	PIPE KIT	1	
3	6-4004	HYDRAULIC RAM	1	
4	6-4031	1/4 B M/M EXT BULKHEAD + NUT	1	
5	6-4014	1/4 X 1/4 M/M BULKHEAD FITTING	1	
6	53-0202	GREASE NIPPLE M8	2	
7	109-05700	PIVOT PIN	2	
8	7-6026	SCREW SET M6 X 20	2	
9	8-6031	NUT FLANGE M6	2	

# STANDARD SKIP



## STANDARD SKIP

<u>NO.</u>	<u>PART NO.</u>	<u>PART NAME</u>	<u>QTY.</u>	<u>REMARKS</u>
1	109-00350GG	TIPPING BASE GOOSE GREY	1	
1	109-00350DG	TIPPING BASE DARK GREY	1	
1	109-00350B	TIPPING BASE BLACK	1	
2	100-06200R	SKIP 800KG ORANGE	1	
2	100-06200SR	SKIP 800KG RED	1	
2	100-06200Y	SKIP 800KG YELLOW	1	
3	8-8000	NUT NYLOC M8	10	
4	7-8102	BOLT COACH M8 X 20	10	
5	4-8006	WASHER M8	10	
6	100-06400R	SKIP ASSY 800KG ORANGE	1	
7	100-06900OG	SKIP ASSY EXPORT 800KG ORANGE	1	



## Flextool

1956 Dandenong Road, Clayton VIC 3168, Australia

Phone: 1300 353 986

[flextool.com.au](http://flextool.com.au)

ABN 80 069 961 968

This manual summarises our best knowledge of the product based on the information available at the time of publication. You should read this manual carefully and consider the information in the context of how the product will be used. Our responsibility for products sold is subject to our standard terms and conditions of sale.

### DISCLAIMER:

Any advice, recommendation, information, assistance or service provided by us in this manual is given in good faith and is believed by us to be appropriate and reliable. However, any advice, recommendation, information, assistance or service provided by us is provided without liability or responsibility PROVIDED THAT the foregoing shall not exclude, limit, restrict or modify the right entitlements and remedies conferred upon any person or the liabilities imposed upon us by any condition or warranty implied by Commonwealth, State or Territory Act or ordinance void or prohibiting such exclusion limitation or modification. The product can be expected to perform as indicated in this manual so long as operation and operational procedures of the individual products are followed as recommended in this manual.

Design and technical specifications may be subject to changes.

© This publication is copyright. All rights are reserved. Flextool is a registered trade mark and TuffTruk is a trade mark of Parchem Construction Supplies Pty Ltd.