

GENERAL PURPOSE ENGINE

GX35

PARTS CATALOGUE

3

FOREWORD INDEX

1

ENGINE GROUP

2

PART NUMBER INDEX

3

PART NAME INDEX

4

Instruction for use of parts catalogue

- **This parts catalogue was prepared based on the latest information available as of January 10, 2005.**
- See the parts catalogue news for any revision that is made after January 10, 2005.
- **Always specify the part number when ordering a part.**
 - Check the model, type, serial numbers, color, maker, and the size as needed before ordering a part.
 - Note that the illustrations (part drawings) can differ from the actual parts in shape. They are given just to help you to refer to the parts.
- **When modifications or additions to this parts catalogue are made, a revised edition will be issued at an appropriate time, with successively progressing revision numbers on the cover. We recommend obtaining such revisions in order to keep your parts catalogue up-to-date at all times. To check whether a parts catalogue revision has been issued, please contact your Honda distributor.**

Initial version issue date **November 20, 2003**
Honda Motor Co., Ltd.

CONTENTS

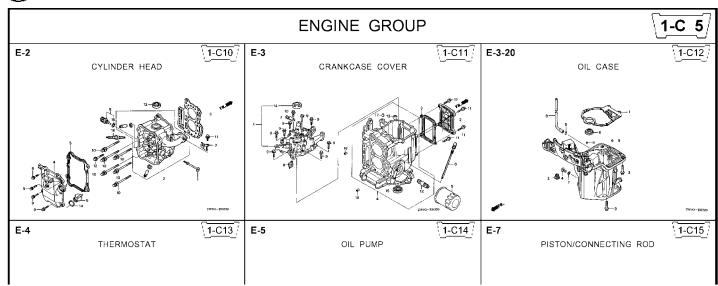
	Page	Address No.	
● How to refer to the part information	2	B 2	1
● Part catalogue structure	3	B 3	
● When the parts were revised	4	B 4	
● Abbreviations used in the parts catalogue.....	4	B 4	
● How to check the part block and serial numbers.....	5	B 5	
● Models, parts catalogue codes and applicable serial numbers	6	B 6	
● Features of each type.....	8	B 8	
● Fuel hose, general purpose hoses and vinyl hose.....	9	B 9	
● Illustrated index	10	B10	
● ENGINE GROUP.....	12	C 1	2
● PART NO. INDEX.....	28	D 1	3
● PART NAME INDEX.....	29	E 1	4



How to refer to the part information

1

A Reference with "Illustrated index"



B Reference with "Part number index"

PART NO. INDEX

Part Number	Address	Page	Ref.	Part Number	Address	Page	Ref.
06000				15212-ZW9-000	1-C14	3C	
06316-ZW9-000	1-G9	88	1	15220-ZW9-003	1-C14	3C	
11000				15332-ZW9-000	1-E8	5E	
11300-ZW9-405	1-C11	27	1	15332-ZW9-A30	1-E11	5E	
11300-ZW9-406	1-C11	27	1	15400-PFB-004	1-C11	27	
11340-ZW9-000	1-C11	27	2	15422-ZW9-000	1-C14	3C	
11342-ZW9-000	1-C11	27	3	15473-881-000	1-C14	3C	
11381-ZW9-003	1-C12	28	1	15474-ZW9-000	1-C14	3C	
				15611-921-000	1-C10	2E	
				15655-ZW9-000	1-C11	27	
				16000			
12000				16010-ZV4-005	1-D4	3E	
12000-ZW9-405ZA	1-C11	27	4	16011-ZV4-005	1-D4	3E	
12155-ZV4-A00	1-C13	29	1	16013-ZW9-003	1-D4	3E	
12166-ZW9-000	1-C10	26	1	16016-ZW9-003	1-D4	3E	
12209-GB4-681	1-C16	32	1	16016-ZW9-721	1-D4	3E	
12210-ZW9-405ZA	1-C10	26	2	16023-ZW9-003	1-D4	3E	
12216-ZE2-300	1-E8	5E	1	16024-ZV4-650	1-D4	3E	
	1-E11	5E	1	16028-ZV4-650	1-D4	3E	

C Reference with "Part name index"

PART NAME INDEX

Part name	Address	Page	Ref.
[A]			
ABSORBER , FUEL	1-E15	62	5
ARMATURE COMP.	1-D11	43	7
ARM COMP. , LINK JOINT	1-G6	85	18
ARM COMP. , SHIFT LINK	1-G6	85	14
ARM COMP. , TILT	1-F15	79	20
ARM , FUEL PUMP ROCKER	1-C16	32	4
ARM , REVERSE LOCK	1-F15	79	18
ARM , SHIFT LINK	1-F11	74	7
ARM , STOPPER	1-D1	33	12
ARM , THROTTLE REMOTE	1-F11	74	6
ARM , VALVE ROCKER	1-C16	32	3
[B]			
BAG , TOOL , 160MM	1-G5	84	10
BAND	1-G6	86	37
BAND B1 , WIRE	1-F6	69	1
BAND , CORD	1-F3	67	18
BAND , TUBE CLIP , 11MM	1-E15	63	20
BAND , TUBE CLIP , 12.5MM	1-E15	63	19

Address No. 1-C10

Block No. E-2

Ref No.

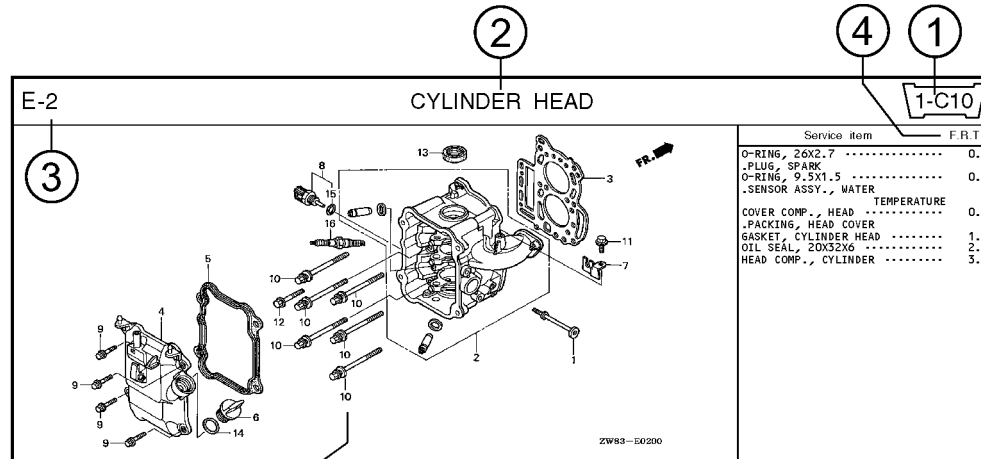
Service item F.R.T.

O-RING, 26X2.7	0.1
.PLUG, SPARK	0.2
O-RING, 9.5X1.5	0.2
.SENSOR ASSY., WATER	0.3
COVER COMP., HEAD	0.3
.PACKING, HEAD COVER	1.8
GASKET, CYLINDER HEAD	2.4
OIL SEAL, 20X32X6	2.4
HEAD COMP., CYLINDER	3.1

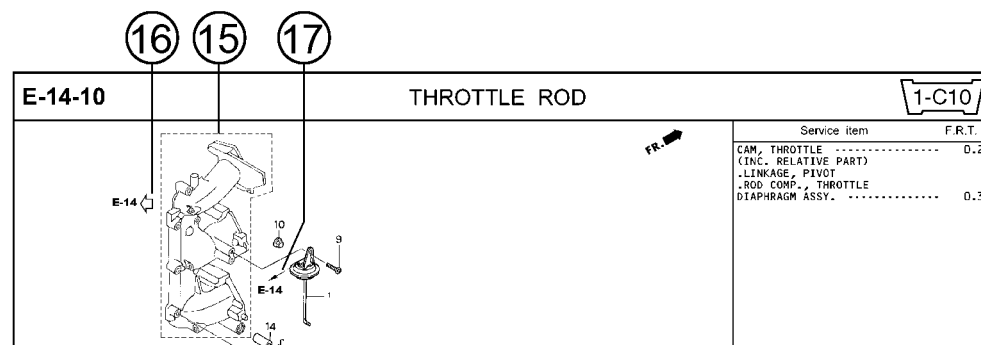
Ref. No.	Part No.	Description	Reqd. QTY						Serial No.	Parts catalogue code
			9901	9901	1001	1001	1001	1001		
1	12166-ZW9-000	STOPPER, ENGINE SIDE	2	2	2	2	2			
2	12210-ZW9-000ZA	HEAD COMP., CYLINDER	1	1	1	1	1			
3	12251-ZW9-003	GASKET, CYLINDER HEAD	1	1	1	1	1			
4	12310-ZW9-000	COVER COMP., HEAD	1	1	1	1	1			
5	12312-ZW9-000	PACKING, HEAD COVER	1	1	1	1	1			
6	15611-921-000	CAP, OIL (NO GAUGE)	1	1	1	1	1			
7	16617-ZW9-000	HOLDER, CABLE	1	1	1	1	1	SC,SG		
	16617-ZW9-010		1	1	1	1	1	1001800 LHC,LHD		
			1	1	1	1	1	1001801	LHC,LHD	
8	35673-ZW5-003	SENSOR ASSY., WATER	1	1	1	1	1			
9	90003-ZW9-000	BOLT, FLANGE, 6X22	4	4	4	4	4			
10	90007-ZW9-003	BOLT, FLANGE, 8X83	6	6	6	6	6			
11	90011-ZW9-000	BOLT, FLANGE, 6X14(CT200)	1	1	1	1	1			
12	90009-ZW9-000	BOLT, FLANGE, 8X40	2	2	2	2	2			
13	91305-K49-003	OIL SEAL, 20X32X6	1	1	1	1	1			
14	91301-805-000	O-RING, 26X2.7	1	1	1	1	1			
15	91307-PK2-005	O-RING, 9.5X1.5(HONDA KIKAKI)	1	1	1	1	1			
16	98059-55916	PLUG, SPARK (CR5EH-9)	2	2	2	2	2			
	98059-55926	PLUG, SPARK (U16FER9)	2	2	2	2	2			

Page No. 2000.09.20 E

Part catalogue structure



Ref. No.	Part No.	Description	Reqd. QTY						Serial No.	Parts catalogue code
			BF 93D1	BFP 93D1	BF 10D1	BFP 10D1	BF 10B1	BFP 10B1		
1	12166-zw9-000	STOPPER, ENGINE SIDE	2	2	2	2	2	2		
2	12210-zw9-000ZA	HEAD COMP., CYLINDER *NH8*	1	1	1	1	1	1		
3	12251-zw9-003	GASKET, CYLINDER HEAD	1	1	1	1	1	1		
4	12310-zw9-000	COVER COMP., HEAD	1	1	1	1	1	1		
5	12312-zw9-000	PACKING, HEAD COVER	1	1	1	1	1	1		
6	15611-921-000	CAP, OIL (NO GAUGE)	1	1	1	1	1	1		
7	16617-zw9-000 16617-zw9-010	HOLDER, CABLE	1	1	1	1	1	1	SC,SG 1001800 LHC,LHD	



① Address number

- Address No. is provided (in place of the page No.) to help you refer to the part with the part No. or part name.

② Block title ③ Block number

④ Service item/Flat rate time

⑤ Reference number

- Title number marked with the parenthesis or parentheses indicates that it continues from the previous page.

⑥ Part number ⑦ Honda color code

⑧ Description

⑨ Assemblies

- Sections framed with broken lines in the exploded view drawings are available as complete assemblies. (Their individual parts can also be obtained.)

⑩ Color description

⑪ Note

- Notes are shown with the parentheses in the part name column.

⑫ Required quantity

- Required QTY shown in the parenthesis or parentheses indicates the optional part.
- Required QTY marked with "N" Indicates the optional part that should be selected as needed.
- Required QTY indicates the number of the part used in the block.

⑬ Serial number

⑭ Type

- When the type column is blank, it indicates that the part is applicable to all types.
- As the type of the actual unit may differ from the "parts catalogue, type" please refer to "Models, types and applicable serial numbers" for confirmation.

⑮

- Parts enclosed within a dotted line are covered in a different block.

⑯

- A hollow arrow indicates the block No. for the parts enclosed within a dotted line .

⑰

- A solid arrow indicates the block No. the part in question is connected to.

When the parts were revised

Abbreviations used in the parts catalogue

1



Be sure to check the serial number!!



Ref. No.	Part No.	Description	Reqd. QTY						Serial No.
			BF 99D1	BFP 99D1	BF 10D1	BFP 10D1	BF 10B1	BFP 10B1	
1	12166-ZW9-000	STOPPER, ENGINE SIDE	2	2	2	2	2	2	
2	12210-ZW9-000ZA	HEAD COMP., CYLINDER *NH8*..... DARK GRAY	1	1	1	1	1	1	
3	12251-ZW9-003	GASKET, CYLINDER HEAD	1	1	1	1	1	1	
4	12310-ZW9-000	COVER COMP., HEAD	1	1	1	1	1	1	
5	12312-ZW9-000	PACKING, HEAD COVER	1	1	1	1	1	1	
6	15611-921-000	CAP, OIL (NO GAUGE)	1	1	1	1	1	1	
7	16617-ZW9-000	HOLDER, CABLE (###).....	1	1	1	1	1	1	SC, SG LHC, LHD 1001800
	16617-ZW9-010	1	1	1	1	1	1	

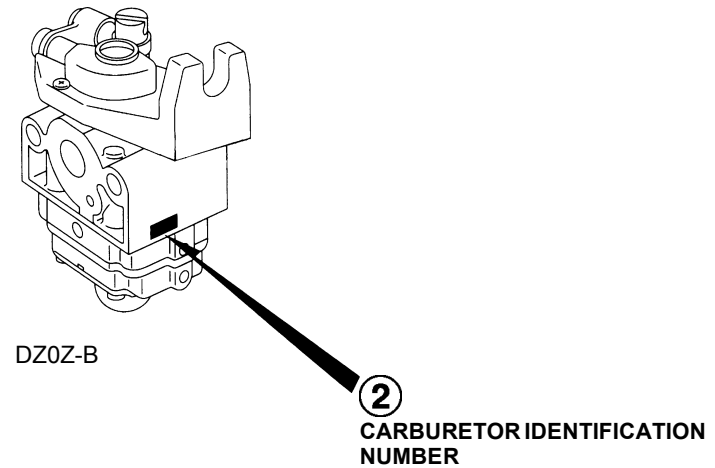
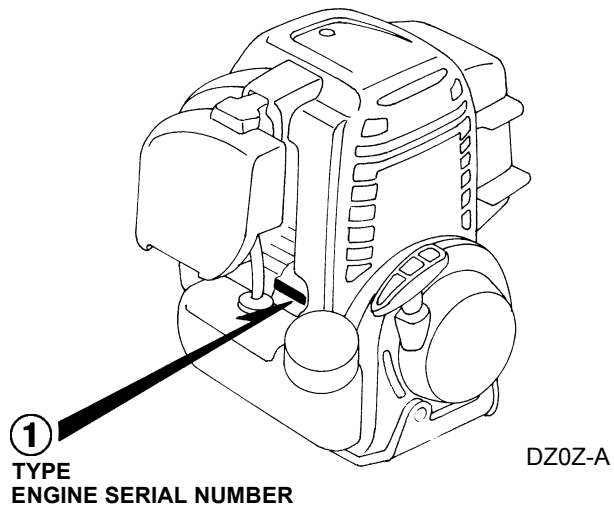
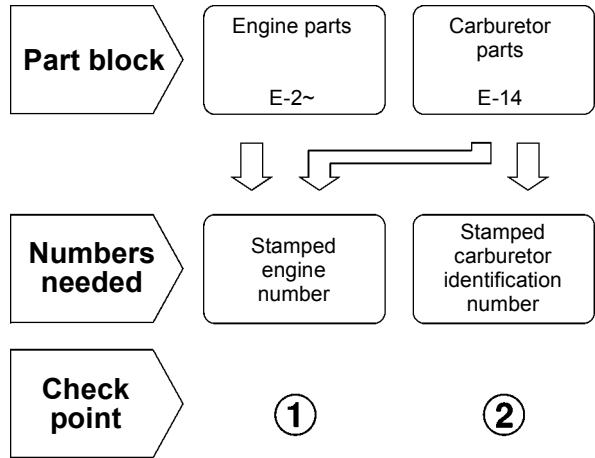
The number has been used from the initial model without revision. When shown at the left side, it is applicable to the models of No.1001801 and the subsequent numbers. When shown at the right side, it is applicable to the models up to No.1001800.

• The parts listed with "###" at the end of the parts name have limited supply period (parts not for sale).

• The following abbreviations are used in the parts name column.

- A Ampere
- A.C. Alternating current
- ASSY. Assembly
- AT. Automatic transmission
- C.D.I. Capacitive discharge ignition
- COMP. ... Complete
- D.C. Direct current
- EX. Exhaust
- G.F.C.I ... Ground fault circuit interruptor
- HEX. Hexagonal
- H.S.T. Hydrostatic transmission
- FR.Front
- IN.Inlet
- L (100L) .Link (100 Links)
- L.Left
- MMMillimeter
- MT.Manual Transmission
- P.T.O.Power take off
- R.Right
- RR.Rear
- STD.Standard
- T (22T) ...Tooth (22 Teeth)
- V Volt
- WWatt

How to check the part block and serial numbers



Models, parts catalogue codes and applicable serial numbers

- Models, parts catalogue codes and applicable serial Nos. given in this parts catalogue can be identified as follows.

Model	Type	Parts catalogue type	Applicable engine serial No.	Applicable carburetor identification No.
GX35	SAT	SAT	GCACM-1000001~1099999	WYB 16A
		SAT/A	GCACM-1100001~	WYB 16A/B
	SAU	SAU	GCACM-1000001~1099999	WYB 15A
		SAU/A	GCACM-1100001~	
	SAUT	SAUT	GCACM-1000001~1099999	
		SAUT/A	GCACM-1100001~	
	SA2	SA2	GCACM-1000001~1099999	WYB 16A
		SA2/A	GCACM-1100001~	WYB 16A/B
	SCT	SCT	GCACM-1000001~1099999	WYB 16A
		SCT/A	GCACM-1100001~	WYB 16A/B
	SC2	SC2	GCACM-1000001~1099999	WYB 16A
		SC2/A	GCACM-1100001~	WYB 16A/B
	SD	SD	GCACM-1000001~1099999	WYB 14A
		SD/A	GCACM-1100001~	
	SDS	SDS		

Model	Type	Parts catalogue type	Applicable engine serial No.	Applicable carburetor identification No.
GX35	SDT	SDT	GCACM-1000001~1099999	WYB 14A
		SDT/A	GCACM-1100001~	
	SE	SE	GCACM-1000001~1099999	WYB 16A
		SE/A	GCACM-1100001~	WYB 16A/B
	SEGT	SEGT		
	SET	SET	GCACM-1000001~1099999	WYB 16A
		SET/A	GCACM-1100001~	WYB 16A/B
	SJ	SJ	GCACM-1000001~1099999	WYB 14A
		SJ/A	GCACM-1100001~	
	SJS	SJS		
	SJT	SJT	GCACM-1000001~1099999	WYB 14A
		SJT/A	GCACM-1100001~	
	SLT	SLT		WYB 16B
	SUT	SUT	GCACM-1000001~1099999	WYB 15A
SUT/A		GCACM-1100001~		

* Of carburetor identification numbers, only the portions underlined in the example below are used for registration.

WYB 16A KC ナ

Features of each type

- See the following table for the features of each type.

Specifications	Model	GX35								
	Type	SAT	SAU	SAUT	SA2	SCT	SC2	SD	SDS	SDT
Spark arrester		●	●	●	●	●	●			
Tank guard		●		●		●				●

Specifications	Model	GX35							
	Type	SE	SEGT	SET	SJ	SJS	SJT	SLT	SUT
Spark arrester								●	●
Tank guard			●	●			●	●	●

1

Fuel hose, general purpose hoses and vinyl hose

- The standard part fuel hose, general purpose hose and vinyl hose may be substituted by the coiled bulk part.
- When ordering the standard part fuel hose, general purpose hose and vinyl hose use the bulk part number written in the parts catalog in brackets () underneath the part name.
- When exchanging the hose, cut and use at the specified length as mentioned in the part name.
(For the method of cutting the bulk part, and method of filling out orders etc., please refer to the instructions issued with the bulk part.)

Bulk part number of fuel hose, general purpose hose and vinyl hose.

Example: 9 5 0 0 1 - 7 5 0 0 1 - 5 0 M

Bulk part number:
Refers to the bulk part.

Marking code (fuel hose and general purpose hose)

Change code (Vinyl hose)

Indicates number mark or change sequence, however, the code for the bulk part must be strictly 0 (zero).

Types of code:

- | | | | | | |
|-------------|--|----------------|--|--------------|---|
| • Fuel hose | 2: Red outside braid
(3 mm inside dia. only) | • General hose | 1: Ash gray
2: Ash gray
3: Black
5: Black | • Vinyl hose | 1: Clear
2: Black
3: Light red
6: Light red
7: Pale black |
| | 5: Black inside braid | | | | |
| | 3: Red (3 mm inside dia. only) | | | | |
| | 4: Ash gray with red stripe
(3 mm inside dia. only) | | | | |
| | 6: Black | | | | |

Lengths:

- 001: 1 m (standard)
003: 3 m
008: 8 m } Application or specification of some parts is not settled.

I.D code: (fuel hose and general purpose hose)

- | | | | | |
|------------|--------------------|--------------------|-----------------------------|-----------------------------|
| 30: 3.0 mm | 50: 5.0 mm | 70: 7.0 mm | 11: 11 mm | 12: 12 (outside dia. 17) mm |
| 35: 3.5 mm | 55: 5.3 mm, 5.5 mm | 75: 7.3 mm, 7.5 mm | 91: 12 (outside dia. 15) mm | 14: 14 mm |
| 45: 4.5 mm | 65: 6.5 mm | 80: 8.0 mm | 92: 12 (outside dia. 16) mm | 17: 17 mm |

ID./OD. code: (vinyl hose)

- | | | | | |
|-------------------------|--------------------------|---------------------------|---------------------------|---------------------------|
| 01: ID. 2.9, OD. 6.8 mm | 12: ID. 5.0, OD. 7.0 mm | 21: ID. 8.0, OD. 9.0 mm | 37: ID. 11.0, OD. 15.0 mm | 50: ID. 16.0, OD. 19.0 mm |
| 03: ID. 3.0, OD. 6.0 mm | 10: ID. 5.0, OD. 8.0 mm | 23: ID. 8.0, OD. 12.0 mm | 38: ID. 12.0, OD. 13.0 mm | 55: ID. 17.5, OD. 20.5 mm |
| 05: ID. 3.5, OD. 6.5 mm | 11: ID. 5.0, OD. 9.0 mm | 25: ID. 9.0, OD. 11.0 mm | 39: ID. 12.0, OD. 14.0 mm | 60: ID. 22.0, OD. 27.0 mm |
| 07: ID. 4.0, OD. 7.0 mm | 14: ID. 6.0, OD. 9.0 mm | 27: ID. 9.0, OD. 13.0 mm | 40: ID. 12.0, OD. 16.0 mm | |
| 08: ID. 4.5, OD. 6.5 mm | 17: ID. 7.0, OD. 9.0 mm | 33: ID. 10.0, OD. 14.0 mm | 43: ID. 13.0, OD. 15.0 mm | |
| 09: ID. 4.5, OD. 8.0 mm | 19: ID. 7.0, OD. 11.0 mm | 36: ID. 11.0, OD. 13.0 mm | 45: ID. 14.0, OD. 18.0 mm | |

Hose type:

- 1: Fuel hose
3: Vinyl hose
5: General hose

⊙ **CAUTION: It is DANGEROUS to confuse the fuel hose with the general purpose hose or vinyl hose.**

Never use a general purpose hose or vinyl hose in place of a fuel hose or vice versa. Always use the correct bulk part in the parts catalogue, according to the service manual or the instructions issued with the bulk part.

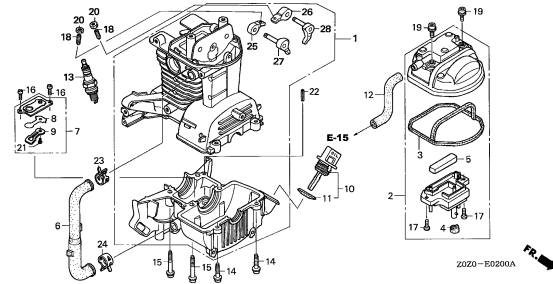
ENGINE GROUP

B10

E-2

CRANKCASE SET

C 1



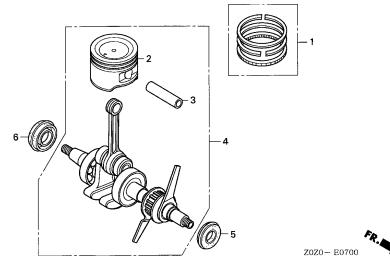
ZOZO-E0200A



E-7

CRANKSHAFT/PISTON

C 3



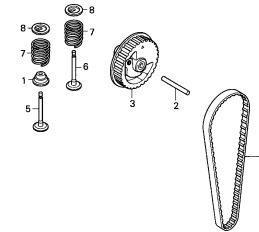
ZOZO-E0700



E-10

CAM PULLEY

C 4



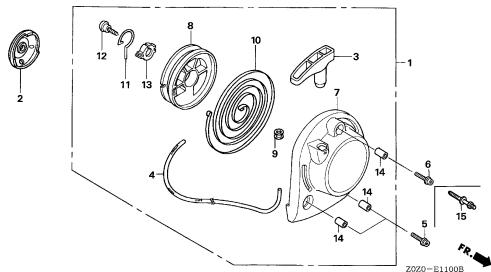
ZOZO-E1000



E-11

RECOIL STARTER

C 5



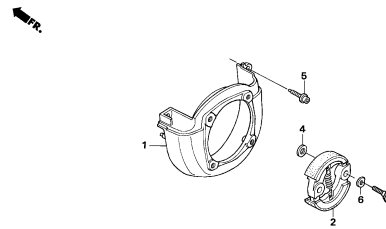
ZOZO-E1100B



E-12

FAN COVER/CLUTCH

C 6



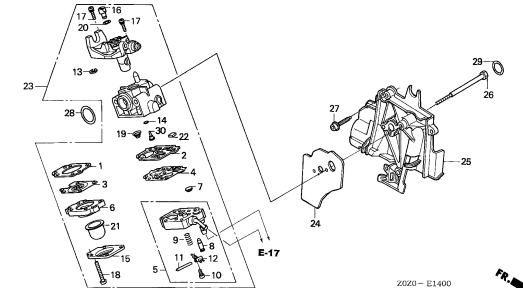
ZOZO-E1200A



E-14

CARBURETOR

C 7



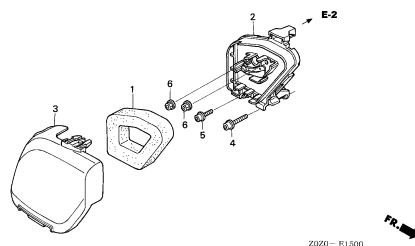
ZOZO-E1400



E-15

AIR CLEANER

C 9



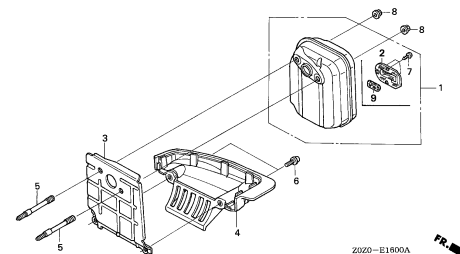
ZOZO-E1500



E-16

MUFFLER

C10



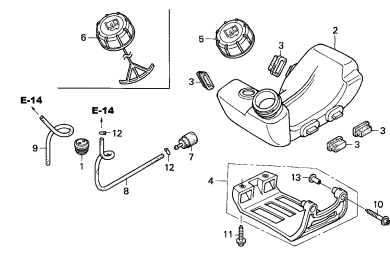
ZOZO-E1600A



E-17

FUEL TANK

C11



ZOZO-E1700



2

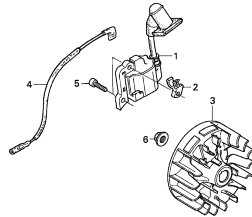
ENGINE GROUP

B11

E-19

FLYWHEEL

C13

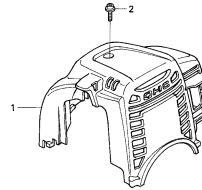


Z020 - E1900 

E-27

TOP COVER

C14

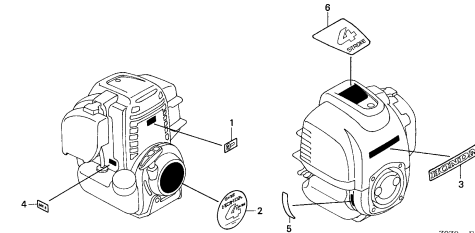


Z020 - E2700 

E-28

LABEL

C15

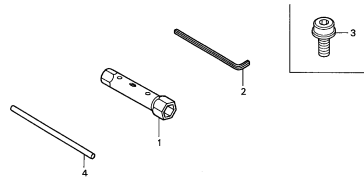


Z020 - E2800

E-29

TOOL

C16



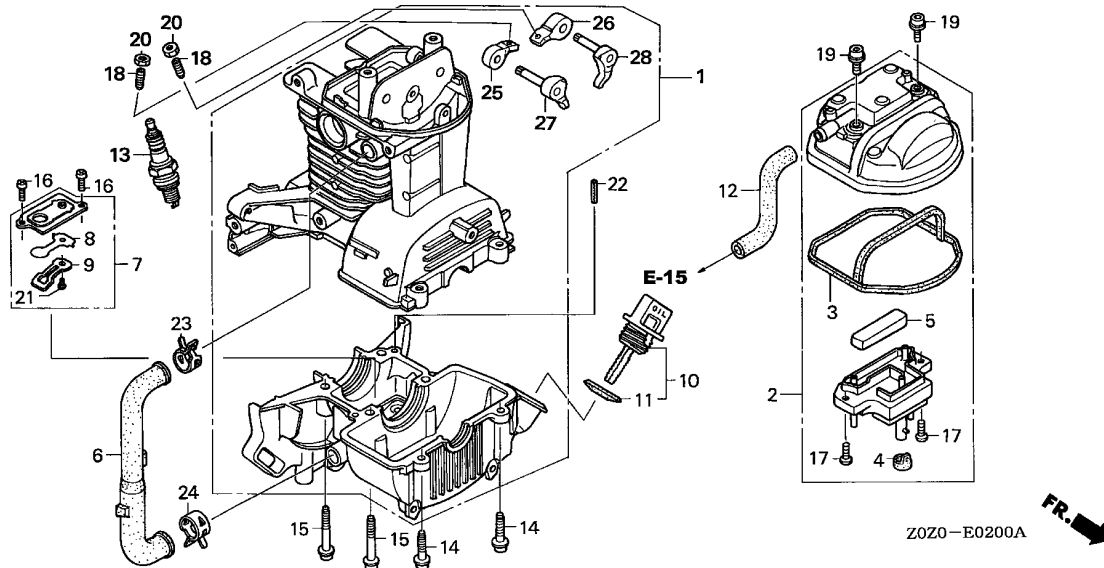
Z020 - E2900

2

E-2

CRANKCASE SET

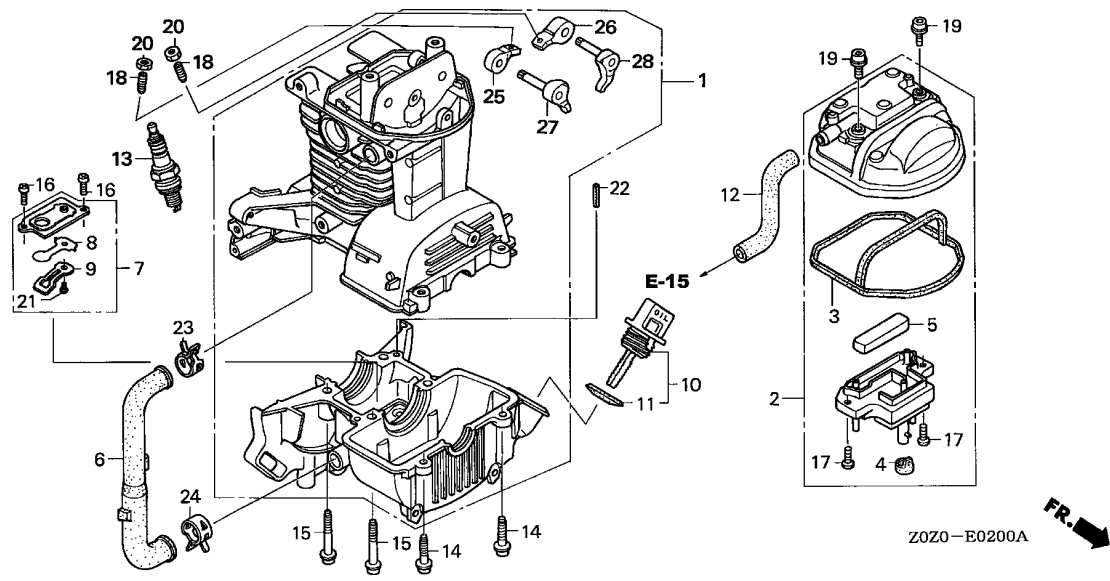
C 1



Service item

F.R.T.

Ref. No.	Part No.	Description	Reqd. QTY GX35	Serial No.	Parts catalogue code
1	10100-Z0Z-405	CRANKCASE SET	1		
2	12310-Z0Z-000	COVER, CYLINDER HEAD	1		
3	12312-Z0Z-300	SEAL, HEAD COVER	1		
4	12314-Z0H-300	GROMMET, HEAD COVER	1		
5	12367-Z0H-000	FILTER, BREATHER	1		
6	15422-Z0Z-000	TUBE, OIL	1		
7	15510-Z0H-000	PLATE ASSY., OIL OUTLET VALVE	1		
8	15571-ZM3-003	VALVE, OIL OUTLET	1		
9	15572-Z0H-000	PLATE, STOPPER	1		
10	15600-ZM3-003	CAP ASSY., OIL FILLER	1		
11	15625-ZE1-003	PACKING, OIL FILLER CAP	1		
12	15721-Z0Z-000	TUBE, BREATHER	1		
13	31914-Z0H-003	PLUG, SPARK (CMR4H) (NGK)	(1)	-----	SAT,SAT/A,SAU,SAU/A,SAUT,SAUT/A,SA2,SA2/A,SCT,SCT/A,SC2,SC2/A,SD,SD/A,SDS SDT,SDT/A,SE,SE/A,SEGT,SET,SET/A,SLT,SUT,SUT/A
	31914-Z0H-801	PLUG, SPARK (CM4H) (NGK)	(1)	-----	SJ,SJ/A,SJS,SJT,SJT/A
	31915-Z0H-003	PLUG, SPARK (CMR5H) (NGK)	1	-----	SAT,SAT/A,SAU,SAU/A,SAUT,SAUT/A,SA2,SA2/A,SCT,SCT/A,SC2,SC2/A,SD,SD/A,SDS SDT,SDT/A,SE,SE/A,SEGT,SET,SET/A,SLT,SUT,SUT/A
	31915-Z0H-801	PLUG, SPARK (CM5H) (NGK)	1	-----	SJ,SJ/A,SJS,SJT,SJT/A
	31916-Z0H-003	PLUG, SPARK (CMR6H) (NGK)	(1)	-----	SAT,SAT/A,SAU,SAU/A,SAUT,SAUT/A,SA2,SA2/A,SCT,SCT/A,SC2,SC2/A,SD,SD/A,SDS SDT,SDT/A,SE,SE/A,SEGT,SET,SET/A,SLT,SUT,SUT/A
	31916-Z0H-801	PLUG, SPARK (CM6H) (NGK)	(1)	-----	SJ,SJ/A,SJS,SJT,SJT/A
14	90009-Z0H-003	BOLT, SOCKET, 5X20	2		
15	90010-Z0Z-003	BOLT, SOCKET, 5X32	4		
16	90013-Z0H-004	SCREW, PAN, 4X8	2		
17	90013-Z0Z-003	SCREW, PAN, 4X8	2		
18	90017-Z0H-000	SCREW, TAPPET ADJUSTING	2		

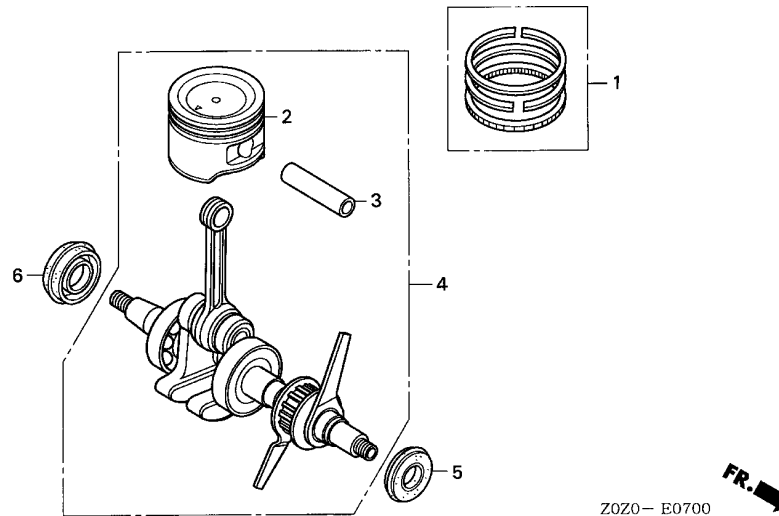


Ref. No.	Part No.	Description	Reqd. QTY GX35	Serial No.	Parts catalogue code
19	90019-ZOH-003	BOLT, SOCKET, 5X12	2		
20	90206-ZM3-000	NUT, TAPPET ADJUSTING	2		
21	93500-03005-0A	SCREW, PAN, 3X5	1		
22	94305-40102	PIN, SPRING, 4X10	1		
23	95002-41200-08	CLAMP, TUBE (D12)	1		
24	95002-41300-04	CLAMP, TUBE (D13)	1		
25	14431-ZOH-003	ARM, IN. VALVE ROCKER	1		
26	14441-ZOH-003	ARM, EX. VALVE ROCKER	1		
27	14730-ZOZ-000	LIFTER COMP., IN. VALVE	1		
28	14740-ZOZ-000	LIFTER COMP., EX. VALVE	1		



Service item

F.R.T.

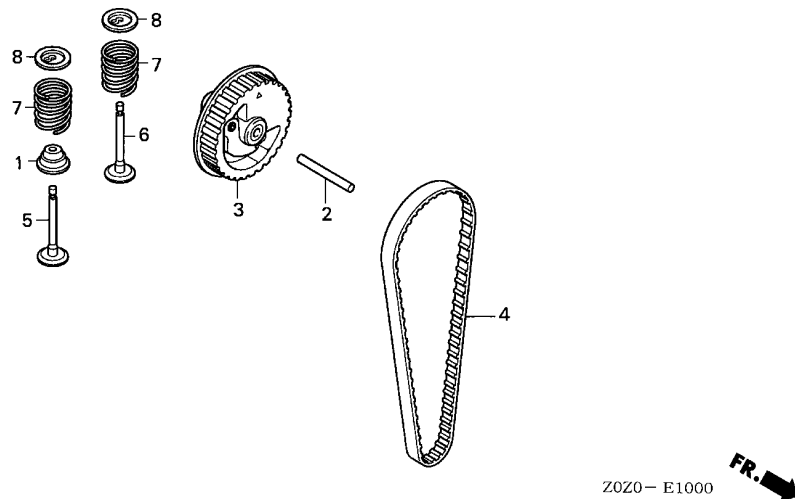


2

Ref. No.	Part No.	Description	Reqd. QTY GX35	Serial No.	Parts catalogue code
1	13010-ZM5-000	RING SET, PISTON	1		
2	13101-Z0Z-000	PISTON	1		
3	13111-ZM5-000	PIN, PISTON	1		
4	13310-Z0Z-000	CRANKSHAFT COMP.	1		
5	91212-Z0H-003	OIL SEAL, 10X20X5	1		
6	91214-ZM3-003	OIL SEAL, 15X25X6	1		

Service item

F.R.T.

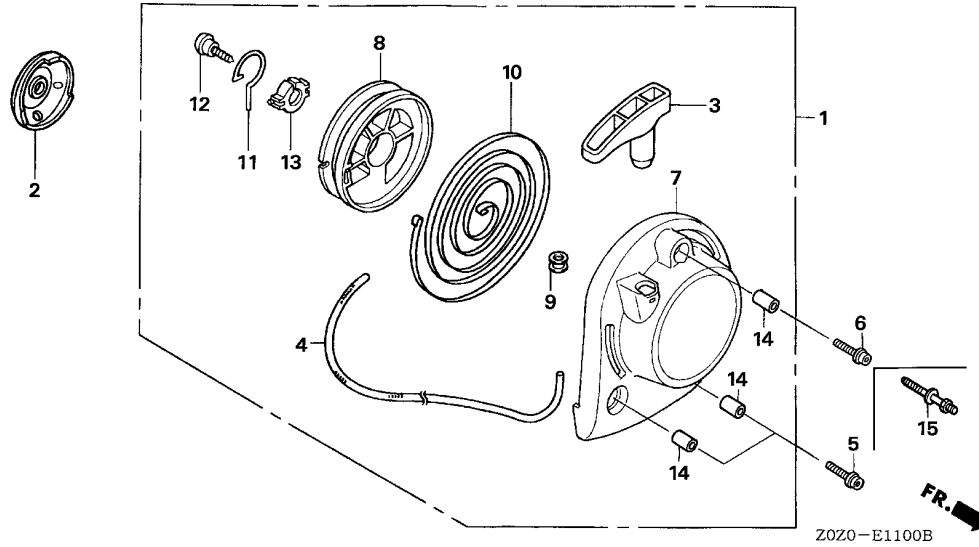


Ref. No.	Part No.	Description	Reqd. QTY GX35	Serial No.	Parts catalogue code
1	12209-Z0H-003	SEAL, VALVE STEM	1		
2	14126-Z0Z-003	ROLLER, 4X31.8	1		
3	14320-Z0Z-000	PULLEY COMP., CAMSHAFT	1		
4	14400-Z0Z-003	BELT, TIMING (76ZU7 G-300) ..	1		
5	14711-Z0Z-000	VALVE, IN.	1		
6	14721-Z0Z-000	VALVE, EX.	1		
7	14751-Z0Z-000	SPRING, VALVE	2		
8	14771-Z0H-000	RETAINER, VALVE SPRING	2		

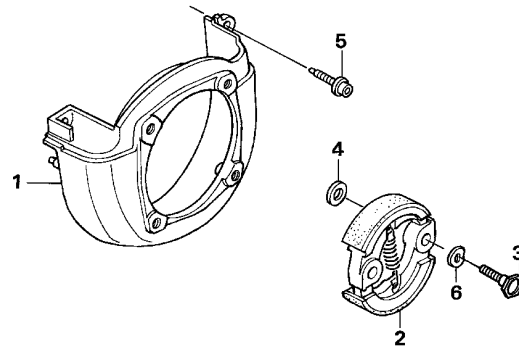


Service item

F.R.T.



Ref. No.	Part No.	Description	Reqd. QTY GX35	Serial No.	Parts catalogue code
1	28400-Z0Z-003	STARTER ASSY., RECOIL	1		
2	28451-Z0H-003	PULLEY, RECOIL STARTER	1		
3	28461-ZM3-003	KNOB, RECOIL STARTER	1		
4	28462-ZM3-003	ROPE, RECOIL STARTER	1		
5	90018-Z0H-003	BOLT, SOCKET, 5X16	2	-----	SAU,SAU/A,SA2,SA2/A,SC2,SC2/A,SD,SD/A,SE,SE/A,SEGT,SJ,SJ/A
6	90018-Z0H-003	BOLT, SOCKET, 5X16	1		
7	28414-Z0Z-000	CASE, RECOIL STARTER	1		
8	28421-ZM3-003	REEL, RECOIL STARTER	1		
9	28433-ZM3-003	GUIDE, ROPE	1		
10	28442-ZM3-003	SPRING, RECOIL STARTER	1		
11	28459-Z0H-003	ARM, SWING	1		
12	90012-ZM3-003	SCREW, SETTING	1		
13	91504-ZM3-003	COLLAR	1		
14	91506-ZM3-000	COLLAR A, HEAD COVER	3		
15	90043-Z0H-000	BOLT, STUD, B	2	-----	SDS,SJS



ZOZO-E1200A

Service item

F.R.T.

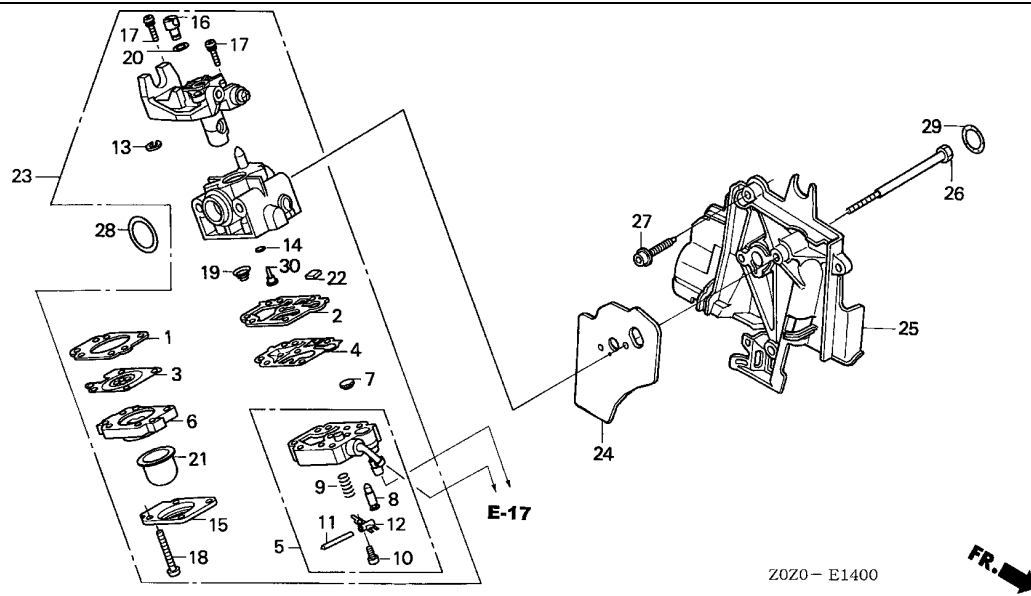
Ref. No.	Part No.	Description	Reqd. QTY GX35	Serial No.	Parts catalogue code
1	19611-ZOZ-000	COVER, FAN	1	-----	-----
2	22000-ZM5-003	CLUTCH ASSY.	1	-----	SAT,SAU,SAUT,SA2,SCT,SC2,SD,SDT,SE,SET,SJ,SJT,SUT
				1100103	SAT/A,SAU/A,SAUT/A,SA2/A,SCT/A,SC2/A,SD/A,SDT/A,SE/A,SEGT,SET/A,SJ/A
					SJT/A,SUT/A
	22000-ZOZ-003	1	-----	SDS,SJS,SLT
			1	1100104	SAT/A,SAU/A,SAUT/A,SA2/A,SCT/A,SC2/A,SD/A,SDT/A,SE/A,SEGT,SET/A,SJ/A
					SJT/A,SUT/A
3	22253-ZM5-003	BOLT, CLUTCH (8MM)	2	-----	SAT,SAU,SAUT,SA2,SCT,SC2,SD,SDT,SE,SET,SJ,SJT,SUT
			2	-----	1100103 SAT/A,SAU/A,SAUT/A,SA2/A,SCT/A,SC2/A,SD/A,SDT/A,SE/A,SEGT,SET/A,SJ/A
					SJT/A,SUT/A
	22253-ZOZ-003	2	-----	SDS,SJS,SLT
			2	1100104	SAT/A,SAU/A,SAUT/A,SA2/A,SCT/A,SC2/A,SD/A,SDT/A,SE/A,SEGT,SET/A,SJ/A
					SJT/A,SUT/A
4	22254-ZM5-003	WASHER, CLUTCH (8X17)	2	-----	SDS,SJS,SLT
5	90009-ZOH-003	BOLT, SOCKET, 5X20	3	-----	-----
6	22254-ZOZ-003	WASHER, WAVE (8MM)	2	-----	SDS,SJS,SLT
			2	1100104	SAT/A,SAU/A,SAUT/A,SA2/A,SCT/A,SC2/A,SD/A,SDT/A,SE/A,SEGT,SET/A,SJ/A
					SJT/A,SUT/A



E-14

CARBURETOR

C 7



Service item

F.R.T.

Ref. No.	Part No.	Description	Reqd. QTY GX35	Serial No.	Parts catalogue code
1	16010-ZM3-004	GASKET, METERING DIAPHRAGM	1		
2	16011-ZOH-003	GASKET, PUMP	1		
3	16013-ZOH-003	DIAPHRAGM ASSY., METERING	1		
4	16014-ZM3-004	DIAPHRAGM, PUMP	1		
5	16015-ZOH-003	BODY ASSY., PUMP	1		
6	16017-ZM3-004	BODY ASSY., AIR PURGE	1		
7	16018-ZM3-802	SCREEN, INLET	1		
8	16019-ZM3-004	VALVE, INLET NEEDLE	1		
9	16020-ZM3-004	SPRING, METERING LEVER	1		
10	16021-ZM3-004	SCREW, METERING LEVER PIN	1		
11	16022-ZM3-004	PIN, METERING LEVER	1	----- SAT,SAU,SAUT,SAZ,SCT,SC2,SD,SDT,SE,SET,SJ,SJT,SUT	
	16022-ZM3-014		1	----- SAT/A,SAU/A,SAUT/A,SAZ/A,SCT/A,SC2/A,SD/A,SDS,SDT/A,SE/A,SEGT,SET/A,SJ/A	
				SJS,SJT/A,SLT,SUT/A	
12	16023-ZM3-004	LEVER, METERING	1		
13	16024-ZOH-003	RING, RETAINING	1		
14	16025-ZM3-004	O-RING	1		
15	16026-ZM3-004	COVER, PRIMER PUMP	1		
16	16027-ZM3-004	SWIVEL	1		
17	16028-ZM3-004	SCREW, THROTTLE COLLAR	2		
18	16029-ZM3-004	SCREW, PUMP COVER	4		
19	16030-ZM3-004	SPRING, PUMP	1		
20	16031-ZM3-004	WASHER	1		
21	16032-ZM3-004	PUMP, PRIMER	1		
22	16035-ZM3-802	FILTER, FUEL INLET	1		

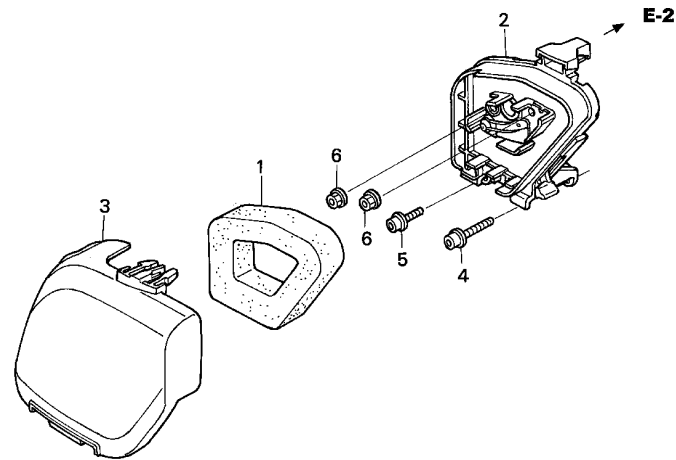
2

Ref. No.	Part No.	Description	Reqd. QTY		Serial No.	Parts catalogue code
				GX35		
23	16100-Z0Z-004	CARBURETOR ASSY. (WYB 16A)	..	1	-----	SAT,SA2,SCT,SC2,SE,SET
	16100-Z0Z-802	CARBURETOR ASSY. (WYB 15A)	..	1	1108635	SAT/A,SA2/A,SCT/A,SC2/A,SE/A,SET/A
	16100-Z0Z-812	CARBURETOR ASSY. (WYB 14A)	..	1	-----	SAU,SAUT,SUT
	16100-Z0Z-014	CARBURETOR ASSY. (WYB 16A)	..	1	1123125	SAU/A,SAUT/A,SUT/A
	16100-Z0Z-803	CARBURETOR ASSY. (WYB 15A)	..	1	-----	SD,SDT,SJ,SJT
	16100-Z0Z-813	CARBURETOR ASSY. (WYB 14A)	..	1	1108555	SD/A,SDT/A,SJ/A,SJT/A
	16100-Z0Z-024	CARBURETOR ASSY. (WYB 16B)	..	1	1136058	SEGT
				1	1108636	1136058 SAT/A,SA2/A,SCT/A,SC2/A,SE/A,SET/A
				1	1123126	SAU/A,SAUT/A,SUT/A
				1	-----	SDS,SJS
				1	1108556	SD/A,SDT/A,SJ/A,SJT/A
				1	-----	SLT
				1	1136059	SAT/A,SA2/A,SCT/A,SC2/A,SE/A,SEGT,SET/A
24	16221-Z0Z-000	PACKING, CARBURETOR	1	-----	SAT,SAU,SAUT,SA2,SCT,SC2,SD,SDT,SE,SET,SJ,SJT,SUT
25	19631-Z0Z-000	SHROUD	1	-----	1139911 SAT/A,SAU/A,SAUT/A,SA2/A,SCT/A,SC2/A,SD/A,SDS,SDT/A,SE/A,SEGT,SET/A,SJ/A
	19631-Z0Z-010	1	-----	SJS,SJT/A,SUT/A
				1	1139912	SLT
				1	-----	SAT/A,SAU/A,SAUT/A,SA2/A,SCT/A,SC2/A,SD/A,SDS,SDT/A,SE/A,SEGT,SET/A,SJ/A
				1	-----	SJS,SJT/A,SUT/A
26	90014-Z0H-003	BOLT, 5X53	2		
27	90018-Z0H-003	BOLT, SOCKET, 5X16	2		
28	91301-ZM3-000	O-RING, 14.8X2.4	1		
29	91308-Z0H-003	O-RING, 12.3X2.4	1		
30	99101-ZM5-0350	JET (#35)	(1)	-----	SAT,SAT/A,SA2,SA2/A,SCT,SCT/A,SC2,SC2/A,SD,SD/A,SDS,SDT,SDT/A,SE,SE/A,SET
	99101-Z0Z-0360	JET (#36)	(1)	-----	SET/A,SJ,SJ/A,SJS,SJT,SJT/A,SLT
	99101-Z0Z-0370	JET (#37)	1	-----	SAT,SAT/A,SA2,SA2/A,SCT,SCT/A,SC2,SC2/A,SD,SD/A,SDS,SDT,SDT/A,SE,SE/A
				(1)	-----	SEGT,SET,SET/A,SJ,SJ/A,SJS,SJT,SJT/A,SLT
				(1)	-----	SAU,SAU/A,SAUT,SAUT/A,SUT,SUT/A
	99101-Z0Z-0380	JET (#38)	1	-----	SAU,SAU/A,SAUT,SAUT/A,SUT,SUT/A



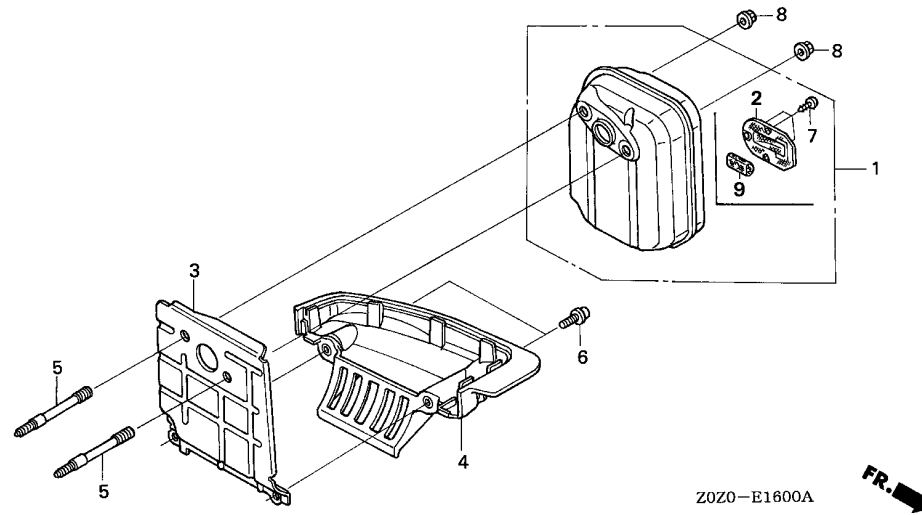
Service item

F.R.T.



Z0Z0-E1500

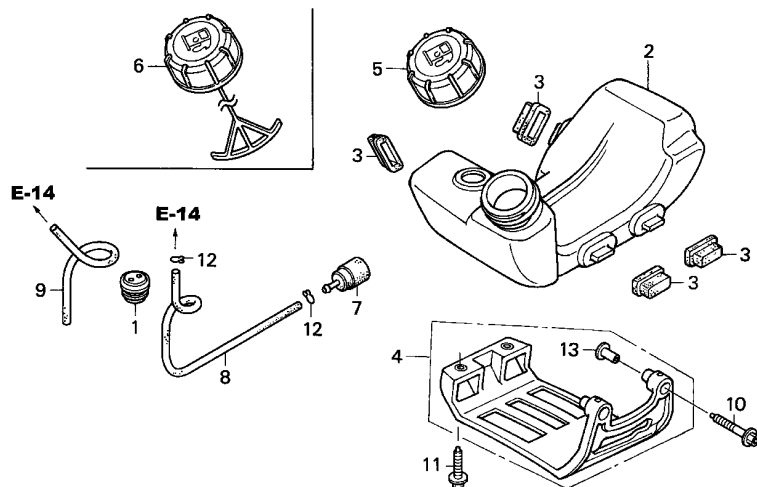
Ref. No.	Part No.	Description	Reqd. QTY GX35	Serial No.	Parts catalogue code
1	17211-Z0Z-000	ELEMENT, AIR CLEANER	1		
2	17220-Z0Z-000	CASE COMP., AIR CLEANER	1		
3	17231-Z0Z-000	COVER, AIR CLEANER	1		
4	90009-Z0Z-003	BOLT, SOCKET, 5X25	1		
5	90018-Z0H-003	BOLT, SOCKET, 5X16	1		
6	94050-05000	NUT, FLANGE, 5MM	2		



Service item	F.R.T.

Ref. No.	Part No.	Description	Reqd. QTY GX35	Serial No.	Parts catalogue code
1	18310-Z0Z-000	MUFFLER COMP.	1	-----	SD,SDT,SE,SET,SJ,SJT
	18310-Z0Z-800	MUFFLER COMP. (ARRESTER)	1	-----	1116434 SD/A,SDT/A,SE/A,SEGT,SET/A,SJ/A,SJT/A
	18310-Z0Z-010	MUFFLER COMP.	1	-----	1119663 SAT,SAU,SAUT,SA2,SCT,SC2,SUT
	18310-Z0Z-801	MUFFLER COMP. (ARRESTER)	1	-----	SAT/A,SAU/A,SAUT/A,SA2/A,SCT/A,SC2/A,SUT/A
2	18350-Z0Z-800	ARRESTER COMP., SPARK	1	-----	SDS,SJS
3	18515-Z0Z-300	GUIDE, AIR	1	1116435	SD/A,SDT/A,SE/A,SEGT,SET/A,SJ/A,SJT/A
4	18518-Z0Z-000	GUIDE COMP., UNDER AIR	1	-----	SLT
5	90001-Z0Z-003	BOLT, STUD, 2.5X45.5	2	-----	SAT/A,SAU/A,SAUT/A,SA2/A,SCT/A,SC2/A,SUT/A
6	90018-Z0H-003	BOLT, SOCKET, 5X16	2	-----	SAT,SAT/A,SAU,SAU/A,SAUT,SAUT/A,SA2,SA2/A,SCT,SCT/A,SC2,SC2/A,SLT,SUT
7	90055-ZE1-000	SCREW, TAPPING, 4X6	3	-----	SUT/A
8	90136-SM4-901	NUT, SELF-LOCK, 5MM	2	-----	SLT
9	18354-Z0Z-800	FILTER, EXHAUST	1	1119664	SAT/A,SAU/A,SAUT/A,SA2/A,SCT/A,SC2/A,SUT/A



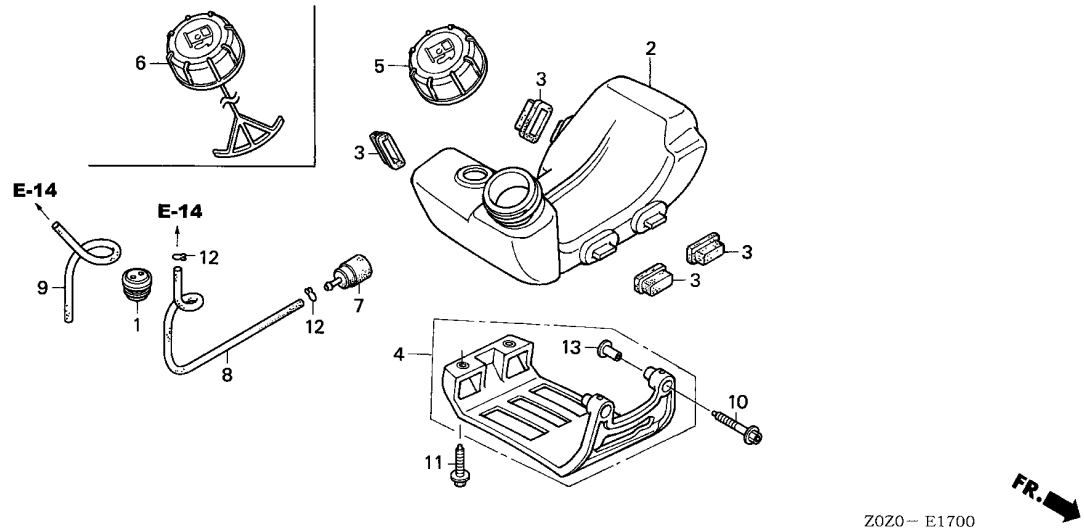


Z020- E1700

Service item

F.R.T.

Ref. No.	Part No.	Description	Reqd. QTY GX35	Serial No.	Parts catalogue code
1	17504-ZM3-003	GROMMET, FUEL TUBE	1	-----	SAT,SAU,SAUT,SA2,SCT,SC2,SD,SDT,SE,SET,SJ,SJT,SUT
2	17511-Z0Z-003	TANK, FUEL	1	----- 1128080	SAT/A,SAU/A,SAUT/A,SA2/A,SCT/A,SC2/A,SD/A,SDS,SDT/A,SE/A,SEGT,SET/A,SJ/A,SJS,SJT/A,SUT/A
	17511-Z0Z-013	1	----- 1128081	SLT SAT/A,SAU/A,SAUT/A,SA2/A,SCT/A,SC2/A,SD/A,SDS,SDT/A,SE/A,SEGT,SET/A,SJ/A,SJS,SJT/A,SUT/A
3	17533-Z0H-000	RUBBER, TANK MOUNTING	4	-----	SAT,SAT/A,SAUT,SAUT/A,SCT,SCT/A,SDT,SDT/A,SEGT,SET,SET/A,SJT,SJT/A,SLT
4	17555-Z0Z-000	GUARD, TANK	1	-----	SUT,SUT/A
5	17620-ZM3-043	CAP ASSY., FUEL TANK	1	-----	SAT,SAU,SAUT,SA2,SCT,SC2,SD,SDT,SJ,SJT,SUT
	17620-ZM3-053	1	-----	SAT/A,SAU/A,SAUT/A,SA2/A,SCT/A,SC2/A,SD/A,SDS,SDT/A,SJ/A,SJS,SJT/A,SUT/A
6	17620-ZM3-815	CAP ASSY., FUEL TANK	1	-----	SE,SET
	17620-ZM3-816	1	-----	SE/A,SEGT,SET/A,SLT
7	17672-ZM3-003	FILTER, FUEL	1	-----	SAT,SAU,SAUT,SA2,SCT,SC2,SD,SDT,SE,SET,SJ,SJT,SUT
	17672-Z0H-003	1	----- 1128080	SAT/A,SAU/A,SAUT/A,SA2/A,SCT/A,SC2/A,SD/A,SDS,SDT/A,SE/A,SEGT,SET/A,SJ/A,SJS,SJT/A,SUT/A
			1	----- 1128081	SLT SAT/A,SAU/A,SAUT/A,SA2/A,SCT/A,SC2/A,SD/A,SDS,SDT/A,SE/A,SEGT,SET/A,SJ/A,SJS,SJT/A,SUT/A
8	17701-Z0Z-000	TUBE, FUEL TANK	1	-----	
9	17702-Z0Z-000	TUBE, FUEL RETURN	1	-----	
10	90010-Z0H-003	BOLT, SOCKET, 5X30	2	-----	SAT,SAT/A,SAUT,SAUT/A,SCT,SCT/A,SDT,SDT/A,SEGT,SET,SET/A,SJT,SJT/A,SLT SUT,SUT/A
11	90018-Z0H-003	BOLT, SOCKET, 5X16	2	-----	SAT,SAT/A,SAUT,SAUT/A,SCT,SCT/A,SDT,SDT/A,SEGT,SET,SET/A,SJT,SJT/A,SLT SUT,SUT/A
12	91401-ZM3-003	CLIP, TUBE	2	-----	



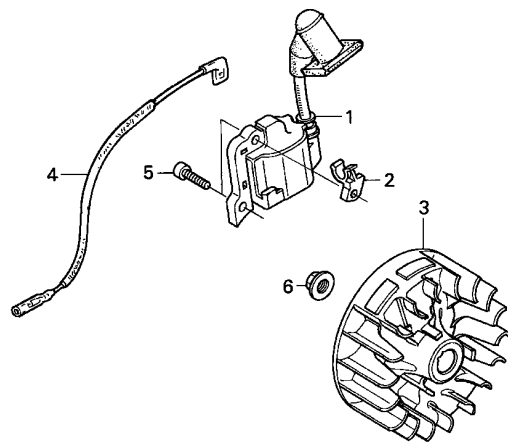
Z020 - E1700

Ref. No.	Part No.	Description	Reqd. QTY GX35	Serial No.	Parts catalogue code
13	91501-Z0H-000	COLLAR, TANK GUARD	2	-----	SAT,SAT/A,SAUT,SAUT/A,SCT,SCT/A,SDT,SDT/A,SEGT,SET,SET/A,SJT,SJT/A,SLT SUT,SUT/A



Service item

F.R.T.

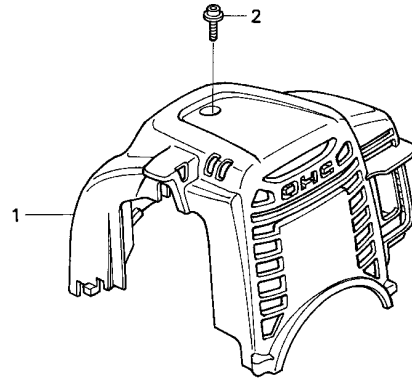


Z0Z0 - E1900

Ref. No.	Part No.	Description	Reqd. QTY GX35	Serial No.	Parts catalogue code
1	30500-Z0Z-003	COIL ASSY., IGNITION	1	-----	SAT,SAT/A,SAU,SAU/A,SAUT,SAUT/A,SA2,SA2/A,SCT,SCT/A,SC2,SC2/A,SD,SD/A,SDS
	30500-Z0Z-013	1	-----	SDT,SDT/A,SE,SE/A,SEGT,SET,SET/A,SJ,SJ/A,SJS,SJT,SJT/A,SUT,SUT/A
2	30522-Z0Z-000	CLIP, HIGH TENSION CORD	1	-----	SLT
3	31110-Z0Z-003	FLYWHEEL COMP.	1	-----	
4	32195-Z0Z-000	CORD, STOP SWITCH	1	-----	
5	90012-Z0H-005	BOLT, SOCKET, 4X14	2	-----	
6	94050-08000	NUT, FLANGE, 8MM	1	-----	

Service item

F.R.T.



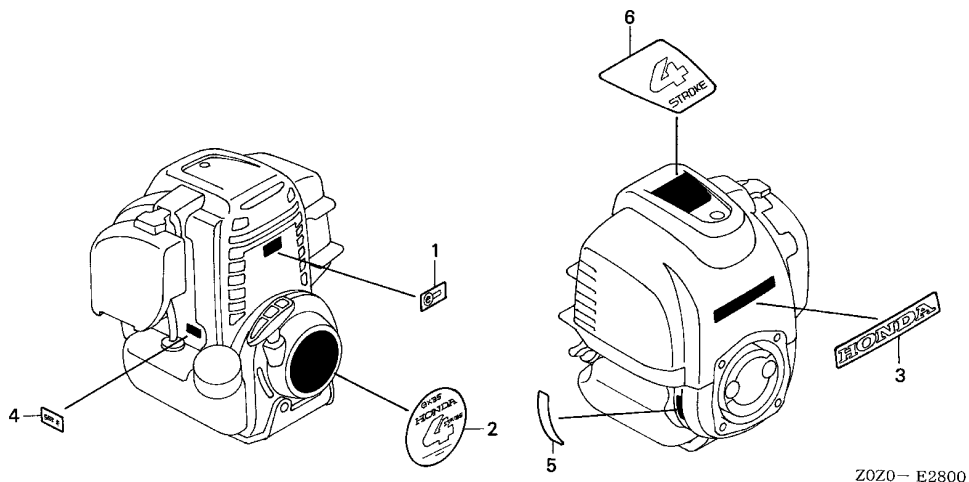
Z0Z0 - E2700

Ref. No.	Part No.	Description	Reqd. QTY GX35	Serial No.	Parts catalogue code
1	19720-Z0Z-000ZA	COVER COMP., TOP *R280*.....POWER RED	1	-----	SAT, SAT/A, SAU, SAU/A, SAUT, SAUT/A, SA2, SA2/A, SCT, SCT/A, SC2, SC2/A, SD, SD/A, SDS, SDT, SDT/A, SE, SE/A, SET, SET/A, SJ, SJ/A, SJS, SJT, SJT/A, SLT, SUT, SUT/A
	19720-Z0Z-000ZB	*T92*.....STIGA YELLOW	1	-----	SEGT
2	90015-Z0H-003	BOLT, TOP COVER	1		



Service item

F.R.T.

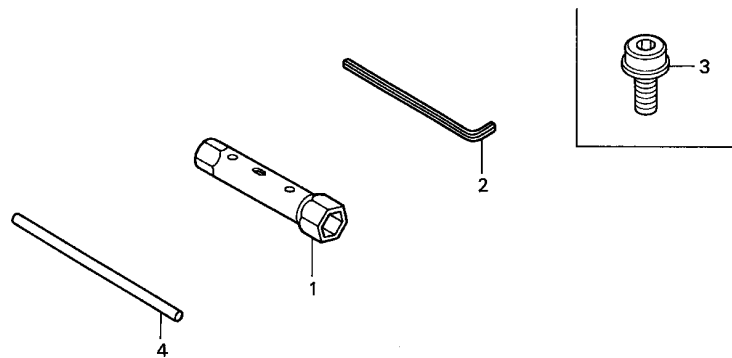


ZOH-E2800

Ref. No.	Part No.	Description	Reqd. QTY GX35	Serial No.	Parts catalogue code
1	87135-ZE2-020	LABEL, E-SPEC (15.5X27.5) ...	1	-----	SAU,SAU/A,SAUT,SAUT/A,SD,SD/A,SDS,SDT,SDT/A,SJ,SJ/A,SJS,SJT,SJT/A,SUT SUT/A
2	87521-ZOZ-000	MARK, EMBLEM	1	-----	
3	87531-ZOZ-000	MARK, HONDA	1	-----	SAT,SAT/A,SAU,SAU/A,SAUT,SAUT/A,SA2,SA2/A,SCT,SCT/A,SC2,SC2/A,SD,SD/A,SDS SDT,SDT/A,SE,SE/A,SET,SET/A,SJ,SJ/A,SJS,SJT,SJT/A,SLT,SUT,SUT/A
4	87601-ZOH-800	MARK, TYPE (SJ)	1	-----	SJ,SJ/A
	87601-ZOH-810	MARK, TYPE (SJT)	1	-----	SJT,SJT/A
	87601-ZOH-820	MARK, TYPE (SC2)	1	-----	SC2,SC2/A
	87601-ZOH-830	MARK, TYPE (SE)	1	-----	SE,SE/A
	87601-ZOH-840	MARK, TYPE (SET)	1	-----	SET,SET/A
	87601-ZOH-850	MARK, TYPE (SA2)	1	-----	SA2,SA2/A
	87601-ZOH-860	MARK, TYPE (SAT)	1	-----	SAT,SAT/A
	87601-ZOH-870	MARK, TYPE (SAU)	1	-----	SAU,SAU/A
	87601-ZOH-880	MARK, TYPE (SAUT)	1	-----	SAUT,SAUT/A
	87601-ZOH-890	MARK, TYPE (SD)	1	-----	SD,SD/A
	87601-ZOH-900	MARK, TYPE (SDT)	1	-----	SDT,SDT/A
	87601-ZOH-950	MARK, TYPE (SUT)	1	-----	SUT,SUT/A
	87601-ZOZ-800	MARK, TYPE (SCT)	1	-----	SCT,SCT/A
	87601-ZOH-V10	MARK, TYPE (SEGT)	1	-----	SEGT
	87601-ZOZ-V20	MARK, TYPE (SDS)	1	-----	SDS
	87601-ZOH-940	MARK, TYPE (SJS)	1	-----	SJS
	87601-ZOZ-V30	MARK, TYPE (SLT)	1	-----	SLT
5	87637-ZM3-800	MARK (C-TICK)	1	-----	SAU,SAU/A,SAUT,SAUT/A,SUT,SUT/A
6	87660-ZOZ-J00	MARK (4-STROKE)	1	-----	SUT,SUT/A
	87660-ZOZ-000	1	-----	SAT,SAT/A,SAU,SAU/A,SAUT,SAUT/A,SA2,SA2/A,SCT,SCT/A,SC2,SC2/A,SD,SD/A,SDS SDT,SDT/A,SE,SE/A,SEGT,SET,SET/A,SJ,SJ/A,SJS,SJT,SJT/A,SLT

Service item

F.R.T.



Z0Z0 - E2900

Ref. No.	Part No.	Description	Reqd. QTY GX35	Serial No.	Parts catalogue code
1	89216-045-010	WRENCH, SPARK PLUG	(1)		
2	89221-KW3-000	WRENCH, HEX., 4MM	(1)		
3	90011-Z0H-811	BOLT, SOCKET, 5X9	1	-----	SUT,SUT/A
			(1)	-----	SAT,SAT/A,SAU,SAU/A,SAUT,SAUT/A,SA2,SA2/A,SCT,SCT/A,SC2,SC2/A,SD,SD/A,SDS SDT,SDT/A,SE,SE/A,SEGT,SET,SET/A,SJ,SJ/A,SJS,SJT,SJT/A,SLT
4	99005-01000	BAR A, HANDLE	(1)		



PART NAME INDEX

E 1

Part name	Address	Page	Ref.	Part name	Address	Page	Ref.	Part name	Address	Page	Ref.
[A]				[D]				[O]			
ARM, EX. VALVE ROCKER	C2	13	26	DIAPHRAGM ASSY., METERING	C7	18	3	OIL SEAL, 10X20X5	C3	14	5
ARM, IN. VALVE ROCKER	C2	13	25	DIAPHRAGM, PUMP	C7	18	4	OIL SEAL, 15X25X6	C3	14	6
ARM, SWING	C5	16	11	[E]				O-RING	C7	18	14
ARRESTER COMP., SPARK	C10	21	2	ELEMENT, AIR CLEANER	C9	20	1	O-RING, 12.3X2.4	C8	19	29
[B]				[F]				O-RING, 14.8X2.4	C8	19	28
BAR A, HANDLE	C16	27	4	[G]				[P]			
BELT, TIMING	C4	15	4	GASKET, METERING DIAPHRAGM	C7	18	1	PACKING, CARBURETOR	C8	19	24
BODY ASSY., AIR PURGE	C7	18	6	GASKET, PUMP	C7	18	2	PACKING, OIL FILLER CAP	C1	12	11
BODY ASSY., PUMP	C7	18	5	GROMMET, FUEL TUBE	C11	22	1	PIN, METERING LEVER	C7	18	11
BOLT, 5X53	C8	19	26	GROMMET, HEAD COVER	C1	12	4	PIN, PISTON	C3	14	3
BOLT, CLUTCH	C6	17	3	GUARD, TANK	C11	22	4	PIN, SPRING, 4X10	C2	13	22
BOLT, SOCKET, 4X14	C13	24	5	GUIDE COMP., UNDER AIR	C10	21	4	PISTON	C3	14	2
BOLT, SOCKET, 5X12	C2	13	19	GUIDE, AIR	C10	21	3	PLATE ASSY., OIL OUTLET VALVE	C1	12	7
BOLT, SOCKET, 5X16	C5	16	5	GUIDE, ROPE	C5	16	9	PLATE, STOPPER	C1	12	9
			6	[J]				PLUG, SPARK	C1	12	13
			27	JET	C8	19	30	PULLEY COMP., CAMSHAFT	C4	15	3
			20	[K]				PULLEY, RECOIL STARTER	C5	16	2
			21	KNOB, RECOIL STARTER	C5	16	3	PUMP, PRIMER	C7	18	21
			6	[L]				[R]			
			11	LABEL, E-SPEC	C15	26	1	REEL, RECOIL STARTER	C5	16	8
BOLT, SOCKET, 5X20	C1	12	14	LEVER, METERING	C7	18	12	RETAINER, VALVE SPRING	C4	15	8
			5	LIFTER COMP., EX. VALVE	C2	13	28	RING SET, PISTON	C3	14	1
BOLT, SOCKET, 5X25	C9	20	4	LIFTER COMP., IN. VALVE	C2	13	27	RING, RETAINING	C7	18	13
BOLT, SOCKET, 5X30	C11	22	10	[M]				ROLLER, 4X31.8	C4	15	2
BOLT, SOCKET, 5X32	C1	12	15	MARK	C15	26	5	ROPE, RECOIL STARTER	C5	16	4
BOLT, SOCKET, 5X9	C16	27	3	MARK, EMBLEM	C15	26	2	RUBBER, TANK MOUNTING	C11	22	3
BOLT, STUD, 2.5X45.5	C10	21	5	MARK, HONDA	C15	26	3	[S]			
BOLT, STUD, B	C5	16	15	MARK, TYPE	C15	26	4	SCREEN, INLET	C7	18	7
BOLT, TOP COVER	C14	25	2	MUFFLER COMP.	C10	21	1	SCREW, METERING LEVER PIN	C7	18	10
[C]				[N]				SCREW, PAN, 3X5	C2	13	21
CAP ASSY., FUEL TANK	C11	22	5	NUT, FLANGE, 5MM	C9	20	6	SCREW, PAN, 4X8	C1	12	16
			6	NUT, FLANGE, 8MM	C13	24	6	SCREW, PUMP COVER	C7	18	18
CAP ASSY., OIL FILLER	C1	12	10	NUT, SELF-LOCK, 5MM	C10	21	8	SCREW, SETTING	C5	16	12
CARBURETOR ASSY.	C8	19	23	NUT, TAPPET ADJUSTING	C2	13	20	SCREW, TAPPET ADJUSTING	C1	12	18
CASE COMP., AIR CLEANER	C9	20	2	[T]				SCREW, TAPPING, 4X6	C10	21	7
CASE, RECOIL STARTER	C5	16	7	TANK, FUEL	C11	22	2	SCREW, THROTTLE COLLAR	C7	18	17
CLAMP, TUBE	C2	13	23	TUBE, BREATHER	C1	12	12	SEAL, HEAD COVER	C1	12	3
			24	<div style="font-size: 48pt; font-weight: bold; border: 2px solid black; border-radius: 50%; width: 40px; height: 40px; display: flex; align-items: center; justify-content: center; margin: 0 auto;">4</div>							
CLIP, HIGH TENSION CORD	C13	24	2								
CLIP, TUBE	C11	22	12								
CLUTCH ASSY.	C6	17	2								
COIL ASSY., IGNITION	C13	24	1								
COLLAR	C5	16	13								
COLLAR A, HEAD COVER	C5	16	14								
COLLAR, TANK GUARD	C12	23	13								
CORD, STOP SWITCH	C13	24	4								
COVER COMP., TOP	C14	25	1								
COVER, AIR CLEANER	C9	20	3								
COVER, CYLINDER HEAD	C1	12	2								
COVER, FAN	C6	17	1								
COVER, PRIMER PUMP	C7	18	15								
CRANKCASE SET	C1	12	1								
CRANKSHAFT COMP.	C3	14	4								

PART NAME INDEX

E 2

Part name	Address	Page	Ref.	Part name	Address	Page	Ref.	Part name	Address	Page	Ref.
TUBE, FUEL RETURN	C11	22	9								
TUBE, FUEL TANK	C11	22	8								
TUBE, OIL	C1	12	6								
[V]											
VALVE, EX.	C4	15	6								
VALVE, INLET NEEDLE	C7	18	8								
VALVE, IN.	C4	15	5								
VALVE, OIL OUTLET	C1	12	8								
[W]											
WASHER	C7	18	20								
WASHER, CLUTCH	C6	17	4								
WASHER, WAVE	C6	17	6								
WRENCH, HEX., 4MM	C16	27	2								
WRENCH, SPARK PLUG	C16	27	1								

1

FOREWORD INDEX

2

ENGINE GROUP

3

PART NUMBER INDEX

4

PART NAME INDEX

HONDA
The Power of Dreams



PARTS CATALOG NEWS

Honda Motor Co., Ltd. Service Division

PARTS CATALOG - CORRECTED

Printed in Japan

CODE NO.	14Z0Z403
PARTS CATALOG TITLE	GX35
NEWS NO.	001

Block No.	Ref. No.	Note	Part No.	Description	Reqd. QTY	Serial No.	Parts catalog code
					GX 35		
E-14	2	L	16011-Z0H-003	GASKET, PUMP	1	----- WYB 14A	SD/A, SDS, SDT/A, SJ/A, SJS, SJT/A
				(CARBURETOR NO.)	1	----- WYB 15A	SAU/A, SAUT/A, SUT/A
				(CARBURETOR NO.)	1	----- WYB 16B	SAT/A, SA2/A, SCT/A, SC2/A, SE/A, SEGT, SET/A, SLT
	D	16011-Z0H-013	(CARBURETOR NO.)	1	WYB 14B -----	SD/A, SDS, SDT/A, SJ/A, SJS, SJT/A	
			(CARBURETOR NO.)	1	WYB 15B -----	SAU/A, SAUT/A, SUT/A	
			(CARBURETOR NO.)	1	WYB 16C -----	SAT/A, SA2/A, SCT/A, SC2/A, SE/A, SEGT, SET/A, SLT	
	5	L	16015-Z0H-003	BODY ASSY., PUMP	1	----- WYB 14A	SD/A, SDS, SDT/A, SJ/A, SJS, SJT/A
				(CARBURETOR NO.)	1	----- WYB 15A	SAU/A, SAUT/A, SUT/A
				(CARBURETOR NO.)	1	----- WYB 16B	SAT/A, SA2/A, SCT/A, SC2/A, SE/A, SEGT, SET/A, SLT
		D	16015-Z0H-013	(CARBURETOR NO.)	1	WYB 14B -----	SD/A, SDS, SDT/A, SJ/A, SJS, SJT/A
				(CARBURETOR NO.)	1	WYB 15B -----	SAU/A, SAUT/A, SUT/A
				(CARBURETOR NO.)	1	WYB 16C -----	SAT/A, SA2/A, SCT/A, SC2/A, SE/A, SEGT, SET/A, SLT

NOTE A:PART NO. CHANGE D:NEWLY PROVIDED E:PART NO.DELETION K:REQUIRED NO. CORRECTION L:APPLICATION SERIAL NO. CORRECTION
T:APPLICATION CORRECTION Z:REMARKS CHANGE

June 27, 2005



PARTS CATALOG NEWS

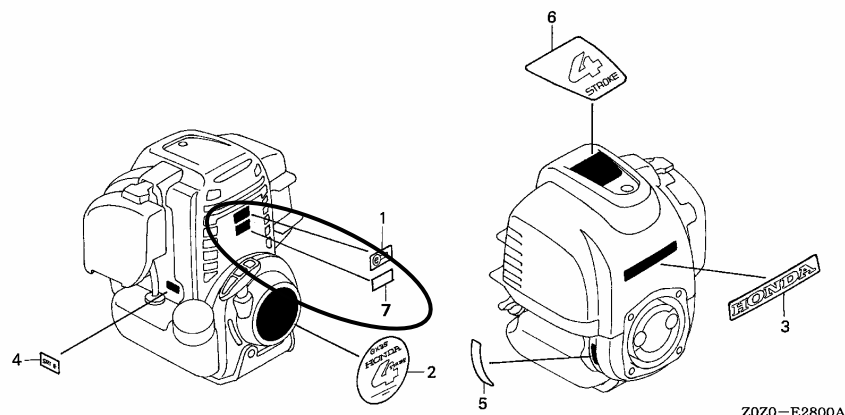
Honda Motor Co., Ltd. Service Division

PARTS CATALOG - CORRECTED

Printed in Japan

CODE NO.	14Z0Z403
PARTS CATALOG TITLE	GX35
NEWS NO.	002

Block No.	Ref. No.	Note	Part No.	Description	Reqd. QTY	Serial No.	Parts catalog code
E-28				LABEL	GX 35		



ZOZO-E2800A

E-28	7	D	87114-ZH7-000	LABEL, WARNING (NOT CERTIFIED FOR SALE)	1	1159127	-----	SD/A, SDS, SDT/A, SJ/A, SJS, SJT/A
------	---	---	---------------	--	---	---------	-------	------------------------------------

NOTE A:PART NO. CHANGE D:NEWLY PROVIDED E:PART NO.DELETION K:REQUIRED NO. CORRECTION L:APPLICATION SERIAL NO. CORRECTION
T:APPLICATION CORRECTION Z:REMARKS CHANGE

October 09, 2005



PARTS CATALOG NEWS

Honda Motor Co., Ltd. Service Division

PARTS CATALOG - CORRECTED

Printed in Japan

CODE NO.	14Z0Z403
PARTS CATALOG TITLE	GX35
NEWS NO.	003

Block No.	Ref. No.	Note	Part No.	Description	Reqd. QTY	Serial No.		Parts catalog code
					<small>GX 35</small>			
E-14	23	L	16100-Z0Z-803	CARBURETOR ASSY. (WYB 15A) ...	1	1123126	1170924	SAU/A, SAUT/A, SUT/A
			16100-Z0Z-813	CARBURETOR ASSY. (WYB 14A) ...	1	-----	1167584	SDS, SJS
					1	1108556	1167584	SD/A, SDT/A, SJ/A, SJT/A
			16100-Z0Z-024	CARBURETOR ASSY. (WYB 16B) ...	1	-----	1168438	SLT
					1	1136059	1168438	SAT/A, SA2/A, SCT/A, SC2/A, SE/A, SEGT, SET/A
			16100-Z0Z-804	CARBURETOR ASSY. (WYB 15B) ...	1	1170925	-----	SAU/A, SAUT/A, SUT/A
			16100-Z0Z-814	CARBURETOR ASSY. (WYB 14B) ...	1	1167585	-----	SD/A, SDS, SDT/A, SJ/A, SJS, SJT/A
		1	1168439	-----	SAT/A, SA2/A, SCT/A, SC2/A, SE/A, SEGT, SET/A, SLT			
E-16	4	L	18518-Z0Z-000	GUIDE COMP., UNDER AIR	1	-----	1186547	SAT/A, SAU/A, SAUT/A, SA2/A, SCT/A, SC2/A, SD/A, SDS, SDT/A, SE/A, SEGT, SET/A, SJ/A, SJS, SJT/A, SLT, SUT/A
			18518-Z0Z-010	1	1186548	-----	SAT/A, SAU/A, SAUT/A, SA2/A, SCT/A, SC2/A, SD/A, SDS, SDT/A, SE/A, SEGT, SET/A, SJ/A, SJS, SJT/A, SLT, SUT/A
E-19	1	L	30500-Z0Z-003	COIL ASSY., IGNITION	1	-----	1147205	SAT/A, SAU/A, SAUT/A, SA2/A, SCT/A, SC2/A, SD/A, SDS, SDT/A, SE/A, SEGT, SET/A, SJ/A, SJS, SJT/A, SUT/A
			T	30500-Z0Z-013	1	1147206	-----

NOTE A:PART NO. CHANGE D:NEWLY PROVIDED E:PART NO.DELETION K:REQUIRED NO. CORRECTION L:APPLICATION SERIAL NO. CORRECTION
T:APPLICATION CORRECTION Z:REMARKS CHANGE

PARTS CATALOG NEWS

BOOKNo. : 14ZOZ403

Block No.	Ref. No.	Note	Part No.	Description	Reqd. QTY	Serial No.	Parts catalog code
E-28	7	D	87114-ZH7-810	LABEL, WARNING (NOT CERTIFIED FOR SALE)	1	1226976 -----	SAU/A, SAUT/A, SUT/A

NOTE A:PART NO. CHANGE D:NEWLY PROVIDED E:PART NO.DELETION K:REQUIRED NO. CORRECTION L:APPLICATION SERIAL NO. CORRECTION
T:APPLICATION CORRECTION Z:REMARKS CHANGE

October 23, 2005



PARTS CATALOG NEWS

Honda Motor Co., Ltd. Service Division

PARTS CATALOG - CORRECTED

Printed in Japan

CODE NO.	14Z0Z403
PARTS CATALOG TITLE	GX35
NEWS NO.	004

Block No.	Ref. No.	Note	Part No.	Description	Reqd. QTY	Serial No.	Parts catalog code
					GX 35		
E-2	1	L	10100-Z0Z-405	CRANKCASE SET	1	----- 1183074	SAT/A, SAU/A, SAUT/A, SA2/A, SCT/A, SC2/A, SD/A, SDS, SDT/A, SE/A SEGT, SET/A, SJ/A, SJS, SJT/A, SLT, SUT/A
			D	10100-Z3F-405	1	1183075 -----
E-10	1	L	12209-Z0H-003	SEAL, VALVE STEM	1	----- 1183074	SAT/A, SAU/A, SAUT/A, SA2/A, SCT/A, SC2/A, SD/A, SDS, SDT/A, SE/A SEGT, SET/A, SJ/A, SJS, SJT/A, SLT, SUT/A
			D	12209-Z3E-000	1	1183075 -----
	5	L	14711-Z0Z-000	VALVE, IN.	1	----- 1183074	SAT/A, SAU/A, SAUT/A, SA2/A, SCT/A, SC2/A, SD/A, SDS, SDT/A, SE/A SEGT, SET/A, SJ/A, SJS, SJT/A, SLT, SUT/A
			D	14711-Z0Z-800	1	1183075 -----
	6	L	14721-Z0Z-000	VALVE, EX.	1	----- 1183074	SAT/A, SAU/A, SAUT/A, SA2/A, SCT/A, SC2/A, SD/A, SDS, SDT/A, SE/A SEGT, SET/A, SJ/A, SJS, SJT/A, SLT, SUT/A
			D	14721-Z0Z-800	1	1183075 -----
E-28	7	L	87114-ZH7-000	LABEL, WARNING (NOT CERTIFIED FOR SALE)	1	1159127 1186547	SD/A, SDS, SDT/A, SJ/A, SJS, SJT/A
			T	87114-ZH7-810	1	1186548 -----

NOTE A:PART NO. CHANGE D:NEWLY PROVIDED E:PART NO.DELETION K:REQUIRED NO. CORRECTION L:APPLICATION SERIAL NO. CORRECTION
T:APPLICATION CORRECTION Z:REMARKS CHANGE

November 13, 2005



PARTS CATALOG NEWS

Honda Motor Co., Ltd. Service Division

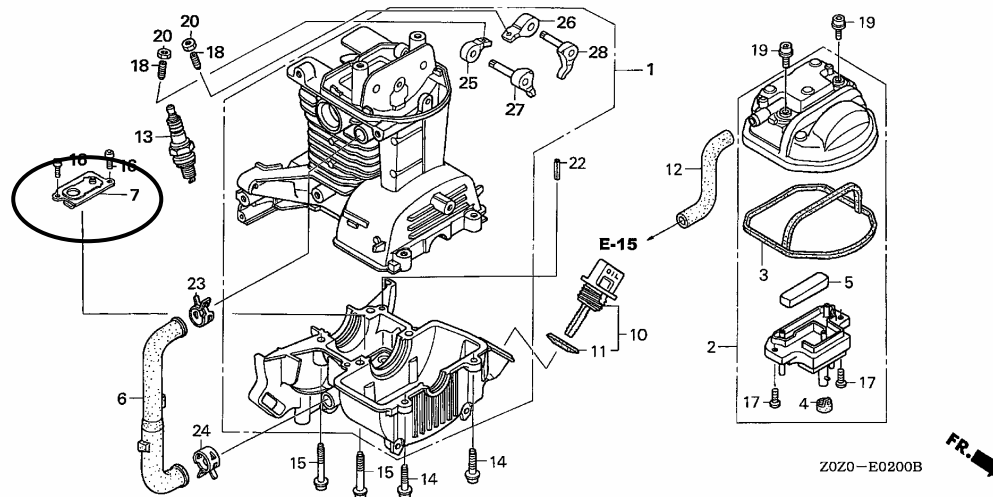
PARTS CATALOG - CORRECTED

Printed in Japan

CODE NO.	14Z0Z403
PARTS CATALOG TITLE	GX35
NEWS NO.	005

Block No.	Ref. No.	Note	Part No.	Description	Reqd. QTY	Serial No.	Parts catalog code
					GX 35		

E-2 CRANKCASE SET



E-2	8	E	15571-ZM3-003	*PARTS NO. DELETION			
	9	E	15572-ZOH-000	*PARTS NO. DELETION			

NOTE A:PART NO. CHANGE D:NEWLY PROVIDED E:PART NO.DELETION K:REQUIRED NO. CORRECTION L:APPLICATION SERIAL NO. CORRECTION
T:APPLICATION CORRECTION Z:REMARKS CHANGE

PARTS CATALOG NEWS

BOOKNo. : 14ZOZ403

Block No.	Ref. No.	Note	Part No.	Description	Reqd. QTY	Serial No.	Parts catalog code
	21	E	93500-03005-0A	*PARTS NO. DELETION	GX 35		

NOTE A:PART NO. CHANGE D:NEWLY PROVIDED E:PART NO.DELETION K:REQUIRED NO. CORRECTION L:APPLICATION SERIAL NO. CORRECTION
T:APPLICATION CORRECTION Z:REMARKS CHANGE

September 03, 2006



PARTS CATALOG NEWS

Honda Motor Co., Ltd. Service Division

PARTS CATALOG - CORRECTED

Printed in Japan

CODE NO.	14Z0Z403
PARTS CATALOG NEWS	GX35
NEWS NO.	006

Block No.	Ref. No.	Note	Part No.	Description	Reqd. QTY	Serial No.	Parts catalog code
					GX 35		
E-11	10	E	28442-ZM3-003	*PARTS NO. DELETION			
		D	28442-ZOH-003	SPRING, RECOIL STARTER	1		

NOTE A:PART NO. CHANGE D:NEWLY PROVIDED E:PART NO.DELETION K:REQUIRED NO. CORRECTION L:APPLICATION SERIAL NO. CORRECTION
T:APPLICATION CORRECTION Z:REMARKS CHANGE

October 01, 2006



PARTS CATALOG NEWS

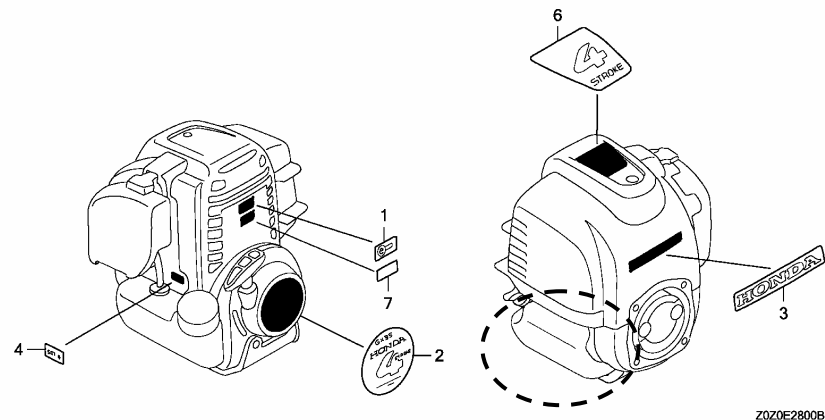
Honda Motor Co., Ltd. Service Division

PARTS CATALOG - CORRECTED

Printed in Japan

CODE NO.	14Z0Z403
PARTS CATALOG NEWS	GX35
NEWS NO.	007

Block No.	Ref. No.	Note	Part No.	Description	Reqd. QTY	Serial No.	Parts catalog code
E-28				LABEL	GX 35		



Z0Z0E2800B

E-28 5 E 87637-ZM3-800 *PARTS NO. DELETION

NOTE A:PART NO. CHANGE D:NEWLY PROVIDED E:PART NO.DELETION K:REQUIRED NO. CORRECTION L:APPLICATION SERIAL NO. CORRECTION
T:APPLICATION CORRECTION Z:REMARKS CHANGE

October 22, 2006



PARTS CATALOG NEWS

Honda Motor Co., Ltd. Service Division

PARTS CATALOG - CORRECTED

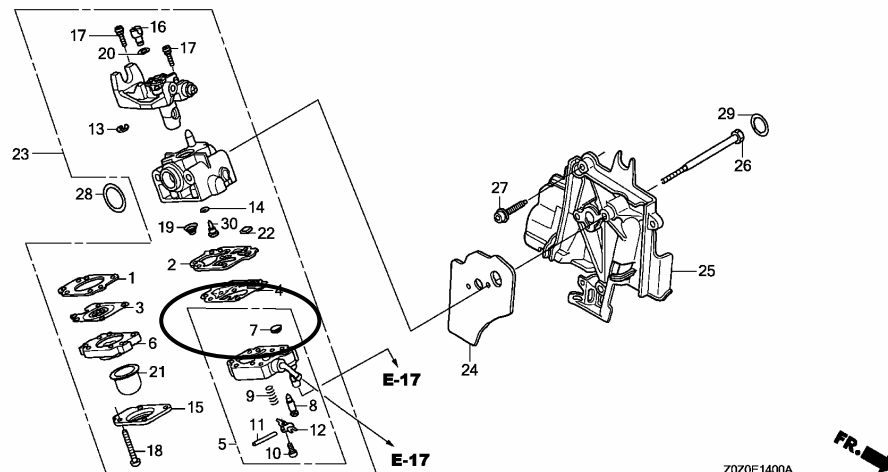
Printed in Japan

CODE NO.	14Z0Z403
PARTS CATALOG NEWS	GX35
NEWS NO.	008

Block No.	Ref. No.	Note	Part No.	Description	Reqd. QTY	Serial No.	Parts catalog code
					GX 35		

E-14 CARBURETOR

ILLUSTRATION CORRECTED



NOTE A:PART NO. CHANGE D:NEWLY PROVIDED E:PART NO.DELETION K:REQUIRED NO. CORRECTION L:APPLICATION SERIAL NO. CORRECTION
T:APPLICATION CORRECTION Z:REMARKS CHANGE

April 23, 2007



PARTS CATALOG NEWS

Honda Motor Co., Ltd. Service Division

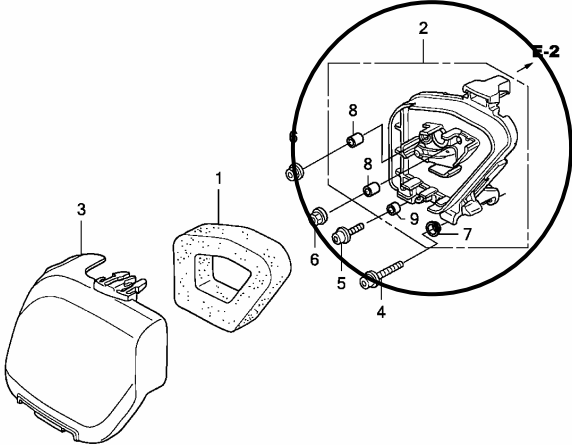
PARTS CATALOG - CORRECTED

Printed in Japan

CODE NO.	14Z0Z403
PARTS CATALOG NEWS	GX35
NEWS NO.	009

Block No.	Ref. No.	Note	Part No.	Description	Reqd. QTY	Serial No.	Parts catalog code
					GX 35		

E-15 AIR CLEANER



Z0Z0E1500A

E-15	7	D	91501-Z0Z-000	COLLAR, AIR CLEANER CASE	1		
	8	D	91503-ZM3-000	COLLAR, AIR CLEANER	2		

NOTE A:PART NO. CHANGE D:NEWLY PROVIDED E:PART NO. DELETION K:REQUIRED NO. CORRECTION L:APPLICATION SERIAL NO. CORRECTION
T:APPLICATION CORRECTION Z:REMARKS CHANGE

PARTS CATALOG NEWS

BOOKNo. : 14ZOZ403

Block No.	Ref. No.	Note	Part No.	Description	Reqd. QTY	Serial No.	Parts catalog code
	9	D	91506-ZM3-000	COLLAR A, HEAD COVER	1		

NOTE A:PART NO. CHANGE D:NEWLY PROVIDED E:PART NO.DELETION K:REQUIRED NO. CORRECTION L:APPLICATION SERIAL NO. CORRECTION
 T:APPLICATION CORRECTION Z:REMARKS CHANGE