

PARTS LIST

TAMPING RAMMER

MT-55

305-02402

MIKASA SANGYO CO.,LTD.

PARTS REMARK INDEX

How to read the marks and remarks used in this parts book.

Section 1 : Explanation of Code Use In “MRK” Column

OO : Interchangeable between the new part and the old one.

XX : Not Interchangeable between new and old.

OX : New part is usable for the old machine but the old part is not usable for the new machine.

XO : The old part is usable for the new machine but the new part is not usable for the old machine.

Note : In case of the lack of interchangeability between the new part and old part, a new part may be used by replacing all other parts found in the assembly. In this case, refer to section 2 for instruction on identifying other parts involved in a new assembly.

AD : Newly established(added)

DC : Suspended(discontinued)

NC : Part number changed

QC : Quantity used has been changed

NS : Not supplied individually but supplied in an assembly or a group.

AS : Special part designed to allow interchangeability between new and old part.

CR : Correction

Section 2 : Items Found In “Remark” Column

Serial Numbers — Where indicated, this indicates a serial number range (inclusive) where a particular part is used.

Model Number — Where indicated, this shows that the corresponding part is utilized only with this specific model number or model number variant.

or * : All parts with the same number following # or * belong to the same assembly. this part cannot be interchanged individually with any other assemblies to replace an old part (indicated by #), with a new part(indicated by *), then all other parts of that assembly must be replaced with new ones.

Note : If more than one of the same reference number is listed, the last one listed indicates newest(or latest)part available.

Section 3: Example

REF NO.	PART NO.	PART NAME	QTY	MRK	REMARKS
457(1)	5122-09230	Hinge Metal, Upper/24g	1		-1070 #3 (5)
457(2)	5072-09420	Hinge Metal, Upper M16	1	OX(3)	U1071-(6) * 3(7)

(1) Old part

(2) New part

(3) New part usable with old machine, but old part not usable with new machine (reference section 1).

(4) Old part number is used through this machine serial number.

(5) Old part, used in an assembly with other parts marked with #3. To use this part on a new machine, all other parts in this assembly must be replaced with old ones.

(6) New part put into use starting with this serial number and is still current.

(7) New part used in an assembly with other parts marked * 3, to use this part as a replacement for an old part, all other * 3 marked parts must be changed at the same time.

Section 4: Items Found In “MK2” Column

(only for suspended products)

! OO (“OO” is shown in figure) : The part shown in lower line is supplied.

! SD : Not available due to termination of production.

! NS : Not supplied individually, but supplied in an assembly or a group.

! PD : Supplied as unit product.

SS : Not available after stock run out.

(The contents of this parts catalog are subject to change without notice.)

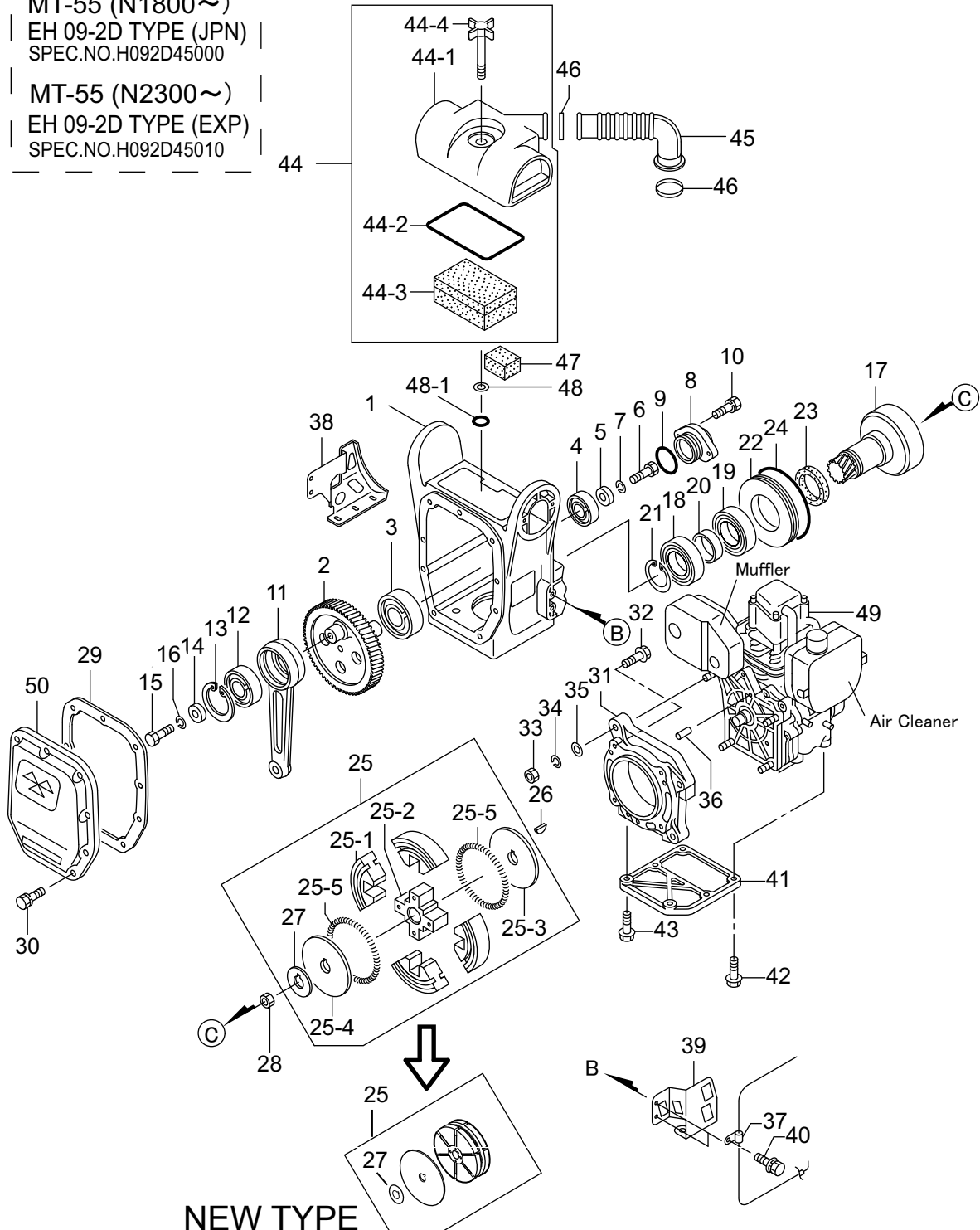
MT-55 CRANKCASE & ENGINE / クランクケース&エンジン

3IP0

NEW ENGINE

MT-55 (N1800~)
EH 09-2D TYPE (JPN)
SPEC.NO.H092D45000

MT-55 (N2300~)
EH 09-2D TYPE (EXP)
SPEC.NO.H092D45010



NEW TYPE
Serial No.N8684-

CRANK CASE & ENGINE

** 3IP

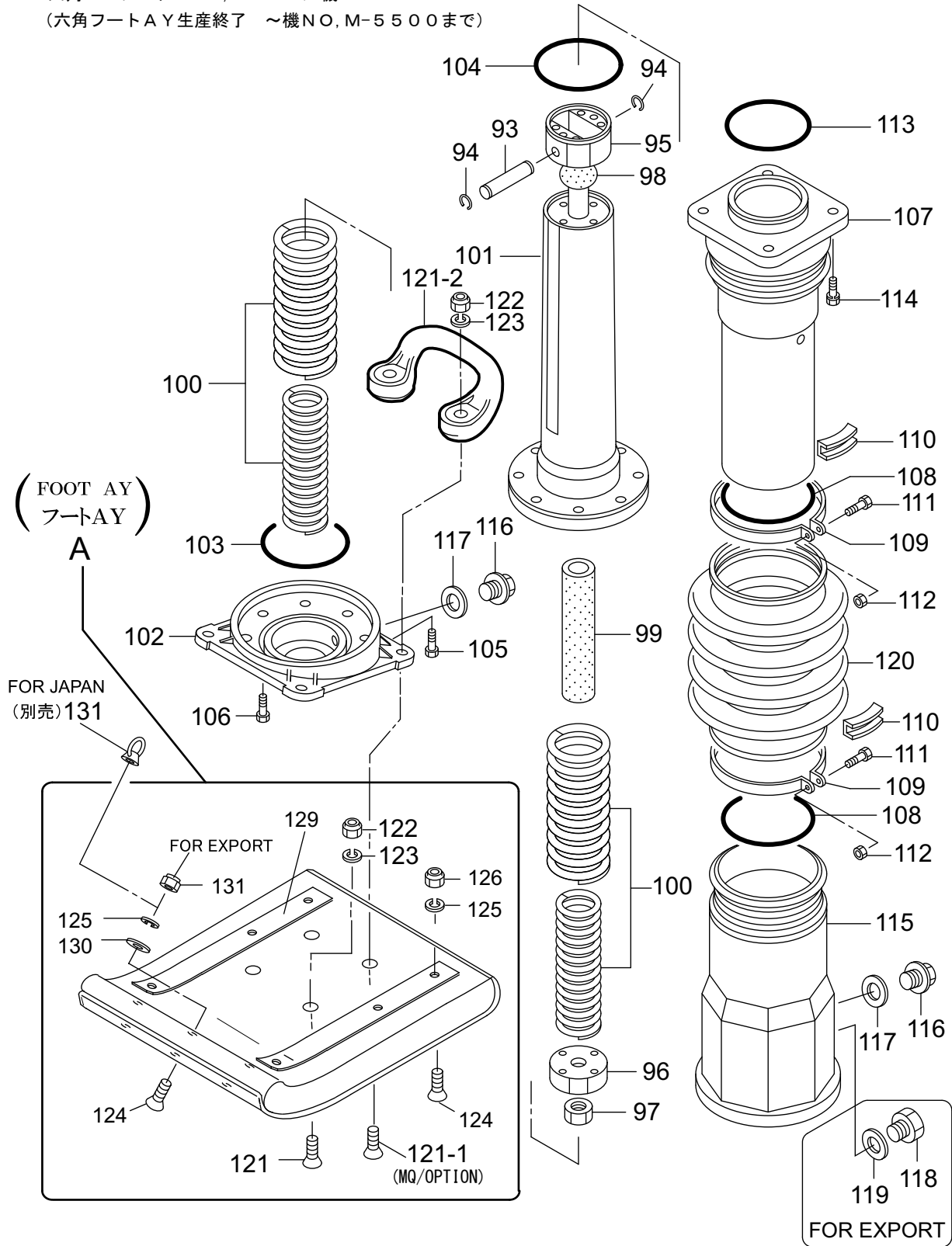
**

REF NO.	PART NO.	PART NAME	Q' TY	MRK	MK2	REMARKS
1	3621-16510	CRANK CASE /MT-55	1			
2	3623-41650	CRANK GEAR 1300-59Z/MT-55	1			
2	3623-42640	CRANK GEAR / MT-55FO	1			OKINAWA
3	0400-06305	BEARING 6305	1			
4	0400-06203	BEARING 6203	1			
5	9524-01450	WASHER 8. 5X22X3	1			
6	0012-20825	BOLT 8X25 T	1			
7	0302-08200	SW M8	1			
8	3624-55660	BEARING COVER /MT-55	1			
9	0501-00350	O-RING G-35	1			
10	0022-00620	BOLT 6X20 SW	2			
11	3030-10060	CONNECTING ROD	1			
12	0400-06304	BEARING 6304	1			
13	0801-00520	STOP RING R-52	1			
14	9524-00130	WASHER 9304	1			
15	0012-20825	BOLT 8X25 T	1			
16	0302-08200	SW M8	1			
17	3030-10084	PINION /MT-50V, 52FW, 55	1			
18	0400-06007	BEARING 6007	1			
19	0410-06007	BEARING 6007Z	1			
20	3514-37750	SPACER 35. 4-42. 7-11/MT50V	1			
21	0802-00350	STOP RING S-35	1			
22	3514-21900	SPACER, CLUTCH DRUM/50	1			
23	0604-04010	OIL SEAL TC-40528	1			
24	0503-00900	O-RING S-90	1			
25	3624-54441	CLUTCH AY/CE120P 1. 6T	1	OX	SS!3614-63840	
25 -1	9430-20020	CLUTCH SHOE C812	4			
25 -2	9430-50050	CLUTCH BOSS C812	1			
25 -3	9430-60100	CLUTCH GAIDE/(A) 1. 6T, 1C	1	OX		-N8683
25 -4	9430-60020	CLUTCH GUIDE/B	1			-N8683
25 -5	9430-30021	CLUTCH SPRING	2			-N8683
25	3633-44170	CLUTCH AY, T81R-S15D /MT	1	XX		N8684-
26	005-32042-01	WOODRUFF KEY	1			
27	3010-10210	LOCK WASHER, CLUTCH	1			
28	017-31200-10	LOCK NUT	1			
29	3623-41610	PACKING, FRONT COVER/MT-55	1			
30	0022-00620	BOLT 6X20 SW	9			
31	274-15001-23	ADAPTER, FLANGE	1			
32	001-14084-00	BOLT & WASHER AY	4			
33	002-18080-00	NUT	4			
34	003-20080-00	SPRING WASHER	4			
35	003-11080-00	WASHER	4			
36	031-00600-20	DOWEL PIN	2			
37	9590-06120	CLIP (TCP2-10509B)	1			
38	3623-41620	OIL GAUGE PROTECTOR/MT-55	1			
39	3623-41630	LINK PROTECTOR /MT-55	1			
40	0024-00820	BOLT 8X20 SW, PW	4			
41	274-16001-13	STIFFENER	1			
42	001-14082-50	BOLT & WASHER	4			
43	001-14083-00	BOLT & WASHER AY	2			
44	3621-16871	AIR CLEANER AY/MT-55, 50WT	1			
44 -1	3620-30011	COVER CP, AIR CLEANER/MT55	1			
44 -2	3620-30020	PACKING, AIR CLEANER/MT-55	1			
44 -3	3620-30030	ELEMENT CP, AIR CLCANER/MT	1			
44 -4	3620-30040	GRIP BOLT CP, AIR CLERNER	1			
45	3623-41210	INTAKE PIPE /MT-55	1			
46	5070-10110	CLAMP TC-200	2			
47	3624-56610	ELEMENT /BREATHER /MT-55	1			EXCEPT. MQ
47	3624-56610	ELEMENT /BREATHER /MT-55	1			MQ55F K8689-
48	0311-08160	PW M8	1			
48 -1	0503-00070	O-RING S-7	1	AD		EXP. K6096-
48 -1	0503-00070	O-RING S-7	1	AD		JPN. K1915-
49	9112-10904	ENGINE AY EH09D (MT-55JPN)	1		!9112-10908	JAPAN
49	9112-10908	ENGINE AY/EH092D/55 JPN	1	OO	SS!9112-10917	
49	9112-10905	ENGINE AY EH09D/MT55-EXP	1		!9112-10909	EXPORT
49	9112-10909	ENGINE AY/EH092D/55/EXP	1	OO		
50	3620-10030	FRONT COVER /MT-55 JP, EXP	1			JAPAN
50	3620-10040	FRONT COVER /MT-55F MQ	1			MQ

MT-55
GUIDE CYLINDER & FOOT/ガイドシリンダー&フート

3IR1

四角フートAY S/N:M5501-機No.M-5501~
(六角フートAY生産終了 ~機NO,M-5500まで)



GUIDE CYLINDER & FOOT

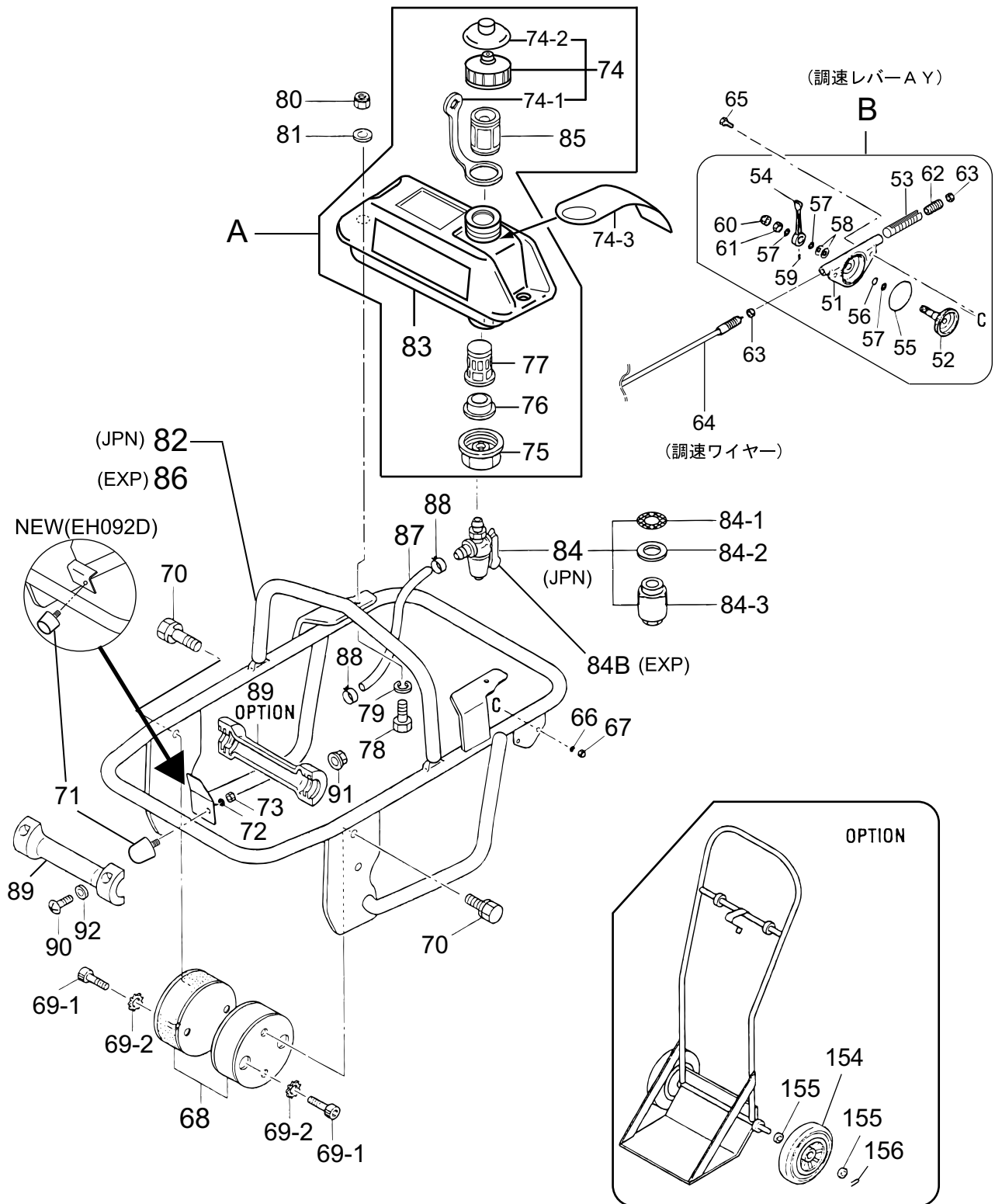
** 3IR

**

REF NO.	PART NO.	PART NAME	Q' TY	MRK	MK2	REMARKS
A	3629-10100	FOOT AY 265 SF-EXP	1		!3629-10150	#1, OLD, SF
A	3629-10150	FOOT AY 265W M4B/S80/MT55	1	00		*1, NEW, SF
93	3514-20390	PISTON PIN	1			
94	0801-00120	STOP RING R-12	2			
95	3513-24120	PISTON ROD /MT-50V	1			
96	3624-55680	PISTON END /MT-55	1			
97	0201-16130	NUT M16, P1.5	1			
98	3514-34200	STOPPER, UPPER /MT-50V	1			
99	3514-34211	STOPPER, LOWER D:30/MT-50V	1			
100	3624-52830	MAIN SPRING A, B/52FW	2			
101	3623-41640	SPRING CYLINDER /MT-55	1			
102	3622-14820	FOOT PLATE /MT-52FW	1			
103	0501-00750	O-RING G-75	1			
104	0509-30850	O-RING JAS03085	1			
105	0015-21020	SOCKET HEAD BOLT 10X20 T	4			
106	0015-21035	SOCKET HEAD BOLT 10X35 T	4			
107	3512-09590	GUIDE CYLINDER /MT-50V	1			
108	0501-00950	O-RING G-95	2			
109	3513-16870	BELLOWS BAND / MT-50, 55	2			
110	3514-33250	BAND GUIDE/BELLOWS	2			
111	0012-20840	BOLT 8X40 T	2			
111	0012-20835	BOLT 8X35 T	2	XO		K9996-
112	0203-08060	NUT M8	2			
113	0501-00800	O-RING G-80	1			
114	0022-11040	BOLT 10X40 H, SW	4			
115	3511-09010	PROTECTION SLEEVE /MT-50V	1			JP, EXP
115	3511-09020	PROTECTION SLEEVE /MT-60H	1			EXPORT
116	9534-05270	PLUG 1/4X14 13L	2			
117	9534-05260	PACKING 1/4 (CU)	2			
118	3664-60300	OIL GAUGE ASSY / MTX	1			EXPORT
119	9534-04670	COPPER PACKING 17X25.5X1	1			EXPORT
120	3533-32870	BELLOWS (OR)/MT-50V	1			
121	0016-11253	SUNK HEAD BOLT 12X65 H	4			#1, OLD, SF
121	0091-10034	BOLT, SQUARE NECK 12X65	4	XX		*1, NEW, SF
121	0016-11253	SUNK HEAD BOLT 12X65 H	2	QC		#1, OLD, SF/MQ
121	0091-10034	BOLT, SQUARE NECK 12X65	2	XX		*1, NEW, SF/MQ
121 -1	0016-11259	SUNK HEAD BOLT 12X95 H	2	AD		#1, OLD, SF/MQ
121	0091-10035	BOLT, SQUARE NECK 12X95	2	XX		*1, NEW, SF/MQ
121 -2	3633-43390	GRIP HANDLEBAR (FOOT/MT)	1	AD		MQ/OPTION
122	0227-11214	NYLON NUT M12	4			
123	0302-12300	SW M12	4			
124	0016-11051	SUNK HEAD BOLT 10X55 H	7	DC		#1, OLD, SF
125	0302-10250	SW M10	7			
126	0227-11012	NYLON NUT M10	6			
127	3623-41760	FOOT 265W /MT-55	1	SD	!SD	
127	3623-44570	FOOT 265W /QUADRANGLE /SF	1	SD	!SD	
128	3623-41770	METAL SHEET 265W /MT-55	1	SD	!SD	
128	3623-44580	METAL SHEET 265W/QUAD. /SF	1	SD	!SD	
129	3624-55760	FOOT FITTING /MT-55	2	SD	!SD	
129	3623-42620	FOOT FITTING (R)/MT-55	1	SD	!SD	
129	3623-42630	FOOT FITTING (L)/MT-55	1	SD	!SD	
129	3624-58650	FOOT FITTING/QUAD. /SF /55	2	SD	!SD	#1, OLD, SF
130	3684-60370	WASHER 11X34X3.2 /LOGO	3			OLD
130	3010-10540	WASHER 11X34X3.2	1		SS!3684-60370	
131	9590-10413	EYE NUT M10	1			JAPAN
131	0227-11012	NYLON NUT M10	1			EXPORT

MT-55
TANK & HANDLE / タンク&ハンドル関係

3IQ0



TANK & HANDLE

** 3IQ

**

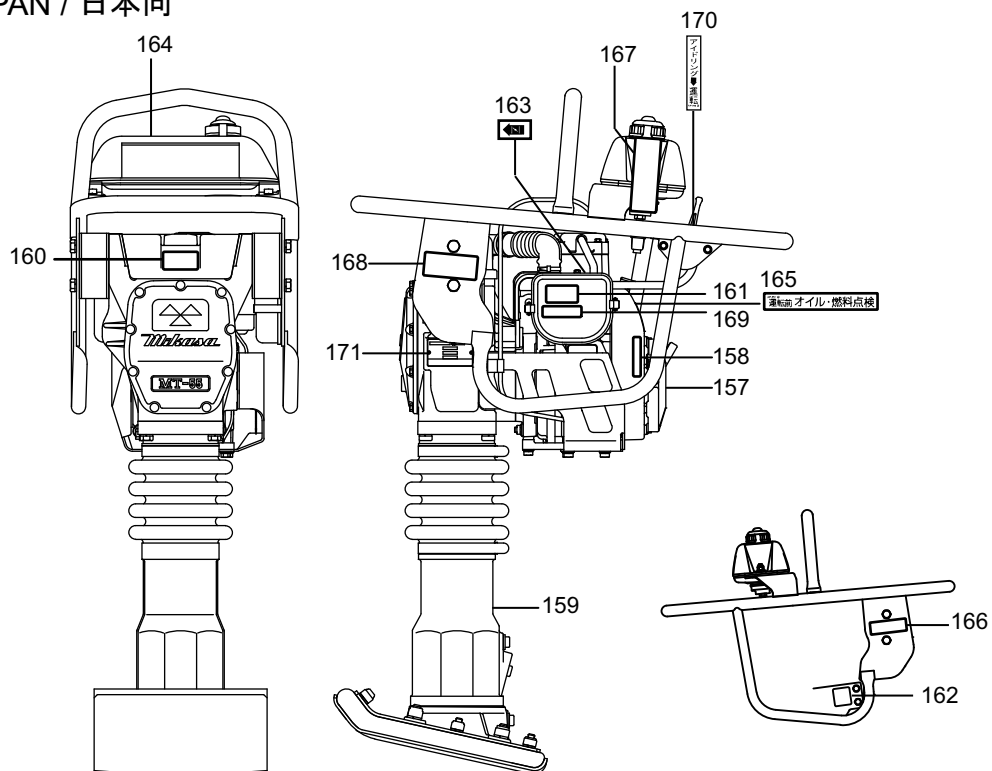
REF NO.	PART NO.	PART NAME	Q' TY	MRK	MK2	REMARKS
A	3059-10034	FUEL TANK AY 2L/MT-55/JP	1			JPN
A	3059-10032	FUEL TANK AY/MT-54F/EXP	1			EXP
B	3629-10060	THROTTLE LEVER AY /MT-55	1			
51	3623-41550	THROTTLE BODY /MT-55	1			
52	3629-10090	THROTTLE, GEAR CP, W/BOLT	1			K7656-
53	3624-55620	SLIDER /MT-55	1			
54	3624-55630	THROTTLE LEVER /MT-55	1			
55	0501-00450	O-RING G-45	1			
56	0502-00100	O-RING P-10	1			
57	0311-10160	PW M10	3			
58	0321-10180	CONICAL SPRING WASHER M10	2			
59	0962-06006	SOCKET HEAD SCREW 6X6	1			
60	0221-31008	CAP NUT M10	1			
61	0204-10060	NUT M10, H=6	1			
62	0962-08020	SOCKET HEAD SCREW 8X20	1			
63	0204-08050	NUT M8, H=5	2			
64	9561-00040	THROTTLE WIRE 620-710	1			
65	0012-20620	BOLT 6X20 T	2			
66	0302-06150	SW M6	2			
67	0221-30605	CAP NUT M6	2			
68	3513-25590	SHOCK ABSORBER 100D-45B	2			
69 -1	0015-21020	SOCKET HEAD BOLT 10X20 T	4			
69 -2	0331-21009	TOOTHED LOCK WASHER B M10	4			
70	0022-11020	BOLT 10X20 H, SW	4			
71	9390-10210	STOPPER RUBBER EH1002	1			#2
71	9390-10270	STOPPER RUBBER (70) /MT	1	XX		*2JPN N1800-
72	0302-08200	SW M8	1			
73	0203-08060	NUT M8	1			
74	3619-10021	TANK CAP CP (ORANGE)/FW	1			
74	3619-10070	TANK CAP AY (OR, DB)/MT	1			MQ
74 -1	3534-49010	STRAP, OIL TANK /MT-HS	1			
74 -2	3624-58350	SUB CAP (BLACK)/PE/MT	1	AS		M6181-
74 -3	9201-09500	TAG, GASOLINE (JAPANESE)	1			FOR JAPAN
75	3514-37785	HOLDER, COCK /MT	1			
76	9544-06020	PACKING, FUEL TANK/MT, MTR	1			
77	9544-06010	STRAINER (#110)	1			
78	0012-20830	BOLT 8X30 T	2		SX	
79	0302-08200	SW M8	2			
80	0227-10809	NYLON NUT M8	2			
81	9524-01450	WASHER 8. 5X22X3	2			
82	3621-17930	HANDLE /MT-55 (JAPAN)	1		!R000187	#2JPN
82	3621-17931	HANDLE/MT-55 (JAPAN)	1	XX		*2JP, VIE
83	3621-16860	F. TANK 2L (GRAY)/JP	1			JAPAN
83	3621-16890	F. TANK 2L (GRAY)/EXP	1			EXPORT
84	9544-05990	FUEL COCK AY CVL-00	1			JP, EXP
84 -1	064-20014-20	SCREEN	1			E/G PARTS
84 -2	064-20014-30	C-07 RUBBER PACKIN##	1			E/G PARTS
84 -3	064-20014-10	CUP	1			E/G PARTS
84 B	9544-06000	FUEL COCK AY N18L-02	1			EXPORT
84 B	9543-00720	FUEL COCK AY /CVL-08	1			EXP L5355-
85	9544-04890	FILTER, TANK /MT	1			JAPAN
85	9544-04890	FILTER, TANK /MT	1	AD		IMER 2002/5-
85	9544-04890	FILTER, TANK /MT	1	AD		FOR HOA PHAT
86	3621-17940	HANDLE / MT-55F	1		SS!R	EXPORT
87	9590-26102	FUEL HOSE /320L	1			
87	3514-36350	FUEL HOSE R-150L D8	2			MQ
87	9590-26199	FUEL HOSE/1M				
88	9544-06420	HOSE BAND 10.5	2			
88	9544-03030	HOSE BAND(8)	4			MQ
89	9552-00052	ROLLER, W/PIN, MT	2		SS!9552-00053	OPTION
90	0910-05025	SCREW 5X25	4			OPTION
91	0226-10505	FLANGE NUT M5 H	4			OPTION
92	0311-05080	PW M5	4			OPTION
93	3014-19750	FUEL FILTER CP, MQ75MIC.	1			MQ
154	9593-00370	WHEEL 18X200X50	2		SS!	OPTION
155	0311-18260	PW M18	4			OPTION
156	0252-03030	SPLIT COTTER PIN 3X30	2			OPTION

MT-55

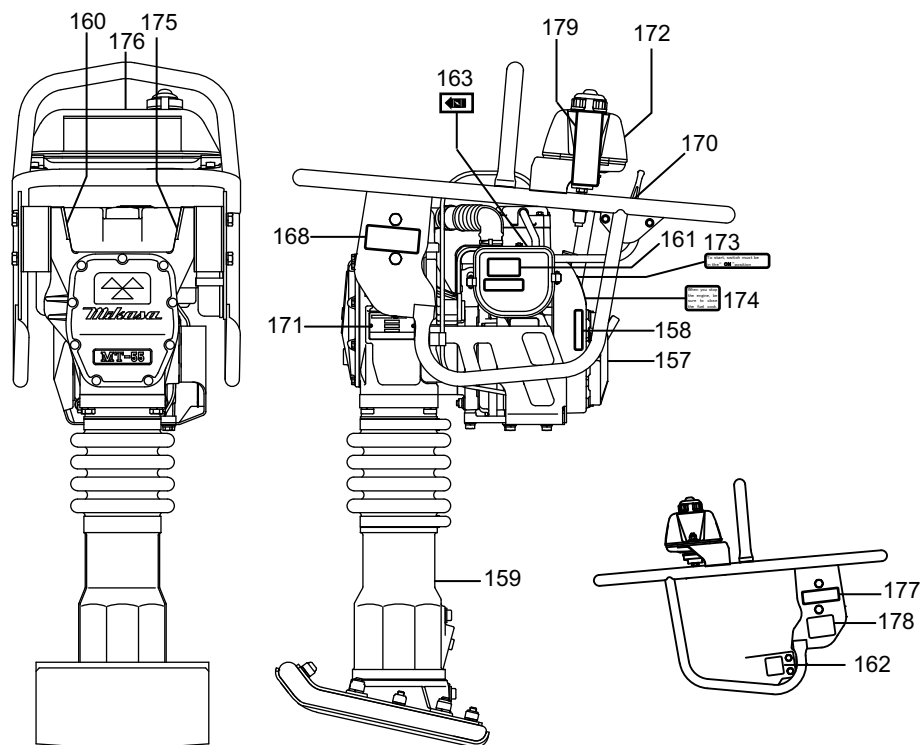
3IT0

NAME PLATES, DECALS / 銘板関係

for JAPAN / 日本向



for EXPORT / 輸出向



NAME PLATES, DECALS

** 3IT

**

REF NO.	PART NO.	PART NAME	Q' TY	MRK	MK2	REMARKS
157	9201-00240	DECAL, (M-MARK)	1			
158	9202-09570	DECAL, E/G R. P. M 3800-4100	1			
159	9202-01950	DECAL, OIL SAE 10W-30	1			
160	9202-09610	DECAL, CLEANING ELEMENT	1			
161	9201-08310	DECAL, CLEANER ELEMENT	1			
162	073-20045-20	LABEL, OIL CAUTION	1			
163	073-20044-30	LABEL (CHOKE)	1			
164	9201-08290	DECAL, CAUTION	1			JAPAN
165	9201-09970	DECA, OIL/FLUID LEVELS	1			JAPAN
166	9201-08660	DECAL, CAUTION (RAMMER)	1			JAPAN
167	9201-09500	TAG, GASOLINE (JAPANESE)	1			JAPAN
168	073-20049-80	LABEL, CAUTION	1			JAPAN
169	9201-09520	DECAL, ENGINE SET R. P. M	1			JAPAN
170	9201-09980	DECAL, LEVER OPERATION	1		!9201-09981	JAPAN
170	9201-09981	DECAL, LEVER OPERATION	1	00		JAPAN
170	9202-11690	DECAL, LEVER OPERATION	1			FOR EXPORT
171	9202-09560	PLATE, SERIAL NO. /MT-55	1			JPN -N1799
171	9202-09930	PLATE, SERIAL NO. /MT-55F	1			MQ
171	9202-10020	PLATE, SERIAL NO. /MT-55FO	1			OKINAWA
171	9202-10590	PLATE, SERIAL NO. /MT-55	1			EXP. L4480-
171	9202-11890	PLATE, SERIAL NO. MT-55AJPN	1			JPN N1800-
171	9202-12630	PLATE, SERIAL NO. /MT-55SS	1			MT-55SS
172	9202-09750	DECAL, CAUTION 4CYCLE /MT	1			EXPORT
173	9202-02930	DECAL, SWITCH-ON	1			EXPORT
174	9202-03990	DECAL, CAUTION (FUEL COCK)	1			EXPORT
175	9202-09630	DECAL, CLEANING ELEMENT	1			EXPORT
176	9202-03290	DECAL, CAUTION	1			EXPORT
177	9202-09100	DECAL, CAUTION (RAMMER)	1			EXPORT
178	9202-07690	DECAL, CAUTION (MANUAL)	1			EXPORT
179	9202-08960	TAG, GASOLINE	1			EXPORT
180	9202-05500	DECAL, IMER	1	DC		IMER
180	9202-10550	DECAL, IMER-MARK / MT	1			IMER
181	9202-10100	DECAL, EC NOISE REQ. LWA108	1	AD		EU K6096-
181	9202-10310	DECAL, EC NOISE REQ. LWA107	1	00		EU 2002.10-
191	9202-10850	DECAL, START-DRIVING/EXP	1			IMER
192	9202-10870	DECAL, COUTION/CONBI PL4	1			IMER
193	9202-10880	DECAL, CAUTION/COMBI	1			IMER
196	9202-10160	DECAL, SERVICE MONTHLY	1			MQ
197	9202-10170	DECAL, GASOLINE ONLY	1			MQ
198	9202-10180	DECAL, CHECK DAILY (FILTER)	1			MQ



MIKASA SANGYO CO.,LTD.

HEAD OFFICE
NO. 4-3. 1-CHOME, SARUGAKU-CHO, CHIYODA-KU
TOKYO, JAPAN