



# SPARE PARTS MANUAL

## FLEXTOOL PROFINISH<sup>®</sup> WALK-BEHIND POWER TROWEL FP436D



Version 2.0 (March 2025)

FOR MORE INFORMATION VISIT [flextool.com.au](https://flextool.com.au)

## HOW TO READ THIS SPARE PARTS MANUAL

The following section explains the different symbols and remarks used in this manual and how to interpret the information outlined in the following pages.

### Section 1 – Diagram and parts list

- Item No : Used to reference the spare part in the diagram to the parts list.
- Product Code : Used to indicate the unique Flextool spare parts product code used when ordering parts.

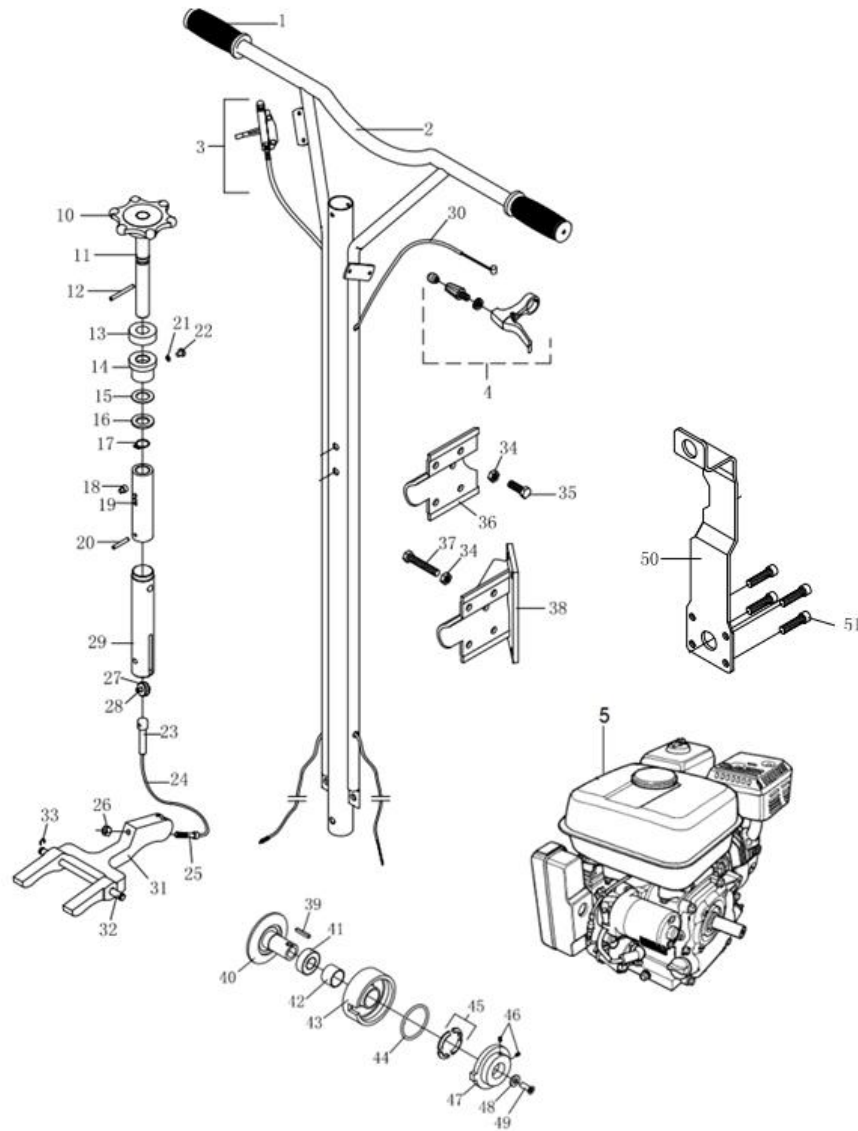
Product code can be presented in the following ways:

- Number : Signifies the unique Flextool spare parts product code used when placing orders.
  - Blank : Used for parts pending formal part number assignment at the time of publication. Also denotes that the spare parts are not sold separately or are unavailable from Flextool.
  - See remarks : Indicates that the spare parts are part of an assembly, service kit or is part of a serial number range where a particular part is used. Please refer to remarks to find further information.
- Description : Used to provide a concise description of the spare part such as size, length, diameter, models, etc.
  - Qty : Indicates the quantity of part(s) required for the equipment. Please verify the required quantity when placing an order.
  - Remarks : Refers to additional information, including assembly kit, service kit and serial number range where particular part is used.
    - AS : Refers to the parts supplied with an assembly kit.
    - SK : Refers to the parts supplied with a service kit.
    - Serial number: Indicates the range of serial number where particular part is used.

### Section 2 – Fast moving spare parts

#### FLEXTOOL PROFINISH WALK-BEHIND POWER TROWEL FP436D

Description	Product Code
FLX THROTTLE LEVER & CABLE 2600 MM	NPSP9942-UNIT
FLX ADJUSTING WIRE AY	NPS36551-UNIT
FLX SAFETY SWITCH AY W/O CABLE	NPS00138-UNIT
FLX V-BELT A27	NPS09324-UNIT
FLX ADJUSTING BOLT	NPSP9065-UNIT



Handle

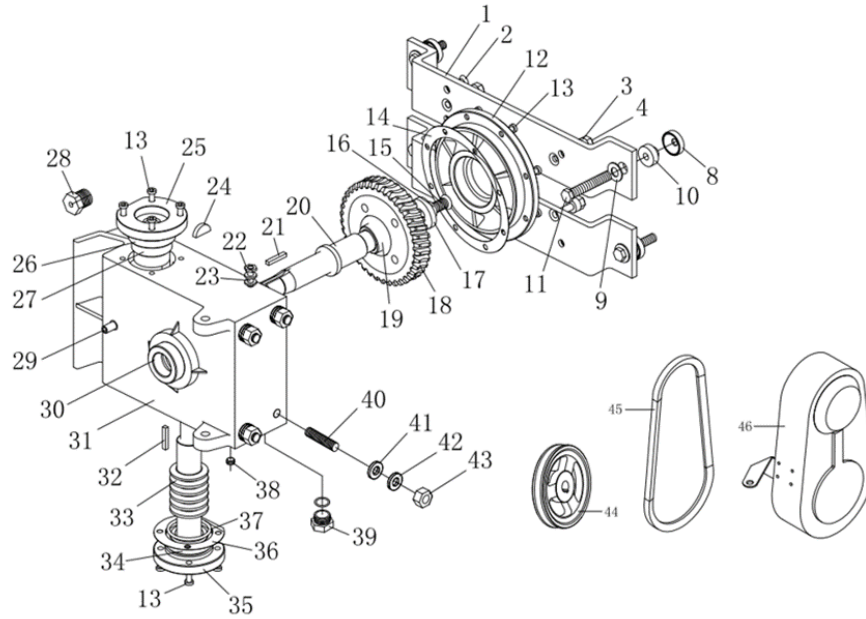
Item No.	Product Code	Description	Qty	Remarks
1	NPS65001-UNIT	FLX LEFT GRIP WITH SCREW HOLE (FT1165001)	1	
1A	NPS65002-UNIT	FLX RIGHT GRIP WITHOUT SCREW HOLE (FT1165002)	1	
2	NPS65100-UNIT	FLX HANDLE (FTP4365100)	1	
3	NPSP9942-UNIT	FLX THROTTLE LEVER & CABLE AY FLEX WIRE (FTP9942)	1	
	NPS65931-UNIT	FLX THROTTLE LEVER & CABLE AY SOLID WIRE (FTP4365400)	1	
4	NPS00138-UNIT	FLX SAFETY SWITCH AY W/O CABLE (FPS124100013)	1	
5	NPS01710-UNIT	YAN ENGINE L48N5 RECOIL START (F01710)	1	
10	NPS65917-UNIT	FLX TILT CONTRL KNOB (FTP4365501)	1	
11	NPS01122-UNIT	FLX ADJUST SHAFT (FTP4365503)	1	
12	NPSP9024-UNIT	FLX SPRING PIN FTP9024 (FTP9024)	1	
13	NPS08051-UNIT	FLX BEARING PITCH CONTROL (FTP9025)	1	
14	NPS01090-UNIT	FLX BUSHING (FTP4365502)	1	
15	NPS01538-UNIT	FLX WASHER (FTP9033)	1	
16	NPS01111-UNIT	FLX SPACER (FTP4365504)	1	
17	NPS00388-UNIT	FLX RING (FTP9027)	1	
18	NPSP9028-UNIT	FLX BOLT (FTP9028)	1	
19	NPS01345-UNIT	FLX ADJUST SHAFT BUSHING (FTP4365505)	1	
20	NPSP9030-UNIT	FLX PIN (FTP9030)	1	
23	See Remarks	FLX CABLE CONNECTOR (FTP4365506)	1	Use AS-2
24	See Remarks	FLX STEEL WIRE CABLE (FTP9016)	1	Use AS-2
25	See Remarks	FLX CABLE CONNECTOR SCREW (FTP4365508)	1	Use AS-2

## Handle - Continued

Item No.	Product Code	Description	Qty	Remarks
27	NPS00690-UNIT	FLX CABLE WHEEL (FTP4365508)	1	
28	NPS00688-UNIT	FLX PIN (FTP9031)	1	
29	NPS01178-UNIT	FLX WHEEL BUSHING (FTP4365511)	1	
30	NPS00137-UNIT	FLX SAFETY SWITCH CABLE (FPS124100012)	1	
31	NPS65894-UNIT	FLX YOKE ARM FP436&FP440 (FTP4365510)	1	
32	NPS65900-UNIT	FLX SHAFT YOKE ARM (FTP4365509)	1	
33	NPSP9034-UNIT	FLX RETAINER RING FTP9034 (FTP9034)	1	
34	See Remarks	FLX NUT (FTP9016)	1	Use AS-3
35	See Remarks	FLX SCREW (FTP9017)	1	Use AS-3
36	See Remarks	FLX UPPER JOINT PLATE (FTP4365301)	1	Use AS-3
37	See Remarks	FLX SCREW (FTP9018)	1	Use AS-3
38	See Remarks	FLX LOWER JOINT PLATE (FTP4365302)	1	Use AS-3
39	See Remarks	FLX KEY (FTP9076)	1	Use AS-4
40	See Remarks	FLX SPINDLE (FTP4363001)	1	Use AS-4
41	NPSP9075-UNIT	FLX BEARING CLUTCH (FTP9075)	1	
42	NPS08050-UNIT	FLX BUSH CLUTCH (FTP4363006)	1	
43	See Remarks	FLX DRUM (FTP4363002)	1	Use AS-4
44	NPSP9077-UNIT	FLX SPRING (FTP9077)	1	
45	NPS36304-UNIT	FLX FLYWEIGHT (SET OF 4) (FTP4363004)	1	
46	NPS01467-UNIT	FLX SCREW (FTP9078)	1	Use AS-4
47	NPS63003-UNIT	FLX CLUTCH COVER (FTP4363003)	1	
48	NPS08839-UNIT	FLX RETAINER CLUTCH (F08839)	1	
49	NPS06721-UNIT	FLX S.CAP SCREW 0.312"UNF X 1" (F06721)	1	
50	NPS06350-UNIT	FLX SCREW SKT HD CSK 5/16X3/4 GRD 10 (F06350)	4	
51	NPS02891-UNIT	FLX LIFTING HOOK (F02891)	1	

## Handle (FP436D) - Assembly / Service Kits

Item No.	Product Code	Description	Qty	Remarks
AS-1	NPS00097-UNIT	FLX HANDLE AY (FTP4365000)	1	Inc Items: 1, 1A & 2
AS-2	NPS36551-UNIT	FLX ADJUSTING WIRE AY (FTP4365512)	1	Inc Items: 23-25
AS-3	NPS36530-UNIT	FLX HANDLE SUPPORT PLATE AY (FTP4365300)	1	Inc Items: 34-38
AS-4	NPS36300-UNIT	FLX CLUTCH AY POWER TROWEL (FTP4363000)	1	Inc Items: 39-49



**Gearbox**

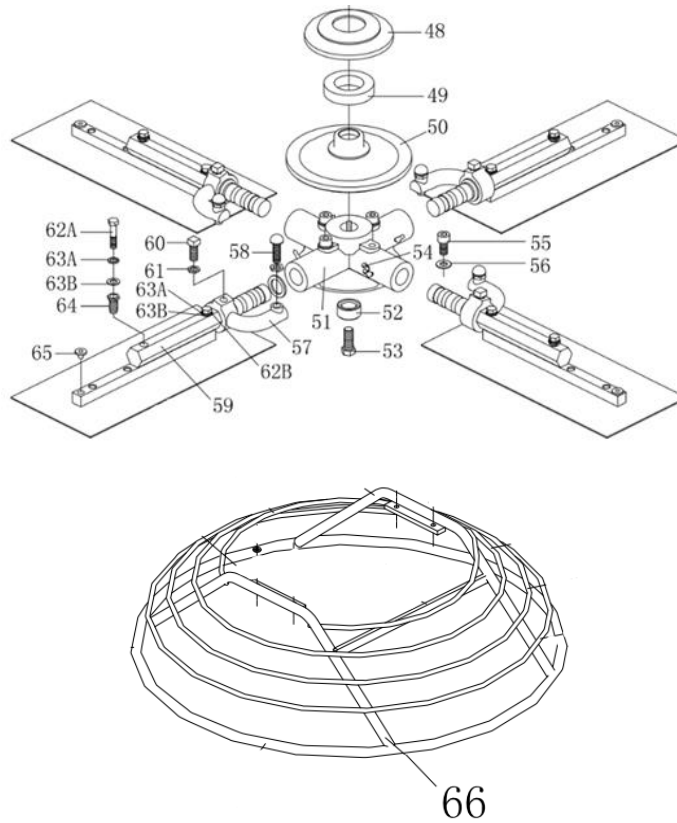
Item No.	Product Code	Description	Qty	Remarks
1	NPS66136-UNIT	FLX MOUNTING PLATE (FTP4364001)	2	
2	NPSP9042-UNIT	FLX SCREW M8 x 20 (FTP9042)	6	
3	NPS36404-UNIT	FLX WASH (FTP4364004)	4	
4	NPSP9041-UNIT	FLX BOLT (FTP9041)	4	
5	NPSP9036-UNIT	FLX NUT FP436 (FTP9036)	4	
6	NPSP9037-UNIT	FLX WASH FP436 (FTP9037)	4	
7	NPSP9038-UNIT	FLX WASH (FTP9038)	4	
8	NPS64002-UNIT	FLX STEEL BOWL (FTP4364002)	4	
9	NPSP9039-UNIT	FLX PLATE WASHER (FTP9039)	4	
10	NPS64009-UNIT	FLX RUBBER WASHER (FTP4364009)	4	
11	NPSP9040-UNIT	FLX BOLT (FTP9040)	4	
12	NPS64005-UNIT	FLX COVER GEAR BOX (FTP4364005)	1	
13	NPSP9043-UNIT	FLX SCREW (FTP9043)	16	
14	NPS66075-UNIT	FLX WASH (FTP4364008)	1	
15	NPS64007-UNIT	FLX WORM BOLT (FTP4364007)	1	
16	NPS64006-UNIT	FLX PRESS WASHER (FTP4364006)	1	
17	NPSP9048-UNIT	FLX BEARING (FTP9048)	1	
18	NPS66051-UNIT	FLX WORM GEAR (FTP4364010)	1	
19	NPSP9048-UNIT	FLX BEARING (FTP9048)	1	
20	NPS64011-UNIT	FLX GEAR SHAFT (FTP4364011)	1	
21	NPSP9051-UNIT	FLX KEY (FTP9051)	1	
22	NPSP9059-UNIT	FLX NUT (FTP9059)	1	
23	NPS01468-UNIT	FLX BOLT (FTP9060)	1	
24	NPSP9052-UNIT	FLX KEY (FTP9052)	1	
25	NPS64012-UNIT	FLX LEFT BEARING FLANGE (FTP4364012)	1	
26	NPSP9055-UNIT	FLX SEALER (FTP9055)	1	
27	NPSP9057-UNIT	FLX BEARING (FTP9057)	1	
28	NPS64100-UNIT	FLX RELEASE VALVE (FTP4364100)	1	
29	NPSP9062-UNIT	FLX SCREW (FTP9062)	2	
30	NPSP9050-UNIT	FLX SEALER (FTP9050)	1	
31	NPS36303-UNIT	FLX GEAR BOX SHELL (FTP4364003)	1	
32	NPSP9054-UNIT	FLX KEY (FTP9054)	1	
33	NPS36413-UNIT	FLX WORM SHAFT (FTP4364013)	1	
34	NPSP9063-UNIT	FLX BEARING (FTP9063)	1	
35	NPS64014-UNIT	FLX RIGHT BEARING CASE (FTP4364014)	1	
36	NPS66006-UNIT	FLX WASHER (FTP4364015)	2	
37	NPSP9056-UNIT	FLX O-RING (FTP9056)	1	

## Gearbox - Continued

Item No.	Product Code	Description	Qty	Remarks
38	NPSP9053-UNIT	FLX PLUG (FTP9053)	1	
39	NPSP9064-UNIT	FLX POWER TROWEL SIGHT GLASS 46" (FTP9064)	1	
40	NPSP9044-UNIT	FLX BOLT (FTP9044)	4	
41	NPS01461-UNIT	FLX WASHER (FTP9047)	5	
42	NPSP9046-UNIT	FLX SPRING WASHER (FTP9046)	5	
43	NPS02299-UNIT	FLX NUT (FTP9045)	5	
44	NPS62001-UNIT	FLX PULLEY (FTP4362001)	1	
45	NPS09324-UNIT	FLX V-BELT A27 (F09324)	1	
46	NPS36210-UNIT	FLX BELT GUARD ASSY (FTP4362100)	1	

## Gearbox - Assembly / Service Kits

Item No.	Product Code	Description	Qty	Remarks
AS-1	NPS66136-UNIT	FLX MOUNTING PLATE ASSY (FTP4364001)	1	Inc Items: 1-11
AS-2	NPS64000-UNIT	FLX GEARBOX ASSY (FTP4364000)	1	Inc Items: 12-43



Spider Plate

Item No.	Product Code	Description	Qty	Remarks
48	NPS66002-UNIT	FLX PRESSURE PLATE COVER (FTP4366002)	1	
49	NPSP9070-UNIT	FLX BEARING (FTP9070)	1	
50	NPS36603-UNIT	FLX PRESSURE PLATE (FTP4366003A)	1	
51	NPS36605-UNIT	FLX SPIDER PLATE (FTP4366005)	1	
52	NPS36604-UNIT	FLX RETAINING WASHER FTP4366004 (FTP4366004)	1	
53	NPSP9068-UNIT	FLX SC/HD CAP SCREW M10x27MM BLK (FTP9068)	1	
54	NPSP9069-UNIT	FLX GREASE NIPPLE 1/4 BSP 45D (FTP9069)	4	
55	NPSP9066-UNIT	FLX BOLT (FTP9066)	4	
56	NPSP9046-UNIT	FLX SPRING WASHER (FTP9046)	4	
57	NPS36606-UNIT	FLX LIFT LEVER (FTP4366006)	4	
58	NPSP9067-UNIT	FLX SCREW (FTP9067)	4	
59	NPS36601-UNIT	FLX TROWEL ARM (FTP4366001)	4	
60	NPSP9065-UNIT	FLX ADJUSTING BOLT (FTP9065)	4	
61	NPSP9059-UNIT	FLX NUT (FTP9059)	8	
62A	NPSP9131-UNIT	FLX BOLT TROWEL ARM 5/16 x 2.00" (FTP9131)	4	
62B	NPSP9071-UNIT	FLX BOLT TROWEL ARM 5/16 x 1.25" (FTP9071)	4	
63A	NPSP9037-UNIT	FLX SPRING WASHER (FTP9037)	8	
63B	NPSP9038-UNIT	FLX PLAIN WASHER (FTP9038)	8	
64	NPS36607-UNIT	FLX SCREW ADJUSTER (FTP4366007)	4	
65	See Remarks	FLX PLUG PLASTIC (FTP4366911)	4	Included with blades
66	NPS36700-UNIT	FLX SAFETY RING AY (FTP4367000)	1	

Spider Plate - Assembly / Service Kits

Item No.	Product Code	Description	Qty	Remarks
AS-1	NPS3660A-UNIT	FLX SPIDER PLATE AY (FTP4366000A)	1	Inc Items 48-65



## Flextool

1956 Dandenong Road, Clayton VIC 3168, Australia

Phone (AUS): 1300 353 986

[flextool.com.au](http://flextool.com.au)

ABN 80 069 961 968

This manual summarises our best knowledge of the product based on the information available at the time of publication. You should read this manual carefully and consider the information in the context of how the product will be used. Our responsibility for products sold is subject to our standard terms and conditions of sale.

### DISCLAIMER:

Any advice, recommendation, information, assistance or service provided by us in this manual is given in good faith and is believed by us to be appropriate and reliable. However, any advice, recommendation, information, assistance or service provided by us is provided without liability or responsibility PROVIDED THAT the foregoing shall not exclude, limit, restrict or modify the right entitlements and remedies conferred upon any person or the liabilities imposed upon us by any condition or warranty implied by Commonwealth, State or Territory Act or ordinance void or prohibiting such exclusion limitation or modification. The product can be expected to perform as indicated in this manual so long as operation and operational procedures of the individual products are followed as recommended in this manual.

Design and technical specifications may be subject to changes.

© This publication is copyright. All rights are reserved. Flextool and Profinish are registered trade marks of Parchem Construction Supplies Pty Ltd.